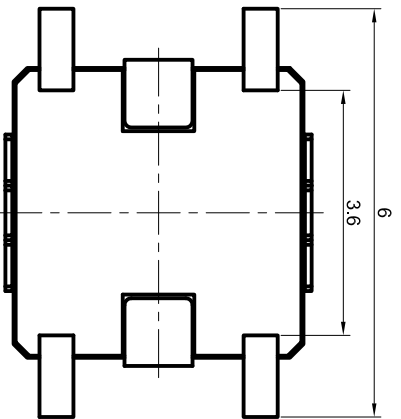
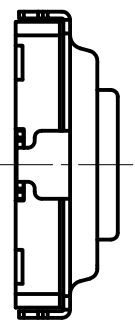
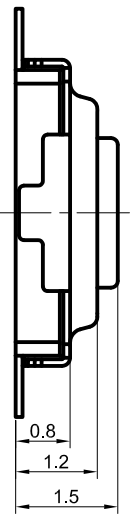
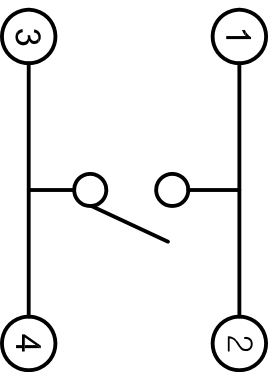


SMD REFLOW PATTERN  
(TOLERANCE : ±0.05)



CIRCUIT DIAGRAM



SPECIFICATION

1. RATING : DC 15V / 20mA
2. CONTACT RESISTANCE : MAX. 100mOhm
3. TRAVEL : 0.2 mm ±0.1mm
4. OPERATING FORCE : 160 / 250gf ±50gf
5. OPERATING LIFE : 100000 CYCLES
6. NON SPECIFIED DIMENSIONS TOLERANCE : ±0.2

GENERAL TORANCE (UNLESS SPECIFIED)		SCALE	UNIT	TITLE
±0.2		9 / 1	METRIC	1147
DRAWN BY		THIRD ANGLE PROJECTION	SIZE	DOCUMENT NUMBER
CHECKED BY			A4	
APPROVED BY		SUNGSAN ENTERPRISE, LTD.		
REV	DESCRIPTION	THIS DRAWING CONTAINS INFORMATION THAT IS PROPRIET TO CREATIVE ELECTRONICS CO.,LTD. AND SHOULD NOT BE USED WITHOUT WRITTEN PERMISSION.		