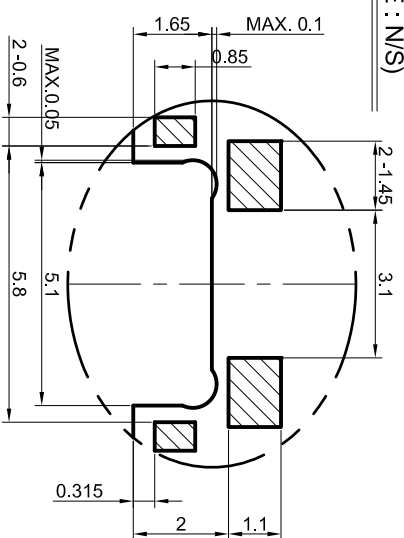
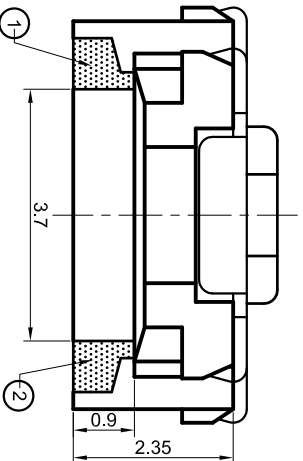
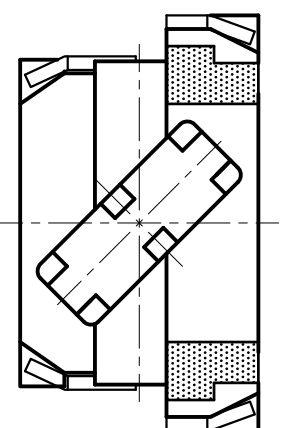
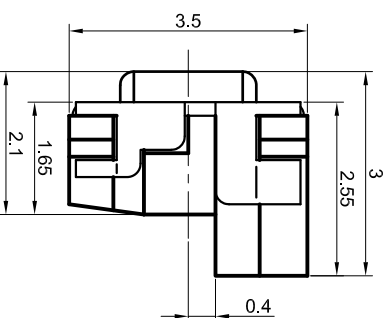
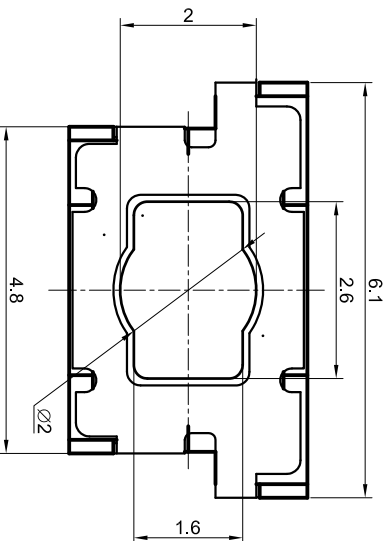
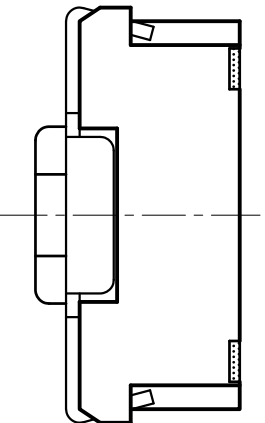


**SMD REFLOW PATTERN
(TOLERANCE : N/S)**



CIRCUIT DIAGRAM



SPECIFICATION

1. RATING : DC 15V / 20mA
2. CONTACT RESISTANCE : MAX. 100mOhm
3. TRAVEL : 0.15 mm ±0.1mm
4. OPERATING FORCE : 120gf ±50gf
5. OPERATING LIFE : 100000 CYCLES
6. NON SPECIFIED DIMENSIONS TOLERANCE : ±0.2

		GENERAL TOLERANCE (UNLESS SPECIFIED)		SCALE		UNIT		TITLE	
		±0.2		9 / 1		METRIC		1134	
				THIRD ANGLE PROJECTION		SIZE		DOCUMENT NUMBER	
				A4					
REV		DESCRIPTION		DRAWN BY		CHECKED BY		APPROVED BY	
<p>THIS DRAWING CONTAINS INFORMATION THAT IS PROPRIET TO CREATIVE ELECTRONICS CO.,LTD. AND SHOULD NOT BE USED WITHOUT WRITTEN PERMISSION.</p>									
<p>SUNGSAN ENTERPRISE, LTD.</p>									