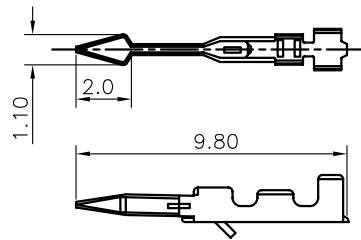


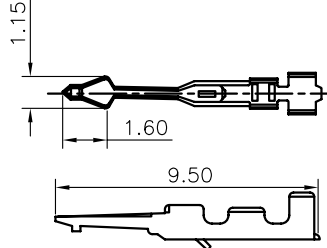
Female Terminal A TYPE



Female Terminal

Wire Range		O.D of Wire
Section Area (mm <sup>2</sup> )	AWG#	mm
0.08~0.33	28~22	0.9~1.7

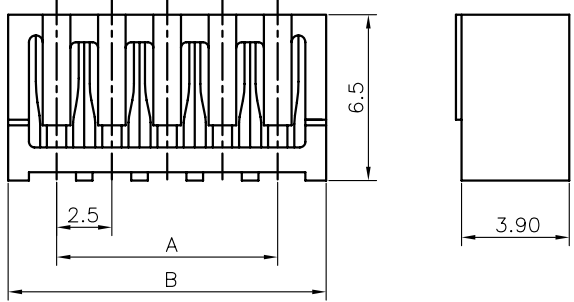
Female Terminal B TYPE



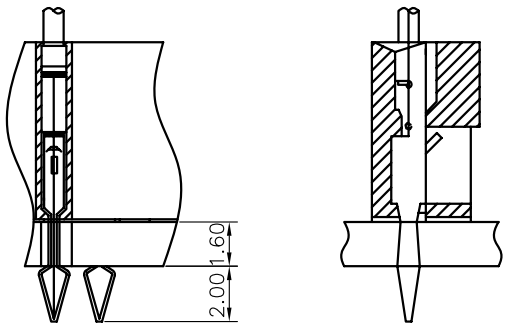
Female HOUSING

Position	DIMENSION	
	A	B
2	2.5	6.5
3	5.0	9.0
4	7.5	11.5
5	10.0	14.0
6	12.5	16.5
7	15.0	19.0
8	17.5	21.5
9	20.0	24.0
10	22.5	26.5
11	25.0	29.0
12	27.5	31.5
13	30.0	34.0
14	32.5	36.5
15	35.0	39.0
16	37.5	41.5

Female Housing



Mounting meurement

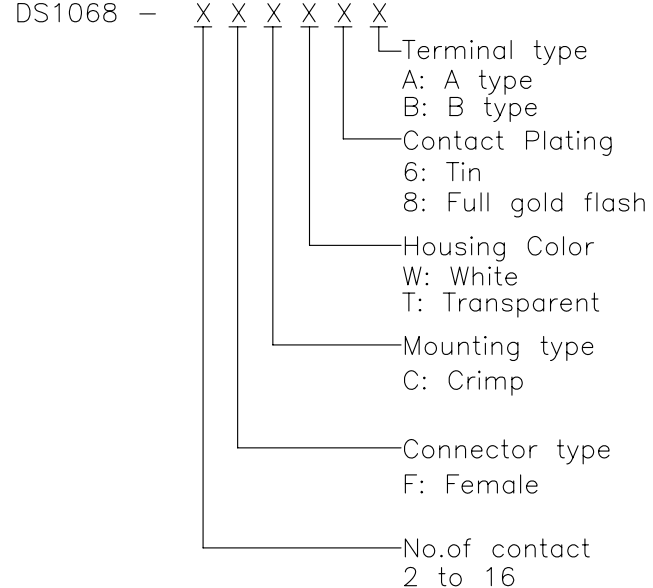


REV.	DESCRIPTION	DRAWN	CHECKED	APPROVED
A	NEW RELEASE	LJH 06/28/05'		

NOTES:

- MAIN SPECIFICATIONS
  - Housing material: NYLON 66
  - Wire range: AWG#28~#22
  - Rated voltage: 250V
  - Rated current: 1A
  - Contact resistance: ≤ 30mΩ
  - Insulation resistance: ≥ 1000MΩ
  - Withstanding voltage: 500V,AC 1 minute
  - Temperature range: -25 ~ +85°C
  - Recommend PC board thickness:1.6mm

2. PRODUCT NUMBER CODE:



GENERAL TOLERANCE		ANGLE TOLERANCE	
X.	±0.60	X.	±5°
.X	±0.38	.X	±3°
.XX	±0.25	.XX	±2°

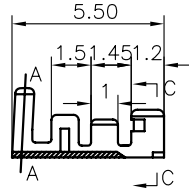
PROJECTION		TITLE	P.C.B CONNECTOR 2.5mm SCN TYPE	
UNITS	mm	SHEET	DS1068 SERIES	
SHEET SIZE	A4	SHEET	DS1068 SERIES	

DRAWING TYPE	CUSTOMER		
SCALE	1:1	SHEET	1 OF 1
DRAWING NO.	C-DS1068-XXXXXX		

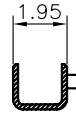
晨翔电子有限公司  
**CONNFLY CONNFLY ELECTRONIC CO. LTD**

REV.	DESCRIPTION	DRAWN	CHECKED	APPROVED
A	NEW RELEASE	LL 07/05/06'		

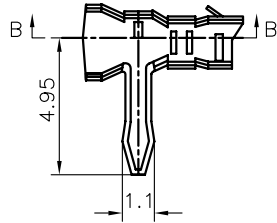
Contact



SECTION B-B



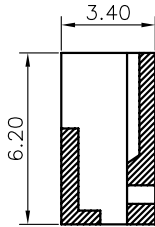
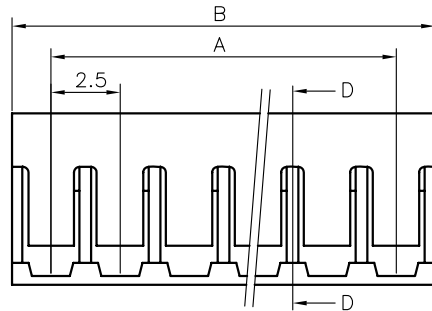
SECTION C-C



Housing



SECTION A-A



SECTION D-D

Female HOUSING

Position	DIMENSION	
	A	B
2	2.5	5.0
3	5.0	7.5
4	7.5	10.0
5	10.0	12.5
6	12.5	15.0
7	15.0	17.5
8	17.5	20.0
9	20.0	22.5
10	22.5	25.0
11	25.0	27.5
12	27.5	30.0
13	30.0	32.5
14	32.5	35.0
15	35.0	37.5
16	37.5	40.0

NOTES:

1. MAIN SPECIFICATIONS

- . Housing material: NYLON 66
- . Wire range: AWG#28~#22
- . Rated voltage: 250V
- . Rated current: 2A
- . Contact resistance:  $\leq 0.01\Omega$
- . Insulation resistance:  $\geq 1000M\Omega$
- . Withstanding voltage: 500V,AC 1 minute
- . Temperature range:  $-25 \sim +85^{\circ}C$
- . Recommend PC board thickness: 1.2~1.6mm

2. PRODUCT NUMBER CODE:


DS1068-01 - X X X X X

- Contact Plating  
6: Tin  
8: Full gold flash
- Housing Color  
W: White  
T: Transparent
- Mounting type  
C: Crimp
- Connector type  
F: Female
- No.of contact  
2 to 16

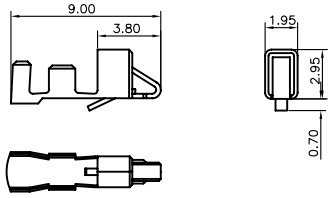
GENERAL TOLERANCE		ANGLE TOLERANCE	
X.	$\pm 0.60$	X.	$\pm 5^{\circ}$
.X	$\pm 0.38$	.X	$\pm 3^{\circ}$
.XX	$\pm 0.25$	.XX	$\pm 2^{\circ}$

PROJECTION	TITLE
UNITS	P.C.B CONNECTOR 2.5mm SCNW TYPE
SHEET SIZE	SERIES DS1068-01 SERIES

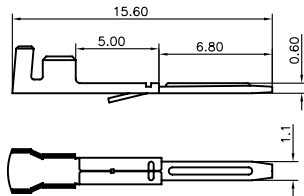
DRAWING TYPE	CUSTOMER		
SCALE	1:1	SHEET	1 OF 1
DRAWING NO.	C-DS1068-01-XXXXX		

 晨翔电子有限公司  
CONNFly CONNFly ELECTRONIC CO. LTD

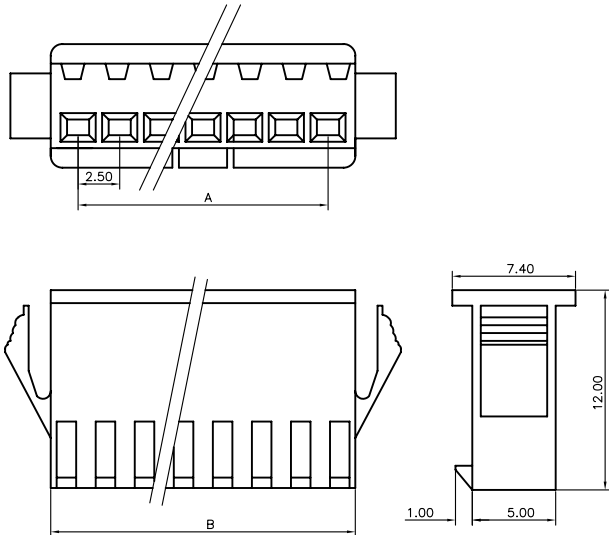
Female Terminal



Male Terminal



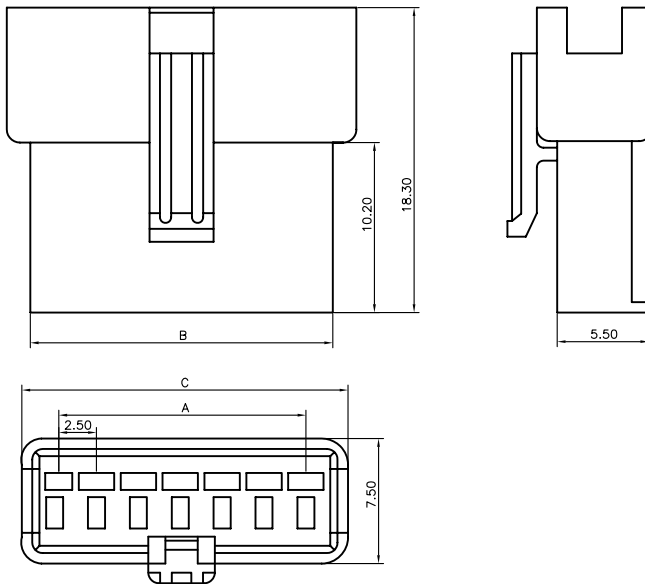
Female Housing



Female HOUSING

Position	DIMENSION		
	A	B	C
2	2.5	5.4	7.7
3	5.0	7.9	10.2
4	7.5	10.4	12.7
5	10.0	12.9	15.2
6	12.5	15.4	17.7
7	15.0	17.9	20.2
8	17.5	20.4	22.7
9	20.0	22.9	25.2
10	22.5	25.4	27.7
11	25.0	27.9	30.2
12	27.5	30.4	32.7

Male Housing



REV.	DESCRIPTION	DRAWN	CHECKED	APPROVED
A	NEW RELEASE	LL 07/05/06'		

NOTES:

1. SPECIFICATIONS

- . Housing material: NYLON 66
- . Wire range: AWG#28~#22
- . Rated voltage: 250V
- . Rated current: 3A
- . Contact resistance:  $\leq 0.01\Omega$
- . Insulation resistance:  $\geq 1000M\Omega$
- . Withstanding voltage: 500V,AC 1 minute
- . Temperature range:  $-25 \sim +85^{\circ}C$
- . Recommend PC board thickness:1.6mm

2. PRODUCT NUMBER CODE:


DS1068-02 - X X X X X

- X X X X X
- Contact Plating  
6: Tin  
8: Full gold flash
- Housing Color  
W: White  
T: Transparent  
B: Black
- Mounting type  
C: Crimp
- Connector type  
F: Female  
M: Male
- No.of contact  
2 to 12

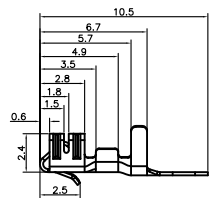
GENERAL TOLERANCE		ANGLE TOLERANCE	
X.	$\pm 0.60$	X.	$\pm 5^{\circ}$
.X	$\pm 0.38$	.X	$\pm 3^{\circ}$
.XX	$\pm 0.25$	.XX	$\pm 2^{\circ}$

PROJECTION	TITLE
UNITS	P.C.B CONNECTOR 2.5mm SM TYPE
SHEET SIZE	SERIES DS1068-02 SERIES

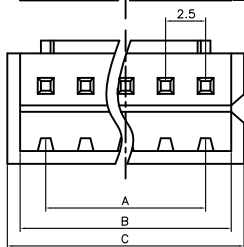
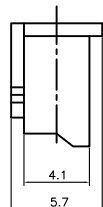
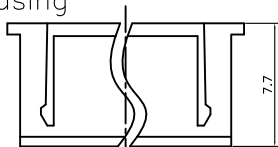
DRAWING TYPE	CUSTOMER		
SCALE	1:1	SHEET	1 OF 1
DRAWING NO.	C-DS1068-02-XXXXX		

 晨翔电子有限公司  
**CONNFLY CONNFLY ELECTRONIC CO. LTD**

Female TERMINAL



Female Housing



Female Terminal

Wire Range		O.D of Wire
Section Area (mm <sup>2</sup> )	AWG#	mm
0.08~0.33	28~22	1.2~1.9

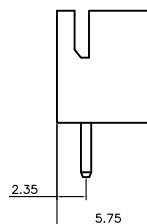
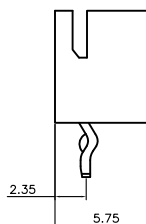
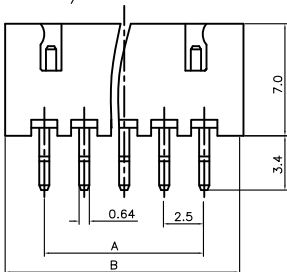
Female HOUSING

Position	DIMENSION		
	A	B	C
2	2.5	5.7	7.3
3	5.0	8.2	9.8
4	7.5	10.7	12.3
5	10.0	13.2	14.8
6	12.5	15.7	17.3
7	15.0	18.2	19.8
8	17.5	20.7	22.3
9	20.0	23.2	24.8
10	22.5	25.7	27.3
11	25.0	28.2	29.8
12	27.5	30.7	32.3
13	30.0	33.2	34.8
14	32.5	35.7	37.3
15	35.0	38.2	39.8
16	37.5	40.7	42.3
17	40.0	43.2	44.8
18	42.5	45.7	47.3
19	45.0	48.2	49.8
20	47.5	50.7	52.3

Male

Position	DIMENSION	
	A	B
2	2.5	7.4
3	5.0	9.9
4	7.5	12.4
5	10.0	14.9
6	12.5	17.4
7	15.0	19.9
8	17.5	22.4
9	20.0	24.9
10	22.5	27.4
11	25.0	29.9
12	27.5	32.4
13	30.0	34.9
14	32.5	37.4
15	35.0	39.9
16	37.5	42.4
17	40.0	44.9
18	42.5	47.4
19	45.0	49.9
20	47.5	52.4

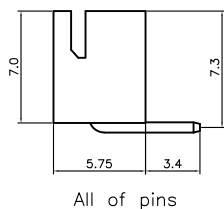
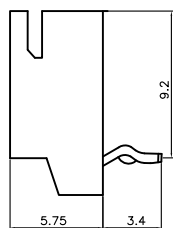
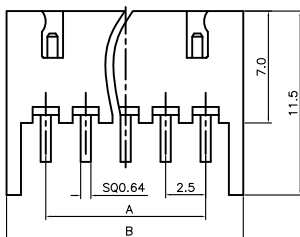
Male V/T TYPE



Male Right Angle

W/ kink

W/O kink



2-7(include) pins

Type A

Type B

All of pins

NOTES:

1. MAIN SPECIFICATIONS

- . Housing material: NYLON 66
- . Wire range: AWG#28~#22
- . Rated voltage: 250V
- . Rated current: 1A
- . Contact resistance: ≤ 30mΩ
- . Insulation resistance: ≥ 1000MΩ
- . Withstanding voltage: 500V,AC 1 minute
- . Temperature range: -25 ~ +85°C
- . Recommend PC board thickness:1.6mm

2. PRODUCT NUMBER CODE:

DS1069 - X X X X X X X

- Bend Type (R/A only)
  - A: Type A
  - B: Type B
- Contact Type
  - X: W/O kink
  - S: W/ kink
- Contact Plating
  - 6: Tin
  - 8: Full gold flash
- Housing Color
  - W: White
  - T: Transparent
- Mounting type
  - C: Crimp
  - V: V/T
  - R: Right Angle
- Connector type
  - M: Male
  - F: Female
- No.of contact
  - 2 to 20

GENERAL TOLERANCE		ANGLE TOLERANCE	
X.	±0.60	X.	±5°
.X	±0.38	.X	±3°
.XX	±0.25	.XX	±2°

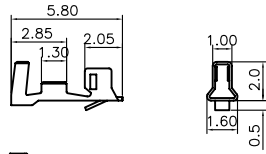
PROJECTION	TITLE
UNITS: mm	P.C.B CONNECTOR 2.5mm XH TYPE
SHEET SIZE: A4	SERIES: DS1069 SERIES

DRAWING TYPE	CUSTOMER
SCALE: 1:1	SHEET: 1 OF 1
DRAWING NO.:	C-DS1069-XXXXX-B

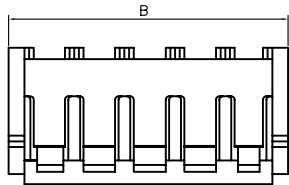
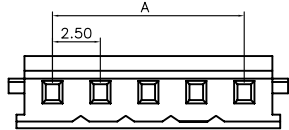
**晨翔电子有限公司**  
**CONNFLY CONNFLY ELECTRONIC CO. LTD**

REV.	DESCRIPTION	DRAWN	CHECKED	APPROVED
A	NEW RELEASE	LL 07/06/06'		

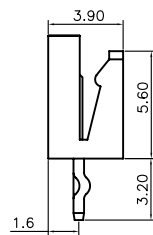
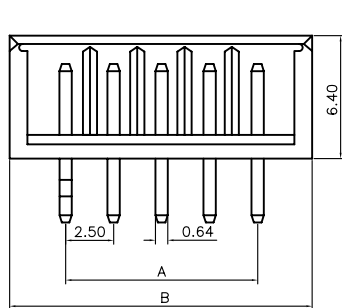
Female TERMINAL



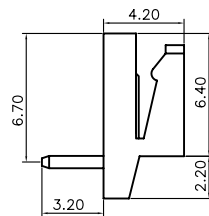
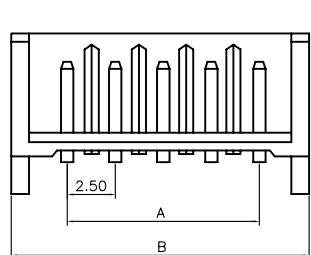
Female Housing



Male V/T TYPE



Male R/A TYPE



Female HOUSING

Position	DIMENSION	
	A	B
2	2.5	6.9
3	5.0	9.4
4	7.5	11.9
5	10.0	14.4
6	12.5	16.9
7	15.0	19.4
8	17.5	21.9
9	20.0	24.4
10	22.5	26.9
11	25.0	29.4
12	27.5	31.9
13	30.0	34.4
14	32.5	36.9
15	35.0	39.4
16	37.5	41.9
17	40.0	44.4
18	42.5	46.9
19	45.0	49.4
20	47.5	52.9

Male

Position	DIMENSION	
	A	B
2	2.5	5.0
3	5.0	7.5
4	7.5	10.0
5	10.0	12.5
6	12.5	15.0
7	15.0	17.5
8	17.5	20.0
9	20.0	22.5
10	22.5	25.0
11	25.0	27.5
12	27.5	30.0
13	30.0	32.5
14	32.5	35.0
15	35.0	37.5
16	37.5	40.0
17	40.0	42.5
18	42.5	45.0
19	45.0	47.5
20	47.5	50.0

NOTES:

1. MAIN SPECIFICATIONS

- . Housing material: NYLON 66
- . Wire range: AWG#30~#22
- . Rated voltage: 250V
- . Rated current: 3A
- . Contact resistance:  $\leq 0.01\Omega$
- . Insulation resistance:  $\geq 1000M\Omega$
- . Withstanding voltage: 500V,AC 1 minute
- . Temperature range:  $-25 \sim +85^{\circ}C$
- . Recommend PC board thickness:1.6mm

2. PRODUCT NUMBER CODE:

DS1069-01 - X X X X X

- Contact Plating  
6: Tin  
8: Full gold flash
- Housing Color  
W: White  
T: Transparent
- Mounting type  
C: Crimp  
V: V/T  
R: Right Angle
- Connector type  
M: Male  
F: Female
- No.of contact  
2 to 20

GENERAL TOLERANCE		ANGLE TOLERANCE	
X.	$\pm 0.60$	X.	$\pm 5^{\circ}$
.X	$\pm 0.38$	.X	$\pm 3^{\circ}$
.XX	$\pm 0.25$	.XX	$\pm 2^{\circ}$

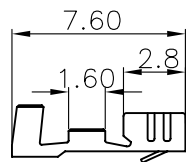
DRAWING TYPE	CUSTOMER		
SCALE	1:1	SHEET	1 OF 1
DRAWING NO.	C-DS1069-01-XXXXX		

PROJECTION		TITLE	P.C.B CONNECTOR 2.5mm EH TYPE	
UNITS	mm	SHEET	A4	SERIES
SHEET SIZE	A4	SERIES	DS1069-01	SERIES

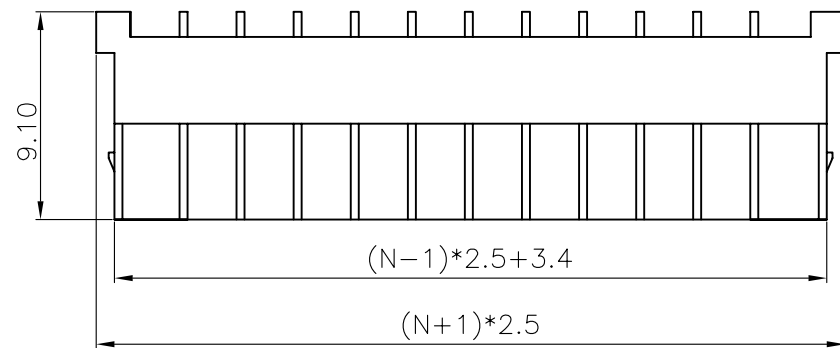
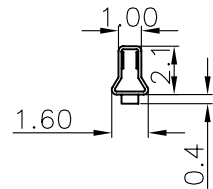
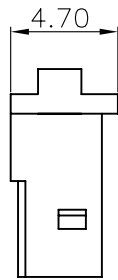
晨翔电子有限公司  
CONNFLY CONNFLY ELECTRONIC CO. LTD

REV.	DESCRIPTION	DRAWN	CHECKED	APPROVED
A	NEW RELEASE	LL 07/22/06'		

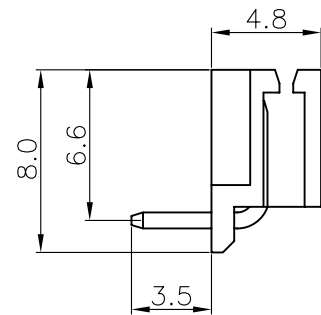
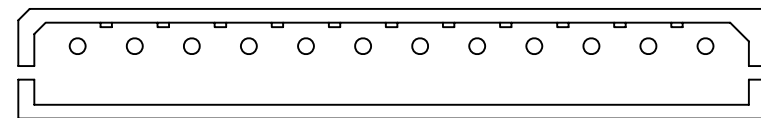
Female Terminal



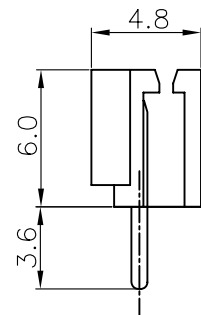
Female Housing



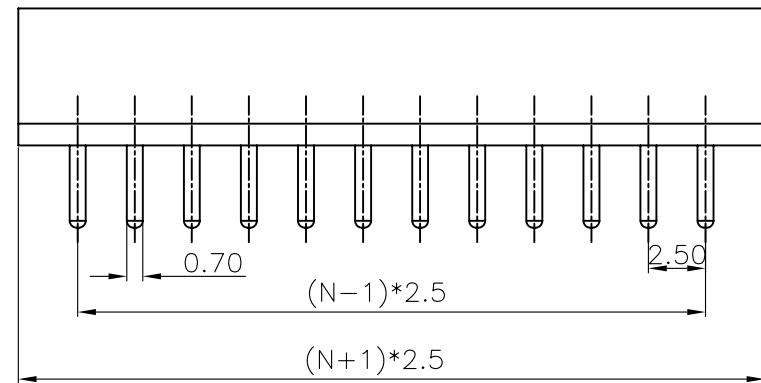
Male V/T type



Male R/A type



Male V/T type



NOTES:

1. SPECIFICATIONS

- . Housing material: NYLON 66
- . Wire range: AWG#30~#22
- . Rated voltage: 250V
- . Rated current: 1A
- . Contact resistance:  $\leq 0.01\Omega$
- . Insulation resistance:  $\geq 1000M\Omega$
- . Withstanding voltage: 500V,AC 1 minute
- . Temperature range:  $-25 \sim +85^{\circ}C$
- . Recommend PC board thickness:1.6mm

2. PRODUCT NUMBER CODE:

DS1069-03 - X X X X X

- Contact Plating  
6: Tin  
8: Full gold flash
- Housing Color  
W: White  
T: Transparent
- Mounting type  
C: Crimp  
V: V/T  
R: R/A
- Connector type  
M: Male  
F: Female
- No.of contact  
2 to 20

GENERAL TOLERANCE		ANGLE TOLERANCE		PROJECTION		TITLE	P.C.B CONNECTOR 2.5mm ZH TYPE	
X.	±0.60	X.	±5°	UNITS	mm	SHEET SIZE	A4	SERIES DS1069-03 SERIES
.X	±0.38	.X	±3°	<b>晨翔电子有限公司</b> <b>CONNFLY CONNFLY ELECTRONIC CO. LTD</b>				
.XX	±0.25	.XX	±2°					
DRAWING TYPE		CUSTOMER						
SCALE		1:1	SHEET	1 OF 1				
DRAWING NO.		C-DS1069-03-XXXXX						