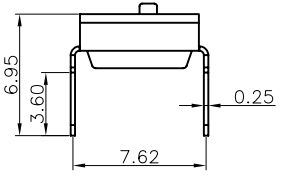
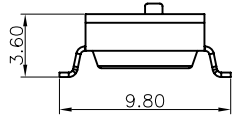
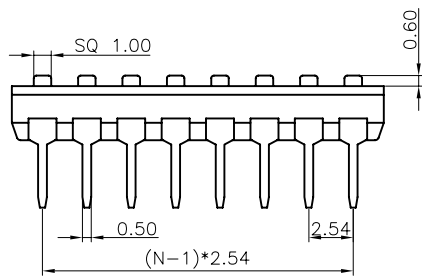
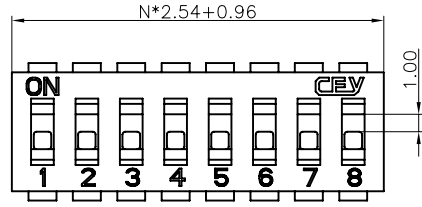


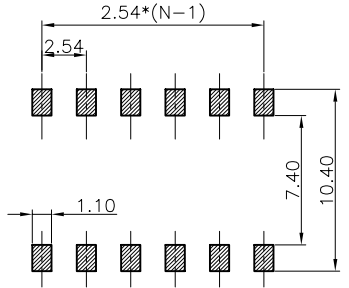
| REV. | DESCRIPTION | DRAWN | CHECKED | APPROVED |
|------|-------------|---------------|---------|----------|
| A | NEW RELEASE | YCH 04/27/10' | | |
| | | | | |
| | | | | |

N=Number of contacts

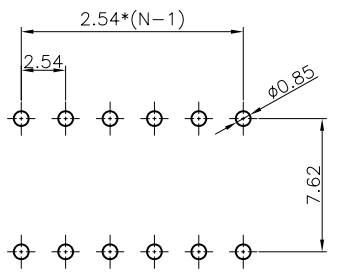


SMT TYPE

V/T TYPE



SMT TYPE



V/T TYPE

RECOMMEND P.C.B LAYOUT
Tolerance±0.05

NOTES:

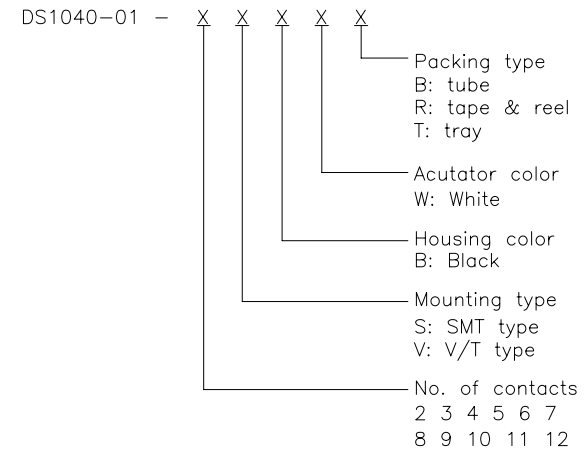
- MECHANICAL
 - Operation Force: 800g Max
 - Stroke: 1.00mm
 - Temperature: -40°C~+105°C
- MATERIALS
 - Base: Engineering Plastics,Black
 - Cover: Engineering Plastics,Blacks
 - Button: Engineering Plastics,White
 - Terminal: Alloy Copper, Gold plating
- ELECTRICAL
 - Electrical Life: 2000 operations cycles per switch
 - Non-Switching Rating: 100mA,50VDC
 - Switching rating: 25mA,24VDC
 - Contact resistance: 50mΩ Max. at initial; 100mΩ Max. after life test.
 - Insulation Resistance: 100MΩ,500VDC
 - Dielectric Strength: 500VAC/1 minute
 - Circuit: Single pole single throw

- 机械性能
 - 操作力: 800g Max
 - 推钮行程: 1.00mm
 - 温度: -40°C~+105°C

- 材料
 - 底座: 工程塑料, 黑色
 - 上盖: 工程塑料, 黑色
 - 推钮: 工程塑料, 白色
 - 端子: 铜合金 镀金

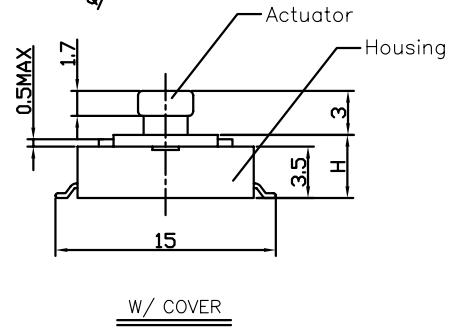
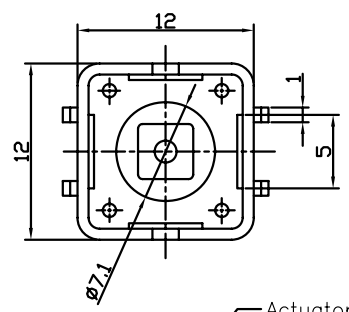
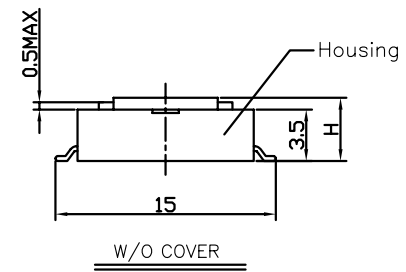
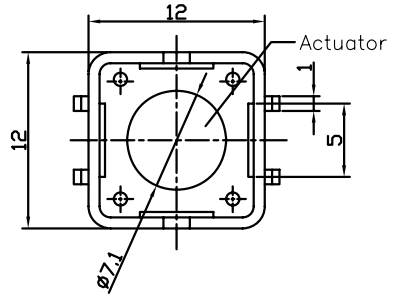
- 电器性能
 - 电器寿命: 在电压24VDC与电流25mA之下测试, 可来回拨动2000次
 - 开关不常切换的额定电流: 100mA, 耐压50VDC
 - 开关经常切换的额定电流: 250mA, 耐压24VDC
 - 接触阻抗: 初始值最大50mΩ; 测试后最大值100mΩ
 - 绝缘阻抗: 最小100MΩ, 500VDC
 - 耐压强度: 500VAC/1分钟
 - 回路: 单接点单选择

4. PRODUCT NUMBER CODE:



| | | | | | | | | |
|-------------------|-------|-------------------|--------|--|----|--------|----------------------------------|--|
| GENERAL TOLERANCE | | ANGLE TOLERANCE | | PROJECTION | | TITLE | SWITCH PITCH 2.54mm SMT&V/T TYPE | |
| X. | ±0.60 | X. | ±5° | UNITS | mm | SHEET | A4 | |
| .X | ±0.38 | .X | ±3° | SHEET SIZE | A4 | SERIES | DS1040-01 | |
| .XX | ±0.25 | .XX | ±2° | 晨翔电子有限公司 CONNFLY CONNFLY ELECTRONIC CO. LTD | | | | |
| DRAWING TYPE | | CUSTOMER | | | | | | |
| SCALE | 1:1 | SHEET | 1 OF 1 | | | | | |
| DRAWING NO. | | C-DS1040-01-XXXXX | | | | | | |

| REV. | DESCRIPTION | DRAWN | CHECKED | APPROVED |
|------|-------------|-------------|---------|----------|
| A | NEW RELEASE | HP 13/06/05 | | |
| | | | | |
| | | | | |



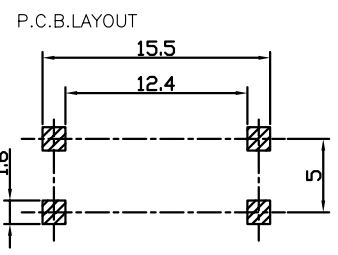
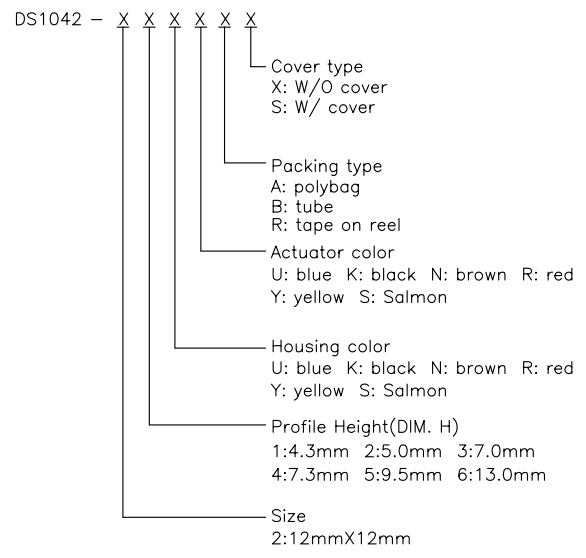
NOTES:

1. SPECIFICATIONS

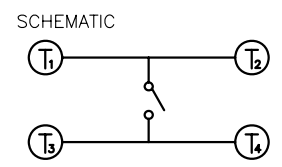
- . switch function: Single pole Single throw
- . contact rating: 50mA at 12vdc
- . insulation resistance: 100MΩ min at 500vdc
- . contact resistance: 100mΩ max
- . operating life: 100,00 cycles
- . operating force: see below

- . stop strength: place the switch such that vertical, a static load of 3kgf shall be applied in the direction of stem, operation for a period of 15 secs.
- . stroke: $(6 \times 6)0.25^{+0.2mm/-0.1mm} (12 \times 12)0.35 \pm 0.1mm$
- . operation temperature range: -20°C to 70°C
- . storage temperature range: -20°C to +70°C
- . wave soldering: recommended solder temperature at 500°F(260°C)max. 5 seconds, subject to pcb 1.6mm thickness.
- . hand soldering: use a soldering iron of 30 watts, controlled at 608°F(320°C) approximately 2 seconds while applying solder.

3. PRODUCT NUMBER CODE:



RECOMMEND P.C.B.LAYOUT(Tolerance=±0.05)



| GENERAL TOLERANCE | ANGLE TOLERANCE |
|-------------------|-----------------|
| X. ±0.60 | X. ±5° |
| .X ±0.38 | .X ±3° |
| .XX ±0.25 | .XX ±2° |

| DRAWING TYPE | CUSTOMER | |
|--------------|-----------------|--------------|
| SCALE | 1:1 | SHEET 1 OF 1 |
| DRAWING NO. | C-DS1042-XXXXXX | |

| PROJECTION | TITLE | TACT SWITCH SMT TYPE | |
|------------|-------|----------------------|--------|
| UNITS | mm | SERIES | DS1042 |

晨翔电子有限公司
CONNFLY CONNFLY ELECTRONIC CO. LTD

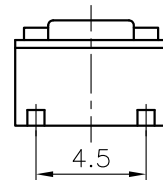
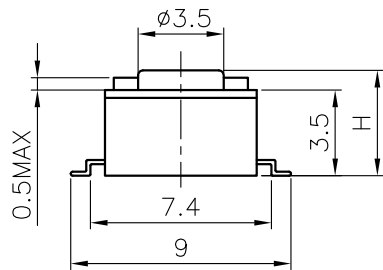
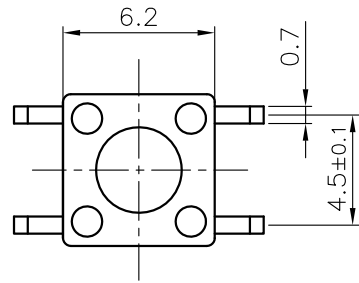
| REV. | DESCRIPTION | DRAWN | CHECKED | APPROVED |
|------|-------------|-------------|---------|----------|
| A | NEW RELEASE | LL 23/06/05 | | |
| | | | | |
| | | | | |

NOTES:

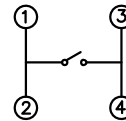
1. SPECIFICATIONS

- . Switch Function: Single Pole Single Throw
- . Contact Rating: 50mA at 12Vdc
- . Insulation Resistance:100MΩ min.
- . Contact Resistance:100mΩ max.
- . Operating Life:100,00 cycles

- . Stop Strength: Place The Switch Such That Vertical, A Static Load Of 3Kgf Shall Be Applied In The Direction
- . Operation Temperature Range: -25°C to +70°C
- . Wave Soldering: Recommended Solder Temperature At 500°F(260°C)max. 5 Seconds,Subject To PCB 1.6mm Thickness.
- . Hand Soldering: Use Soldering Iron Of 30 Watts,Controlled At 608°F(320°C)Approximately 2 Seconds.



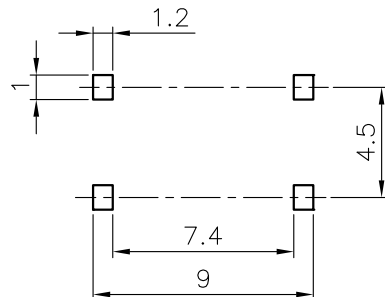
CIRCUIT DIAGRAM



2. PRODUCT NUMBER CODE:

DS1042-03 - X X X X X X

- Operating Life
 - 5: 50000 cycles
 - 10: 100000 cycles
- Operating force
 - 130: 130gf 160: 160gf
 - 170: 170gf 250: 250gf
- Packing type
 - A: polybag
 - B: tube
 - R: tape & reel
- Actuator color
 - K: black
- Housing color
 - K: black
- Profile Height(DIM. H)
 - 1:4.3mm 2:5.0mm 3:7.0mm
 - 4:7.3mm 5:9.5mm 6:13.0mm
 - 7:7.5mm 8:8.0mm 9:8.5mm
 - 10:12.0mm 11:12.5mm 12:17.0mm
 - 13:7.8mm
- Size
 - 1: 6mm*6mm



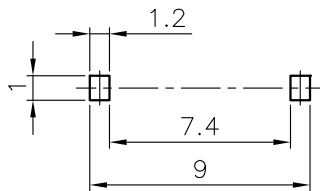
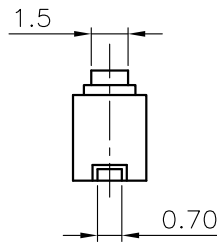
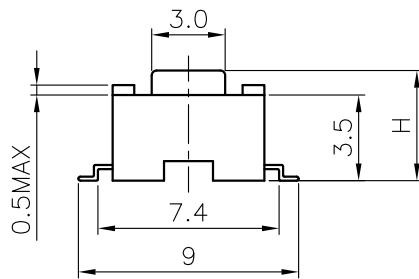
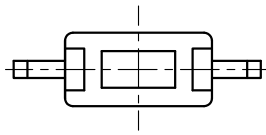
Recommend PCB layout
Tolerance±0.05

| | | | | | | | | |
|-------------------|-------|---------------------|-----|---|----|--------|------------------------------|--|
| GENERAL TOLERANCE | | ANGLE TOLERANCE | | PROJECTION | | TITLE | TACT SWITCH SMT TYPE 6mmX6mm | |
| X. | ±0.60 | X. | ±5° | UNITS | mm | | | |
| .X | ±0.38 | .X | ±3° | SHEET SIZE | A4 | SERIES | DS1042-03 | |
| .XX | ±0.25 | .XX | ±2° | 晨翔电子有限公司 CONFLY CONNFLY ELECTRONIC CO. LTD | | | | |
| DRAWING TYPE | | CUSTOMER | | | | | | |
| SCALE | | 1:1 SHEET 1 OF 1 | | | | | | |
| DRAWING NO. | | C-DS1042-03-1XXXXXX | | | | | | |

NOTES:

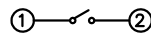
1. SPECIFICATIONS

- . Switch Function: Single Pole Single Throw
- . Contact Rating: 50mA at 12Vdc
- . Insulation Resistance:100MΩ min.
- . Contact Resistance:100mΩ max.
- . Operating Life:100,00 cycles



Recommend PCB layout
Tolerance±0.05

CIRCUIT DIAGRAM



| REV. | DESCRIPTION | DRAWN | CHECKED | APPROVED |
|------|-------------|-------------|---------|----------|
| A | NEW RELEASE | LL 12/15/06 | | |
| | | | | |
| | | | | |

- . Stop Strength: Place The Switch Such That Vertical, A Static Load Of 3Kgf Shall Be Applied In The Direction
- . Operation Temperature Range: -25°C to +70°C
- . Wave Soldering: Recommended Solder Temperature At 500°F(260°C)max. 5 Seconds,Subject To pcb 1.6mm Thickness.
- . Hand Soldering: Use Soldering Iron Of 30 Watts,Controlled At 608°F(320°C)Approximately 2 Seconds.

2. PRODUCT NUMBER CODE:

DS1042-03 - X X X X X X

- Operating Life
5: 50000 cycles
10: 100000 cycles
- Operating force
130: 130gf 160: 160gf
170: 170gf 250: 250gf
- Packing type
A: polybag
B: tube
R: tape & reel
- Actuator color
K: black
- Housing color
K: black
- Profile Height(DIM. H)
1:4.3mm 2:5.0mm 3:7.0mm
4:7.3mm 5:9.5mm 6:13.0mm
7:7.5mm 8:8.0mm 9:8.5mm
10:12.0mm 11:12.5mm 12:17.0mm
13:7.8mm
- Size
2: 3mm*6mm

| | | | | | | | | | | | |
|-------------------|-------|---------------------|-------|------------|---|--------|------------------------------|--|--|--------|--|
| GENERAL TOLERANCE | | ANGLE TOLERANCE | | PROJECTION | | TITLE | TACT SWITCH DIP TYPE 3mmX6mm | | | | |
| X. | ±0.60 | X. | ±5° | UNITS | mm | SERIES | DS1042-03 | | | | |
| .X | ±0.38 | .X | ±3° | SHEET SIZE | A4 | | | | | | |
| .XX | ±0.25 | .XX | ±2° | | | | | | | | |
| DRAWING TYPE | | CUSTOMER | | | 晨翔电子有限公司 CONNFLY CONNFLY ELECTRONIC CO. LTD | | | | | | |
| SCALE | | 1:1 | SHEET | | | | | | | 1 OF 1 | |
| DRAWING NO. | | C-DS1042-03-2XXXXXX | | | | | | | | | |