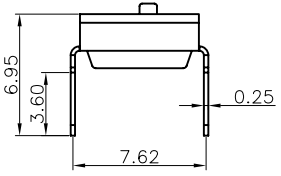
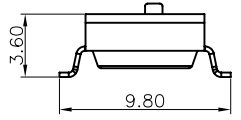
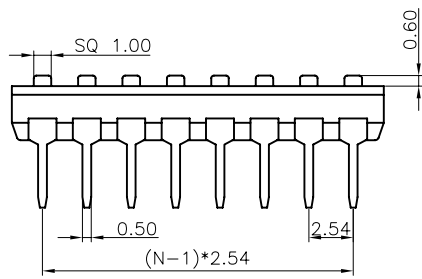
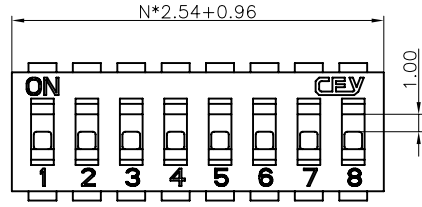


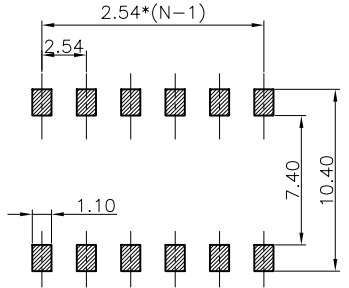
REV.	DESCRIPTION	DRAWN	CHECKED	APPROVED
A	NEW RELEASE	YCH 04/27/10'		

N=Number of contacts

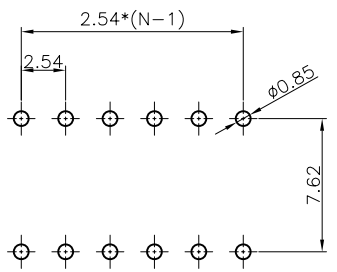


SMT TYPE

V/T TYPE



SMT TYPE



V/T TYPE

RECOMMEND P.C.B LAYOUT
Tolerance±0.05

NOTES:

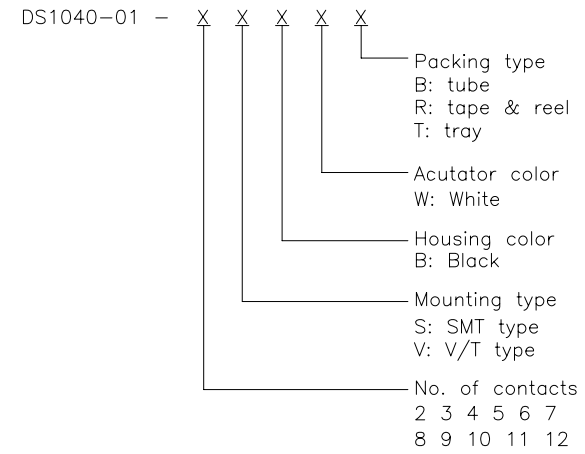
- MECHANICAL
 - Operation Force: 800g Max
 - Stroke: 1.00mm
 - Temperature: -40°C~+105°C
- MATERIALS
 - Base: Engineering Plastics,Black
 - Cover: Engineering Plastics,Blacks
 - Button: Engineering Plastics,White
 - Terminal: Alloy Copper, Gold plating
- ELECTRICAL
 - Electrical Life: 2000 operations cycles per switch
 - Non-Switching Rating: 100mA,50VDC
 - Switching rating: 25mA,24VDC
 - Contact resistance: 50mΩ Max. at initial; 100mΩ Max. after life test.
 - Insulation Resistance: 100MΩ,500VDC
 - Dielectric Strength: 500VAC/1 minute
 - Circuit: Single pole single throw

- 机械性能
 - 操作力: 800g Max
 - 推钮行程: 1.00mm
 - 温度: -40°C~+105°C

- 材料
 - 底座: 工程塑料, 黑色
 - 上盖: 工程塑料, 黑色
 - 推钮: 工程塑料, 白色
 - 端子: 铜合金 镀金

- 电器性能
 - 电器寿命: 在电压24VDC与电流25mA之下测试, 可来回拨动2000次
 - 开关不常切换的额定电流: 100mA, 耐压50VDC
 - 开关经常切换的额定电流: 250mA, 耐压24VDC
 - 接触阻抗: 初始值最大50mΩ; 测试后最大值100mΩ
 - 绝缘阻抗: 最小100MΩ, 500VDC
 - 耐压强度: 500VAC/1分钟
 - 回路: 单接点单选择

4. PRODUCT NUMBER CODE:



GENERAL TOLERANCE		ANGLE TOLERANCE		PROJECTION		TITLE	SWITCH PITCH 2.54mm SMT&V/T TYPE	
X.	±0.60	X.	±5°	UNITS	mm	SHEET	A4	
.X	±0.38	.X	±3°	SHEET SIZE	A4	SERIES	DS1040-01	
.XX	±0.25	.XX	±2°	晨翔电子有限公司 CONNFLY CONNFLY ELECTRONIC CO. LTD				
DRAWING TYPE		CUSTOMER						
SCALE	1:1	SHEET	1 OF 1					
DRAWING NO.		C-DS1040-01-XXXXX						

REV.	DESCRIPTION	DRAWN	CHECKED	APPROVED
A	NEW RELEASE	LL 23/06/05		

NOTES:

1. SPECIFICATIONS

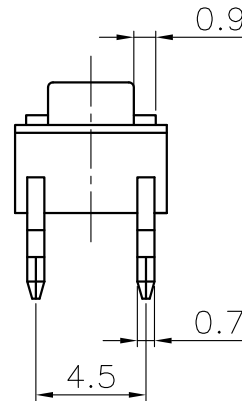
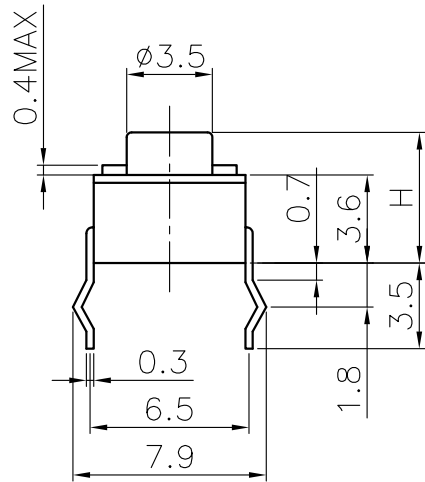
- . Switch Function: Single Pole Single Throw
- . Contact Rating: 50mA at 12Vdc
- . Insulation Resistance:100MΩ min.
- . Contact Resistance:100mΩ max.
- . Operating Life:100,00 cycles

- . Stop Strength: Place The Switch Such That Vertical, A Static Load Of 3Kgf Shall Be Applied In The Direction
- . Operation Temperature Range: -25°C to +70°C
- . Wave Soldering: Recommended Solder Temperature At 500°f(260°C)max. 5 Seconds,Subject To pcb 1.6mm Thickness.
- . Hand Soldering: Use Soldering Iron Of 30 Watts,Controlled At 608°f(320°C)Approximately 2 Seconds.

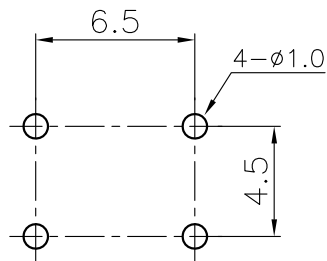
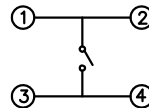
2. PRODUCT NUMBER CODE:

DS1041-01 - X X X X X X X

- Operating Life
5: 50000 cycles
10: 100000 cycles
- Operating force
130: 130gf 160: 160gf
170: 170gf 250: 250gf
- Packing type
A: polybag
B: tube
- Actuator color
K: black
- Housing color
K: black
- Profile Height(DIM. H)
1:4.3mm 2:5.0mm 3:7.0mm
4:7.3mm 5:9.5mm 6:13.0mm
7:7.5mm 8:8.0mm 9:8.5mm
10:12.0mm 11:12.5mm 12:17.0mm
13:7.8mm
- Size
1: 6mm*6mm



Circuit



Recommend PCB layout
Tolerance±0.05

GENERAL TOLERANCE		ANGLE TOLERANCE		PROJECTION		TITLE	TACT SWITCH DIP TYPE 6mmX6mm	
X.	±0.60	X.	±5°	UNITS	mm			
.X	±0.38	.X	±3°	SHEET SIZE	A4	SERIES	DS1041-01	
.XX	±0.25	.XX	±2°					
DRAWING TYPE		CUSTOMER						
SCALE		1:1	SHEET	1 OF 1				
DRAWING NO.		C-DS1041-01-1XXXXXX						

REV.	DESCRIPTION	DRAWN	CHECKED	APPROVED
A	NEW RELEASE	LL 12/15/06		

NOTES:

1. SPECIFICATIONS

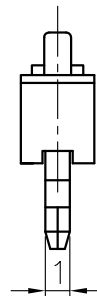
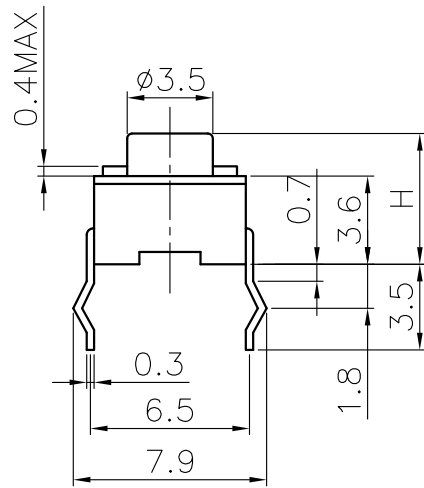
- . Switch Function: Single Pole Single Throw
- . Contact Rating: 50mA at 12Vdc
- . Insulation Resistance:100MΩ min.
- . Contact Resistance:100mΩ max.
- . Operating Life:100,00 cycles

- . Stop Strength: Place The Switch Such That Vertical, A Static Load Of 3Kgf Shall Be Applied In The Direction
- . Operation Temperature Range: -25°C to +70°C
- . Wave Soldering: Recommended Solder Temperature At 500°F(260°C)max. 5 Seconds,Subject To pcb 1.6mm Thickness.
- . Hand Soldering: Use Soldering Iron Of 30 Watts,Controlled At 608°F(320°C)Approximately 2 Seconds.

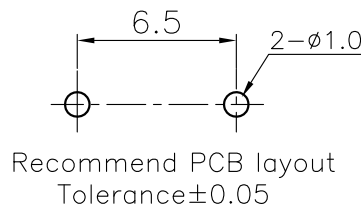
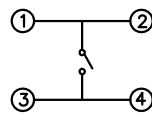
2. PRODUCT NUMBER CODE:

DS1041-01 - X X X X X X X

- Operating Life
5: 50000 cycles
10: 100000 cycles
- Operating force
130: 130gf 160: 160gf
170: 170gf 250: 250gf
- Packing type
A: polybag
B: tube
- Actuator color
K: black
- Housing color
K: black
- Profile Height(DIM. H)
1:4.3mm 2:5.0mm 3:7.0mm
4:7.3mm 5:9.5mm 6:13.0mm
7:7.5mm 8:8.0mm 9:8.5mm
10:12.0mm 11:12.5mm 12:17.0mm
13:7.8mm
- Size
2: 3mm*6mm

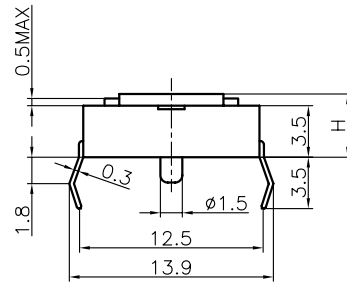
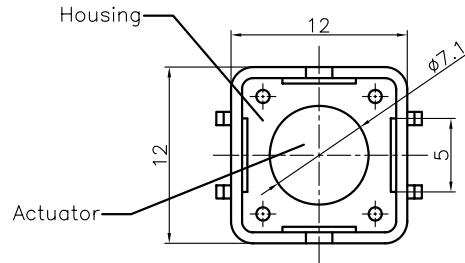


Circuit

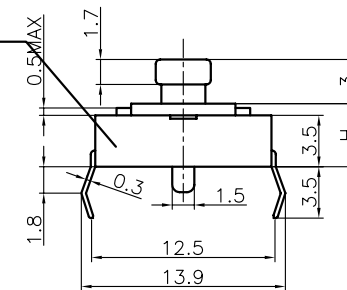
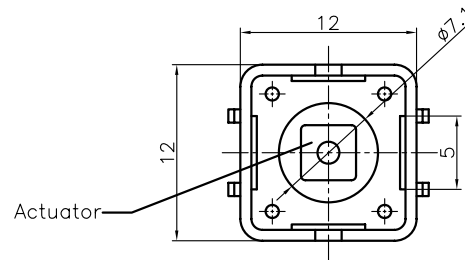


GENERAL TOLERANCE		ANGLE TOLERANCE		PROJECTION		TITLE	TACT SWITCH DIP TYPE 3mmX6mm	
X.	±0.60	X.	±5°	UNITS	mm	SHEET	DS1041-01	
.X	±0.38	.X	±3°	SHEET SIZE	A4	SERIES	DS1041-01	
.XX	±0.25	.XX	±2°	晨翔电子有限公司 CONNFLY CONNFLY ELECTRONIC CO. LTD				
DRAWING TYPE		CUSTOMER						
SCALE	1:1	SHEET	1 OF 1					
DRAWING NO.		C-DS1041-01-2XXXXXX						

REV.	DESCRIPTION	DRAWN	CHECKED	APPROVED
A	NEW RELEASE	HP 23/06/05		



WITHOUT COVER



WITH COVER

NOTES:

1. SPECIFICATIONS

- . switch function: Single pole Single throw
- . contact rating: 50mA at 12vdc
- . insulation resistance: 100MΩ min at 500vdc
- . contact resistance: 100mΩ max
- . operating life: 100,00 cycles
- . operating force: see below

- . stop strength: place the switch such that vertical, a static load of 3kgf shall be applied in the direction of stem, operation for a period of 15 secs.
- . stroke: $(6 \times 6) 0.25^{+0.2mm/-0.1mm} (12 \times 12) 0.35 \pm 0.1mm$
- . operation temperature range: -20°C to 70°C
- . storage temperature range: -20°C to +70°C
- . wave soldering: recommended solder temperature at 500°F (260°C) max. 5 seconds, subject to pcb 1.6mm thickness.
- . hand soldering: use soldering iron of 30 watts, controlled at 608°F (320°C) approximately 2 seconds while applying solder.

3. PRODUCT NUMBER CODE:

DS1041 - X X X X X X

Cover type
X: W/O cover
S: W/ cover

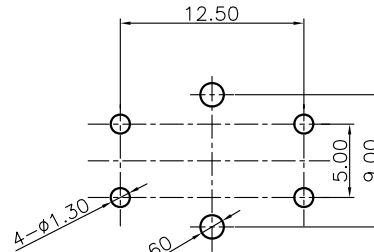
Packing type
A: polybag
B: tube

Actuator color
U: blue K: black N: brown R: red
S: Salmon Y: yellow

Housing color
U: blue K: black N: brown R: red
S: Salmon Y: yellow

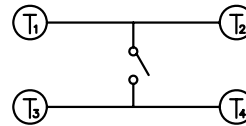
Profile Height (DIM. H)
1: 4.3mm 2: 5.0mm 3: 7.0mm
4: 7.3mm 5: 9.5mm 6: 13.0mm 7: 7.5mm

Size
2: 12mm X 12mm




RECOMMEND P.C.B. LAYOUT
TOLERANCE = ±0.05

SCHEMATIC



GENERAL TOLERANCE		ANGLE TOLERANCE	
X.	±0.60	X.	±5°
.X	±0.38	.X	±3°
.XX	±0.25	.XX	±2°
DRAWING TYPE		CUSTOMER	
SCALE		1:1	SHEET 1 OF 1
DRAWING NO.		C-DS1041-XXXXXX	

PROJECTION	TITLE	TACT SWITCH DIP TYPE	
UNITS	mm		
SHEET SIZE	A4	SERIES	DS1041

 晨翔电子有限公司
CONNFLY CONNFLY ELECTRONIC CO. LTD