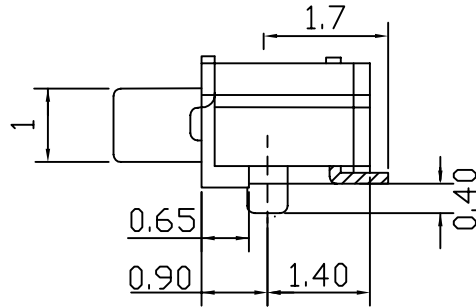
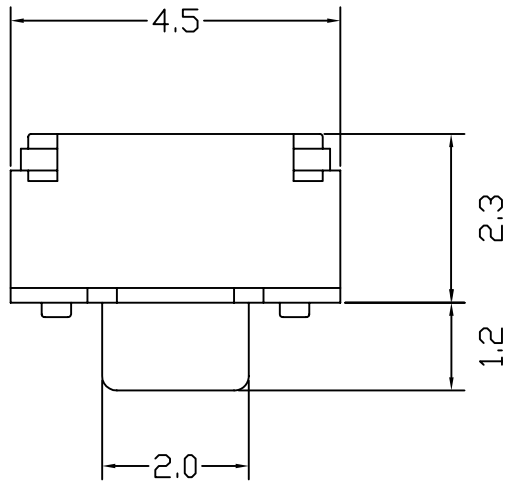
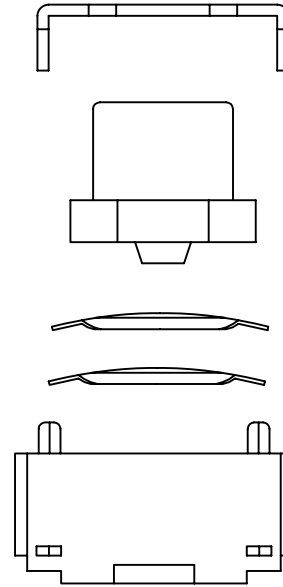
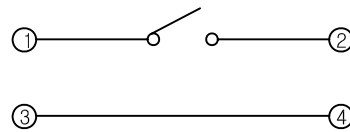


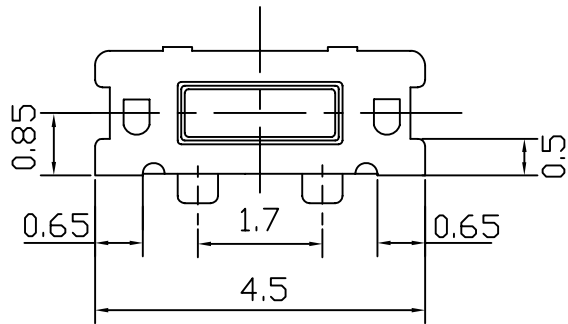
Dimension



Circuit diagram

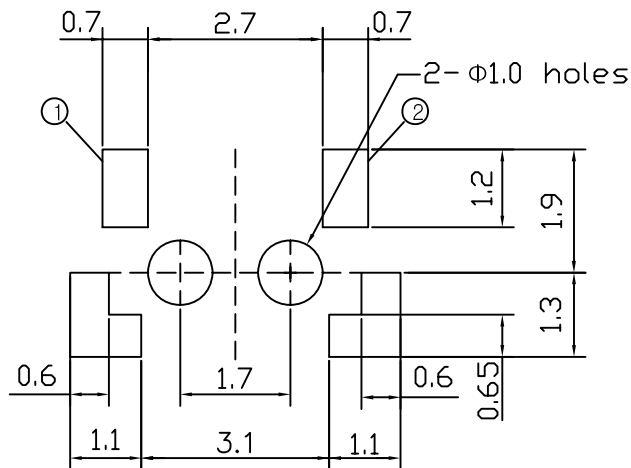


ASS'Y METHOD



P.C.B Mounting

Pattern Dimension



SPECIFICATIONS

1. RATING : DC 12V, 20mA Max
2. CIRCUIT : 1C - 1P
3. OPERATING FORCE : 160 ± 50gf
4. CONTACT RESISTANCE : 100mΩ Max
5. TRAVEL : 0.2 ± 0.1mm
6. LIFE : 100,000 Cycles Max
7. TOLERANCE : ± 0.2mm

APPROVAL	CHECK	DESIGN	User
			Tact Switch
			Model name
			1198E