

PANZONE® ZONE CABLING SYSTEMS

Panduit provides a complete line of zone cabling products for open office architecture applications, telecommunication enclosures, data centers, wireless deployments, and network integration of a Connected Building Solution. Each zone cabling product serves as a main distribution point for a particular zone increasing network flexibility, manageability, accessibility, and efficiency. Utilizing a distributed network and a zone cabling topology for your physical infrastructure can solve telecommunication room congestion. In addition, centralized fiber backbone cables can be integrated into the solution in order to extend the reach of your network beyond copper limitations.

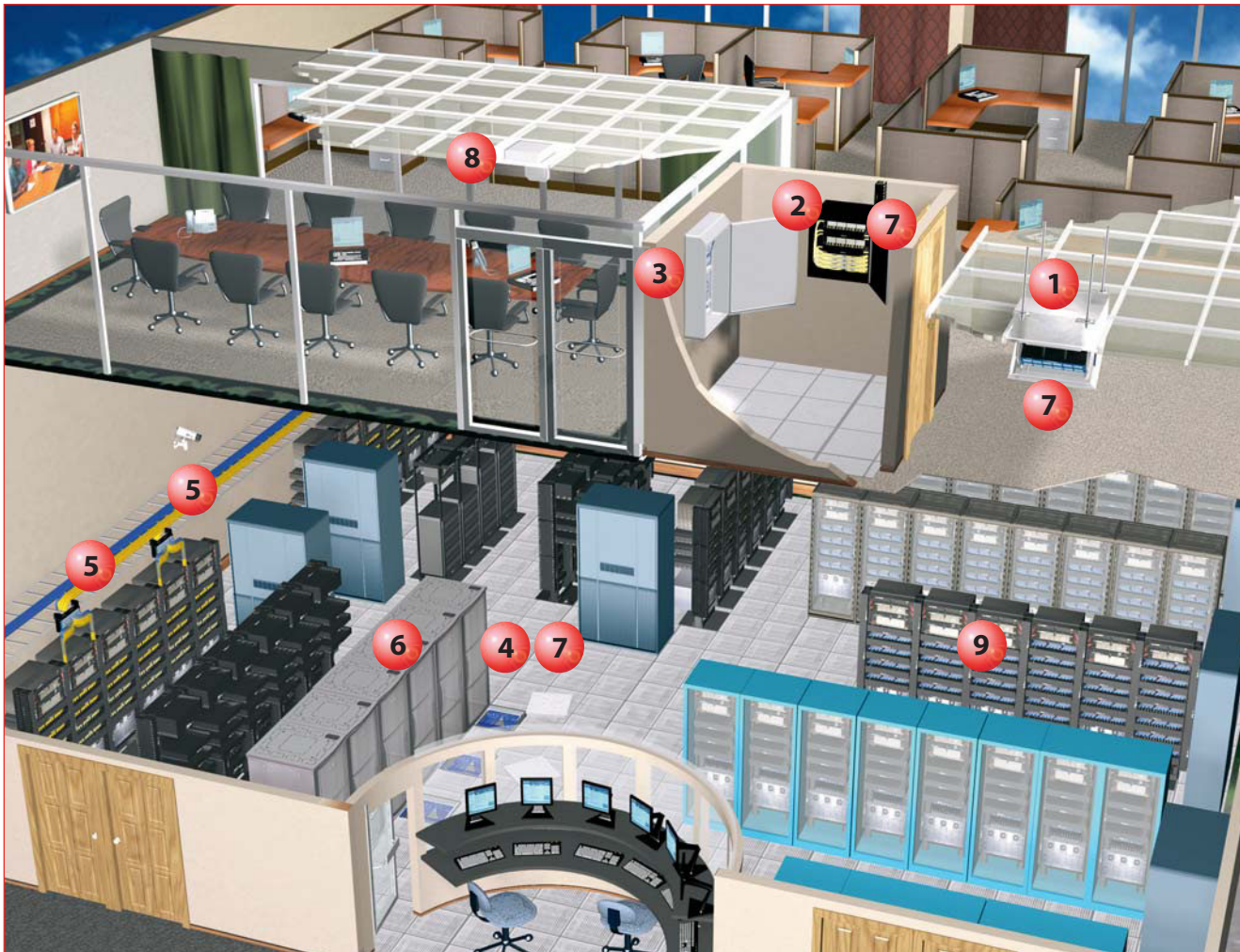


- Consolidation points, MuTOA, zone distribution areas, and telecommunication enclosures can be used to create a zone cabling system that is TIA/EIA-568-B, 569-B, and 942 compliant
- Provide accessibility and flexibility to reconfigure offices to meet frequently changing organizational requirements
- Provide the ability to make moves, adds, and changes quickly and easily
- Reduce network downtime when changes are required
- Can solve telecommunication room congestion
- Provide a low cost alternative for installations that need to be upgraded or reconfigured
- Provide a complete end-to-end network solution that integrates the Panduit wired structured cabling with the Cisco* wireless network equipment

Panduit zone cabling products are completely modular, accepting all Mini-Com® Modules for STP and UTP, fiber optic, and audio/video applications. Zone cabling products accommodate multimedia solutions and can be used in floor, ceiling, and wall mount applications while providing a complete end-to-end network solution. With a zone cabling topology in place, IT managers provide themselves with a scalable physical network infrastructure that meets their needs today as well as the flexibility to deploy the technology of tomorrow.

*Cisco is a registered trademark of Cisco Technology, Inc.

Zone Cabling Systems Roadmap



1 PanZone® In-Ceiling Enclosures (page E.3)



6 Net-Access® Server Cabinet (pages L.19 – L.22)



2 PanZone® Wall Mount Cabinet (page E.4)



7 PanZone® Cable Assemblies (page E.9)



3 PanZone® Building Automation Systems Enclosure (page E.5)



8 PanZone® Wireless Access Point Enclosures (pages F.4 – F.5)



4 PanZone® Raised Floor Enclosure (page E.7)



9 Racks and Cable Management (pages L.59 – L.84)



5 PanZone® Overhead Distribution Racks (page E.6)



PanZone® In-Ceiling Enclosures

- Designed to accept up to 2 RU of active electronics as deep as 17.5" and up to 6 RU of standard 19" passive connectivity (PZICEA only)
- Designed to accept up to 8 RU standard 19" passive connectivity (PZICE only)
- Thermal management design optimizes air flow for improved heat dissipation; ideal for high heat load PoE enabled switch applications
- Mount in 2' x 2', 2' x 4', and 2' x 6' drop ceilings
- 50 pound door weight capacity
- Include door plate, equipment mounting bracket, integrated horizontal cable slack manager
- AC power ready – receptacle not included (PZICEA only)
- Includes low decibel 60 CFM fan (PZICEA only)



PZICEA



PZICE



PZICFK-E

Part Number	Part Description	No. of Rack Spaces [^]	Std. Pkg. Qty.
PanZone® In-Ceiling Enclosures			
PZICEA	Fully assembled in-ceiling active enclosure. Accepts up to 2 RU of active network equipment and up to 6 RU of passive product. Includes mounting brackets, integrated horizontal slack manager, AC power provisions, fan assembly, air dam, and electrical junction box. External dimensions: 13.50"H x 25.50"W x 27.50"D (342.9mm x 647.7mm x 698.5mm). Internal dimensions: 11.49"H x 22.31"W x 22.46"D (291.8mm x 566.7mm x 570.5mm).	5	1
PZICE	Fully assembled in-ceiling enclosure. Accepts up to 8 RU of standard 19" patch panels. Includes mounting brackets and integrated horizontal slack manager. External dimensions: 13.50"H x 25.50"W x 27.50"D (342.9mm x 647.7mm x 698.5mm). Internal dimensions: 11.49"H x 22.31"W x 22.46"D (291.8mm x 566.7mm x 570.5mm).	—	1
PanZone® Accessories			
PZICFK-E	In-ceiling enclosure fan kit power conversion for european regions. Converts fan within in-ceiling active enclosure (PZICEA with 60 CFM fan) to accept 220 VAC/50 Hz power. Includes fan assembly with Shuko plug, air dam, and electrical junction box.	—	1
PZICFRK	Filter replacement kit, includes five pairs of air inlet filters.	—	1
StructuredGround™ Grounding Kit			
PZICGK	Grounding and bonding kit includes all components to properly ground enclosure and two network switches.	—	1

[^]One rack space = 1.75" (44.45mm).



PanZone[®] Wall Mount Cabinets

- Hold 12 RU of active and passive network equipment plus two additional RU for power strips and small electronic devices (modems, routers, etc.)
- Structurally engineered to swing freely even under maximum load capacity
- Thermal management design (vents, perforated doors, and optional fan) optimizes air flow for improved heat dissipation; ideal for high heat load PoE enabled switch applications
- Working load rating of 250 lbs.
- Adjustable rails mount at 1" increments to accommodate various depths of network equipment including PoE switches
- Individual rack spaces are identified for ease of equipment mounting

**PZC12S****PZC12P****PZC12W****PZCHSM2****PZBR4****PZCGK**

Part Number	Part Description	No. of Rack Spaces [^]	Std. Pkg. Qty.
-------------	------------------	---------------------------------	----------------

PanZone[®] Wall Mount Cabinets

PZC12S	Wall mount cabinet with a solid front door; black. Dimensions: 25.81"H x 25.00"W x 22.85"D (655.6mm x 635.0mm x 580.4mm).	12	1
PZC12P	Wall mount cabinet with perforated front door; black. Dimensions: 25.81"H x 25.00"W x 22.85"D (655.6mm x 635.0mm x 580.4mm).	12	1
PZC12W	Wall mount cabinet with windowed front door; black. Dimensions: 25.81"H x 25.00"W x 22.85"D (655.6mm x 635.0mm x 580.4mm).	12	1

PanZone[®] Cable Management Options

PZCHSM2	Wall mount cabinet horizontal slack manager; black. Dimensions: 3.50"H x 19.00"W x 13.00"D (88.9mm x 482.6mm x 330.2mm).	2	2
PZBR3	Cable bend radius post, 3" length.	—	—
PZBR4	Cable bend radius post, 4" length.	—	—

PanZone[®] Accessories

PZCFK	Wall mount cabinet fan kit; kit includes one 115 VAC fan rated at 112 CFM.	—	1
PZCFK-E	Wall mount cabinet fan kit – european version, 220 VAC with Shuko plug.	—	1
PZCFR	Wall mount filter replacement kit.	—	1

StructuredGround[™] Grounding Kit

PZCGK	Grounding and bonding kit; includes all components to properly ground cabinet.	—	1
--------------	--	---	---

[^]One rack space = 1.75" (44.45mm).



PanZone® Active Wall Mount Enclosure

- Holds up to 3 RU of passive product and up to 3 RU of active equipment
- Provides optimal cable management by allowing adequate space to route and manage patch cords
- Patch panel bracket rotates 90° and accepts 19" rack mountable product allowing easy installation
- Provides multiple cable entry/exit points via knockouts
- Design accepts all standard 19" patch panels
- Door can be assembled to hinge on either the right or left side providing flexibility and easy access for any mounting location
- Front cover has standard padlock feature; optional keyed locks available
- Vented design and optional fan provides thermal management for switches and power supplies



PZAEWM3

Part Number	Part Description	No. of Rack Spaces [^]	Std. Pkg. Qty.	Std. Ctn. Qty.
PanZone® Active Wall Mount Enclosure				
PZAEWM3	Active wall mount enclosure includes mounting template for quick installation. Dimensions: 38.50"H x 27.92"W x 8.61"D (977.9mm x 709.2mm x 218.7mm).	6	1	—
PanZone® Air Exchange Fan				
PZAEFAN	Wall mount enclosure fan kit. Kit includes one 115 VAC fan rated at 112 CFM. Enclosure accepts up to two fan kits.	—	1	—
PZAEFK-E	Wall mount enclosure fan kit – european version, 220 VAC with Shuko plug. Fan rated at 112 CFM. Enclosure accepts up to two fan kits.	—	1	—
PanZone® Accessories				
PZAELOCK	Optional keyed lock set; includes two locks with keys.	—	1	10
StructuredGround™ Grounding Kit				
PZAEGBK	One tin-plated copper bracket; 3.92"L x .56"W x .79"H (99.6mm x 14.2mm x 20.1mm); provided with four #12-24 screws, one each #10-32 and #10-24 hex nut, #10 split lock washer, grounding washer, and ESD protection sticker.	—	1	—

All product color is gray.
[^]One rack space = 1.75" (44.45mm).



PanZone® Building Automation Systems Enclosure

- Integrates data communications and Building Automation Systems (BAS) by converging the infrastructure into a single ethernet network
- Minimizes installation costs by consolidating BAS equipment into a single enclosure
- Eliminates redundant cable runs
- Provides optimal cable routing and management of patch cords and electrical components
- Vented design and optional fan provides thermal management for network equipment and power supplies



PZBASE3

Part Number	Part Description	No. of Rack Spaces [^]	Color	Std. Pkg. Qty.
PZBASE3	Building automation systems enclosure. Includes perforated panel 32.00"H x 22.50"W (812.8mm x 571.5mm) for mounting BAS devices. Dimensions: 48.50"H x 35.00"W x 8.60"D (1231.9mm x 889.0mm x 218.4mm).	3	White	1
PZBASELK	Optional keyed lock set; includes two locks with keys.	—	—	1

[^]One rack space = 1.75" (44.45mm).
 To bond building automation system enclosure sections, see the StructuredGround™ Enclosure Grounding kit on page M.23.



Consolidation Point Boxes

- Suitable for wall mount and underfloor applications
- UL 2043 approved for use in air-handling spaces for copper applications

- Accept Mini-Com[®] Modules for STP and UTP, fiber optic, and audio/video, which snap in and out for easy moves, adds, and changes
- Supplied with cable management accessories
- Optional fiber conversion kit available

**CUFMB24BL****CUFB48BL**

Part Number	Part Description	Std. Pkg. Qty.	Std. Ctn. Qty.
CUFMB24BL	24-port aluminum underfloor consolidation point box includes pre-printed numbered labels with writable surface on back when pre-numbered labels are not applicable. Dimensions: 1.69"H x 10.85"W x 10.67"L (42.9mm x 275.6mm x 271.0mm).	1	—
CUFB48BL	48-port underfloor consolidation point box made of 16 gauge rugged steel for long term durability. Dimensions: 1.63"H x 10.00"W x 14.88"L (41.4mm x 254.0mm x 378.0mm).	1	—
CUFF-KIT	Optional fiber conversion kit to be used with CUFB48BL and CUFMB24BL. Kit includes: four Panduit [®] Pan-Ty [®] Cable Ties, four wire saddles, two adhesive fiber spools, two support brackets to hold fiber cable, one grounding lug, one laser warning label, one fiber warning label and two rubber grommets.	1	10



PanZone[®] Work Area Raised Floor Consolidation Point Enclosures

- Work with standard office raised floor tiles
- Include Cool Boot[®] Raised Floor Air Sealing Grommet for quick moves, adds, and changes
- Accept all Mini-Com[®] Modules
- Accept field terminated or pre-terminated connectivity solutions
- Secure lockable cover



Part Number	Part Description	Std. Pkg. Qty.
ACE48	Fully assembled office raised floor consolidation point enclosure mounts in 10.5" x 10.5" cutout in one raised floor tile; black finish. Support 48 copper cables or up to 96 fiber cables, accepts Mini-Com [®] Modules. Dimensions: 12.37"H x 12.45"W x 7.88"D (314mm x 316mm x 200mm)	1

PanZone[®] Overhead Distribution Racks

- Ideal solution for adding more rack spaces above racks or cabinets in data centers or telecommunication rooms
- Universal mounting bracket can be mounted to most industry ladder racks, wire basket, or suspended by threaded rod from ceiling
- Multiple mounting configurations
- 40/60/80 lbs. load rating
- Optional cable management solutions (PZBR4 and CMVDR2)

**PZLRB6U**

Part Number	Part Description	Std. Pkg. Qty.
PZLRB2U	2 RU ladder rack bracket. Bracket fits Wyr-Grid [®] Overhead Cable Tray. Dimensions: 8.75"H x 20.26"W x 3.26"D (222.3mm x 514.6mm x 82.8mm)	1
PZLRB4U	4 RU ladder rack bracket. Bracket fits Wyr-Grid [®] Overhead Cable Tray. Dimensions: 12.25"H x 20.26"W x 3.26"D (311.2mm x 514.6mm x 82.8mm)	1
PZLRB6U	6 RU ladder rack bracket. Bracket fits Wyr-Grid [®] Overhead Cable Tray. Dimensions: 15.75"H x 20.26"W x 3.26"D (400.1mm x 514.6mm x 82.8mm)	1

One rack space = 1.75" (44.45mm).



PanZone® Raised Floor Enclosures

- Work with standard office raised floor tiles
- Include Cool Boot® Raised Floor Air Sealing Grommet for quick moves, adds, and changes
- Accept all Mini-Com® Modules
- Accept field terminated or pre-terminated connectivity solutions
- Secure lockable cover
- Compatible with 7/8" square, 1" diameter, 1 1/2" diameter, and 2" diameter raised floor pedestals



PZRFE4U



PZRFE8U



PZRFE12U



PZRFC

Part Number	Part Description	No. of Rack Spaces [^]	Std. Pkg. Qty.
PZRFE4U	Fully assembled raised floor enclosure requires 6" minimum raised floor depth; black finish. Accepts 4 RU of standard patch panels or 2 RU of QuickNet™ Pre-Terminated Assemblies or Cassettes. UL and c-UL Listed. Dimensions: 22.62"H x 22.62"W x 5.0"D (575mm x 575mm x 127mm).	4	1
PZRFE8U	Fully assembled raised floor enclosure requires 9.5" minimum raised floor depth; black finish. Accepts 8 RU of standard patch panels or 4 RU of QuickNet™ Pre-Terminated Assemblies or Cassettes. UL and c-UL Listed. Dimensions: 22.62"H x 22.62"W x 8.5"D (575mm x 575mm x 216mm).	8	1
PZRFE12U	Fully assembled raised floor enclosure requires 13" minimum raised floor depth; black finish. Accepts 12 RU of standard patch panels or 6 RU of QuickNet™ Pre-Terminated Assemblies or Cassettes. UL and c-UL Listed. Dimensions: 22.6"H x 22.6"W x 12.0"D (575mm x 575mm x 305mm).	12	1
PZRFC	Lockable cover for PanZone® Raised Floor Enclosures, includes two keys. Dimensions: 24.0"H x 24.0"W x .75"D (610mm x 610mm x 19.05mm).	—	1

[^]One rack space = 1.75" (44.45mm).



Punchdown Consolidation Point Enclosures

- UL 2043 approved for use in air-handling spaces
- Meet ANSI/TIA-568-C.2 standard
- Mount to wall, above ceiling, and/or below floor



WMCPE



GPB24-X

Part Number	Part Description	Std. Pkg. Qty.
WMCPE	Punchdown consolidation point enclosure. UL2043 approved for use in air handling spaces. Punchdown kit sold separately. Dimensions: 3.44"H x 9.47"W x 13.22"L (87.4mm x 240.5mm x 335.8mm).	1

All product color is black.

Punchdown Bases



GPB144-X



P110B100-X

GPB24-X	Positions and holds UTP wire for termination with Category 6 connecting blocks.	10
GPB144-X	Positions and holds UTP wire for termination with Category 6 punchdown connecting blocks.	10
P110B100-X	Positions and holds UTP cable for termination with Pan-Punch [®] 110 Connecting Blocks. For frame or rack mount wiring behind bases.	10

Image reflects standard density punchdown base.



PanZone[®] Wall Mount Consolidation Point Enclosures

- Can be directly mounted to a wall or recessed into a wall
- Include grommet edging, labels, and Tak-Ty[®] Hook & Loop Cable Ties
- Accommodate up to four 100-pair punchdown bases or optional patch panel bracket (PZBPPB) can be used to accommodate up to 2 RU of standard 19" patch panels
- Conduit knockouts of 1 3/4" – 2" are available on top and bottom; conduit knockouts of 1 1/2" are available on the sides
- Option of flat cover or hinged lockable door (each sold separately)



PZB4



PZB4-HC

Part Number	Part Description	Std. Pkg. Qty.	Std. Ctn. Qty.
PanZone[®] Wall Mount Consolidation Point Enclosure			
PZB4	Enclosure, door not included; select PZB4-HC or PZB4FC. Dimensions: 25.00"H x 14.50"W x 4.65"D (635.0mm x 368.3mm x 118.1mm).	1	—
PZB4-HC	Hinged door to be used with PanZone [®] Enclosure (PZB4) when recessed in a wall. Reversible door can hinge from either side and includes lock with tab release.	1	—
PZB4-FC	Flat cover to be used with PanZone [®] Enclosure (PZB4) when mounting to wall.	1	—



PZB4-FC



PZBPPB

PanZone[®] Enclosure Bracket

PZBPPB	Patch panel bracket accommodates up to 2 RU of standard 19" patch panels. Includes one pair of brackets.	1	10
--------	--	---	----

One rack space = 1.75" (44.45mm).



PanZone® Cable Assemblies

- Exceed ANSI/TIA-568-C.2 and ISO 11801 standards for permanent link performance
- Meet requirements of IEEE 802.3af and IEEE 802.3at for PoE applications
- PanZone® Category 6 and Category 6A Cable Assemblies for use in zone cabling applications
- Available in plug to jack module and plug to plug configurations
- Available in plenum or riser
- T568B wired
- 100% performance tested to permanent link limits



Plug to Plug Shielded Cable Assembly



Jack to Plug UTP Cable Assembly

Part Number	Part Description	Length (Ft.)‡	Cable Type	Cable Color	Std. Pkg. Qty.	Std. Ctn. Qty.
-------------	------------------	---------------	------------	-------------	----------------	----------------

Plug to Plug Cable Assemblies Category 6A Shielded

SAPPBU25	Category 6A, FTP, solid, plenum cable with TX6A™ 10Gig™ Shielded Modular Plugs on each end.	25	FTP Solid Plenum	Blue	1	10
SAPRBU25	Category 6A, FTP, solid, riser cable with TX6A™ 10Gig™ Modular Plugs on each end.	25	FTP Solid Riser	Blue	1	10

Category 6A UTP

UAPPBU25	Category 6A, UTP, solid, plenum cable with TX6A™ 10Gig™ Modular Plugs on each end.	25	UTP Solid Plenum	Blue	1	10
UAPRBU25	Category 6A, UTP, solid, riser cable with TX6A™ 10Gig™ Modular Plugs on each end.	25	UTP Solid Riser	Blue	1	10

Category 6 UTP

UPPBU25Y	Category 6, UTP, solid, plenum cable with TX6™ PLUS Modular Plugs on each end.	25	UTP Solid Plenum	Blue	1	10
UPRBU25Y	Category 6, UTP, solid, riser cable with TX6™ PLUS Modular Plugs on each end.	25	UTP Solid Riser	Blue	—	—

Jack to Plug Cable Assemblies Category 6A Shielded

SAJPBU25BL	Category 6A, FTP, solid, plenum cable with a TX6A™ 10Gig™ Shielded Modular Plug on one end and a black Mini-Com® TX6A™ 10Gig™ Shielded Jack Module on the other.	25	FTP Solid Plenum	Blue	1	10
SAJRBU25BL	Category 6A, FTP, solid, riser cable with a TX6A™ 10Gig™ Shielded Modular Plug on one end and a black Mini-Com® TX6A™ 10Gig™ Shielded Jack Module on the other.	25	FTP Solid Riser	Blue	1	10

Category 6A UTP

UAJPBU25BL	Category 6A, UTP, solid, plenum cable with a TX6A™ 10Gig™ Modular Plug on one end and a black Mini-Com® TX6A™ 10Gig™ Jack Module on the other.	25	UTP Solid Plenum	Blue	1	10
UAJRBU25BL	Category 6A, UTP, solid, riser cable with a TX6A™ 10Gig™ Modular Plug on one end and a black Mini-Com® TX6A™ 10Gig™ Jack Module on the other.	25	UTP Solid Riser	Blue	1	10

Category 6 UTP

UJPBU25BLY	Category 6, UTP, solid, plenum cable with a TX6™ PLUS Modular Plug on one end and a black Mini-Com® TX6™ PLUS Jack Module on the other.	25	UTP Solid Plenum	Blue	1	10
UJRBU25BLY	Category 6, UTP, solid, riser cable with a TX6™ PLUS Modular Plug on one end and a black Mini-Com® TX6™ PLUS Jack Module on the other.	25	UTP Solid Riser	Blue	—	10

TX6A™ 10Gig™ Shielded Patch Cords, found on page B.14, can be used as plug to plug cable assemblies.

‡For lengths 10 to 100 feet (five foot increments) and 110, 120, 130, 140, 150 feet change the length designation in the part number to the desired length. For example, the part number for a 100 foot, plug to plug, Category 6A, shielded, riser cable assembly is SAPRBU100.

A.
System
Overview

B.
Copper
Systems

C.
Fiber
Optic
Systems

D.
Power
over
Ethernet

E.
Zone
Cabling

F.
Wireless

G.
Outlets

H.
Media
Distribution

I.
Physical
Infrastructure
Management

J.
Overhead &
Underfloor
Routing

K.
Surface
Raceway

L.
Cabinets,
Racks &
Cable
Management

M.
Grounding &
Bonding

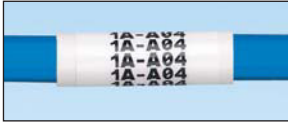
N.
Industrial

O.
Labeling &
Identification

P.
Cable
Management
Accessories

Q.
Index

Cable Labels for PanZone[®] Cable Assemblies



Suggested Label Solutions for TIA/EIA-606-A Compliance

Cable Part Number	Laser/Ink Jet Desktop Printer Label	TDP43ME Thermal Transfer Desktop Printer Label	PanTher™ LS8E Hand-Held Printer Label	Cougar™ LS9 Hand-Held Printer Label
All Pan-Zone [®] Cable Assemblies	S100X150YAJ	S100X150VATY	S100X150VAC	T100X000CBC-BK

For complete labeling solutions and product information, reference charts on pages O.1 – O.22.