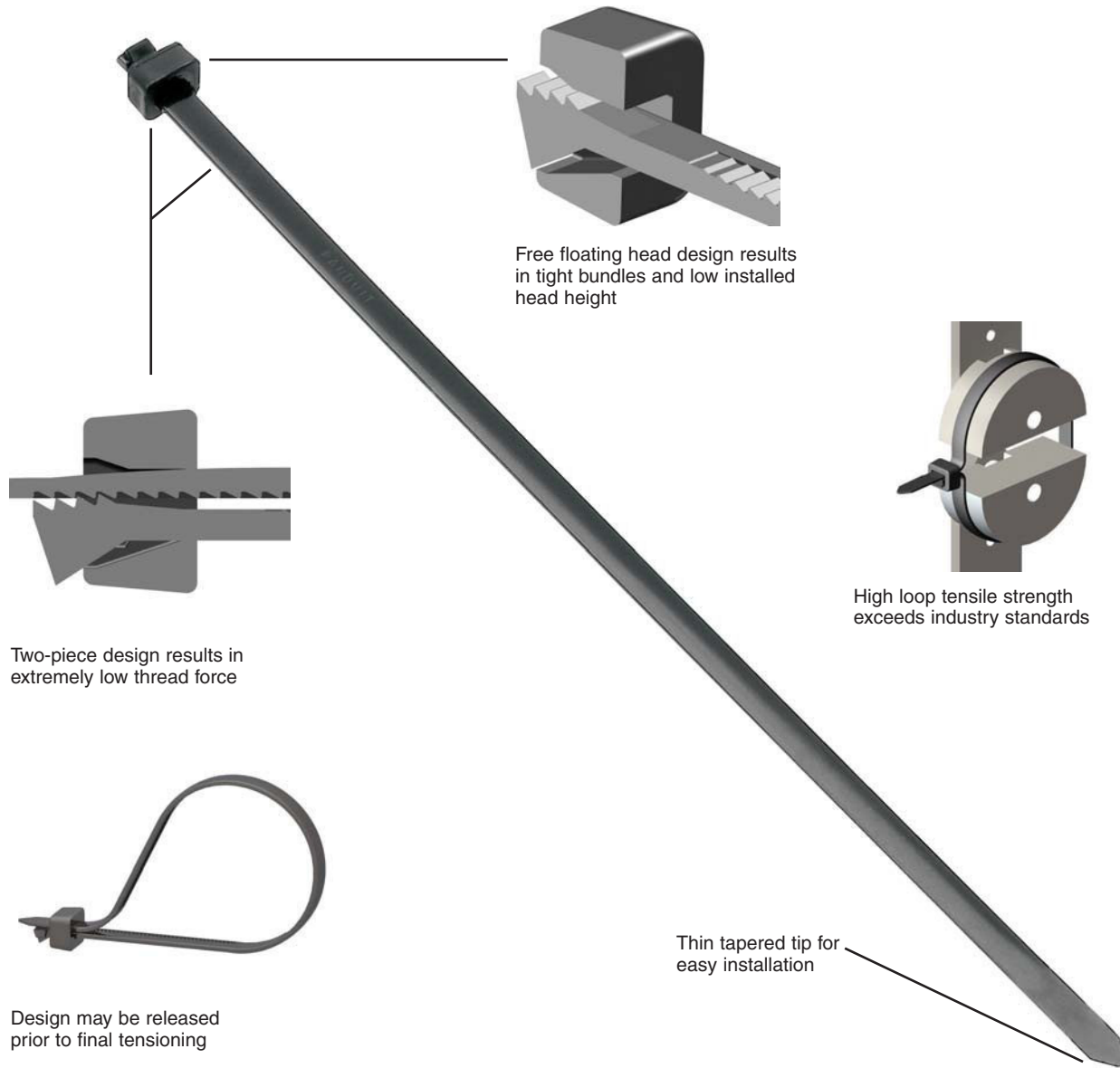


Features and Benefits – Sta-Strap® Cable Ties

Two-piece design incorporates a separate nylon head and strap.



Free floating head design results in tight bundles and low installed head height

Two-piece design results in extremely low thread force

High loop tensile strength exceeds industry standards

Thin tapered tip for easy installation

Design may be released prior to final tensioning



Cable tie tools speed installation and reduce total installed cost. See pages B1.109 – B1.114.



Cable tie accessories are used to speed and simplify the mounting of wires, cables, and tubing. See pages B2.1 – B2.29.

A. System Overview

B1. Cable Ties

B2. Cable Accessories

B3. Stainless Steel Ties

C1. Wiring Duct

C2. Surface Raceway

C3. Abrasion Protection

C4. Cable Management

D1. Terminals

D2. Power Connectors

D3. Grounding Connectors

E1. Labeling Systems

E2. Labels

E3. Pre-Printed & Write-On Markers

E4. Permanent Identification

E5. Lockout/Tagout & Safety Solutions

F. Index

A. System Overview

Selection Guide – Sta-Strap® Cable Ties

B1. Cable Ties



B2. Cable Accessories

B3. Stainless Steel Ties

C1. Wiring Duct

C2. Surface Raceway

C3. Abrasion Protection

C4. Cable Management

D1. Terminals

D2. Power Connectors

D3. Grounding Connectors

E1. Labeling Systems

E2. Labels

E3. Pre-Printed & Write-On Markers

E4. Permanent Identification

E5. Lockout/Tagout & Safety Solutions

F. Index

| Material, Color (Suffix) | Style/Function | Part Number Prefix | Catalog Page |
|--|----------------------|--------------------|--------------|
| Nylon 6.6, Natural (No Suffix) | Locking Ties/Bundle | SST | B1.67 |
| | Clamp Ties/Mount | SSC | B1.70 |
| | Marker Ties/Identify | SSM | B1.71 |
| Weather Resistant Nylon 6.6, Black (0) | Locking Ties/Bundle | SST | B1.68 |
| | Clamp Ties/Mount | SSC | B1.70 |
| | Marker Ties/Identify | SSM | B1.71 |
| Heat Stabilized Nylon 6.6, Black (30) | Locking Ties/Bundle | SST | B1.69 |
| | Clamp Ties/Mount | SSC | B1.70 |

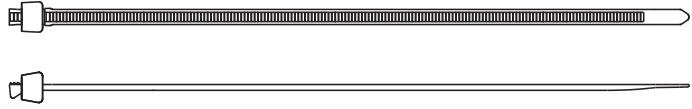
Part Number System for Sta-Strap® Cable Ties

| SST | 1 | M | — | C | — |
|--|-----------------------------------|---|--|--|----------------|
| Type | Size | Cross Section | Screw Hole Size | Package Size | Material/Color |
| SST = Locking Tie SSC = Clamp Tie SSM = Marker Tie | Approx. Maximum Bundle Dia. (In.) | M = Miniature I = Intermediate S = Standard H = Heavy HH = Heavy Head | (Clamp Ties Only) -S6 = #6 (M3) -S10 = #10 (M5) -S25 = 1/4 (M6) | L = 50 C = 100 D = 500 M = 1000 | See Page B1.72 |

UL® US C SP® Sta-Strap® Cable Ties – Nylon 6.6

- For indoor use
- Used for normal bundling and through-panel applications
- Small head height allows more efficient use of space in compact areas

- Exclusive two-piece design offers the lowest threading force in the industry
- Average 14% lighter than one-piece cable ties
- Releasable prior to final tensioning for bundle modifications



| Part Number | Length | | Width | | Thickness | | Max. Bundle Dia. | | Min. Loop Tensile Str. | | Recommended Installation Tool | Std. Pkg. Qty. | Std. Ctn. Qty. |
|-----------------------------------|--------|-----|-------|-----|-----------|-----|------------------|-----|------------------------|-----|--|----------------|----------------|
| | In. | mm | In. | mm | In. | mm | In. | mm | Lbs. | N | | | |
| Miniature Cross Section | | | | | | | | | | | | | |
| SST1M-C | 4.0 | 102 | .095 | 2.4 | .035 | .9 | .78 | 20 | 18 | 80 | GTS, GTSL, GS2B, PTS, PPTS, STS2 | 100 | 1000 |
| SST1.5M-C | 5.5 | 140 | .095 | 2.4 | .037 | .9 | 1.25 | 32 | 18 | 80 | | 100 | 1000 |
| Intermediate Cross Section | | | | | | | | | | | | | |
| SST1.5I-C | 5.3 | 137 | .135 | 3.4 | .037 | .9 | 1.25 | 32 | 40 | 178 | GTS, GTSL, GS2B, PTS, PPTS, STS2 | 100 | 1000 |
| SST2I-C | 8.1 | 206 | .135 | 3.4 | .040 | 1.0 | 2.00 | 51 | 40 | 178 | | 100 | 1000 |
| SST3I-C | 11.0 | 279 | .135 | 3.4 | .040 | 1.0 | 3.00 | 76 | 40 | 178 | | 100 | 1000 |
| SST4I-C | 14.7 | 375 | .135 | 3.4 | .040 | 1.0 | 4.00 | 102 | 40 | 178 | | 100 | 1000 |
| Standard Cross Section | | | | | | | | | | | | | |
| SST1.5S-M | 5.7 | 146 | .180 | 4.6 | .045 | 1.2 | 1.25 | 32 | 50 | 222 | GTS, GTSL, GS2B, GTH, GS4H, PTS, PTH, PPTS, STS2, STH2 | 1000 | 25000 |
| SST2S-C | 6.7 | 172 | .180 | 4.6 | .045 | 1.2 | 1.75 | 45 | 50 | 222 | | 100 | 1000 |
| SST3S-C | 11.0 | 279 | .180 | 4.6 | .048 | 1.2 | 3.00 | 76 | 50 | 222 | | 100 | 1000 |
| SST4S-C | 15.0 | 381 | .180 | 4.6 | .048 | 1.2 | 4.00 | 102 | 50 | 222 | | 100 | 1000 |
| Light-Heavy Cross Section | | | | | | | | | | | | | |
| SST2H-D | 8.0 | 203 | .300 | 7.6 | .062 | 1.6 | 2.00 | 51 | 120 | 534 | GTH, GS4H, GS4EH, PTH, STH2, ST3EH | 500 | 5000 |
| SST4H-L | 14.8 | 376 | .300 | 7.6 | .067 | 1.7 | 4.00 | 102 | 120 | 534 | | 50 | 500 |
| SST8H-L | 27.5 | 699 | .300 | 7.6 | .067 | 1.7 | 8.00 | 203 | 120 | 534 | | 50 | 500 |

A. System Overview

B1. Cable Ties

B2. Cable Accessories

B3. Stainless Steel Ties

C1. Wiring Duct

C2. Surface Raceway

C3. Abrasion Protection

C4. Cable Management

D1. Terminals

D2. Power Connectors

D3. Grounding Connectors

E1. Labeling Systems

E2. Labels

E3. Pre-Printed & Write-On Markers

E4. Permanent Identification

E5. Lockout/Tagout & Safety Solutions

F. Index

A. System Overview

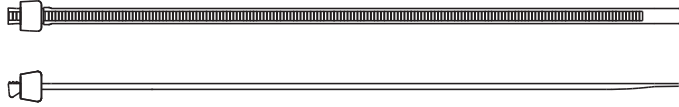
Sta-Strap® Cable Ties – Weather Resistant Nylon 6.6

B1. Cable Ties

- Greater resistance to damage caused by ultraviolet light – indoor or outdoor use
- Used for normal bundling and through-panel applications
- Small head height allows more efficient use of space in compact areas
- Exclusive two-piece design offers the lowest threading force in the industry
- Average 14% lighter than one-piece cable ties
- Releasable prior to final tensioning for bundle modifications

B2. Cable Accessories

B3. Stainless Steel Ties



C1. Wiring Duct

C2. Surface Raceway

C3. Abrasion Protection

C4. Cable Management

D1. Terminals

D2. Power Connectors

D3. Grounding Connectors

E1. Labeling Systems

E2. Labels

E3. Pre-Printed & Write-On Markers

E4. Permanent Identification

E5. Lockout/Tagout & Safety Solutions

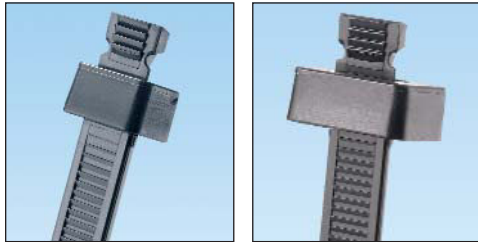
F. Index

| Part Number | Length | | Width | | Thickness | | Max. Bundle Dia. | | Min. Loop Tensile Str. | | Recommended Installation Tool | Std. Pkg. Qty. | Std. Ctn. Qty. |
|-----------------------------------|--------|-----|-------|-----|-----------|-----|------------------|-----|------------------------|-----|--|----------------|----------------|
| | In. | mm | In. | mm | In. | mm | In. | mm | Lbs. | N | | | |
| Miniature Cross Section | | | | | | | | | | | | | |
| SST1M-C0 | 4.0 | 102 | .095 | 2.4 | .035 | .9 | .78 | 20 | 18 | 80 | GTS, GTSL, GS2B, PTS, PPTS, STS2 | 100 | 1000 |
| SST1.5M-M0 | 5.5 | 140 | .095 | 2.4 | .037 | .9 | 1.25 | 32 | 18 | 80 | | 1000 | 50000 |
| Intermediate Cross Section | | | | | | | | | | | | | |
| SST1.5I-M0 | 5.3 | 137 | .135 | 3.4 | .037 | .9 | 1.25 | 32 | 40 | 178 | GTS, GTSL, GS2B, PTS, PPTS, STS2 | 1000 | 25000 |
| SST2I-M0 | 8.1 | 206 | .135 | 3.4 | .040 | 1.0 | 2.00 | 51 | 40 | 178 | | 1000 | 25000 |
| SST3I-C0 | 11.0 | 279 | .135 | 3.4 | .040 | 1.0 | 3.00 | 76 | 40 | 178 | | 100 | 1000 |
| SST4I-M0 | 14.7 | 375 | .135 | 3.4 | .040 | 1.0 | 4.00 | 102 | 40 | 178 | | 1000 | 10000 |
| Standard Cross Section | | | | | | | | | | | | | |
| SST1.5S-M0 | 5.7 | 146 | .180 | 4.6 | .045 | 1.2 | 1.25 | 32 | 50 | 222 | GTS, GTSL, GS2B, GTH, GS4H, PTS, PTH, PPTS, STS2, STH2 | 1000 | 25000 |
| SST2S-C0 | 6.7 | 172 | .180 | 4.6 | .045 | 1.2 | 1.75 | 45 | 50 | 222 | | 100 | 1000 |
| SST3S-C0 | 11.0 | 279 | .180 | 4.6 | .048 | 1.2 | 3.00 | 76 | 50 | 222 | | 100 | 1000 |
| SST4S-C0 | 15.0 | 381 | .180 | 4.6 | .048 | 1.2 | 4.00 | 102 | 50 | 222 | | 100 | 1000 |
| Light-Heavy Cross Section | | | | | | | | | | | | | |
| SST2H-D0 | 8.0 | 203 | .300 | 7.6 | .062 | 1.6 | 2.00 | 51 | 120 | 534 | GTH, GS4H, GS4EH, PTH, STH2, ST3EH | 500 | 5000 |
| SST4H-L0 | 14.8 | 376 | .300 | 7.6 | .067 | 1.7 | 4.00 | 102 | 120 | 534 | | 50 | 500 |
| SST8H-L0 | 27.5 | 699 | .300 | 7.6 | .067 | 1.7 | 8.00 | 203 | 120 | 534 | | 50 | 500 |

UL® cUL® Sta-Strap® Cable Ties – Heat Stabilized Nylon 6.6

- For high temperature applications up to 239°F (115°C) – indoor use
- Used for normal bundling and through-panel applications
- *Heavy head* design is available for use in through-panel applications with a larger opening up to .400" (10.2mm)
- Small head height allows more efficient use of space in compact areas

- Exclusive two-piece design offers the lowest threading force in the industry
- Average 14% lighter than one-piece cable ties
- Releasable prior to final tensioning for bundle modifications



SST

SST2HH



| Part Number | Length | | Width | | Thickness | | Max. Bundle Dia. | | Min. Loop Tensile Str. | | Recommended Installation Tool | Std. Pkg. Qty. | Std. Ctn. Qty. |
|--|--------|-----|-------|-----|-----------|-----|------------------|-----|------------------------|-----|--|----------------|----------------|
| | In. | mm | In. | mm | In. | mm | In. | mm | Lbs. | N | | | |
| Miniature Cross Section | | | | | | | | | | | | | |
| SST1M-M30 | 4.0 | 102 | .095 | 2.4 | .035 | .9 | .78 | 20 | 18 | 80 | GTS, GTSL, GS2B, PTS, PPTS, STS2 | 1000 | 50000 |
| SST1.5M-M30 | 5.5 | 140 | .095 | 2.4 | .037 | .9 | 1.25 | 32 | 18 | 80 | | 1000 | 50000 |
| Standard Cross Section | | | | | | | | | | | | | |
| SST2S-M30 | 6.7 | 172 | .180 | 4.6 | .045 | 1.2 | 1.75 | 45 | 50 | 222 | GTS, GTSL, GS2B, GTH, GS4H, PTS, PTH, PPTS, STS2, STH2 | 1000 | 15000 |
| SST3S-M30 | 11.0 | 279 | .180 | 4.6 | .048 | 1.2 | 3.00 | 76 | 50 | 222 | | 1000 | 10000 |
| SST4S-M30 | 15.0 | 381 | .180 | 4.6 | .048 | 1.2 | 4.00 | 102 | 50 | 222 | | 1000 | 5000 |
| Light-Heavy Cross Section | | | | | | | | | | | | | |
| SST4H-D30 | 14.8 | 376 | .300 | 7.6 | .067 | 1.7 | 4.00 | 102 | 120 | 534 | GTH, GS4H, GS4EH, PTH, STH2, ST3EH | 500 | 2500 |
| SST8H-D30 | 27.5 | 699 | .300 | 7.6 | .067 | 1.7 | 8.00 | 203 | 120 | 534 | | 500 | 2000 |
| Heavy Head Design Light-Heavy Cross Section | | | | | | | | | | | | | |
| SST2HH-D30 | 8.0 | 203 | .300 | 7.6 | .062 | 1.6 | 2.00 | 50 | 120 | 534 | GTH, GS4H, GS4EH, PTH, STH2, ST3EH | 500 | 2500 |
| SST4HH-D30 | 14.8 | 376 | .300 | 7.6 | .062 | 1.6 | 4.00 | 102 | 120 | 534 | | 500 | 2500 |

A. System Overview

B1. Cable Ties

B2. Cable Accessories

B3. Stainless Steel Ties

C1. Wiring Duct

C2. Surface Raceway

C3. Abrasion Protection

C4. Cable Management

D1. Terminals

D2. Power Connectors

D3. Grounding Connectors

E1. Labeling Systems

E2. Labels

E3. Pre-Printed & Write-On Markers

E4. Permanent Identification

E5. Lockout/Tagout & Safety Solutions

F. Index

A. System Overview

cUL^{us} cSR^{us} Sta-Strap® Clamp Ties

- Natural nylon material for indoor use
- Weather resistant material has greater resistance to damage caused by ultraviolet light – indoor or outdoor use
- Heat stabilized material for high temperature applications up to 239°F (115°C) – indoor use
- Design allows for bundling before or after screwing clamp in place

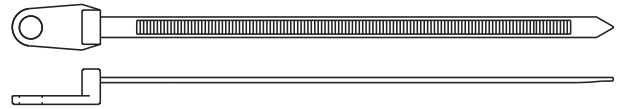
- Exclusive two-piece design offers the lowest threading force in the industry
- Used to secure a cable bundle to another surface such as a control panel, communication rack, wall or ceiling
- Only clamp tie that is releasable prior to final tensioning



SSC2S-S10-C



SSC2S-S10-M0



B1. Cable Ties

B2. Cable Accessories

B3. Stainless Steel Ties

C1. Wiring Duct

C2. Surface Raceway

C3. Abrasion Protection

C4. Cable Management

D1. Terminals

D2. Power Connectors

D3. Grounding Connectors

E1. Labeling Systems

E2. Labels

E3. Pre-Printed & Write-On Markers

E4. Permanent Identification

E5. Lockout/Tagout & Safety Solutions

F. Index

| Part Number | Length | | Width | | Thickness | | Nominal Hole Dia. | | Screw Size | Metric Screw Size | Max. Bundle Dia. | | Min. Loop Tensile Str. | | Recommended Installation Tool | Std. Pkg. Qty. | Std. Ctn. Qty. |
|-------------|--------|----|-------|----|-----------|----|-------------------|----|------------|-------------------|------------------|----|------------------------|---|-------------------------------|----------------|----------------|
| | In. | mm | In. | mm | In. | mm | In. | mm | | | In. | mm | Lbs. | N | | | |

Nylon 6.6

Standard Cross Section

| | | | | | | | | | | | | | | | | | |
|--------------------|------|-----|------|-----|------|-----|------|-----|-----|----|------|-----|----|-----|--|-----|------|
| SSC2S-S6-C | 7.4 | 187 | .180 | 4.6 | .045 | 1.1 | .148 | 3.8 | #6 | M3 | 1.75 | 45 | 50 | 222 | GTS, GTSL, GS2B, GTH, GS4H, PTS, PTH, PPTS, STS2, STH2 | 100 | 1000 |
| SSC2S-S10-C | 7.4 | 187 | .180 | 4.6 | .045 | 1.1 | .200 | 5.1 | #10 | M5 | 1.75 | 45 | 50 | 222 | | 100 | 1000 |
| SSC4S-S10-C | 15.7 | 398 | .180 | 4.6 | .045 | 1.1 | .200 | 5.1 | #10 | M5 | 4.00 | 102 | 50 | 222 | | 100 | 500 |

Light-Heavy Cross Section

| | | | | | | | | | | | | | | | | | |
|-------------|------|-----|------|-----|------|-----|------|-----|-----|----|------|-----|-----|-----|------------------------------------|----|-----|
| SSC4H-S25-L | 15.6 | 395 | .300 | 7.6 | .065 | 1.7 | .260 | 6.6 | 1/4 | M6 | 4.00 | 102 | 120 | 534 | GTH, GS4H, GS4EH, PTH, STH2, ST3EH | 50 | 500 |
|-------------|------|-----|------|-----|------|-----|------|-----|-----|----|------|-----|-----|-----|------------------------------------|----|-----|

Weather Resistant Nylon 6.6

Standard Cross Section

| | | | | | | | | | | | | | | | | | |
|---------------------|------|-----|------|-----|------|-----|------|-----|-----|----|------|-----|----|-----|--|------|-------|
| SSC2S-S6-M0 | 7.4 | 187 | .180 | 4.6 | .045 | 1.1 | .148 | 3.8 | #6 | M3 | 1.75 | 45 | 50 | 222 | GTS, GTSL, GS2B, GTH, GS4H, PTS, PTH, PPTS, STS2, STH2 | 1000 | 10000 |
| SSC2S-S10-M0 | 7.4 | 187 | .180 | 4.6 | .045 | 1.1 | .200 | 5.1 | #10 | M5 | 1.75 | 45 | 50 | 222 | | 1000 | 10000 |
| SSC4S-S10-M0 | 15.7 | 398 | .180 | 4.6 | .045 | 1.1 | .200 | 5.1 | #10 | M5 | 4.00 | 102 | 50 | 222 | | 1000 | 5000 |

Light-Heavy Cross Section

| | | | | | | | | | | | | | | | | | |
|--------------|------|-----|------|-----|------|-----|------|-----|-----|----|------|-----|-----|-----|------------------------------------|-----|------|
| SSC4H-S25-D0 | 15.6 | 395 | .300 | 7.6 | .065 | 1.7 | .260 | 6.6 | 1/4 | M6 | 4.00 | 102 | 120 | 534 | GTH, GS4H, GS4EH, PTH, STH2, ST3EH | 500 | 2500 |
|--------------|------|-----|------|-----|------|-----|------|-----|-----|----|------|-----|-----|-----|------------------------------------|-----|------|

Heat Stabilized Nylon 6.6

Standard Cross Section

| | | | | | | | | | | | | | | | | | |
|----------------------|-----|-----|------|-----|------|-----|------|-----|-----|----|------|----|----|-----|--|------|-------|
| SSC2S-S10-M30 | 7.4 | 187 | .180 | 4.6 | .045 | 1.2 | .200 | 5.1 | #10 | M5 | 1.75 | 45 | 50 | 222 | GTS, GTSL, GS2B, GTH, GS4H, PTS, PTH, PPTS, STS2, STH2 | 1000 | 10000 |
|----------------------|-----|-----|------|-----|------|-----|------|-----|-----|----|------|----|----|-----|--|------|-------|

Light-Heavy Cross Section

| | | | | | | | | | | | | | | | | | |
|---------------|------|-----|------|-----|------|-----|------|-----|-----|----|------|-----|-----|-----|------------------------------------|-----|------|
| SSC4H-S25-D30 | 15.6 | 395 | .300 | 7.6 | .065 | 1.7 | .260 | 6.6 | 1/4 | M6 | 4.00 | 102 | 120 | 534 | GTH, GS4H, GS4EH, PTH, STH2, ST3EH | 500 | 2500 |
|---------------|------|-----|------|-----|------|-----|------|-----|-----|----|------|-----|-----|-----|------------------------------------|-----|------|

Stra-Strap® Marker Ties – Nylon and Weather Resistant Nylon 6.6

- Natural nylon material for indoor use
- Weather resistant material has greater resistance to damage caused by ultraviolet light – indoor or outdoor use
- Used to fasten and identify bundles at the same time
- Unique design allows tie to be used as a wrap-around or flag marker

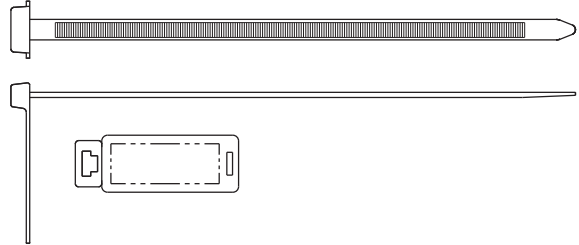
- Can be marked with Panduit Marker Pens on page B1.51 or computer printable labels
- Custom imprinting with text, symbols, or trademarks available using Panduit Custom Hot Stamping Service, see page B1.91



SSM2S-C



SSM2S-D0



| Part Number | Marker Type | Length | | Width | | Thickness | | Marker Write-On Area | | Max. Bundle Dia. | | Min. Loop Tensile Str. | | Recommended Installation Tool | Std. Pkg. Qty. | Std. Ctn. Qty. |
|-------------|-------------|--------|----|-------|----|-----------|----|----------------------|----|------------------|----|------------------------|---|-------------------------------|----------------|----------------|
| | | In. | mm | In. | mm | In. | mm | In. | mm | In. | mm | Lbs. | N | | | |

Nylon 6.6

Standard Cross Section

| | | | | | | | | | | | | | | | | |
|----------------|-----------|------|-----|------|-----|------|-----|-----------|-------------|------|-----|----|-----|--|-----|------|
| SSM2S-C | Wrap/Flag | 6.7 | 170 | .180 | 4.6 | .045 | 1.1 | .44 x .96 | 11.2 x 24.4 | 1.75 | 45 | 50 | 222 | GTS, GTSL, GS2B, GTH, GS4H, PTS, PTH, PPTS, STS2, STH2 | 100 | 500 |
| SSM4S-D | Wrap/Flag | 14.9 | 378 | .180 | 4.6 | .045 | 1.1 | .44 x .96 | 11.2 x 24.4 | 4.00 | 102 | 50 | 222 | | 500 | 5000 |

Weather Resistant Nylon 6.6

Standard Cross Section

| | | | | | | | | | | | | | | | | |
|-----------------|-----------|-----|-----|------|-----|------|-----|-----------|-------------|------|----|----|-----|--|-----|-------|
| SSM2S-D0 | Wrap/Flag | 6.7 | 170 | .180 | 4.6 | .045 | 1.1 | .44 x .96 | 11.2 x 24.4 | 1.75 | 45 | 50 | 222 | GTS, GTSL, GS2B, GTH, GS4H, PTS, PTH, PPTS, STS2, STH2 | 500 | 10000 |
|-----------------|-----------|-----|-----|------|-----|------|-----|-----------|-------------|------|----|----|-----|--|-----|-------|

A.
System Overview

B1.
Cable Ties

B2.
Cable Accessories

B3.
Stainless Steel Ties

C1.
Wiring Duct

C2.
Surface Raceway

C3.
Abrasion Protection

C4.
Cable Management

D1.
Terminals

D2.
Power Connectors

D3.
Grounding Connectors

E1.
Labeling Systems

E2.
Labels

E3.
Pre-Printed & Write-On Markers

E4.
Permanent Identification

E5.
Lockout/Tagout & Safety Solutions

F.
Index

A.
System
Overview

Sta-Strap® Cable Ties

B1.
Cable Ties

Material and Color Chart

| Material | Color | Panduit Suffix |
|-----------------------------|---------|----------------|
| Nylon 6.6 | Natural | ✓ |
| Weather Resistant Nylon 6.6 | Black | 0 |
| Nylon 6.6 | Red | 2 |

| Material | Color | Panduit Suffix |
|---------------------------|-------|----------------|
| Nylon 6.6 | Black | 20 |
| Heat Stabilized Nylon 6.6 | Black | 30 |

✓Denotes Panduit Natural Nylon 6.6 (no suffix).

C1.
Wiring
Duct

C2.
Surface
Raceway

C3.
Abrasion
Protection

Part Number Availability List

| | Standard Packaging | | | Bulk Packaging | | |
|--------------------------------|--------------------|-------------------|-----------------------|----------------|-------------------|-----------------------|
| | Part Number | Natural Nylon 6.6 | Material/Color Suffix | Part Number | Natural Nylon 6.6 | Material/Color Suffix |
| C4. Cable Management | SSC2S-S6-C | ✓ | | SSC2S-S6-M | ✓ | 0 |
| | SSC2S-S10-C | ✓ | | SSC2S-S10-M | ✓ | 0,30 |
| | SSC4S-S10-C | ✓ | | SSC4S-S10-M | ✓ | 0 |
| D1. Terminals | SSC4H-S25-L | ✓ | | SSC4H-S25-D | ✓ | 0 |
| | SSM2S-C | ✓ | | SSM2S-D | ✓ | 0 |
| D2. Power Connectors | | | | SSM4S-D | ✓ | |
| | SST1M-C | ✓ | 0 | SST1M-M | ✓ | 0,20,30 |
| | SST1.5M-C | ✓ | | SST1.5M-M | ✓ | 0,20,30 |
| | SST1.5I-C | ✓ | | SST1.5I-M | ✓ | 0 |
| D3. Grounding Connectors | SST2I-C | ✓ | | SST2I-M | ✓ | 0 |
| | SST3I-C | ✓ | 0 | SST3I-M | ✓ | 0 |
| | SST4I-C | ✓ | | SST4I-M | ✓ | 0 |
| E1. Labeling Systems | | | | SST1.5S-M | ✓ | 0 |
| | SST2S-C | ✓ | 0 | SST2S-M | ✓ | 0,20,30 |
| | SST3S-C | ✓ | 0 | SST3S-M | ✓ | 0,20,30 |
| | SST4S-C | ✓ | 0 | SST4S-M | ✓ | 0,2,30 |
| | | | | SST2H-D | ✓ | 0 |
| E2. Labels | | | | SST2HH-D | | 30 |
| | SST4H-L | ✓ | 0 | SST4H-D | ✓ | 0,30 |
| | | | 0 | SST4HH-D | | 30 |
| | | 0 | SST8H-D | ✓ | 0,30 | |

E3.
Pre-Printed
& Write-On
Markers

E4.
Permanent
Identification

E5.
Lockout/
Tagout
& Safety
Solutions

F.
Index