

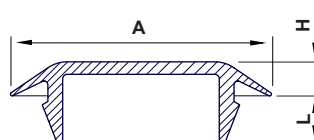
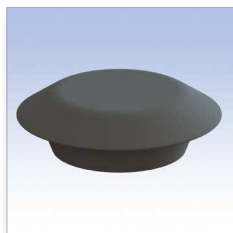
■ **Materiale:** Polietilene PE-LD / Polyethylene PE-LD

■ **Tutte le quote sono in mm. / All dimensions are in mm.**

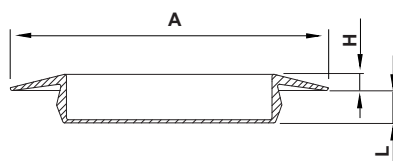
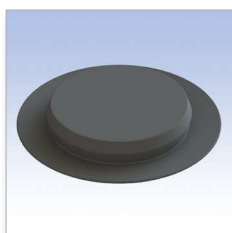
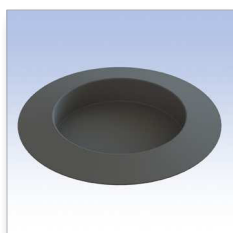
■ **Colore:** Nero / Colour: Black

CODICE P/N	DIMENSIONI SIZES			PANNELLO PANEL	NOTE NOTES	CONF. PKG.
	A	D	L			
9220 EA01	13,0	4,0	6,0	Ø 4,0		1.000
9221 EA01	8,0	5,0	6,0	Ø 5,0		1.000
9222 EA01	11,0	5,0	6,0	Ø 5,0		1.000
9223 EA01	13,0	5,0	6,0	Ø 5,0		1.000
9224 EA01	13,0	6,0	6,0	Ø 6,0		1.000
9225 EA01	13,0	7,0	6,0	Ø 7,0		1.000
9226 EA01	13,0	8,0	6,0	Ø 8,0		1.000
9227 EA01	15,0	8,0	6,0	Ø 8,0		1.000
9228 EA01	13,0	9,0	6,0	Ø 9,0		1.000
9229 EA01	15,0	9,0	6,0	Ø 9,0		1.000
9230 EA01	13,0	10,0	6,0	Ø 10,0		1.000
9231 EA01	15,0	10,0	6,0	Ø 10,0		1.000
9232 EA01	13,0	11,0	6,0	Ø 11,0		1.000
9233 EA01	15,0	11,0	6,0	Ø 11,0		1.000
9234 EA01	19,0	12,0	8,0	Ø 12,0		1.000
9235 EA01	19,0	13,0	8,0	Ø 13,0		1.000
9236 EA01	19,0	15,0	8,0	Ø 15,0		1.000
9237 EA01	24,0	17,0	6,0	Ø 17,0		1.000

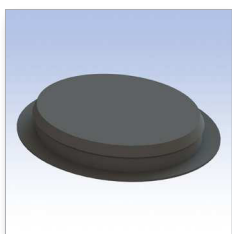
Tipo 1 Type 1



Tipo 2 Type 2



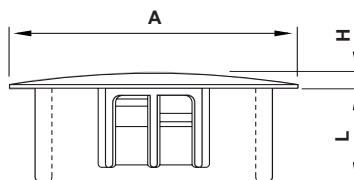
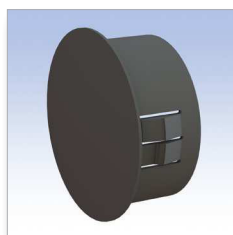
Tipo 3 Type 3



■ Materiale: PA 6.6 - PELD / Material: PA 6.6 - PELD
 ■ Colore: Naturale o nero / Colour: Natural or black

■ Tutte le quote sono in mm. / All dimensions are in mm.

CODICE P/N	TIPO TYPE	DIMENSIONI SIZES			PANNELLO PANEL		NOTE NOTES	CONF. PKG.
		A	H	L	foro/hole	Sp./Th.		
0238 EA01	1	23	3	4,5	Ø 16,5	0,5 - 2		2.500
5566 EA01	1	15	2,0	4,5	Ø 10,0	0,5 - 1,2		2.500
0240 EA01	2	30	1,2	4	Ø 22	0,5 - 1		2.500
2776 AA01	2	45	4	4	Ø 32	0,5 - 2,5		2.500
0250 EA01	3	37X46	1,8	6,5	☒ 30x40	0,5 - 2,0		2.500



■ Materiale: PA 6.6 / Material: PA 6.6

■ Autoestinguenza: V2 (UL94) / UL Flammability: V2 (UL94)

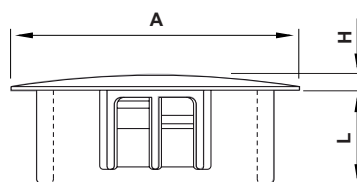
■ Colore: Nero / Colour: Black

■ Msp = Max. spessore del pannello / Max. panel thickness.

■ Tutte le quote sono in mm. / All dimensions are in mm.

Il particolare può presentarsi con uno o due dentini di bloccaggio per lato. / Parts may appear with one or two locking mechanisms per side.

CODICE P/N	DIMENSIONI SIZES			PANNELLO PANEL		NOTE NOTES	CONF. PKG.
	A	H	L	foro/hole	Msp		
5773 AA01	11,9	1,6	8,7	Ø 9,5	3,2		pz. / pcs. 1.000
5774 AA01	13,5	1,6	8,7	Ø 11,1	3,2		1.000
5775 AA01	14,7	1,6	8,7	Ø 12,7	3,2		1.000
5776 AA01	16,7	1,6	8,7	Ø 14,3	3,2		1.000
5777 AA01	18,2	1,6	8,7	Ø 15,9	3,2		1.000
5778 AA01	19,8	1,6	8,7	Ø 17,4	3,2		500
5779 AA01	23,4	1,6	8,7	Ø 19,1	3,2		500
5780 AA01	22,6	1,6	8,7	Ø 20,6	3,2		500
5781 AA01	25,8	1,6	9,9	Ø 22,2	3,2		500
5782 AA01	30,6	1,6	9,9	Ø 25,4	3,2		500
5783 AA01	30,9	1,6	9,9	Ø 27,8-28,6	3,2		500
5784 AA01	33,3	1,6	9,9	Ø 30,1	3,2		500
5785 AA01	34,9	1,6	9,9	Ø 31,8	3,2		500
5786 AA01	38,1	1,6	9,9	Ø 34,9	3,2		500
5787 AA01	42,4	1,6	9,9	Ø 38,1	3,2		500
5788 AA01	48,4	1,6	9,9	Ø 44,5	3,2		500
5789 AA01	54,4	2	9,9	Ø 50,8	3,2		500
5790 AA01	59,5	2,8	16,3	Ø 53,2-54	6,4		1.000
5791 AA01	61,5	2,8	16,3	Ø 57,2	6,4		500
5792 AA01	69	2,8	16,3	Ø 63,5	6,4		500
5793 AA01	80,5	2,8	16,3	Ø 76,2	6,4		500
5794 AA01	92,9	2,8	16,3	Ø 85,7	6,4		500
5795 AA01	92,9	2,8	16,3	Ø 88,9	6,4		500
5796 AA01	105,6	2,8	16,3	101,6	6,4		500



■ Materiale: PA 6.6 / Material: PA 6.6
 ■ Autoestinguenza: V2 (UL94) / UL Flammability: V2 (UL94)

■ Colore: Nero / Colour: Black
 ■ Tutte le quote sono in mm. / All dimensions are in mm.

Il particolare può presentarsi con uno o due dentini di bloccaggio per lato. / Parts may appear with one or two locking mechanisms per side.

CODICE P/N	DIMENSIONI SIZES			PANNELLO PANEL		NOTE NOTES	CONF. PKG.
	A	H	L	foro/hole	Sp./Th.		
6727 AA01	6,35	1	5,5	Ø 4,8	max 1,6		1.000
6728 AA01	7,6	1,1	5,6	Ø 6,4	max 1,6		1.000
6894 AA01	10,9	1,4	5,6	Ø 7,0	0,8 - 1,8		1.000
6738 AA01	9,5	1,2	7,6	Ø 8,0	max 1,6		1.000
6757 AA01	11,5	1,5	10,1	Ø 9,0	max 3,3		1.000
6739 AA01	13,0	1,4	5,5	Ø 9,5	max 1,4		1.000
6729 AA01	11,9	1,5	10,1	Ø 9,5	max 3,3		1.000
6730 AA01	14,0	1,1	10,1	Ø 11,0	max 3,3		1.000
6758 AA01	14,3	1,1	10,1	Ø 12,0	max 3,3		1.000
6731 AA01	14,6	1,1	10,1	Ø 12,7	max 3,3		1.000
6740 AA01	15,2	1,2	6,2	Ø 13,5	max 2,2		1.000
6895 AA01	16,3	1,2	8,9	Ø 14,0	max 3,3		1.000
6741 AA01	20,0	1,2	7,7	Ø 15,9	max 2,0		1.000
6732 AA01	18,7	1,3	10,6	Ø 16,0	max 3,3		1.000
6896 AA01	19,3	1,2	8,9	Ø 17,0	max 3,3		1.000
6733 AA01	23,2	1,6	10,3	Ø 19,0	max 3,3		1.000
6897 AA01	24,0	1,6	9,0	Ø 20,0	max 3,3		1.000
6734 AA01	25,4	1,1	11,0	Ø 22,2	max 3,3		1.000
6735 AA01	28,4	1,4	11,0	Ø 25,4	max 3,3		1.000
6736 AA01	32,0	1,1	13,1	Ø 28,0	max 3,3		1.000
6737 AA01	34,2	1,3	11,3	Ø 30,0	max 3,3		1.000
6898 AA01	36,0	2,0	10,0	Ø 32,0	max 3,3		1.000