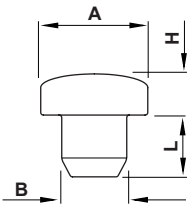
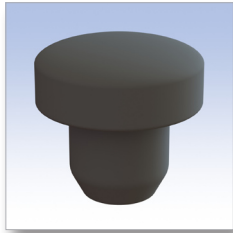
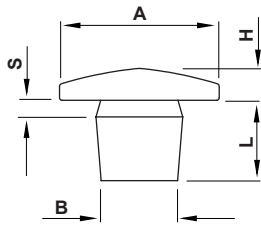


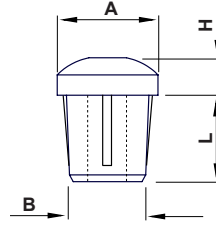
Tipo 1 Type 1



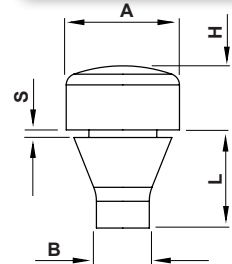
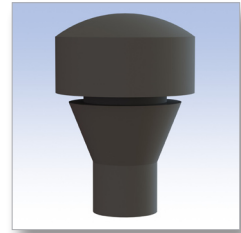
Tipo 2 Type 2



Tipo 3 Type 3



Tipo 4 Type 4



QUESTA LINEA DI PIEDINI E PARACOLPI PUO' ESSERE PRODOTTA SU RICHIESTA IN GOMMA TERMOPLASTICA DI ALTA QUALITA' CON RESISTENZA ALLA TEMPERATURA DI 130°C MAX. E CON DIVERSE POSSIBILITA' DI DUREZZA E COLORE. PER MAGGIORI INFORMAZIONI VI INVITIAMO A CONTATTARE IL NOSTRO SERVIZIO VENDITE.

THIS LINE OF FEET AND PUSH-IN BUMPERS CAN BE PRODUCED ON REQUEST IN HIGH-GRADE THERMOPLASTIC RUBBER WITH A TEMPERATURE RESISTANCE OF 130°C MAX. AND WITH DIFFERENT HARDNESS AND COLOUR POSSIBILITIES. FOR MORE INFORMATION, KINDLY CONTACT OUR CUSTOMER SERVICE.

■ **Materiale: Vedi tabella / See table**

■ **Tutte le quote sono in mm. / All dimensions are in mm.**

CODICE P/N	TIPO TYPE	DIMENSIONI SIZES					MATERIALE MATERIAL	CONF. PKG.
		A	B	H	L	S		
4400 PF01	1	8	4,5	2	5		TPE	5.000
4401 PF01	1	8	4,5	3	5		TPE	5.000
4402 PF01	1	8	4,5	4	5		TPE	5.000
4403 PF01	1	8	4,5	5	5		TPE	5.000
4404 PF01	1	8	4,5	6	5		TPE	5.000
5214 PS01	2	12	6	2,8	6	1	TPE	2.500
4808 PS01	2	13,5	6	2,8	6	1	TPE	2.500
0445 CA01	2	12	6	2	6	1	Solo in materiale PVC morbido / Soft PVC material only	2.500
0446 CA01	2	12	6	4,5	6	1	Solo in materiale PVC morbido / Soft PVC material only	2.500
5324 PF01	3	14,8	12,5	6	12		TPE	2.500
6565 PS01	4	15,0	7,0	8,5	13,0	1	NEOPRENE	1.000