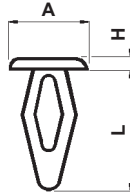
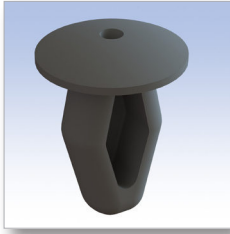
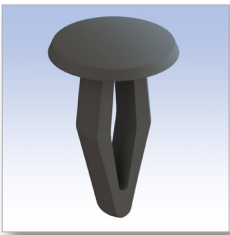


Tipo 1 (chiuso) Type 1 (closed)



Tipo 2 (aperto) Type 2 (open)

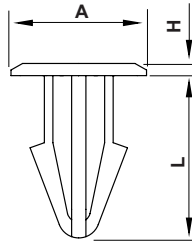
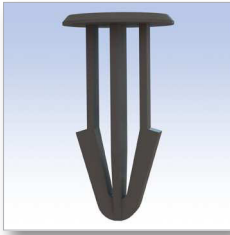


- Materiale: PA 6.6 / Material: PA 6.6
- Autoestinguenza: V2 (UL94) / UL Flammability: V2 (UL94)
- Colore: Naturale o nero / Colour: Natural or black

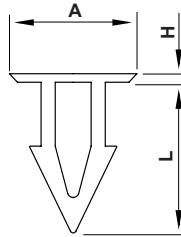
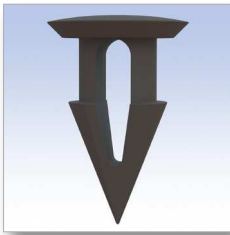
■ Tutte le quote sono in mm. / All dimensions are in mm.

CODICE P/N	TIPO TYPE	DIMENSIONI SIZES			PANNELLO PANEL		NOTE NOTES	CONF. PKG.
		A	H	L	foro/hole	Sp./Th.		
5659 AA00	1	6,9	1	8,4	Ø 3,2	2,0 - 2,5		2.000
0096 AA00	1	6,5	1	12	Ø 3,5	1 - 3		5.000
0277 AA00	1	7,5	2	13,5	Ø 3,5	2,5 - 6,5		2.500
0278 AA00	1	9,5	1,5	11	Ø 5	1,5 - 3,5		2.500
2332 AA00	1	13	1,5	16	Ø 6,5	0,8 - 6		2.500
0281 AA00	1	9,5	1,5	11	Ø 7	1,5 - 2		2.500
0293 AA00	2	6	1,2	10	Ø 3	0,5 - 3,5		2.500
5394 AA00	2	6,5	1,2	10	Ø 3 - 3,5	0,5 - 3,5		5.000
5452 AA00	2	7,3	1,7	10,2	Ø 3,2-3,5	1,0 - 2,5		2.500
6726 GA00	2	9	1,6	14	Ø 3,9	1,0 - 5,0	Materiale / Material: POM	1.000

Tipo 1 Type 1



Tipo 2 Type 2



- Materiale: PA 6.6 / Material: PA 6.6
- Autoestinguenza: V2 (UL94) / UL Flammability: V2 (UL94)
- Colore: Naturale o nero / Colour: Natural or black

■ Tutte le quote sono in mm. / All dimensions are in mm.

CODICE P/N	TIPO TYPE	DIMENSIONI SIZES			PANNELLO PANEL		NOTE NOTES	CONF. PKG.
		A	H	L	foro/hole	Sp./Th.		
1096 AA01	1	12	1,5	19,5	Ø 6,5	11		2.500
5323 AA00	2	8	1	9	Ø 4,5	3		2.500
4810 AA01	2	10	1,5	13,5	Ø 4,5	4,5		2.500