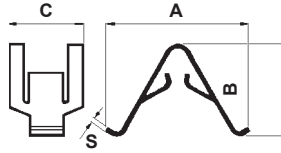
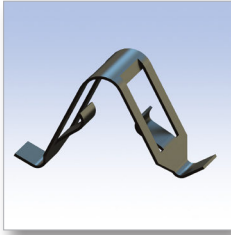
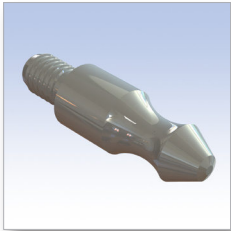


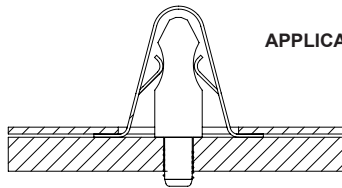
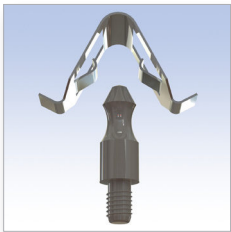
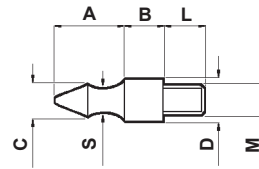
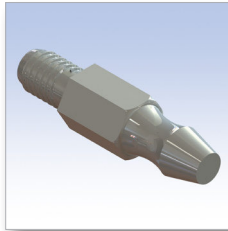
Tipo 1F Type 1F



Tipo 1MA Type 1MA



Tipo 1MB Type 1MB



### APPLICAZIONE / APPLICATION

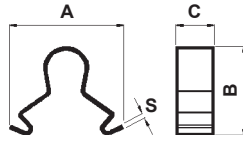
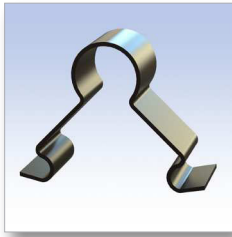
Dima suggerita: 8 x 13 mm. Spessore: 0,8 - 1,2 mm.  
 Per una maggiore tenuta si suggerisce un dimensionamento leggermente inferiore.  
 Suggested template 8 x 13 mm. Thickness: 0,8 - 1,2 mm.  
 Please slightly reduce the template for higher load.

■ Materiale: Vedi tabella / See table

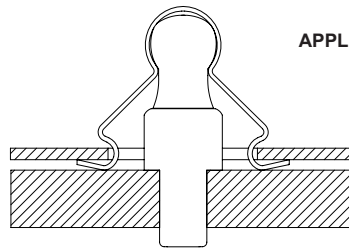
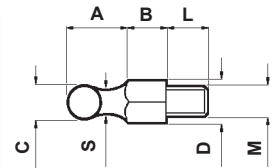
■ Tutte le quote sono in mm. / All dimensions are in mm.

CODICE P/N	TIPO TYPE	DIMENSIONI SIZES							MATERIALE MATERIAL	CONF. PKG.
		A	B	C	D	L	M	S		
0970 MC90	1F	28,3	14,5	16				0,35	Acciaio temprato / Hardened Steel	2.500
0972 MC90	1F	28,3	14,5	16				0,55	Acciaio temprato / Hardened Steel	2.500
2930 MF94	1MA	10,7	6,7	7,1	7	7,2	M5	4,6	Ferro zincato / Zinc plated iron	2.500
2935 MF94	1MB	9	8,4	5,5	6	6,9	M4	4,6	Ferro zincato / Zinc plated iron	2.500

Tipo 1F Type 1F



Tipo 1M Type 1M



### APPLICAZIONE / APPLICATION

**Dima suggerita: 8 x 11 mm. Spessore: 1 - 1,2 mm.**  
**Per una maggiore tenuta si suggerisce un dimensionamento leggermente inferiore.**  
*Suggested template 8 x 11 mm. Thickness: 1 - 1,2 mm.*  
*Please slightly reduce the template for higher load.*

■ Materiale: Vedi tabella / See table

■ Tutte le quote sono in mm. / All dimensions are in mm.

CODICE P/N	TIPO TYPE	DIMENSIONI SIZES							MATERIALE MATERIAL	CONF. PKG.
		A	B	C	D	L	M	S		
4486 MC90	1F	16,5	14,0	6,0				0,4	Acciaio brunito / Burnished Steel	2.500
4474 MC90	1F	18,0	14,0	6,0				0,4	Acciaio inox / Inox Steel	2.500
4488 MF94	1M	8	4,8	5,6	6	7,2	M4	4,5	Ferro zincato / Zinc plated iron	2.500