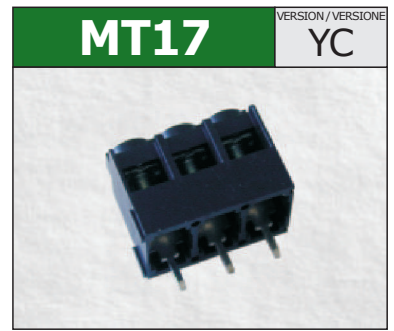
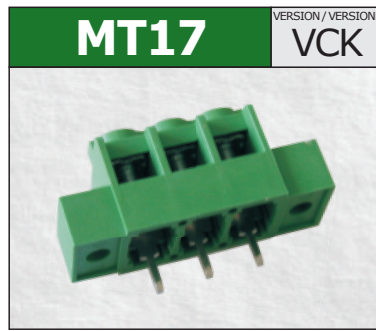
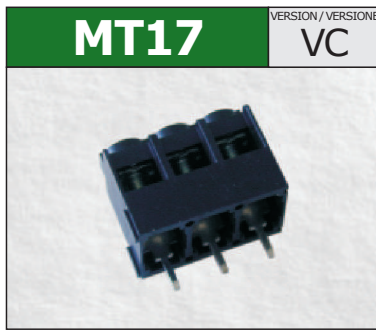
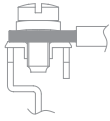




**SINGLE DECK
TERMINAL BLOCKS**
Clamping under head



TECHNICAL DATA	① PITCH	mm
	② POLES	
	CURRENT	
	VOLTAGE	
	TEST VOLTAGE	
	RECOMMENDED TORQUE	
	WIRE STRIPPING	
	MAX WIRES SECTION	
	OPERATING TEMP.	

7,5 (15)			
2÷3 (1÷2)		Modular Modulare	
24A			
450V (750V)			
2,5 kVrms/60s (3 kVrms/60s)			
0.5÷0.55Nm / 4.5÷4.9in.lbs.			
max 9mm			
2x2.5mm² 2x14AWG	Stranded Flessibile	2x2.5mm² 2x14AWG	Solid Rigido
-40°C ÷ +130°C			

7,5 (15)			
2÷3 (1÷2)		With flange Con flangia	
24A			
450V (750V)			
2,5 kVrms/60s (3 kVrms/60s)			
0.5÷0.55Nm / 4.5÷4.9in.lbs.			
max 9mm			
2x2.5mm² 2x14AWG	Stranded Flessibile	2x2.5mm² 2x14AWG	Solid Rigido
-40°C ÷ +130°C			

7,5 (15)			
2÷3 (1÷2)		Modular Modulare	
24A			
450V (750V)			
2,5 kVrms/60s (3 kVrms/60s)			
0.5÷0.55Nm / 4.5÷4.9in.lbs.			
max 9mm			
2x2.5mm² 2x14AWG	Stranded Flessibile	2x2.5mm² 2x14AWG	Solid Rigido
-40°C ÷ +130°C			

APPROVAL DATA	APPROVALS			
	CURRENT	-	-	20A factory 15A field
	VOLTAGE	-	-	300V (600V)
	WIRE SECTION	-	-	30÷14AWG
	TORQUE	-	-	4.5Lb-in
	FILE	-	-	E178356

EN60998	EN60998	UL1059 C22-2 N°158
-	-	20A factory 15A field
-	-	300V (600V)
-	-	30÷14AWG
-	-	4.5Lb-in
-	-	E178356

EN60998	EN60998	UL1059 C22-2 N°158
-	-	20A factory 15A field
-	-	300V (600V)
-	-	30÷14AWG
-	-	4.5Lb-in
-	-	E178356

EN60998	EN60998	UL1059 C22-2 N°158
-	-	20A factory 15A field
-	-	300V (600V)
-	-	30÷14AWG
-	-	4.5Lb-in
-	-	E178356

MATERIALS	HOUSING	PA - UL 94 V0		
	SCREW	M3	Captive Imperdibile	Galvanized steel Acciaio zincato
	WASHER	Galvanized iron / Ferro zincato		
	TERMINAL	Tin-plated copper alloy / Lega di rame stagnata		

PA - UL 94 V0				
M3	Captive Imperdibile	Galvanized steel Acciaio zincato		
Galvanized iron / Ferro zincato				
Tin-plated copper alloy / Lega di rame stagnata				

PA - UL 94 V0				
M3	Captive Imperdibile	Galvanized steel Acciaio zincato		
Galvanized iron / Ferro zincato				
Tin-plated copper alloy / Lega di rame stagnata				

PA - UL 94 V0				
M3	Captive Imperdibile	Galvanized steel Acciaio zincato		
Galvanized iron / Ferro zincato				
Tin-plated copper alloy / Lega di rame stagnata				

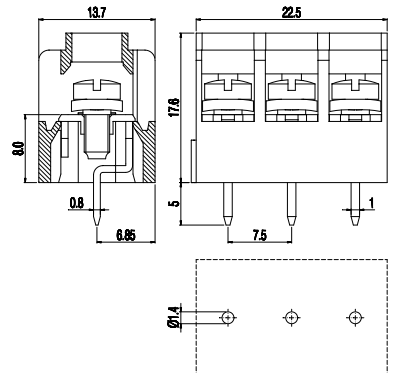
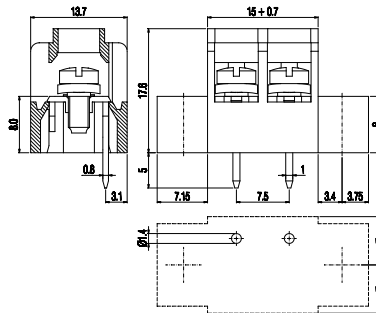
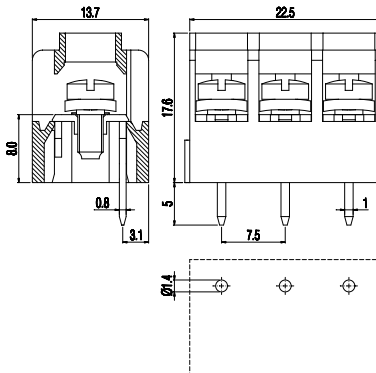
HOW TO ORDER
* Custom code (assigned by euroclamp)
COLOURS
To be specified just in case it is different from the standard

Series Serie	Poles Poli	Pitch Passo	Version Versione (*)	Colour Colore
MT17	2÷N	7,5	VC	- * - #
MT17	1÷N	15	VC	- * - #
Standard	On request / Su richiesta			
BK	GN	GY	BL	RD YL OG

Series Serie	Poles Poli	Pitch Passo	Version Versione (*)	Colour Colore
MT17	2÷N	7,5	VCK	- * - #
MT17	1÷N	15	VCK	- * - #
Standard	On request / Su richiesta			
BK	GN	GY	BL	RD YL OG

Series Serie	Poles Poli	Pitch Passo	Version Versione (*)	Colour Colore
MT17	2÷N	7,5	YC	- * - #
MT17	1÷N	15	YC	- * - #
Standard	On request / Su richiesta			
BK	GN	GY	BL	RD YL OG

NOTE
① Products of pitches 15 are configurations with metal parts removed from alternating poles to increase spacings;
② Configurations of higher number of poles are obtainable composing modular versions. In order to avoid interference mounting, the terminal row should be interrupted when the number of positions exceeds 30.



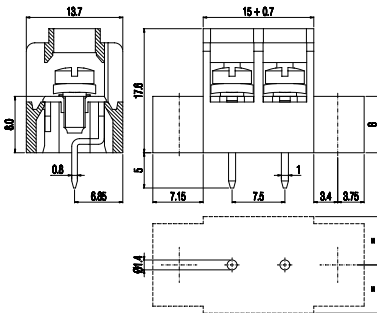


7,5 (15)	
2÷3 (1÷2)	With flange Con flangia
24A	
450V (750V)	
2,5 kVrms/60s (3 kVrms/60s)	
0.5÷0.55Nm / 4.5÷4.9in.lbs.	
max 9mm	
2x2.5mm² 2x14AWG	Stranded Flessibile
2x2.5mm² 2x14AWG	Solid Rigido
-40°C ÷ +130°C	

EN60998	EN60998	UL1059 C22-2 N°158
-	-	20A factory 15A field
-	-	300V (600V)
-	-	30÷14AWG
-	-	4.5Lb-in
-	-	E178356

PA - UL 94 V0	
M3	Galvanized steel Acciaio zincato
Galvanized iron / Ferro zincato	
Tin-plated copper alloy / Lega di rame stagnata	

Series Serie	Poles Poli	Pitch Passo	Version Versione	(*)	Colour Colore
MT17	2÷N	7,5	YCK	*	#
MT17	1÷N	15	YCK	*	#
Standard	On request / Su richiesta				
BK	GN	GY	BL	RD	YL OG

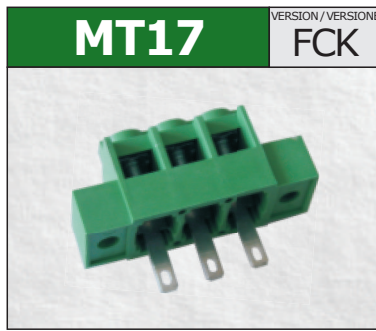
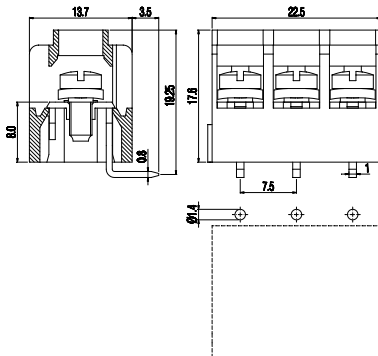


7,5 (15)	
2÷3 (1÷2)	Modular Modulare
24A	
450V (750V)	
2,5 kVrms/60s (3 kVrms/60s)	
0.5÷0.55Nm / 4.5÷4.9in.lbs.	
max 9mm	
2x2.5mm² 2x14AWG	Stranded Flessibile
2x2.5mm² 2x14AWG	Solid Rigido
-40°C ÷ +130°C	

EN60998	EN60998	UL1059 C22-2 N°158
-	-	20A factory 15A field
-	-	300V (600V)
-	-	30÷14AWG
-	-	4.5Lb-in
-	-	E178356

PA - UL 94 V0	
M3	Galvanized steel Acciaio zincato
Galvanized iron / Ferro zincato	
Tin-plated copper alloy / Lega di rame stagnata	

Series Serie	Poles Poli	Pitch Passo	Version Versione	(*)	Colour Colore
MT17	2÷N	7,5	HC	*	#
MT17	1÷N	15	HC	*	#
Standard	On request / Su richiesta				
BK	GN	GY	BL	RD	YL OG

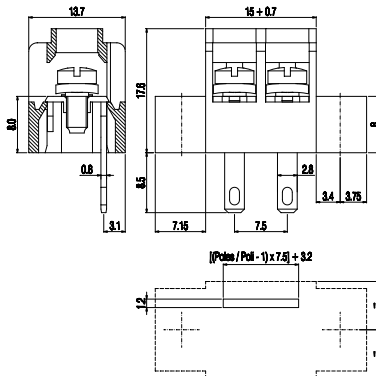


7,5 (15)	
2÷3 (1÷2)	With flange Con flangia
24A	
450V (750V)	
2,5 kVrms/60s (3 kVrms/60s)	
0.5÷0.55Nm / 4.5÷4.9in.lbs.	
max 9mm	
2x2.5mm² 2x14AWG	Stranded Flessibile
2x2.5mm² 2x14AWG	Solid Rigido
-40°C ÷ +130°C	

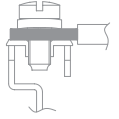
EN60998	EN60998	UL1059 C22-2 N°158
-	-	20A factory 15A field
-	-	300V (600V)
-	-	14÷30AWG
-	-	4.5Lb-in
-	-	E178356

PA - UL 94 V0	
M3	Galvanized steel Acciaio zincato
Galvanized iron / Ferro zincato	
Tin-plated copper alloy / Lega di rame stagnata	

Series Serie	Poles Poli	Pitch Passo	Version Versione	(*)	Colour Colore
MT17	2÷N	7,5	FCK	*	#
MT17	1÷N	15	FCK	*	#
Standard	On request / Su richiesta				
BK	GN	GY	BL	RD	YL OG



**MORSETTIERE
MONOPIANO**
Serraggio sottotesta



①	PASSO	mm
②	POLI	
CORRENTE		
TENSIONE		
TENSIONE DI PROVA		
COPPIA CONSIGLIATA		
SPELLATURA CAVO		
CAVI CONNETTIBILI		
TEMP. DI ESERCIZIO		

OMOLOGAZIONI	
CORRENTE	
TENSIONE	
SEZIONE CONDUTTORE	
COPPIA	
FILE	

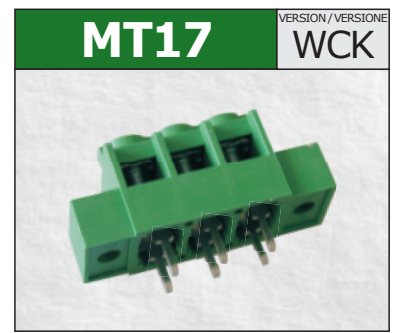
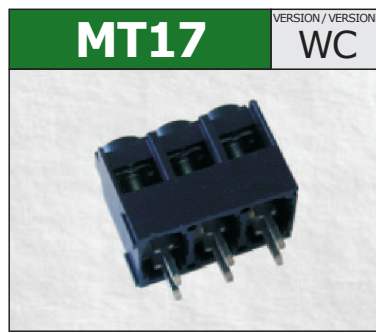
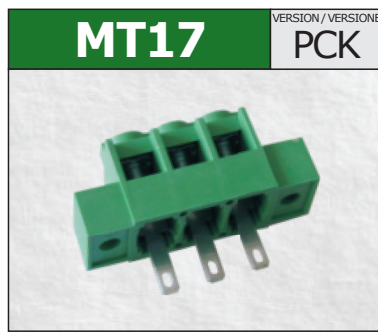
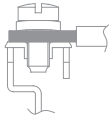
CORPO ISOLANTE	
VITE	
RONDELLA	
TERMINALE	

COME ORDINARE	
* Codice personalizzazione (definito da euroclamp)	
COLORI	
# Specificare solo se diverso dallo standard	

NOTE	
① I prodotti a passo 15 sono configurazioni con componenti metallici rimossi da poli alterni per aumentarne le distanze;	
② Configurazioni con un numero maggiore di poli sono ottenibili componendo le versioni modulari. Per evitare interferenze di montaggio occorre prevedere un'interruzione della morsetteria quando il numero dei poli è superiore a 30.	



**SINGLE DECK
TERMINAL BLOCKS**
Clamping under head



TECHNICAL DATA	① PITCH	mm
	② POLES	
	CURRENT	
	VOLTAGE	
	TEST VOLTAGE	
	RECOMMENDED TORQUE	
	WIRE STRIPPING	
	MAX WIRES SECTION	
	OPERATING TEMP.	

7,5 (15)			
2÷3 (1÷2)		With flange Con flangia	
24A			
450V (750V)			
2,5 kVrms/60s (3 kVrms/60s)			
0.5÷0.55Nm / 4.5÷4.9in.lbs.			
max 9mm			
2x2.5mm² 2x14AWG	Stranded Flessibile	2x2.5mm² 2x14AWG	Solid Rigido
-40°C ÷ +130°C			

7,5 (15)			
2÷3 (1÷2)		Modular Modulare	
24A			
450V (750V)			
2,5 kVrms/60s (3 kVrms/60s)			
0.5÷0.55Nm / 4.5÷4.9in.lbs.			
max 9mm			
2x2.5mm² 2x14AWG	Stranded Flessibile	2x2.5mm² 2x14AWG	Solid Rigido
-40°C ÷ +130°C			

7,5 (15)			
2÷3 (1÷2)		With flange Con flangia	
24A			
450V (750V)			
2,5 kVrms/60s (3 kVrms/60s)			
0.5÷0.55Nm / 4.5÷4.9in.lbs.			
max 9mm			
2x2.5mm² 2x14AWG	Stranded Flessibile	2x2.5mm² 2x14AWG	Solid Rigido
-40°C ÷ +130°C			

APPROVAL DATA	APPROVALS			
	CURRENT	-	-	20A factory 15A field
	VOLTAGE	-	-	300V (600V)
	WIRE SECTION	-	-	14÷30AWG
	TORQUE	-	-	4.5Lb-in
	FILE	-	-	E178356

EN60998	EN60998	UL1059 C22-2 N°158
-	-	20A factory 15A field
-	-	300V (600V)
-	-	14÷30AWG
-	-	4.5Lb-in
-	-	E178356

EN60998	EN60998	UL1059 C22-2 N°158
-	-	20A factory 15A field
-	-	300V (600V)
-	-	14÷30AWG
-	-	4.5Lb-in
-	-	E178356

EN60998	EN60998	UL1059 C22-2 N°158
-	-	20A factory 15A field
-	-	300V (600V)
-	-	14÷30AWG
-	-	4.5Lb-in
-	-	E178356

MATERIALS	HOUSING	PA - UL 94 V0		
	SCREW	M3	Captive Imperdibile	Galvanized steel Acciaio zincato
	WASHER	Galvanized iron / Ferro zincato		
	TERMINAL	Tin-plated copper alloy / Lega di rame stagnata		

HOUSING	PA - UL 94 V0		
SCREW	M3	Captive Imperdibile	Galvanized steel Acciaio zincato
WASHER	Galvanized iron / Ferro zincato		
TERMINAL	Tin-plated copper alloy / Lega di rame stagnata		

HOUSING	PA - UL 94 V0		
SCREW	M3	Captive Imperdibile	Galvanized steel Acciaio zincato
WASHER	Galvanized iron / Ferro zincato		
TERMINAL	Tin-plated copper alloy / Lega di rame stagnata		

HOUSING	PA - UL 94 V0		
SCREW	M3	Captive Imperdibile	Galvanized steel Acciaio zincato
WASHER	Galvanized iron / Ferro zincato		
TERMINAL	Tin-plated copper alloy / Lega di rame stagnata		

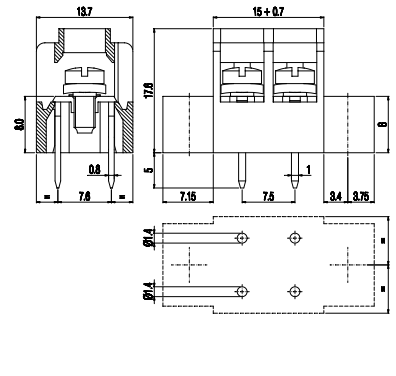
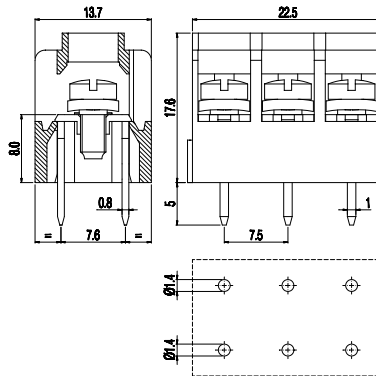
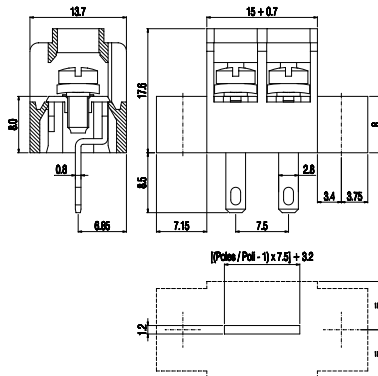
HOW TO ORDER	Series Serie	Poles Poli	Pitch Passo	Version Versione (*)	Colour Colore
* Custom code (assigned by euroclamp)	MT17	2÷N	- 7,5	- PCK	- * - #
COLOURS	Standard	On request / Su richiesta			
# To be specified just in case it is different from the standard	BK	GN	GY	BL	RD YL OG

Series Serie	Poles Poli	Pitch Passo	Version Versione (*)	Colour Colore
MT17	2÷N	- 7,5	- WC	- * - #
MT17	1÷N	- 15	- WC	- * - #
Standard	On request / Su richiesta			
BK	GN	GY	BL	RD YL OG

Series Serie	Poles Poli	Pitch Passo	Version Versione (*)	Colour Colore
MT17	2÷N	- 7,5	- WCK	- * - #
MT17	1÷N	- 15	- WCK	- * - #
Standard	On request / Su richiesta			
BK	GN	GY	BL	RD YL OG

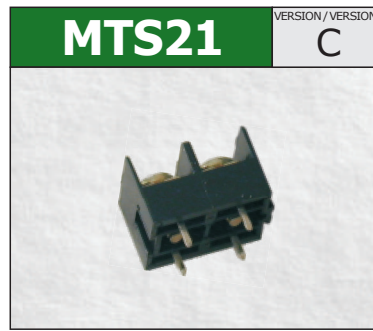
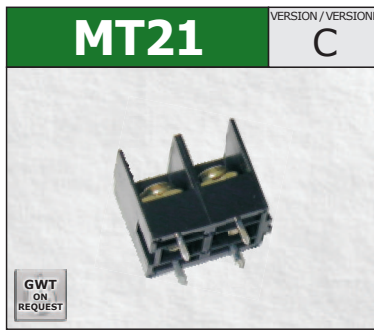
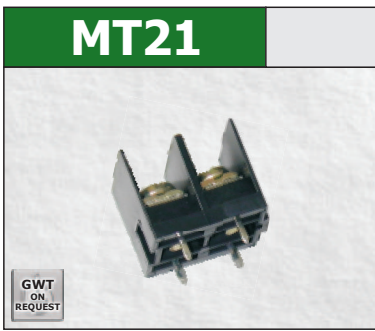
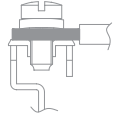
Series Serie	Poles Poli	Pitch Passo	Version Versione (*)	Colour Colore
MT17	2÷N	- 7,5	- WCK	- * - #
MT17	1÷N	- 15	- WCK	- * - #
Standard	On request / Su richiesta			
BK	GN	GY	BL	RD YL OG

NOTE
① Products of pitches 15 / 20 are configurations with metal parts removed from alternating poles to increase spacings;
② Configurations of higher number of poles are obtainable composing modular versions. In order to avoid interference mounting, the terminal row should be interrupted when the number of positions exceeds 30.





**MORSETTIERE
MONOPIANO**
Serraggio sottotesta



10 (20)	
2÷3 (1÷2)	Modular Modulare
25A	
750V	
3 kVrms/60s	
0.8÷0.88Nm / 7.2÷7.9in.lbs.	
max 11mm	
2x2.5mm² 2x14AWG	Stranded Flessibile
2x4.0mm² 2x12AWG	Solid Rigido
-40°C ÷ +130°C	

10 (20)	
2÷3 (1÷2)	Modular Modulare
25A	
750V	
3 kVrms/60s	
0.8÷0.88Nm / 7.2÷7.9in.lbs.	
max 11mm	
2x2.5mm² 2x14AWG	Stranded Flessibile
2x4.0mm² 2x12AWG	Solid Rigido
-40°C ÷ +130°C	

10 (20)	
2÷3 (1÷2)	Modular Modulare
25A	
250V (750V)	
2 kVrms/60s (3 kVrms/60s)	
0.8÷0.88Nm / 7.2÷7.9in.lbs.	
max 11mm	
2x2.5mm² 2x14AWG	Stranded Flessibile
2x4.0mm² 2x12AWG	Solid Rigido
-40°C ÷ +130°C	

①	PASSO	mm
②	POLI	
CORRENTE		
TENSIONE		
TENSIONE DI PROVA		
COPPIA CONSIGLIATA		
SPELLATURA CAVO		
CAVI CONNETTIBILI		
TEMP. DI ESERCIZIO		

EN60998	EN60998	UL1059 C22-2 N°158
25A	25A	25A factory 20A field
750V	750V	300V (600V)
2x2.5mm ²	2x2.5mm ²	12÷26AWG
0.8Nm	0.8Nm	7.2Lb-in
EQ203	N.40019721	E178356

EN60998	EN60998	UL1059 C22-2 N°158
25A	25A	25A factory 20A field
750V	750V	300V (600V)
2x2.5mm ²	2x2.5mm ²	12÷26AWG
0.8Nm	0.8Nm	7.2Lb-in
EQ203	N.40019721	E178356

EN60998	EN60998	UL1059 C22-2 N°158
-	-	PENDING / IN CORSO
-	-	
-	-	
-	-	
-	-	

OMOLOGAZIONI	
CORRENTE	
TENSIONE	
SEZIONE CONDUTTORE	
COPPIA	
FILE	

PA - UL 94 V0	
M3.5	Galvanized steel Acciaio zincato
Galvanized iron / Ferro zincato	
Tin-plated copper alloy / Lega di rame stagnata	

PA - UL 94 V0	
M3.5	Galvanized steel Acciaio zincato
Galvanized iron / Ferro zincato	
Tin-plated copper alloy / Lega di rame stagnata	

PA - UL 94 V0	
M3.5	Galvanized steel Acciaio zincato
Galvanized iron / Ferro zincato	
Tin-plated copper alloy / Lega di rame stagnata	

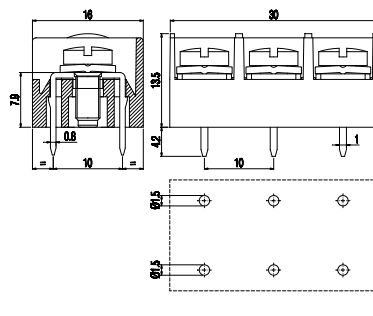
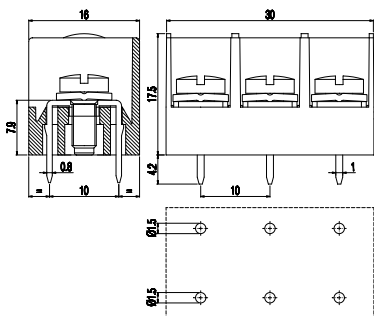
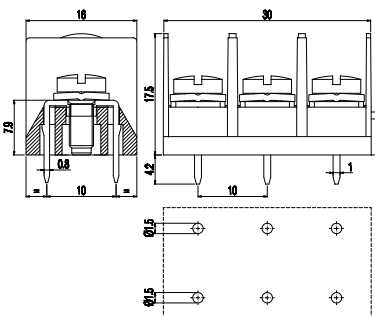
CORPO ISOLANTE	
VITE	
RONDELLA	
TERMINALE	

Series Serie	Poles Poli	Pitch Passo	(*)	Colour Colore
MT21	2÷N	10	*	#
MT21	1÷N	20	*	#
Standard	On request / Su richiesta			
BK	GN	GY	BL	RD YL OG

Series Serie	Poles Poli	Pitch Passo	Version Versione	(*)	Colour Colore
MT21	2÷N	10	C	*	#
MT21	1÷N	20	C	*	#
Standard	On request / Su richiesta				
BK	GN	GY	BL	RD YL OG	

Series Serie	Poles Poli	Pitch Passo	Version Versione	(*)	Colour Colore
MTS21	2÷N	10	C	*	#
MST21	1÷N	20	C	*	#
Standard	On request / Su richiesta				
BK	GN	GY	BL	RD YL OG	

COME ORDINARE	
* Codice personalizzazione (definito da euroclamp)	
COLORI	
# Specificare solo se diverso dallo standard	



NOTE	
① I prodotti a passo 15 / 20 sono configurazioni con componenti metallici rimossi da poli alterni per aumentarne le distanze;	
② Configurazioni con un numero maggiore di poli sono ottenibili componendo le versioni modulari. Per evitare interferenze di montaggio occorre prevedere un'interruzione della morsetteria quando il numero dei poli è superiore a 30.	