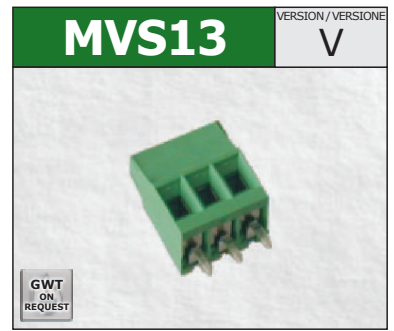
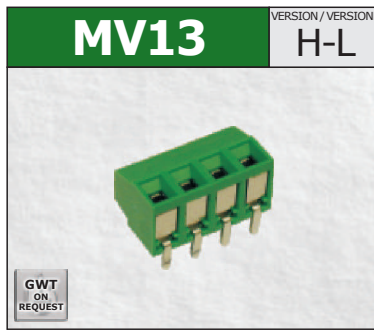
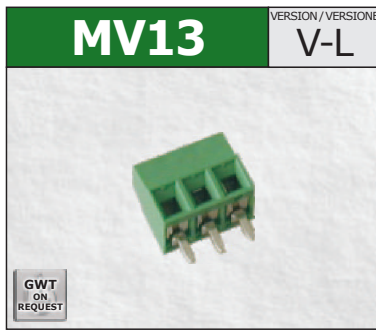
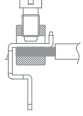




**SINGLE DECK
TERMINAL BLOCKS**
Rising clamp



TECHNICAL DATA	① PITCH	mm
	② POLES	
	CURRENT	
	VOLTAGE	
	TEST VOLTAGE	
	RECOMMENDED TORQUE	
	WIRE STRIPPING	
	MAX WIRES SECTION	
	OPERATING TEMP.	

3,5 / 3,81 (7 / 7,62)		
2÷12 (2÷6)	Stackable Liscio	
13,5A		
130V (450V)		
1,25 kVrms/60s (2,5 kVrms/60s)		
0.2÷0.22Nm / 1.8÷1.9in.lbs.		
max 6mm		
1.0mm² 16AWG Stranded Flessibile	1.5mm² 16AWG Solid Rigido	2x0.75mm² 2x18AWG Solid Rigido
-40°C ÷ +130°C		

3,5 / 3,81 (7 / 7,62)		
2÷12 (2÷6)	Stackable Liscio	
13,5A		
130V (450V)		
1,25 kVrms/60s (2,5 kVrms/60s)		
0.2÷0.22Nm / 1.8÷1.9in.lbs.		
max 6mm		
1.0mm² 16AWG Stranded Flessibile	1.5mm² 16AWG Solid Rigido	2x0.75mm² 2x18AWG Solid Rigido
-40°C ÷ +130°C		

3,5 / 3,81 (7 / 7,62)		
2÷12 (1÷6)	Modular Modulare	
13,5A		
130V (450V)		
1,25 kVrms/60s (2,5 kVrms/60s)		
0.2÷0.22Nm / 1.8÷1.9in.lbs.		
max 6mm		
1.0mm² 16AWG Stranded Flessibile	1.5mm² 16AWG Solid Rigido	2x0.75mm² 2x18AWG Solid Rigido
-40°C ÷ +130°C		

APPROVAL DATA	APPROVALS			
	CURRENT	13,5A	-	12A factory 10A field
	VOLTAGE	130V (450V)	-	150V (300V)
	WIRE SECTION	1.0mm ²	-	16÷30AWG
	TORQUE	0.2Nm	-	1.8Lb-in
	FILE	CA02.4718	-	E178356

EN60998	EN60998	UL1059 C22-2 N°158
13,5A	-	12A factory 10A field
130V (450V)	-	150V (300V)
1.0mm ²	-	16÷30AWG
0.2Nm	-	1.8Lb-in
CA02.4718	-	E178356

EN60998	EN60998	UL1059 C22-2 N°158
13,5A	-	12A factory 10A field
130V (450V)	-	150V (300V)
1.0mm ²	-	16÷30AWG
0.2Nm	-	1.8Lb-in
CA02.4718	-	E178356

EN60998	EN60998	UL1059 C22-2 N°158
13,5A	-	12A factory 10A field
130V (450V)	-	150V (300V)
1.0mm ²	-	16÷30AWG
0.2Nm	-	1.8Lb-in
CA02.4718	-	E178356

MATERIALS	HOUSING	PA - UL 94 V0		
	SCREW	M2	Galvanized steel Acciaio zincato	
	CLAMP	Tin-plated copper alloy / Lega di rame stagnata		
	TERMINAL	Tin-plated copper alloy / Lega di rame stagnata		

PA - UL 94 V0				
M2	Galvanized steel Acciaio zincato			
Tin-plated copper alloy / Lega di rame stagnata				
Tin-plated copper alloy / Lega di rame stagnata				

PA - UL 94 V0				
M2	Galvanized steel Acciaio zincato			
Tin-plated copper alloy / Lega di rame stagnata				
Tin-plated copper alloy / Lega di rame stagnata				

PA - UL 94 V0				
M2	Galvanized steel Acciaio zincato			
Tin-plated copper alloy / Lega di rame stagnata				
Tin-plated copper alloy / Lega di rame stagnata				

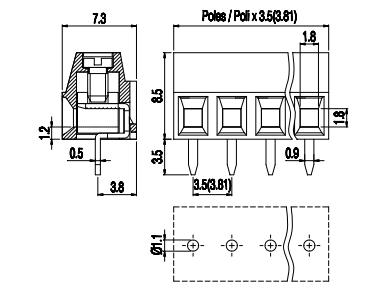
HOW TO ORDER	Series Serie	Poles Poli	Pitch Passo	Version Versione (*)	Colour Colore
	MV13	2÷12	- 3,5 / 3,81 -	V-L - * - #	- #
	MV13	2÷6	- 7 / 7,62 -	V-L - * - #	- #
* Custom code (assigned by euroclamp)					
COLOURS					
# To be specified just in case it is different from the standard					

Series Serie	Poles Poli	Pitch Passo	Version Versione (*)	Colour Colore	
MV13	2÷12	- 3,5 / 3,81 -	H-L - * - #	- #	
MV13	2÷6	- 7 / 7,62 -	H-L - * - #	- #	
Standard On request / Su richiesta					

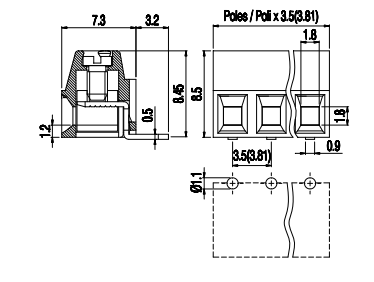
Series Serie	Poles Poli	Pitch Passo	Version Versione (*)	Colour Colore	
MV13	2÷12	- 3,5 / 3,81 -	H-L - * - #	- #	
MV13	2÷6	- 7 / 7,62 -	H-L - * - #	- #	
Standard On request / Su richiesta					

Series Serie	Poles Poli	Pitch Passo	Version Versione (*)	Colour Colore	
MVS13	2÷N	- 3,5 / 3,81 -	V - * - #	- #	
MVS13	1÷N	- 7 / 7,62 -	V - * - #	- #	
Standard On request / Su richiesta					

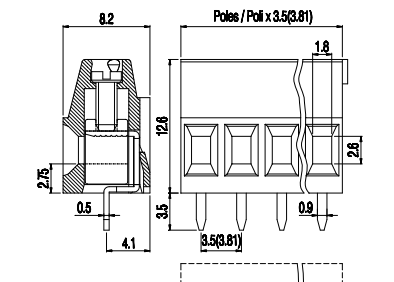
NOTE	① Products of pitches 7 / 7,62 are configurations with metal parts removed from alternating poles to increase spacings;
	② Configurations of higher number of poles are obtainable composing modular versions. In order to avoid interference mounting, the terminal row should be interrupted when the number of positions exceeds 30.



Version with antirotation pegs is available on 2 poles connections. Disponibile per connessioni a 2 poli versioni con perni antitorione.



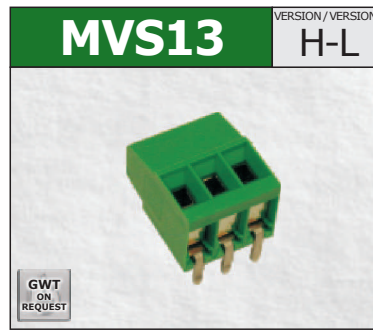
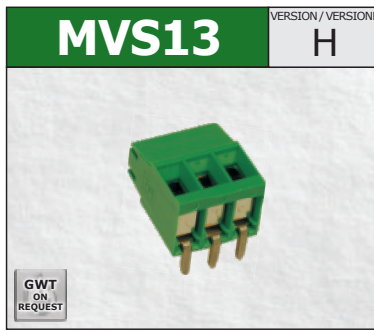
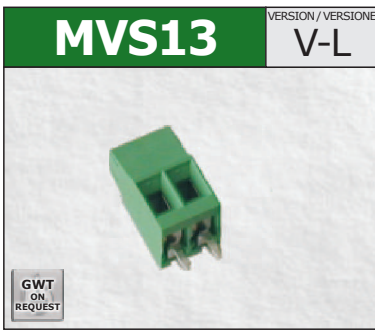
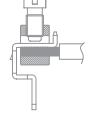
Version with antirotation pegs is available on 2 poles connections. Disponibile per connessioni a 2 poli versioni con perni antitorione.



Version with antirotation pegs is available on 2 poles connections. Disponibile per connessioni a 2 poli versioni con perni antitorione.



**MORSETTIERE
MONOPIANO**
Carrello



3,5 / 3,81 (7 / 7,62)	
2÷12 (2÷6)	Stackable Liscio
13,5A	
130V (450V)	
1,25 kVrms/60s (2,5 kVrms/60s)	
0.2÷0.22Nm / 1.8÷1.9in.lbs.	
max 6mm	
1.0mm ² Stranded 16AWG Flessibile	1.5mm ² Solid 16AWG Rigido
2x0.75mm ² Solid 2x18AWG Rigido	
-40°C ÷ +130°C	

3,5 / 3,81 (7 / 7,62)	
2÷12 (1÷6)	Modular Modulare
13,5A	
130V (450V)	
1,25 kVrms/60s (2,5 kVrms/60s)	
0.2÷0.22Nm / 1.8÷1.9in.lbs.	
max 6mm	
1.0mm ² Stranded 16AWG Flessibile	1.5mm ² Solid 16AWG Rigido
2x0.75mm ² Solid 2x18AWG Rigido	
-40°C ÷ +130°C	

3,5 / 3,81 (7 / 7,62)	
2÷12 (2÷6)	Stackable Liscio
13,5A	
130V (450V)	
1,25 kVrms/60s (2,5 kVrms/60s)	
0.2÷0.22Nm / 1.8÷1.9in.lbs.	
max 6mm	
1.0mm ² Stranded 16AWG Flessibile	1.5mm ² Solid 16AWG Rigido
2x0.75mm ² Solid 2x18AWG Rigido	
-40°C ÷ +130°C	

①	PASSO	mm
②	POLI	
CORRENTE		
TENSIONE		
TENSIONE DI PROVA		
COPPIA CONSIGLIATA		
SPELLATURA CAVO		
CAVI CONNETTIBILI		
TEMP. DI ESERCIZIO		

EN60998	EN60998	UL1059 C22-2 N°158
13,5A	-	12A factory 10A field
130V (450V)	-	150V (300V)
1.0mm ²	-	16÷30AWG
0.2Nm	-	1.8Lb-in
CA02.4718	-	E178356

EN60998	EN60998	UL1059 C22-2 N°158
13,5A	-	12A factory 10A field
130V (450V)	-	150V (300V)
1.0mm ²	-	16÷30AWG
0.2Nm	-	1.8Lb-in
CA02.4718	-	E178356

EN60998	EN60998	UL1059 C22-2 N°158
13,5A	-	12A factory 10A field
130V (450V)	-	150V (300V)
1.0mm ²	-	16÷30AWG
0.2Nm	-	1.8Lb-in
CA02.4718	-	E178356

OMOLOGAZIONI	
CORRENTE	
TENSIONE	
SEZIONE CONDUTTORE	
COPPIA	
FILE	

PA - UL 94 V0	
M2	Galvanized steel Acciaio zincato
Tin-plated copper alloy / Lega di rame stagnata	
Tin-plated copper alloy / Lega di rame stagnata	

PA - UL 94 V0	
M2	Galvanized steel Acciaio zincato
Tin-plated copper alloy / Lega di rame stagnata	
Tin-plated copper alloy / Lega di rame stagnata	

PA - UL 94 V0	
M2	Galvanized steel Acciaio zincato
Tin-plated copper alloy / Lega di rame stagnata	
Tin-plated copper alloy / Lega di rame stagnata	

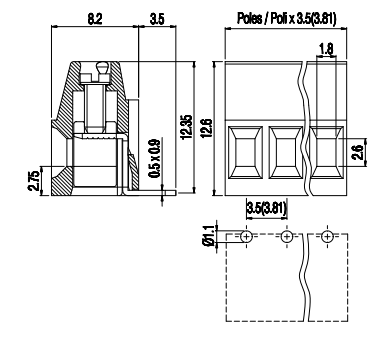
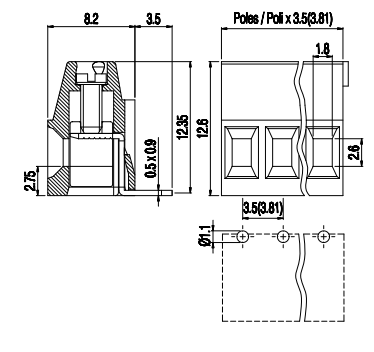
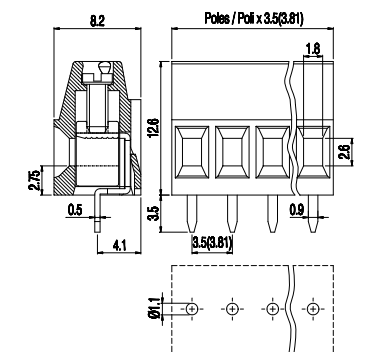
CORPO ISOLANTE	
VITE	
MORSETTO	
TERMINALE	

Series Serie	Poles Poli	Pitch Passo	Version Versione (*)	Colour Colore
MVS13	2÷12	3,5 / 3,81	V-L	* - #
MVS13	2÷6	7 / 7,62	V-L	* - #
Standard		On request / Su richiesta		
GN	GY	BK	BL	RD YL OG

Series Serie	Poles Poli	Pitch Passo	Version Versione (*)	Colour Colore
MVS13	2÷N	3,5 / 3,81	H	* - #
MVS13	1÷N	7 / 7,62	H	* - #
Standard		On request / Su richiesta		
GN	GY	BK	BL	RD YL OG

Series Serie	Poles Poli	Pitch Passo	Version Versione (*)	Colour Colore
MVS13	2÷12	3,5 / 3,81	H-L	* - #
MVS13	2÷6	7 / 7,62	H-L	* - #
Standard		On request / Su richiesta		
GN	GY	BK	BL	RD YL OG

COME ORDINARE	
* Codice personalizzazione (definito da euroclamp)	
COLORI	
# Specificare solo se diverso dallo standard	

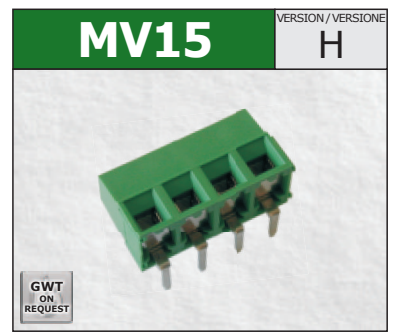
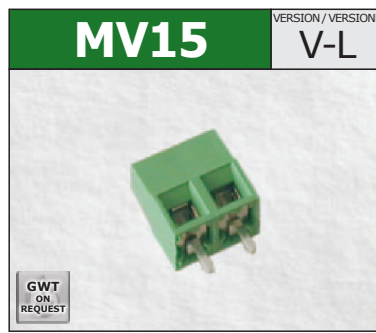
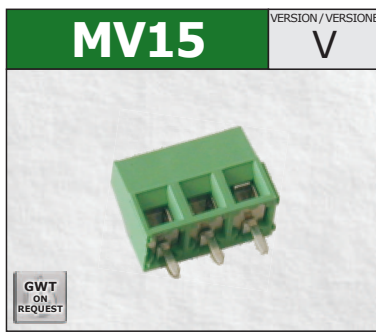
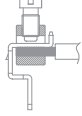


NOTE	
①	I prodotti a passo 7 / 7,62 sono configurazioni con componenti metallici rimossi da poli alterni per aumentarne le distanze;
②	Configurazioni con un numero maggiore di poli sono ottenibili componendo le versioni modulari. Per evitare interferenze di montaggio occorre prevedere un'interruzione della morsetteria quando il numero dei poli è superiore a 30.

Version with antirotation pegs is available on 2 poles connections.
Disponibile per connessioni a 2 poli versioni con perni antitorzione.



**SINGLE DECK
TERMINAL BLOCKS**
Rising clamp



TECHNICAL DATA	① PITCH	mm
	② POLES	
	CURRENT	
	VOLTAGE	
	TEST VOLTAGE	
	RECOMMENDED TORQUE	
	WIRE STRIPPING	
	MAX WIRES SECTION	
	OPERATING TEMP.	

5 / 5,08 (10 / 10,16)		
2 ÷ 12 (1 ÷ 6)	Modular Modulare	
13,5A		
250V (750V)		
2 kVrms/60s (3 kVrms/60s)		
0.5 ÷ 0.55Nm / 4.5 ÷ 4.9in.lbs.		
max 6mm		
1.5mm² 16AWG Stranded Flessibile	2.5mm² 14AWG Solid Rigido	2x1.0mm² 2x16AWG Solid Rigido
-40°C ÷ +130°C		

5 / 5,08 (10 / 10,16)		
2 ÷ 12 (2 ÷ 6)	Stackable Liscio	
13,5A		
250V (750V)		
2 kVrms/60s (3 kVrms/60s)		
0.5 ÷ 0.55Nm / 4.5 ÷ 4.9in.lbs.		
max 6mm		
1.5mm² 16AWG Stranded Flessibile	1.5mm² 16AWG Solid Rigido	2x1.0mm² 2x16AWG Solid Rigido
-40°C ÷ +130°C		

5 / 5,08 (10 / 10,16)		
2 ÷ 12 (1 ÷ 6)	Modular Modulare	
13,5A		
250V (750V)		
2 kVrms/60s (3 kVrms/60s)		
0.5 ÷ 0.55Nm / 4.5 ÷ 4.9in.lbs.		
max 6mm		
1.5mm² 16AWG Stranded Flessibile	1.5mm² 16AWG Solid Rigido	2x1.0mm² 2x16AWG Solid Rigido
-40°C ÷ +130°C		

APPROVAL DATA	APPROVALS			
	CURRENT	13,5A	-	13,5A factory 10A field
	VOLTAGE	250V (750V)	-	300V (600V)
	WIRE SECTION	1.5mm ²	-	16 ÷ 30AWG
	TORQUE	0.5Nm	-	4.5Lb-in
	FILE	EQ202	-	E178356

13,5A	-	13,5A factory 10A field
250V (750V)	-	300V (600V)
1.5mm ²	-	16 ÷ 30AWG
0.5Nm	-	4.5Lb-in
EQ202	-	E178356

13,5A	-	13,5A factory 10A field
250V (750V)	-	300V (600V)
1.5mm ²	-	16 ÷ 30AWG
0.5Nm	-	4.5Lb-in
EQ202	-	E178356

13,5A	-	13,5A factory 10A field
250V (750V)	-	300V (600V)
1.5mm ²	-	16 ÷ 30AWG
0.5Nm	-	4.5Lb-in
EQ202	-	E178356

MATERIALS	HOUSING	PA - UL 94 V0		
	SCREW	M3	Galvanized steel Acciaio zincato	
	CLAMP	Tin-plated copper alloy / Lega di rame stagnata		
	TERMINAL	Tin-plated copper alloy / Lega di rame stagnata		

Galvanized steel Acciaio zincato		
Tin-plated copper alloy / Lega di rame stagnata		
Tin-plated copper alloy / Lega di rame stagnata		

Galvanized steel Acciaio zincato		
Nickelated copper alloy / Lega di rame nichelata		
Tin-plated copper alloy / Lega di rame stagnata		

Galvanized steel Acciaio zincato		
Nickelated copper alloy / Lega di rame nichelata		
Tin-plated copper alloy / Lega di rame stagnata		

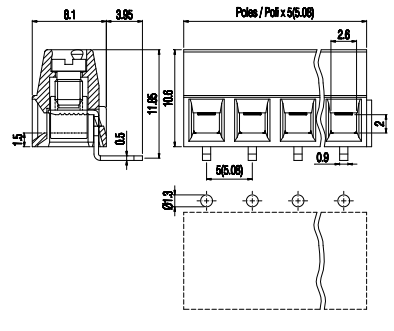
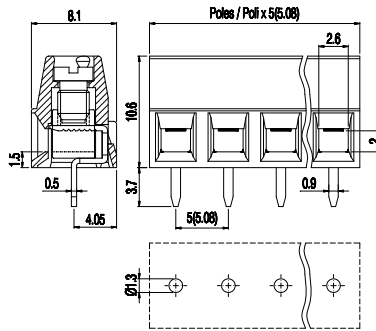
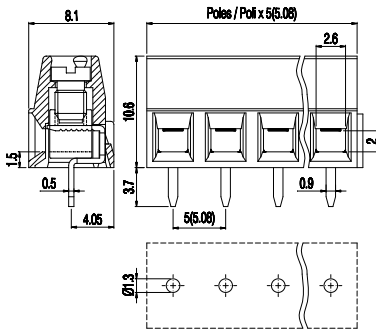
HOW TO ORDER	Series Serie	Poles Poli	Pitch Passo	Version Versione (*)	Colour Colore
	MV15	2 ÷ N	5 / 5,08	V - * - #	#
	MV15	1 ÷ N	10 / 10,16	V - * - #	#
	* Custom code (assigned by euroclamp)				
	COLOURS # To be specified just in case it is different from the standard				

Standard	On request / Su richiesta					
GN	GY	BK	BL	RD	YL	OG

Standard	On request / Su richiesta					
GN	GY	BK	BL	RD	YL	OG

Standard	On request / Su richiesta					
GN	GY	BK	BL	RD	YL	OG

NOTE	① Products of pitches 10 / 10,16 are configurations with metal parts removed from alternating poles to increase spacings;
	② Configurations of higher number of poles are obtainable composing modular versions. In order to avoid interference mounting, the terminal row should be interrupted when the number of positions exceeds 30.

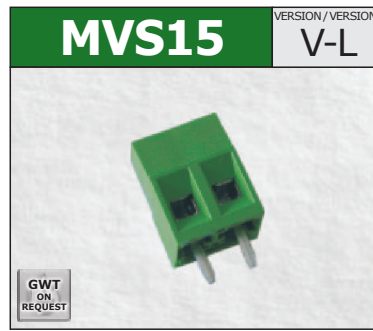
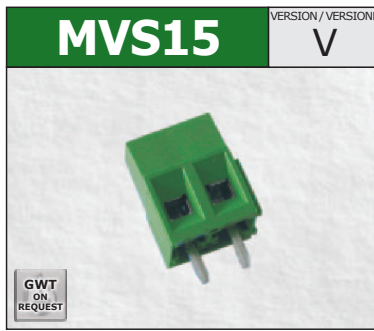
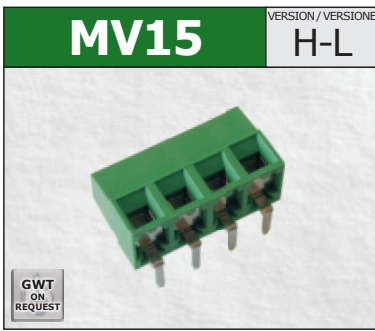
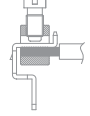


Version with antirotation pegs is available on 2 poles connections. Disponibile per connessioni a 2 poli versioni con perni antitorione.

Version with antirotation pegs is available on 2 poles connections. Disponibile per connessioni a 2 poli versioni con perni antitorione.



**MORSETTIERE
MONOPIANO**
Carrello



5 / 5,08 (10 / 10,16)	
2÷12 (2÷6)	Stackable Liscio
13,5A	
250V (750V)	
2 kVrms/60s (3 kVrms/60s)	
0.5÷0.55Nm / 4.5÷4.9in.lbs.	
max 6mm	
1.5mm ² Stranded 16AWG Flessibile	1.5mm ² Solid 16AWG Rigido
2x1.0mm ² Solid 2x16AWG Rigido	
-40°C ÷ +130°C	

5 / 5,08 (10 / 10,16)	
2÷12 (1÷6)	Modular Modulare
17,5A	
450V (750V)	
2,5 kVrms/60s (3 kVrms/60s)	
0.5÷0.55Nm / 4.5÷4.9in.lbs.	
max 7mm	
1.5mm ² Stranded 16AWG Flessibile	2.5mm ² Solid 14AWG Rigido
2x1.0mm ² Solid 2x16AWG Rigido	
-40°C ÷ +130°C	

5 / 5,08 (10 / 10,16)	
2÷12 (2÷6)	Stackable Liscio
17,5A	
450V (750V)	
2,5 kVrms/60s (3 kVrms/60s)	
0.5÷0.55Nm / 4.5÷4.9in.lbs.	
max 7mm	
1.5mm ² Stranded 16AWG Flessibile	2.5mm ² Solid 14AWG Rigido
2x1.0mm ² Solid 2x16AWG Rigido	
-40°C ÷ +130°C	

①	PASSO	mm
②	POLI	
CORRENTE		
TENSIONE		
TENSIONE DI PROVA		
COPPIA CONSIGLIATA		
SPELLATURA CAVO		
CAVI CONNETTIBILI		
TEMP. DI ESERCIZIO		

EN60998	EN60998	UL1059 C22-2 N°158
13,5A	-	13,5A factory 10A field
250V (750V)	-	300V (600V)
1.5mm ²	-	16÷30AWG
0.5Nm	-	4.5Lb-in
EQ202	-	E178356

EN60998	EN60998	UL1059 C22-2 N°158
17,5A	-	17,5A factory 10A field
450V (750V)	-	300V (600V)
1.5mm ²	-	16÷30AWG
0.5Nm	-	4.5Lb-in
CA02.00598	-	E178356

EN60998	EN60998	UL1059 C22-2 N°158
17,5A	-	17,5A factory 10A field
450V (750V)	-	300V (600V)
1.5mm ²	-	16÷30AWG
0.5Nm	-	4.5Lb-in
CA02.00598	-	E178356

OMOLOGAZIONI	
CORRENTE	
TENSIONE	
SEZIONE CONDUTTORE	
COPPIA	
FILE	

PA - UL 94 V0	
M3	Galvanized steel Acciaio zincato
Nickelated copper alloy / Lega di rame nichelata	
Tin-plated copper alloy / Lega di rame stagnata	

PA - UL 94 V0	
M3	Galvanized steel Acciaio zincato
Nickelated copper alloy / Lega di rame nichelata	
Tin-plated copper alloy / Lega di rame stagnata	

PA - UL 94 V0	
M3	Galvanized steel Acciaio zincato
Nickelated copper alloy / Lega di rame nichelata	
Tin-plated copper alloy / Lega di rame stagnata	

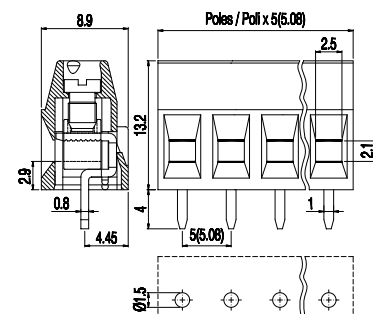
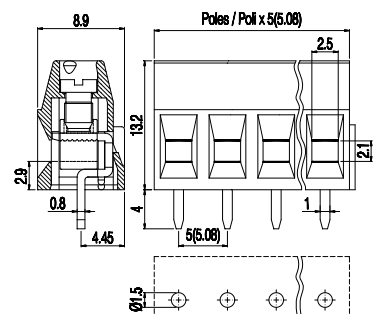
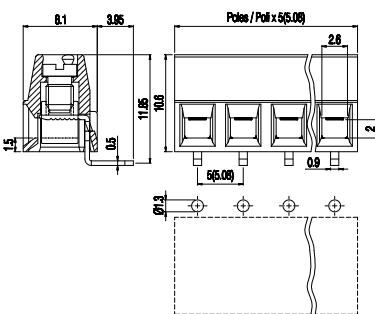
CORPO ISOLANTE	
VITE	
MORSETTO	
TERMINALE	

Series Serie	Poles Poli	Pitch Passo	Version Versione (*)	Colour Colore
MV15	2÷12	5 / 5,08	- H-L - *	- #
MV15	2÷6	- 10 / 10,16	- H-L - *	- #
Standard	On request / Su richiesta			

Series Serie	Poles Poli	Pitch Passo	Version Versione (*)	Colour Colore
MVS15	2÷N	5 / 5,08	- V - *	- #
MVS15	1÷N	- 10 / 10,16	- V - *	- #
Standard	On request / Su richiesta			

Series Serie	Poles Poli	Pitch Passo	Version Versione (*)	Colour Colore
MVS15	2÷12	5 / 5,08	- V-L - *	- #
MVS15	2÷6	- 10 / 10,16	- V-L - *	- #
Standard	On request / Su richiesta			

COME ORDINARE	
* Codice personalizzazione (definito da euroclamp)	
COLORI	
# Specificare solo se diverso dallo standard	



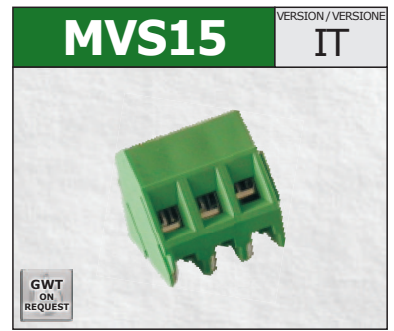
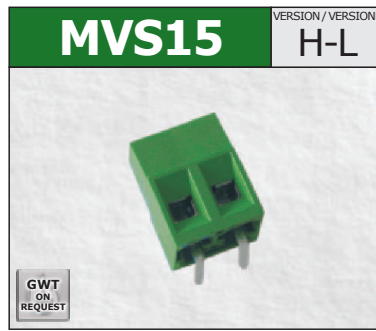
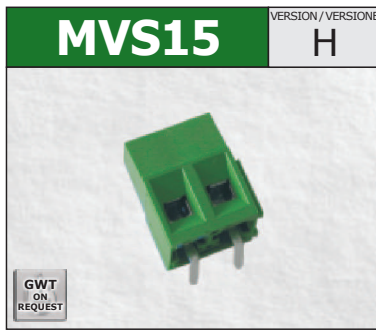
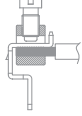
Version with antirotation pegs is available on 2 poles connections. Disponibile per connessioni a 2 poli versioni con perni antitorione.

Version with antirotation pegs is available on 2 poles connections. Disponibile per connessioni a 2 poli versioni con perni antitorione.

NOTE	
①	I prodotti a passo 10 / 10,16 sono configurazioni con componenti metallici rimossi da poli alterni per aumentarne le distanze;
②	Configurazioni con un numero maggiore di poli sono ottenibili componendo le versioni modulari. Per evitare interferenze di montaggio occorre prevedere un'interruzione della morsetteria quando il numero dei poli è superiore a 30.



**SINGLE DECK
TERMINAL BLOCKS**
Rising clamp



TECHNICAL DATA	① PITCH	mm
	② POLES	
	CURRENT	
	VOLTAGE	
	TEST VOLTAGE	
	RECOMMENDED TORQUE	
	WIRE STRIPPING	
	MAX WIRES SECTION	
	OPERATING TEMP.	

5 / 5,08 (10 / 10,16)		
2÷12 (1÷6)	Modular Modulare	
17,5A		
450V (750V)		
2,5 kVrms/60s (3 kVrms/60s)		
0.5÷0.55Nm / 4.5÷4.9in.lbs.		
max 7mm		
1.5mm² 16AWG Stranded Flessibile	2.5mm² 14AWG Solid Rigido	2x1.0mm² 2x16AWG Solid Rigido
-40°C ÷ +130°C		

5 / 5,08 (10 / 10,16)		
2÷12 (2÷6)	Stackable Liscio	
17,5A		
450V (750V)		
2,5 kVrms/60s (3 kVrms/60s)		
0.5÷0.55Nm / 4.5÷4.9in.lbs.		
max 7mm		
1.5mm² 16AWG Stranded Flessibile	2.5mm² 14AWG Solid Rigido	2x1.0mm² 2x16AWG Solid Rigido
-40°C ÷ +130°C		

5 (10)		
2÷3 (1÷2)	Modular Modulare	
17,5A		
450V (750V)		
2,5 kVrms/60s (3 kVrms/60s)		
0.5÷0.55Nm / 4.5÷4.9in.lbs.		
max 7mm		
1.5mm² 16AWG Stranded Flessibile	2.5mm² 14AWG Solid Rigido	2x1.0mm² 2x16AWG Solid Rigido
-40°C ÷ +130°C		

APPROVAL DATA	APPROVALS			
	CURRENT	17,5A	-	17,5A factory 10A field
	VOLTAGE	450V (750V)	-	300V (600V)
	WIRE SECTION	1.5mm ²	-	16÷30AWG
	TORQUE	0.5Nm	-	4.5Lb-in
	FILE	CA02.00598	-	E178356

EN60998	EN60998	UL1059 C22-2 N°158
17,5A	-	17,5A factory 10A field
450V (750V)	-	300V (600V)
1.5mm ²	-	16÷30AWG
0.5Nm	-	4.5Lb-in
CA02.00598	-	E178356

EN60998	EN60998	UL1059 C22-2 N°158
17,5A	-	17,5A factory 10A field
450V (750V)	-	300V (600V)
1.5mm ²	-	16÷30AWG
0.5Nm	-	4.5Lb-in
CA02.00598	-	E178356

EN60998	EN60998	UL1059 C22-2 N°158
17,5A	-	17,5A factory 10A field
450V (750V)	-	300V (600V)
1.5mm ²	-	16÷30AWG
0.5Nm	-	4.5Lb-in
CA02.00598	-	E178356

MATERIALS	HOUSING	PA - UL 94 V0		
	SCREW	M3	Galvanized steel Acciaio zincato	
	CLAMP	Nickel copper alloy / Lega di rame nichelata		
	TERMINAL	Tin-plated copper alloy / Lega di rame stagnata		

PA - UL 94 V0	PA - UL 94 V0		
M3	Galvanized steel Acciaio zincato		
Nickel copper alloy / Lega di rame nichelata			
Tin-plated copper alloy / Lega di rame stagnata			

PA - UL 94 V0	PA - UL 94 V0		
M3	Galvanized steel Acciaio zincato		
Nickel copper alloy / Lega di rame nichelata			
Tin-plated copper alloy / Lega di rame stagnata			

PA - UL 94 V0	PA - UL 94 V0		
M3	Galvanized steel Acciaio zincato		
Nickel copper alloy / Lega di rame nichelata			
Tin-plated copper alloy / Lega di rame stagnata			

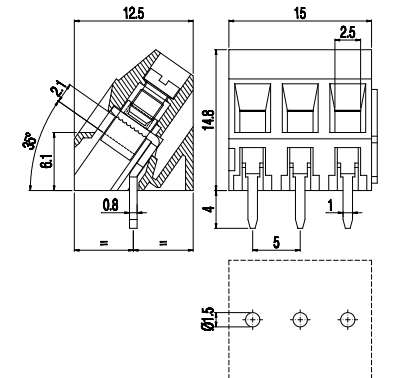
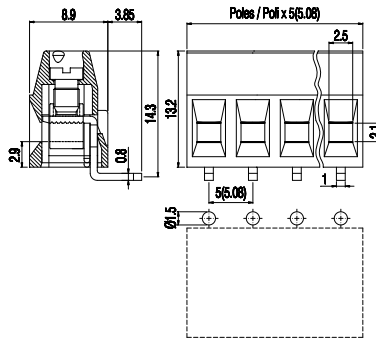
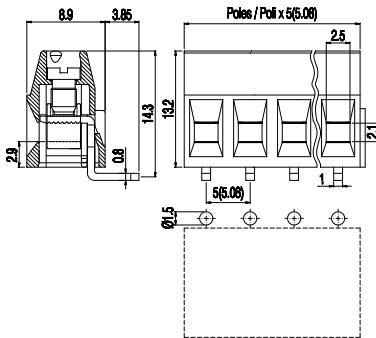
HOW TO ORDER	Series Serie	Poles Poli	Pitch Passo	Version Versione (*)	Colour Colore
	MVS15	2÷N	- 5/5,08	- H	- * - #
	MVS15	1÷N	-10/10,16	- H	- * - #
* Custom code (assigned by euroclamp)					
COLOURS # To be specified just in case it is different from the standard					

Standard	On request / Su richiesta				
GN	GY	BK	BL	RD	YL
OG					

Standard	On request / Su richiesta				
GN	GY	BK	BL	RD	YL
OG					

Standard	On request / Su richiesta				
GN	GY	BK	BL	RD	YL
OG					

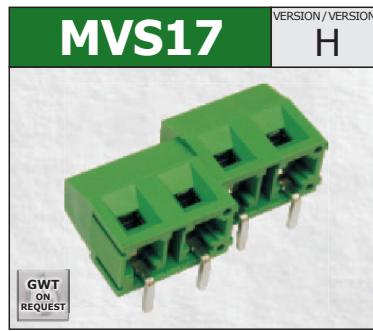
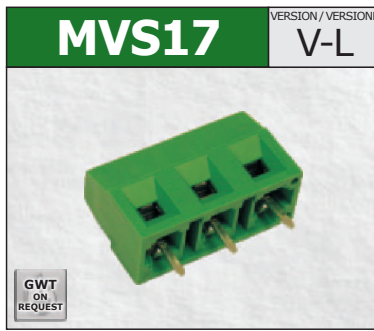
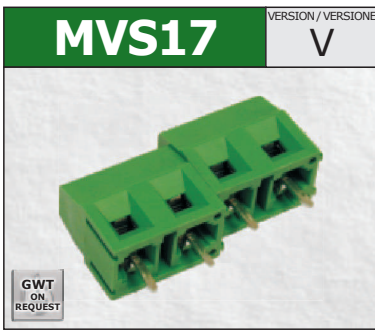
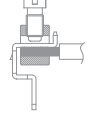
NOTE	① Products of pitches 10 / 10,16 / 15 / 15,24 are configurations with metal parts removed from alternating poles to increase spacings;
	② Configurations of higher number of poles are obtainable composing modular versions. In order to avoid interference mounting, the terminal row should be interrupted when the number of positions exceeds 30.



Version with antirotation pegs is available on 2 poles connections. Disponibile per connessioni a 2 poli versioni con perni antitorzione.



**MORSETTIERE
MONOPIANO**
Carrello



7,5 / 7,62 (15 / 15,24)		
2÷12 (1÷6)	Modular Modulare	
17,5A		
750V		
3 kVrms/60s		
0.5÷0.55Nm / 4.5÷4.9in.lbs.		
max 7mm		
1.5mm² 16AWG	2.5mm² 14AWG	2x1.0mm² 2x16AWG
Stranded Flessibile	Solid Rigido	Solid Rigido
-40°C ÷ +130°C		

7,5 / 7,62 (15 / 15,24)		
2÷12 (2÷6)	Stackable Liscio	
17,5A		
750V		
3 kVrms/60s		
0.5÷0.55Nm / 4.5÷4.9in.lbs.		
max 7mm		
1.5mm² 16AWG	2.5mm² 14AWG	2x1.0mm² 2x16AWG
Stranded Flessibile	Solid Rigido	Solid Rigido
-40°C ÷ +130°C		

7,5 / 7,62 (15 / 15,24)		
2÷12 (1÷6)	Modular Modulare	
17,5A		
750V		
3 kVrms/60s		
0.5÷0.55Nm / 4.5÷4.9in.lbs.		
max 7mm		
1.5mm² 16AWG	2.5mm² 14AWG	2x1.0mm² 2x16AWG
Stranded Flessibile	Solid Rigido	Solid Rigido
-40°C ÷ +130°C		

①	PASSO	mm
②	POLI	
CORRENTE		
TENSIONE		
TENSIONE DI PROVA		
COPPIA CONSIGLIATA		
SPELLATURA CAVO		
CAVI CONNETTIBILI		
TEMP. DI ESERCIZIO		

EN60998	EN60998	UL1059 C22-2 N°158
17,5A	-	17,5A factory 10A field
750V	-	300V (600V)
1.5mm ²	-	16÷30AWG
0.5Nm	-	4.5Lb-in
CA02.00598	-	E178356

EN60998	EN60998	UL1059 C22-2 N°158
17,5A	-	17,5A factory 10A field
750V	-	300V (600V)
1.5mm ²	-	16÷30AWG
0.5Nm	-	4.5Lb-in
CA02.00598	-	E178356

EN60998	EN60998	UL1059 C22-2 N°158
17,5A	-	17,5A factory 10A field
750V	-	300V (600V)
1.5mm ²	-	16÷30AWG
0.5Nm	-	4.5Lb-in
CA02.00598	-	E178356

OMOLOGAZIONI	
CORRENTE	
TENSIONE	
SEZIONE CONDUTTORE	
COPPIA	
FILE	

PA - UL 94 V0	
M3	Galvanized steel Acciaio zincato
Nicked copper alloy / Lega di rame nichelata	
Tin-plated copper alloy / Lega di rame stagnata	

PA - UL 94 V0	
M3	Galvanized steel Acciaio zincato
Nicked copper alloy / Lega di rame nichelata	
Tin-plated copper alloy / Lega di rame stagnata	

PA - UL 94 V0	
M3	Galvanized steel Acciaio zincato
Nicked copper alloy / Lega di rame nichelata	
Tin-plated copper alloy / Lega di rame stagnata	

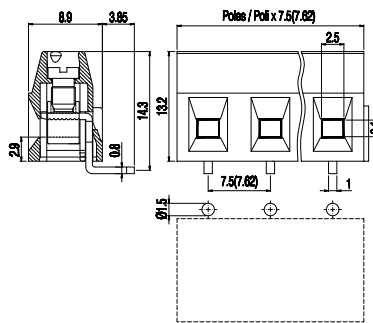
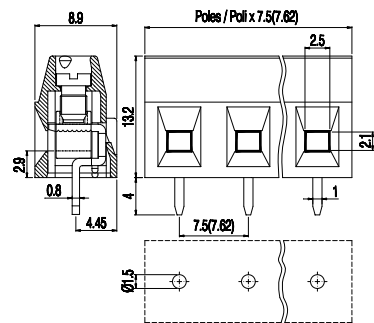
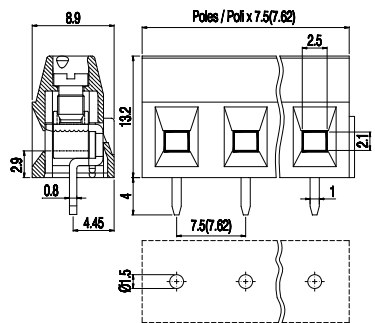
CORPO ISOLANTE	
VITE	
MORSETTO	
TERMINALE	

Series Serie	Poles Poli	Pitch Passo	Version Versione (*)	Colour Colore
MVS17	2÷N	-7,5/7,62	-V	-* -#
MVS17	1÷N	-15/15,24	-V	-* -#
Standard		On request / Su richiesta		
GN	GY	BK	BL	RD YL OG

Series Serie	Poles Poli	Pitch Passo	Version Versione (*)	Colour Colore
MVS17	2÷12	-7,5/7,62	-V-L	-* -#
MVS17	2÷6	-15/15,24	-V-L	-* -#
Standard		On request / Su richiesta		
GN	GY	BK	BL	RD YL OG

Series Serie	Poles Poli	Pitch Passo	Version Versione (*)	Colour Colore
MVS17	2÷N	-7,5/7,62	-H	-* -#
MVS17	1÷N	-15/15,24	-H	-* -#
Standard		On request / Su richiesta		
GN	GY	BK	BL	RD YL OG

COME ORDINARE	
* Codice personalizzazione (definito da euroclamp)	
COLORI	
# Specificare solo se diverso dallo standard	



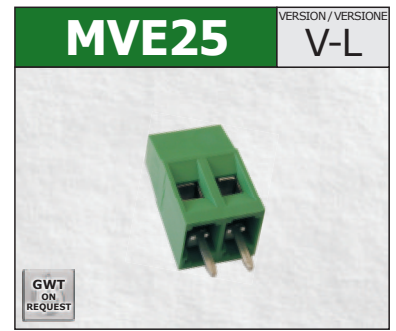
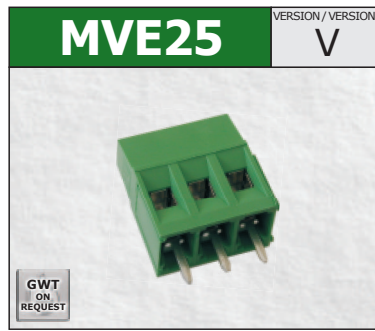
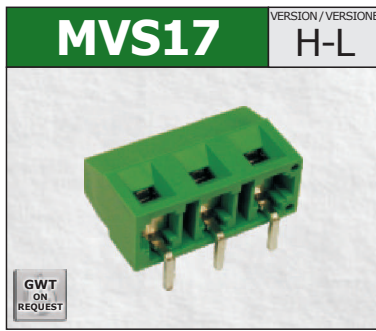
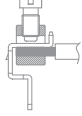
Version with antirotation pegs is available on 2 poles connections. Disponibile per connessioni a 2 poli versioni con perni antitorione.

Version with antirotation pegs is available on 2 poles connections. Disponibile per connessioni a 2 poli versioni con perni antitorione.

NOTE	
①	I prodotti a passo 10 / 10,16 / 15 / 15,24 sono configurazioni con componenti metallici rimossi da poli alterni per aumentarne le distanze;
②	Configurazioni con un numero maggiore di poli sono ottenibili componendo le versioni modulari. Per evitare interferenze di montaggio occorre prevedere un'interruzione della morsettiere quando il numero dei poli è superiore a 30.



**SINGLE DECK
TERMINAL BLOCKS**
Rising clamp



TECHNICAL DATA	① PITCH	mm
	② POLES	
	CURRENT	
	VOLTAGE	
	TEST VOLTAGE	
	RECOMMENDED TORQUE	
	WIRE STRIPPING	
	MAX WIRES SECTION	
	OPERATING TEMP.	

7,5 / 7,62 (15 / 15,24)		
2 ÷ 12 (2 ÷ 6)	Stackable Liscio	
17,5A		
750V		
3 kVrms/60s		
0.5 ÷ 0.55Nm / 4.5 ÷ 4.9in.lbs.		
max 7mm		
1.5mm² 16AWG Stranded Flessibile	2.5mm² 14AWG Solid Rigido	2x1.0mm² 2x16AWG Solid Rigido
-40°C ÷ +130°C		

5 (10)		
2 ÷ 12 (1 ÷ 6)	Modular Modulare	
16A		
450V (750V)		
2,5 kVrms/60s (3 kVrms/60s)		
0.5 ÷ 0.55Nm / 4.5 ÷ 4.9in.lbs.		
max 7mm		
2.5mm² 14AWG Stranded Flessibile	4.0mm² 12AWG Solid Rigido	2x1.5mm² 2x16AWG Solid Rigido
-40°C ÷ +130°C		

5 (10)		
2 ÷ 12 (2 ÷ 6)	Stackable Liscio	
16A		
450V (750V)		
2,5 kVrms/60s (3 kVrms/60s)		
0.5 ÷ 0.55Nm / 4.5 ÷ 4.9in.lbs.		
max 7mm		
2.5mm² 14AWG Stranded Flessibile	4.0mm² 12AWG Solid Rigido	2x1.5mm² 2x16AWG Solid Rigido
-40°C ÷ +130°C		

APPROVAL DATA	APPROVALS			
	CURRENT	17,5A	-	17,5A factory 10A field
	VOLTAGE	750V	-	300V (600V)
	WIRE SECTION	1.5mm ²	-	16 ÷ 30AWG
	TORQUE	0.5Nm	-	4.5Lb-in
	FILE	CA02.00598	-	E178356

EN60998	EN60998	UL1059 C22-2 N°158
17,5A	-	17,5A factory 10A field
750V	-	300V (600V)
1.5mm ²	-	16 ÷ 30AWG
0.5Nm	-	4.5Lb-in
CA02.00598	-	E178356

EN60998	EN60998	UL1059 C22-2 N°158
16A	16A	16A factory 15A field
450V (750V)	450V (750V)	300V (600V)
2.5mm ²	2.5mm ²	14 ÷ 30AWG
0.5Nm	0.5Nm	4.5Lb-in
EP149	N.40023956	E178356

EN60998	EN60998	UL1059 C22-2 N°158
16A	16A	16A factory 15A field
450V (750V)	450V (750V)	300V (600V)
2.5mm ²	2.5mm ²	14 ÷ 30AWG
0.5Nm	0.5Nm	4.5Lb-in
EP149	N.40023956	E178356

MATERIALS	HOUSING	PA - UL 94 V0		
	SCREW	M3	Galvanized steel Acciaio zincato	
	CLAMP	Nickel copper alloy / Lega di rame nichelata		
	TERMINAL	Tin-plated copper alloy / Lega di rame stagnata		

PA - UL 94 V0			
M3	Galvanized steel Acciaio zincato		
Nickel copper alloy / Lega di rame nichelata			
Tin-plated copper alloy / Lega di rame stagnata			

PA - UL 94 V0			
M3	Galvanized steel Acciaio zincato		
Nickel copper alloy / Lega di rame nichelata			
Tin-plated copper alloy / Lega di rame stagnata			

PA - UL 94 V0			
M3	Galvanized steel Acciaio zincato		
Nickel copper alloy / Lega di rame nichelata			
Tin-plated copper alloy / Lega di rame stagnata			

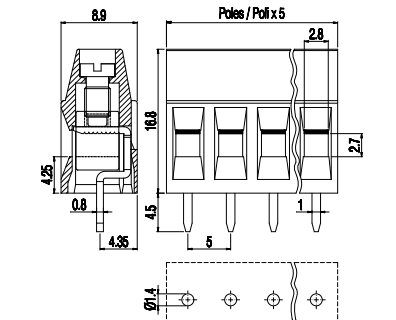
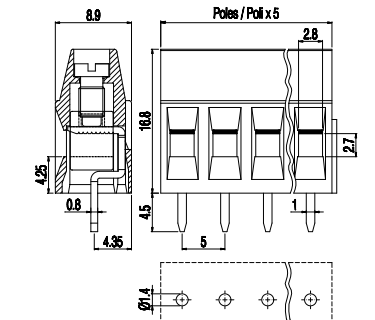
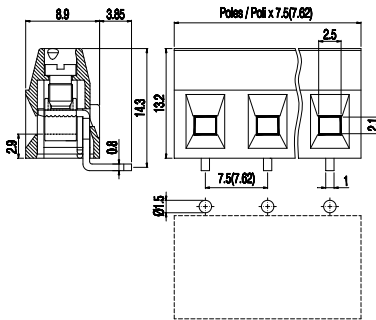
HOW TO ORDER	Series Serie	Poles Poli	Pitch Passo	Version Versione (*)	Colour Colore
	MVS17	2 ÷ 12	- 7,5 / 7,62	- H-L	- * - #
	MVS17	2 ÷ 6	- 15 / 15,24	- H-L	- * - #
* Custom code (assigned by euroclamp)					
COLOURS					
# To be specified just in case it is different from the standard					

Series Serie	Poles Poli	Pitch Passo	Version Versione (*)	Colour Colore		
MVS17	2 ÷ 12	- 7,5 / 7,62	- H-L	- * - #		
MVS17	2 ÷ 6	- 15 / 15,24	- H-L	- * - #		
Standard On request / Su richiesta						

Series Serie	Poles Poli	Pitch Passo	Version Versione (*)	Colour Colore		
MVE25	2 ÷ N	- 5	- V	- * - #		
MVE25	1 ÷ N	- 10	- V	- * - #		
Standard On request / Su richiesta						

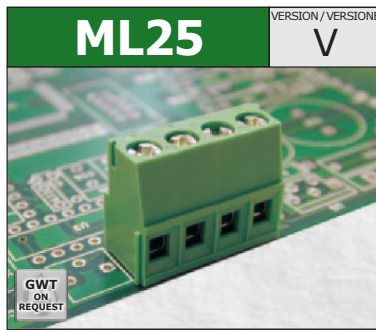
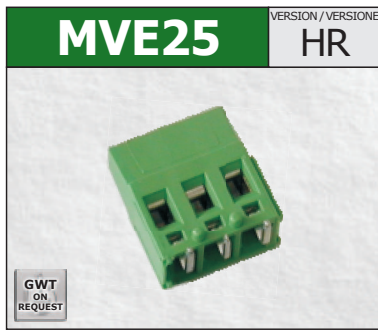
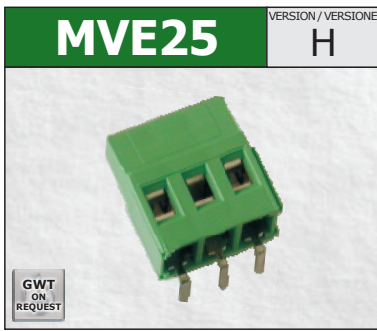
Series Serie	Poles Poli	Pitch Passo	Version Versione (*)	Colour Colore		
MVE25	2 ÷ 12	- 5	- V-L	- * - #		
MVE25	2 ÷ 6	- 10	- V-L	- * - #		
Standard On request / Su richiesta						

NOTE	① Products of pitches 10 / 15 / 15,24 are configurations with metal parts removed from alternating poles to increase spacings;
	② Configurations of higher number of poles are obtainable composing modular versions. In order to avoid interference mounting, the terminal row should be interrupted when the number of positions exceeds 30.

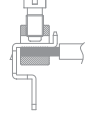


Version with antirotation pegs is available on 2 poles connections.
Disponibile per connessioni a 2 poli versioni con perni antitorione.

Version with antirotation pegs is available on 2 poles connections.
Disponibile per connessioni a 2 poli versioni con perni antitorione.



MORSETTIERE MONOPIANO
Carrello



5 (10)		
2÷12 (1÷6)	Modular Modulare	
16A		
450V (750V)		
2,5 kVrms/60s (3 kVrms/60s)		
0.5÷0.55Nm / 4.5÷4.9in.lbs.		
max 7mm		
2.5mm ² 14AWG	4.0mm ² 12AWG	2x1.5mm ² 2x16AWG
Stranded Flessibile	Solid Rigido	Solid Rigido
-40°C ÷ +130°C		

5 (10)		
2÷3 (1÷2)	Modular Modulare	
16A		
250V (750V)		
2 kVrms/60s (3 kVrms/60s)		
0.5÷0.55Nm / 4.5÷4.9in.lbs.		
max 7mm		
2.5mm ² 14AWG	4.0mm ² 12AWG	2x1.5mm ² 2x16AWG
Stranded Flessibile	Solid Rigido	Solid Rigido
-40°C ÷ +130°C		

5 (10)		
2÷3 (1÷2)	Modular Modulare	
16A		
250V (750V)		
2 kVrms/60s (3 kVrms/60s)		
0.5÷0.55Nm / 4.5÷4.9in.lbs.		
max 7mm		
2.5mm ² 14AWG	4.0mm ² 12AWG	2x1.5mm ² 2x16AWG
Stranded Flessibile	Solid Rigido	Solid Rigido
-40°C ÷ +130°C		

①	PASSO	mm
②	POLI	
CORRENTE		
TENSIONE		
TENSIONE DI PROVA		
COPPIA CONSIGLIATA		
SPELLATURA CAVO		
CAVI CONNETTIBILI		
TEMP. DI ESERCIZIO		

DATI TECNICI

EN60998	EN60998	UL1059 C22-2 N°158
16A	16A	16A factory 15A field
450V (750V)	450V (750V)	300V (600V)
2.5mm ²	2.5mm ²	14÷30AWG
0.5Nm	0.5Nm	4.5Lb-in
EP149	N.40023956	E178356

EN60998	EN60998	UL1059 C22-2 N°158
16A	16A	16A factory 15A field
250V (750V)	250V (750V)	300V
2.5mm ²	2.5mm ²	14÷30AWG
0.5Nm	0.5Nm	4.5Lb-in
EP149	N.40023956	E178356

EN60998	EN60998	UL1059 C22-2 N°158
16A	-	15A factory 15A field
250V (750V)	-	300V
2.5mm ²	-	14÷30AWG
0.5Nm	-	4.5Lb-in
CA02.01614	-	E178356

OMOLOGAZIONI	
CORRENTE	
TENSIONE	
SEZIONE CONDUTTORE	
COPPIA	
FILE	

DATI DI OMOLOGAZIONE

PA - UL 94 V0	
M3	Galvanized steel Acciaio zincato
Nicked copper alloy / Lega di rame nichelata	
Tin-plated copper alloy / Lega di rame stagnata	

PA - UL 94 V0	
M3	Galvanized steel Acciaio zincato
Nicked copper alloy / Lega di rame nichelata	
Tin-plated copper alloy / Lega di rame stagnata	

PA - UL 94 V0	
M3	Galvanized steel Acciaio zincato
Nicked copper alloy / Lega di rame nichelata	
Tin-plated copper alloy / Lega di rame stagnata	

CORPO ISOLANTE	
VITE	
MORSETTO	
TERMINALE	

MATERIALI

Series Serie	Poles Poli	Pitch Passo	Version Versione	(*)	Colour Colore
MVE25	2÷N	5	H	*	#
MVE25	1÷N	10	H	*	#

Standard	On request / Su richiesta					
GN	GY	BK	BL	RD	YL	OG

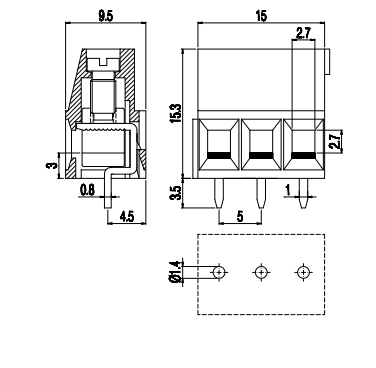
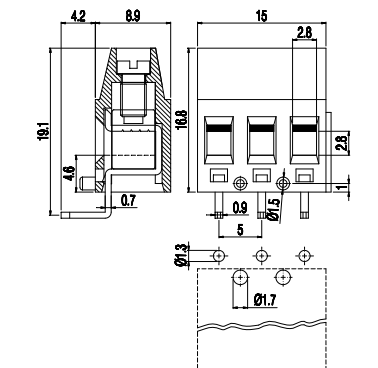
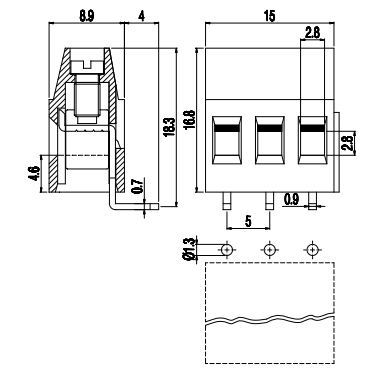
Series Serie	Poles Poli	Pitch Passo	Version Versione	(*)	Colour Colore
MVE25	2÷N	5	HR	*	#
MVE25	1÷N	10	HR	*	#

Standard	On request / Su richiesta					
GN	GY	BK	BL	RD	YL	OG

Series Serie	Poles Poli	Pitch Passo	Version Versione	(*)	Colour Colore
ML25	2÷N	5	V	*	#
ML25	1÷N	10	V	*	#

Standard	On request / Su richiesta					
GN	GY	BK	BL	RD	YL	OG

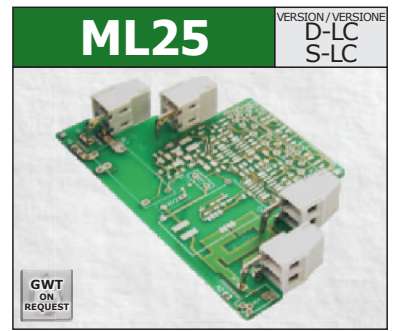
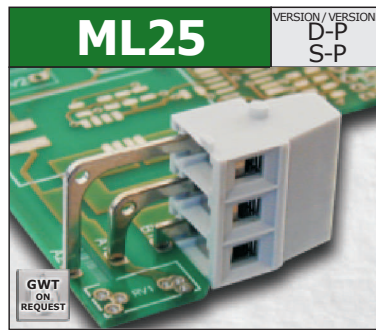
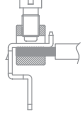
COME ORDINARE	
* Codice personalizzazione (definito da euroclamp)	
COLORI	
# Specificare solo se diverso dallo standard	



NOTE	
①	I prodotti a passo 10 / 15 / 15,24 sono configurazioni con componenti metallici rimossi da poli alterni per aumentarne le distanze;
②	Configurazioni con un numero maggiore di poli sono ottenibili componendo le versioni modulari. Per evitare interferenze di montaggio occorre prevedere un'interruzione della morsettiere quando il numero dei poli è superiore a 30.



**SINGLE DECK
TERMINAL BLOCKS**
Rising clamp



TECHNICAL DATA	① PITCH	mm
	② POLES	
	CURRENT	
	VOLTAGE	
	TEST VOLTAGE	
	RECOMMENDED TORQUE	
	WIRE STRIPPING	
	MAX WIRES SECTION	
	OPERATING TEMP.	

5 (10)		
2÷4 (1÷2)	Stackable Liscio	
16A		
250V (750V)		
2 kVrms/60s (3 kVrms/60s)		
0.5÷0.55Nm / 4.5÷4.9in.lbs.		
max 7mm		
2.5mm² 14AWG	4.0mm² 12AWG	2x1.5mm² 2x16AWG
Stranded Flessibile	Solid Rigido	Solid Rigido
-40°C ÷ +130°C		

5 (10)		
3 (2)	With side poles Con poli laterali	
16A		
250V (750V)		
2 kVrms/60s (3 kVrms/60s)		
0.5÷0.55Nm / 4.5÷4.9in.lbs.		
max 7mm		
2.5mm² 14AWG	4.0mm² 12AWG	2x1.5mm² 2x16AWG
Stranded Flessibile	Solid Rigido	Solid Rigido
-40°C ÷ +130°C		

5 (10)		
2÷3 (1÷2)	Stackable Liscio	
16A		
250V (750V)		
2 kVrms/60s (3 kVrms/60s)		
0.5÷0.55Nm / 4.5÷4.9in.lbs.		
max 7mm		
2.5mm² 14AWG	4.0mm² 12AWG	2x1.5mm² 2x16AWG
Stranded Flessibile	Solid Rigido	Solid Rigido
-40°C ÷ +130°C		

APPROVAL DATA	APPROVALS			
	CURRENT	16A	-	15A factory 15A field
	VOLTAGE	250V (750V)	-	300V
	WIRE SECTION	2.5mm ²	-	14÷30AWG
	TORQUE	0.5Nm	-	4.5Lb-in
	FILE	CA02.01614	-	E178356

EN60998	EN60998	UL1059 C22-2 N°158
16A	-	15A factory 15A field
250V (750V)	-	300V
2.5mm ²	-	14÷30AWG
0.5Nm	-	4.5Lb-in
CA02.01614	-	E178356

EN60998	EN60998	UL1059 C22-2 N°158
16A	-	15A factory 15A field
250V (750V)	-	300V
2.5mm ²	-	14÷30AWG
0.5Nm	-	4.5Lb-in
CA02.01614	-	E178356

EN60998	EN60998	UL1059 C22-2 N°158
16A	-	15A factory 15A field
250V (750V)	-	300V
2.5mm ²	-	14÷30AWG
0.5Nm	-	4.5Lb-in
CA02.01614	-	E178356

MATERIALS	HOUSING	PA - UL 94 V0		
	SCREW	M3	Galvanized steel Acciaio zincato	
	CLAMP	Nickel copper alloy / Lega di rame nichelata		
	TERMINAL	Tin-plated copper alloy / Lega di rame stagnata		

PA - UL 94 V0				
M3	Captive Imperdibile	Galvanized steel Acciaio zincato		
Nickel copper alloy / Lega di rame nichelata				
Tin-plated copper alloy / Lega di rame stagnata				

PA - UL 94 V0				
M3	Captive Imperdibile	Galvanized steel Acciaio zincato		
Nickel copper alloy / Lega di rame nichelata				
Tin-plated copper alloy / Lega di rame stagnata				

PA - UL 94 V0				
M3	Captive Imperdibile	Galvanized steel Acciaio zincato		
Nickel copper alloy / Lega di rame nichelata				
Tin-plated copper alloy / Lega di rame stagnata				

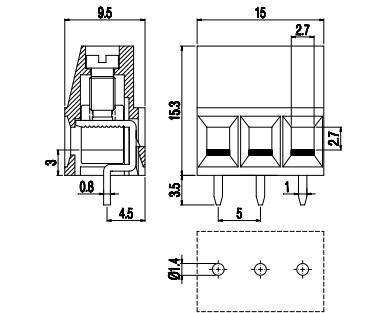
HOW TO ORDER	Series Serie	Poles Poli	Pitch Passo	Version Versione	(*)	Colour Colore
	ML25	2÷4	5	V-L	*	#
* Custom code (assigned by euroclamp)						
COLOURS	# To be specified just in case it is different from the standard					
	Standard	On request / Su richiesta				

Series Serie	Poles Poli	Pitch Passo	Version Versione	(*)	Colour Colore
ML25	3	5	D-P	*	#
			S-P		
			S-P		
			S-P		
Standard	On request / Su richiesta				

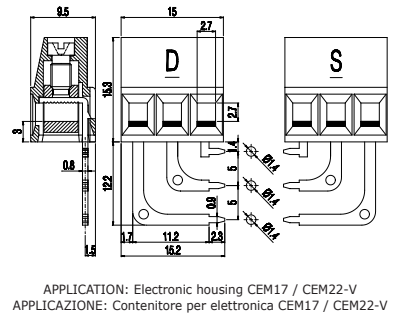
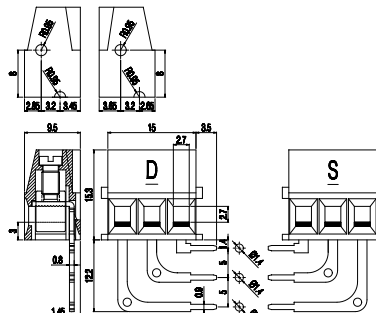
Series Serie	Poles Poli	Pitch Passo	Version Versione	(*)	Colour Colore
ML25	2÷3	5	D-LC	*	#
			S-LC		
			S-LC		
			S-LC		
Standard	On request / Su richiesta				

Series Serie	Poles Poli	Pitch Passo	Version Versione	(*)	Colour Colore
ML25	1÷2	10	V-L	*	#
			V-L		
			V-L		
			V-L		
Standard	On request / Su richiesta				

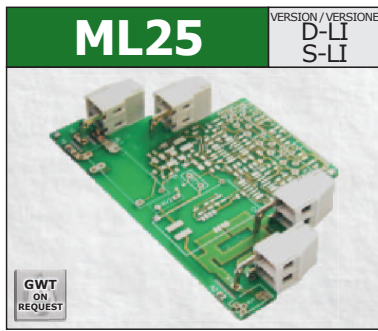
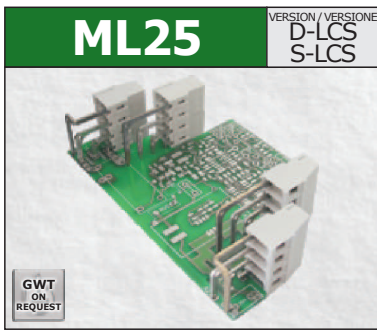
NOTE	① Products of pitches 10 are configurations with metal parts removed from alternating poles to increase spacings;
	② Configurations of higher number of poles are obtainable composing modular versions. In order to avoid interference mounting, the terminal row should be interrupted when the number of positions exceeds 30.



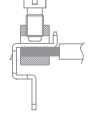
APPLICATION: Electronic housing CEM35-H
APPLICAZIONE: Contenitore per elettronica CEM35-H



APPLICATION: Electronic housing CEM17 / CEM22-V
APPLICAZIONE: Contenitore per elettronica CEM17 / CEM22-V



MORSETTIERE
MONOPIANO
Carrello



5				
4	Stackable Liscio			
16A				
250V (750V)				
2 kVrms/60s (3 kVrms/60s)				
0.5 ÷ 0.55Nm / 4.5 ÷ 4.9in.lbs.				
max 7mm				
2.5mm ² 14AWG	4.0mm ² 12AWG	Solid Rigido	2x1.5mm ² 2x16AWG	Solid Rigido
-40°C ÷ +130°C				

5 (10)				
2 ÷ 3 (1 ÷ 2)	Stackable Liscio			
16A				
250V (750V)				
2 kVrms/60s (3 kVrms/60s)				
0.5 ÷ 0.55Nm / 4.5 ÷ 4.9in.lbs.				
max 7mm				
2.5mm ² 14AWG	4.0mm ² 12AWG	Solid Rigido	2x1.5mm ² 2x16AWG	Solid Rigido
-40°C ÷ +130°C				

5 / 5,08				
2 ÷ 3	Modular Modulare			
24A				
250V				
2 kVrms/60s				
0.4 ÷ 0.44Nm / 3.5 ÷ 3.8in.lbs.				
max 9mm				
2.5mm ² 14AWG	4.0mm ² 12AWG	Solid Rigido	2x1.5mm ² 2x16AWG	Solid Rigido
-40°C ÷ +105°C				

①	PASSO	mm
②	POLI	
CORRENTE		
TENSIONE		
TENSIONE DI PROVA		
COPPIA CONSIGLIATA		
SPELLATURA CAVO		
CAVI CONNETTIBILI		
TEMP. DI ESERCIZIO		

DATI TECNICI

EN60998	EN60998	UL1059 C22-2 N°158
16A	-	15A factory 15A field
250V (750V)	-	300V
2.5mm ²	-	14 ÷ 30AWG
0.5Nm	-	4.5Lb-in
CA02.01614	-	E178356

EN60998	EN60998	UL1059 C22-2 N°158
16A	-	15A factory 15A field
250V (750V)	-	300V
2.5mm ²	-	14 ÷ 30AWG
0.5Nm	-	4.5Lb-in
CA02.01614	-	E178356

EN60998	EN60998	UL1059 C22-2 N°158
-	-	20A factory
-	-	300V
-	-	12 ÷ 24AWG
-	-	3.5Lb-in
-	-	E178356

OMOLOGAZIONI	
CORRENTE	
TENSIONE	
SEZIONE CONDUTTORE	
COPPIA	
FILE	

DATI DI OMOLOGAZIONE

PA - UL 94 V0	
M3	Galvanized steel Acciaio zincato
Nickel copper alloy / Lega di rame nichelata	
Tin-plated copper alloy / Lega di rame stagnata	

PA - UL 94 V0	
M3	Galvanized steel Acciaio zincato
Nickel copper alloy / Lega di rame nichelata	
Tin-plated copper alloy / Lega di rame stagnata	

PA - UL 94 V0	
M2.5	Galvanized steel Acciaio zincato
Cr3 Plated steel / Acciaio cromato	
Tin-plated copper alloy / Lega di rame stagnata	

CORPO ISOLANTE	
VITE	
MORSETTO	
TERMINALE	

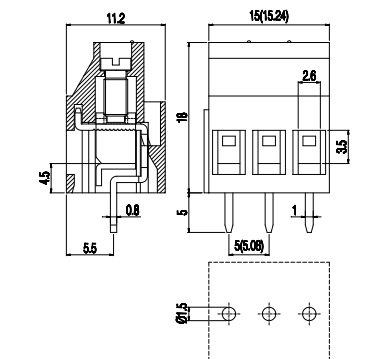
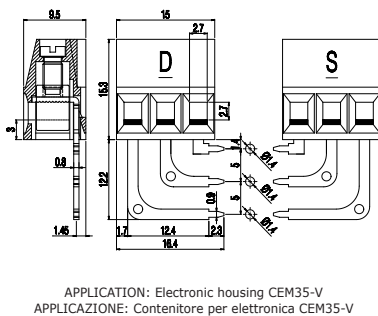
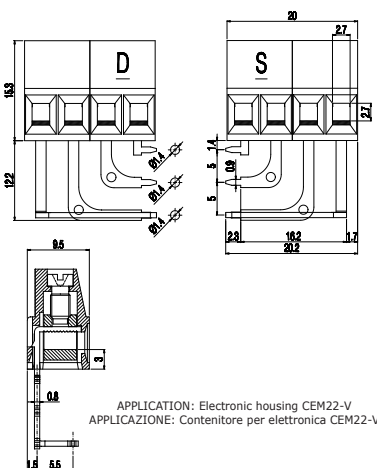
MATERIALI

Series Serie	Poles Poli	Pitch Passo	Version Versione (*)	Colour Colore		
ML25	4	5	D-LCS S-LCS	* - #		
Standard	On request / Su richiesta					
GY	GN	BK	BL	RD	YL	OG

Series Serie	Poles Poli	Pitch Passo	Version Versione (*)	Colour Colore		
ML25	3	5	D-LI S-LI	* - #		
ML25	2	10	D-LI S-LI	* - #		
Standard	On request / Su richiesta					
GY	GN	BK	BL	RD	YL	OG

Series Serie	Poles Poli	Pitch Passo	Version Versione (*)
MVST25	2 ÷ N	5 / 5,08	V - *
Standard	On request / Su richiesta		
GN			

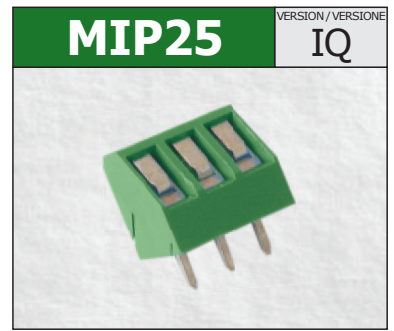
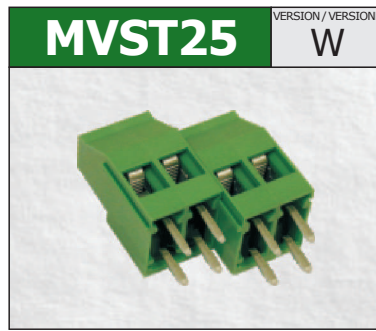
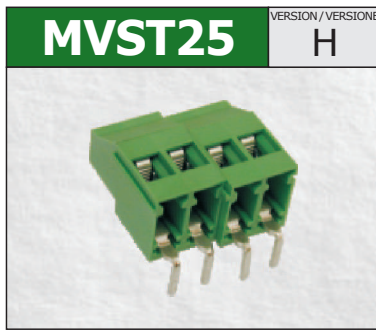
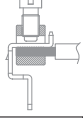
COME ORDINARE	
* Codice personalizzazione (definito da euroclamp)	
COLORI	
# Specificare solo se diverso dallo standard	



NOTE	
① I prodotti a passo 10 sono configurazioni con componenti metallici rimossi da poli alterni per aumentarne le distanze;	
② Configurazioni con un numero maggiore di poli sono ottenibili componendo le versioni modulari. Per evitare interferenze di montaggio occorre prevedere un'interruzione della morsetteria quando il numero dei poli è superiore a 30.	



**SINGLE DECK
TERMINAL BLOCKS**
Rising clamp



TECHNICAL DATA	① PITCH	mm
	② POLES	
	CURRENT	
	VOLTAGE	
	TEST VOLTAGE	
	RECOMMENDED TORQUE	
	WIRE STRIPPING	
	MAX WIRES SECTION	
	OPERATING TEMP.	

5 / 5,08		
2÷3	Modular Modulare	
24A		
250V		
2 kVrms/60s		
0.4÷0.44Nm / 3.5÷3.8in.lbs.		
max 9mm		
2.5mm² 14AWG	4.0mm² 12AWG	2x1.5mm² 2x16AWG
Stranded Flessibile	Solid Rigido	Solid Rigido
-40°C ÷ +105°C		

5 / 5,08		
2÷3	Modular Modulare	
24A		
250V		
2 kVrms/60s		
0.4÷0.44Nm / 3.5÷3.8in.lbs.		
max 9mm		
2.5mm² 14AWG	4.0mm² 12AWG	2x1.5mm² 2x16AWG
Stranded Flessibile	Solid Rigido	Solid Rigido
-40°C ÷ +105°C		

5 / 5,08 (10 / 10,16)		
2÷3 (1÷2)	Modular Modulare	
24A		
250V (750V)		
2 kVrms/60s (3 kVrms/60s)		
0.5÷0.55Nm / 4.5÷4.9in.lbs.		
max 8mm		
2.5mm² 14AWG	4.0mm² 12AWG	2x1.5mm² 2x16AWG
Stranded Flessibile	Solid Rigido	Solid Rigido
-40°C ÷ +130°C		

APPROVAL DATA	APPROVALS			
	CURRENT	-	-	-
	VOLTAGE	-	-	-
	WIRE SECTION	-	-	-
	TORQUE	-	-	-
	FILE	-	-	-

EN60998	EN60998	UL1059 C22-2 N°158
-	-	-
-	-	-
-	-	-
-	-	-

EN60998	EN60998	UL1059 C22-2 N°158
-	-	-
-	-	-
-	-	-
-	-	-

EN60998	EN60998	UL1059 C22-2 N°158
-	-	24A factory 20A field
-	-	300V
-	-	12÷30AWG
-	-	4.5Lb-in
-	-	E178356

MATERIALS	HOUSING	PA - UL 94 V0	
	SCREW	M2.5	Galvanized steel Acciaio zincato
	CLAMP	Cr3 Plated steel / Acciaio cromato	
	TERMINAL	Tin-plated copper alloy / Lega di rame stagnata	

PA - UL 94 V0			
M2.5	Captive Imperdibile	Galvanized steel Acciaio zincato	
Cr3 Plated steel / Acciaio cromato			
Tin-plated copper alloy / Lega di rame stagnata			

PA - UL 94 V0			
M2.5	Captive Imperdibile	Galvanized steel Acciaio zincato	
Cr3 Plated steel / Acciaio cromato			
Tin-plated copper alloy / Lega di rame stagnata			

PA - UL 94 V0			
M3	Captive Imperdibile	Galvanized steel Acciaio zincato	
Nickel copper alloy / Lega di rame nichelata			
Tin-plated copper alloy / Lega di rame stagnata			

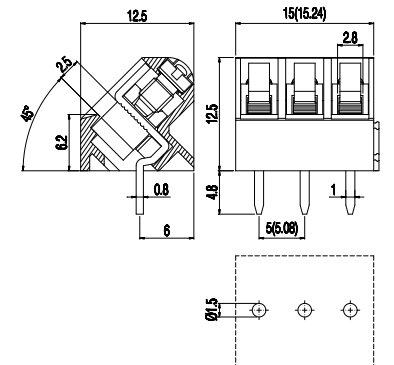
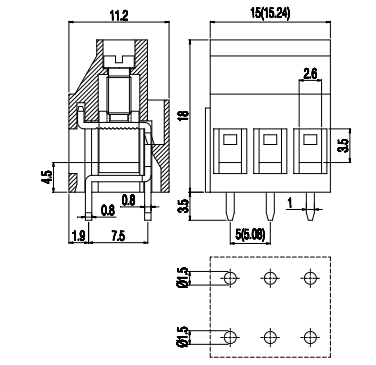
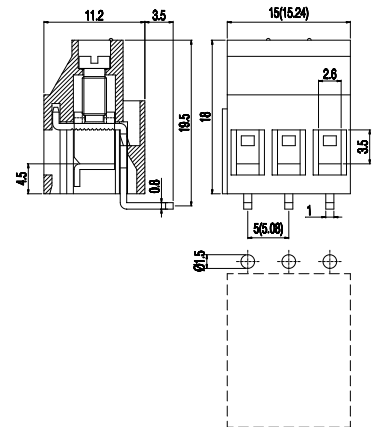
HOW TO ORDER	Series Serie	Poles Poli	Pitch Passo	Version Versione (*)
* Custom code (assigned by euroclamp)	MVST25	2÷N	5 / 5,08	H - *
COLOURS	Standard	On request / Su richiesta		
# To be specified just in case it is different from the standard	GN	GN	GY	BK
		BL	RD	YL
		OG		

Series Serie	Poles Poli	Pitch Passo	Version Versione (*)
MVST25	2÷N	5 / 5,08	W - *
Standard	On request / Su richiesta		
GN	GN	GY	BK
	BL	RD	YL
	OG		

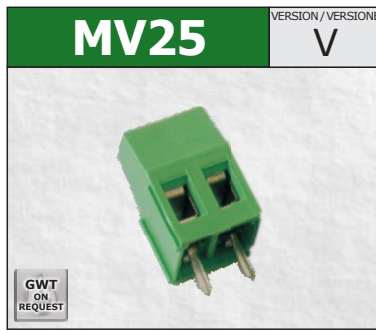
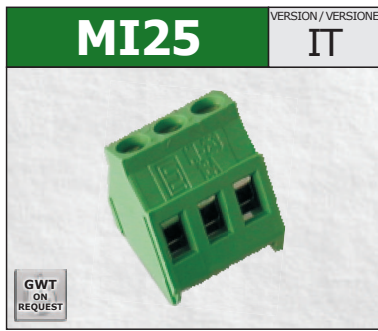
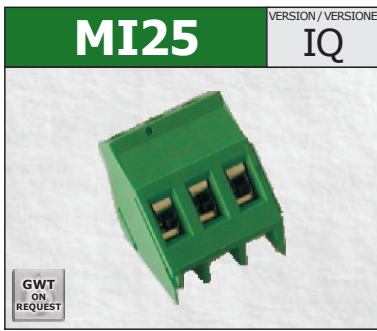
Series Serie	Poles Poli	Pitch Passo	Version Versione (*)
MIP25	2÷N	5 / 5,08	IQ - * - #
Standard	On request / Su richiesta		
GN	GN	GY	BK
	BL	RD	YL
	OG		

Series Serie	Poles Poli	Pitch Passo	Version Versione (*)	Colour Colore
MIP25	2÷N	5 / 5,08	IQ - * - #	#
Standard	On request / Su richiesta			
GN	GN	GY	BK	BL
	RD	YL	OG	

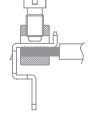
NOTE
① Products of pitches 10 / 10,16 are configurations with metal parts removed from alternating poles to increase spacings;
② Configurations of higher number of poles are obtainable composing modular versions. In order to avoid interference mounting, the terminal row should be interrupted when the number of positions exceeds 30.



Version with antirotation pegs is available on 2 poles connections.
Disponibile per connessioni a 2 poli versioni con perni antitorzione.



MORSETTIERE
MONOPIANO
Carrello



5 / 5,08 (10 / 10,16)	
2÷3 (1÷2)	Modular Modulare
16A	
450V (750V)	
2,5 kVrms/60s (3 kVrms/60s)	
0.5÷0.55Nm / 4.5÷4.9in.lbs.	
max 8mm	
2.5mm ² 14AWG Stranded Flessibile	4.0mm ² 12AWG Solid Rigido
2x1.5mm ² 2x16AWG Solid Rigido	
-40°C ÷ +130°C	

5,08 (10,16)	
2÷3 (1÷2)	Modular Modulare
16A	
450V (750V)	
2,5 kVrms/60s (3 kVrms/60s)	
0.5÷0.55Nm / 4.5÷4.9in.lbs.	
max 8mm	
2.5mm ² 14AWG Stranded Flessibile	4.0mm ² 12AWG Solid Rigido
2x1.5mm ² 2x16AWG Solid Rigido	
-40°C ÷ +130°C	

5,08 (10,16)	
2/3/4/8 (1/2/4)	Modular Modulare
16A	
450V (750V)	
2,5 kVrms/60s (3 kVrms/60s)	
0.5÷0.55Nm / 4.5÷4.9in.lbs.	
max 8mm	
2.5mm ² 14AWG Stranded Flessibile	4.0mm ² 12AWG Solid Rigido
2x1.5mm ² 2x16AWG Solid Rigido	
-40°C ÷ +130°C	

①	PASSO	mm
②	POLI	
CORRENTE		
TENSIONE		
TENSIONE DI PROVA		
COPPIA CONSIGLIATA		
SPELLATURA CAVO		
CAVI CONNETTIBILI		
TEMP. DI ESERCIZIO		

DATI TECNICI

EN60998	EN60998	UL1059 C22-2 N°158
16A	16A	16A factory 15A field
450V (750V)	450V (750V)	300V
2.5mm ²	2.5mm ²	14÷30AWG
0.5Nm	0.5Nm	4.5Lb-in
EP149	N.40023956	E178356

EN60998	EN60998	UL1059 C22-2 N°158
16A	16A	16A factory 15A field
450V (750V)	450V (750V)	300V
2.5mm ²	2.5mm ²	14÷30AWG
0.5Nm	0.5Nm	4.5Lb-in
EP149	N.40023956	E178356

EN60998	EN60998	UL1059 C22-2 N°158
16A	16A	16A factory 15A field
450V (750V)	450V (750V)	300V
2.5mm ²	2.5mm ²	14÷30AWG
0.5Nm	0.5Nm	4.5Lb-in
EP149	N.40023956	E178356

OMOLOGAZIONI	
CORRENTE	
TENSIONE	
SEZIONE CONDUTTORE	
COPPIA	
FILE	

DATI DI OMOLOGAZIONE

PA - UL 94 V0	
M3	Galvanized steel Acciaio zincato
Nickel copper alloy / Lega di rame nichelata	
Tin-plated copper alloy / Lega di rame stagnata	

PA - UL 94 V0	
M3	Galvanized steel Acciaio zincato
Nickel copper alloy / Lega di rame nichelata	
Tin-plated copper alloy / Lega di rame stagnata	

PA - UL 94 V0	
M3	Galvanized steel Acciaio zincato
Nickel copper alloy / Lega di rame nichelata	
Tin-plated copper alloy / Lega di rame stagnata	

CORPO ISOLANTE	
VITE	
MORSETTO	
TERMINALE	

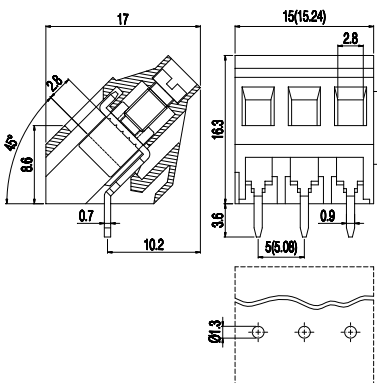
MATERIALI

Series Serie	Poles Poli	Pitch Passo	Version Versione (*)	Colour Colore
MI25	2÷N	5/5,08	- IQ - *	- #
MI25	1÷N	10/10,16	- IQ - *	- #
Standard		On request / Su richiesta		
GN	GY BK BL RD YL OG			

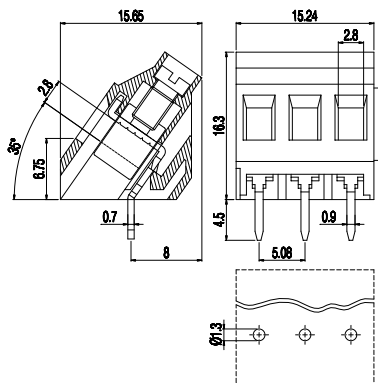
Series Serie	Poles Poli	Pitch Passo	Version Versione (*)	Colour Colore
MI25	2÷N	5,08	- IT - *	- #
MI25	1÷N	10,16	- IT - *	- #
Standard		On request / Su richiesta		
GN	GY BK BL RD YL OG			

Series Serie	Poles Poli	Pitch Passo	Version Versione (*)	Colour Colore
MV25	2÷N	5,08	- V - *	- #
MV25	1÷N	10,16	- V - *	- #
Standard		On request / Su richiesta		
GN	GY BK BL RD OG			

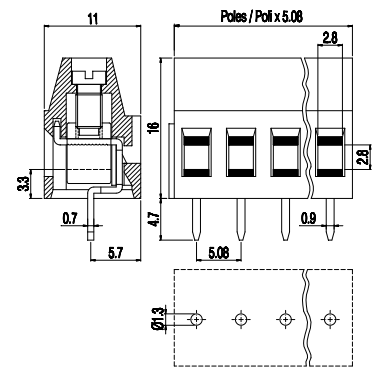
COME ORDINARE	
* Codice personalizzazione (definito da euroclamp)	
COLORI	
# Specificare solo se diverso dallo standard	



Version with antirotation pegs is available on 2 poles connections. Disponibile per connessioni a 2 poli versioni con perni antitorzione.



Version with antirotation pegs is available on 2 poles connections. Disponibile per connessioni a 2 poli versioni con perni antitorzione.

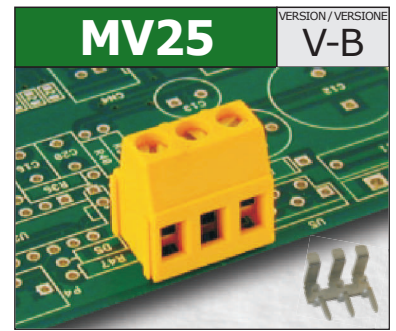
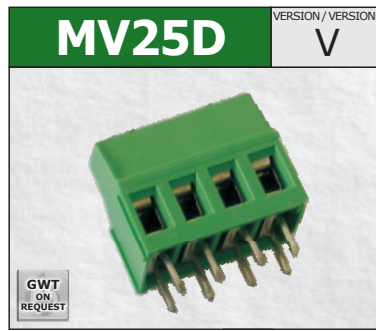
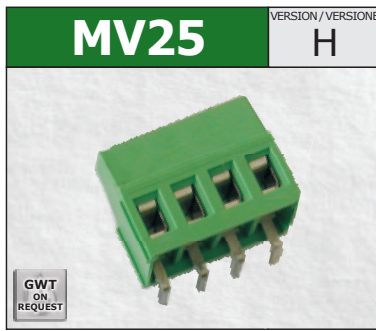
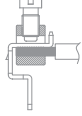


Version with antirotation pegs is available on 2 poles connections. Disponibile per connessioni a 2 poli versioni con perni antitorzione.

NOTE	
①	I prodotti a passo 10 / 10,16 sono configurazioni con componenti metallici rimossi da poli alterni per aumentarne le distanze;
②	Configurazioni con un numero maggiore di poli sono ottenibili componendo le versioni modulari. Per evitare interferenze di montaggio occorre prevedere un'interruzione della morsetteria quando il numero dei poli è superiore a 30.



**SINGLE DECK
TERMINAL BLOCKS**
Rising clamp



TECHNICAL DATA	① PITCH	mm
	② POLES	
	CURRENT	
	VOLTAGE	
	TEST VOLTAGE	
	RECOMMENDED TORQUE	
	WIRE STRIPPING	
	MAX WIRES SECTION	
	OPERATING TEMP.	

5,08 (10,16)		
2/3/4/8 (1/2/4)	Modular Modulare	
16A		
450V (750V)		
2,5 kVrms/60s (3 kVrms/60s)		
0.5÷0.55Nm / 4.5÷4.9in.lbs.		
max 8mm		
2.5mm² 14AWG Stranded Flessibile	4.0mm² 12AWG Solid Rigido	2x1.5mm² 2x16AWG Solid Rigido
-40°C ÷ +130°C		

5,08 (10,16)		
2/3/4/8 (1/2/4)	Modular Modulare	
24A		
250V (750V)		
2 kVrms/60s (3 kVrms/60s)		
0.8÷0.88Nm / 7.2÷7.9in.lbs.		
max 8mm		
2.5mm² 14AWG Stranded Flessibile	4.0mm² 12AWG Solid Rigido	2x1.5mm² 2x16AWG Solid Rigido
-40°C ÷ +130°C		

5,08		
2÷3	Modular Modulare	
16A		
-		
-		
0.5÷0.55Nm / 4.5÷4.9in.lbs.		
max 8mm		
2.5mm² 14AWG Stranded Flessibile	4.0mm² 12AWG Solid Rigido	2x1.5mm² 2x16AWG Solid Rigido
-40°C ÷ +130°C		

APPROVAL DATA	APPROVALS			
	CURRENT	16A	16A	16A factory 15A field
	VOLTAGE	450V (750V)	450V (750V)	300V
	WIRE SECTION	2.5mm ²	2.5mm ²	14÷30AWG
	TORQUE	0.5Nm	0.5Nm	4.5Lb-in
	FILE	EP149	N.40023956	E178356

EN60998	EN60998	UL1059 C22-2 N°158
16A	16A	16A factory 15A field
450V (750V)	450V (750V)	300V
2.5mm ²	2.5mm ²	14÷30AWG
0.5Nm	0.5Nm	4.5Lb-in
EP149	N.40023956	E178356

EN60998	EN60998	UL1059 C22-2 N°158
24A	-	18A factory 15A field
250V (750V)	-	300V
2.5mm ²	-	14÷30AWG
0.8Nm	-	4.5Lb-in
CA02.00599	-	E178356

EN60998	EN60998	UL1059 C22-2 N°158
-	-	-
-	-	-
-	-	-
-	-	-
-	-	-

MATERIALS	HOUSING	PA - UL 94 V0		
	SCREW	M3	Galvanized steel Acciaio zincato	
	CLAMP	Nickel copper alloy / Lega di rame nichelata		
	TERMINAL	Tin-plated copper alloy / Lega di rame stagnata		

PA - UL 94 V0				
M3	Galvanized steel Acciaio zincato			
Nickel copper alloy / Lega di rame nichelata				
Tin-plated copper alloy / Lega di rame stagnata				

PA - UL 94 V0				
M3	Galvanized steel Acciaio zincato			
Nickel copper alloy / Lega di rame nichelata				
Tin-plated copper alloy / Lega di rame stagnata				

PA - UL 94 V0				
M3	Galvanized steel Acciaio zincato			
Nickel copper alloy / Lega di rame nichelata				
Tin-plated copper alloy / Lega di rame stagnata				

HOW TO ORDER
* Custom code (assigned by euroclamp)
COLOURS
To be specified just in case it is different from the standard

Series Serie	Poles Poli	Pitch Passo	Version Versione (*)	Colour Colore
MV25	2÷N	5,08	H	- * - #
MV25	1÷N	10,16	H	- * - #
Standard	On request / Su richiesta			

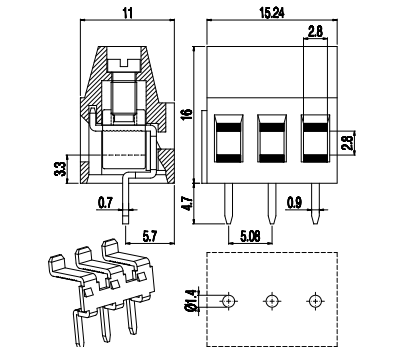
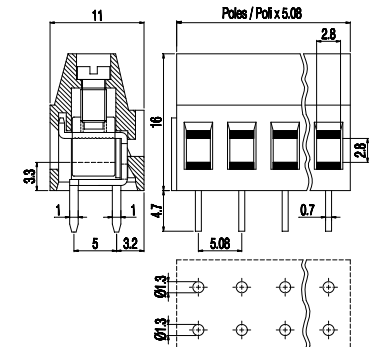
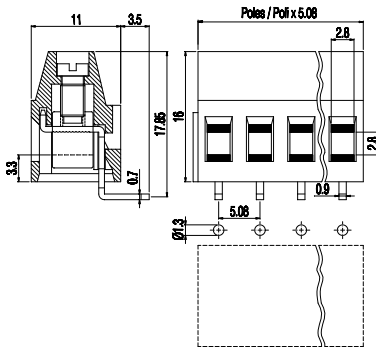
Series Serie	Poles Poli	Pitch Passo	Version Versione (*)	Colour Colore
MV25D	2÷N	5,08	V	- * - #
MV25D	1÷N	10,16	V	- * - #
Standard	On request / Su richiesta			

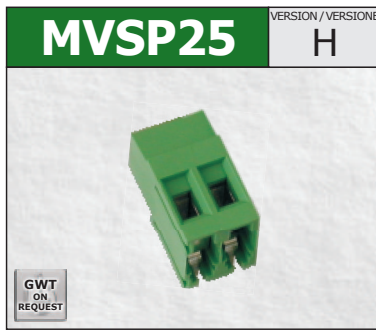
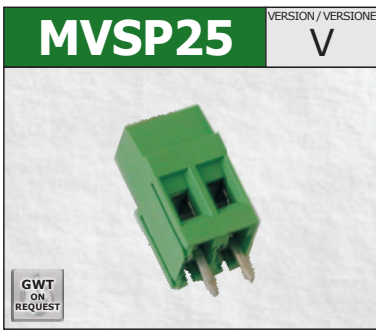
Series Serie	Poles Poli	Pitch Passo	Version Versione (*)	Colour Colore
MV25	2÷3	5,08	V-B	- * - #
Standard	On request / Su richiesta			

NOTE

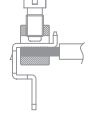
① Products of pitches 10,16 are configurations with metal parts removed from alternating poles to increase spacings;

② Configurations of higher number of poles are obtainable composing modular versions. In order to avoid interference mounting, the terminal row should be interrupted when the number of positions exceeds 30.





**MORSETTIERE
MONOPIANO**
Carrello



5,08 (10,16)	
2÷3 (1÷2)	Modular Modulare
24A	
450V (750V)	
2,5 kVrms/60s (3 kVrms/60s)	
0.8÷0.88Nm / 7.2÷7.9in.lbs.	
max 9.5mm	
2.5mm ² 14AWG Stranded Flessibile	4.0mm ² 12AWG Solid Rigido
-40°C ÷ +130°C	

5,08 (10,16)	
2÷3 (1÷2)	Modular Modulare
24A	
450V (750V)	
2,5 kVrms/60s (3 kVrms/60s)	
0.8÷0.88Nm / 7.2÷7.9in.lbs.	
max 9.5mm	
2.5mm ² 14AWG Stranded Flessibile	4.0mm ² 12AWG Solid Rigido
-40°C ÷ +130°C	

5,08 (10,16)	
2÷3 (1÷2)	Modular Modulare
24A	
450V (750V)	
2,5 kVrms/60s (3 kVrms/60s)	
0.8÷0.88Nm / 7.2÷7.9in.lbs.	
max 8.5mm	
2.5mm ² 14AWG Stranded Flessibile	4.0mm ² 12AWG Solid Rigido
-40°C ÷ +130°C	

①	PASSO	mm
②	POLI	
CORRENTE		
TENSIONE		
TENSIONE DI PROVA		
COPPIA CONSIGLIATA		
SPELLATURA CAVO		
CAVI CONNETTIBILI		
TEMP. DI ESERCIZIO		

EN60998	EN60998	UL1059 C22-2 N°158
24A	-	18A factory 15A field
450V (750V)	-	300V (600V)
2.5mm ²	-	14÷30AWG
0.8Nm	-	4.5Lb-in
CA02.00599	-	E178356

EN60998	EN60998	UL1059 C22-2 N°158
24A	-	18A factory 15A field
450V (750V)	-	300V
2.5mm ²	-	14÷30AWG
0.8Nm	-	4.5Lb-in
CA02.00599	-	E178356

EN60998	EN60998	UL1059 C22-2 N°158
24A	-	PENDING / IN CORSO
450V (750V)	-	
2.5mm ²	-	
0.8Nm	-	
CA02.00599	-	

OMOLOGAZIONI	
CORRENTE	
TENSIONE	
SEZIONE CONDUTTORE	
COPPIA	
FILE	

PA - UL 94 V0	
M3	Galvanized steel Acciaio zincato
Nickel copper alloy / Lega di rame nichelata	
Tin-plated copper alloy / Lega di rame stagnata	

PA - UL 94 V0	
M3	Galvanized steel Acciaio zincato
Nickel copper alloy / Lega di rame nichelata	
Tin-plated copper alloy / Lega di rame stagnata	

PA - UL 94 V0	
M3	Galvanized steel Acciaio zincato
Nickel copper alloy / Lega di rame nichelata	
Tin-plated copper alloy / Lega di rame stagnata	

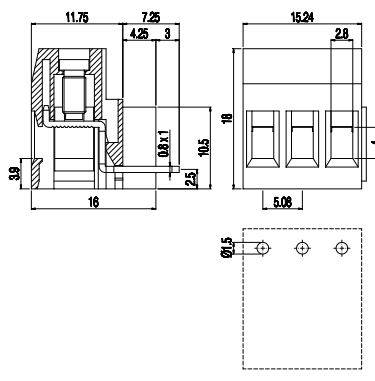
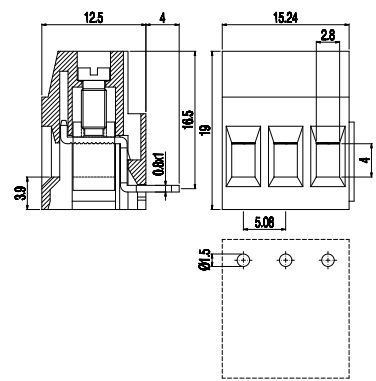
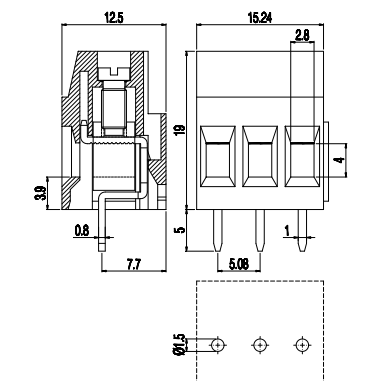
CORPO ISOLANTE	
VITE	
MORSETTO	
TERMINALE	

Series Serie	Poles Poli	Pitch Passo	Version Versione (*)	Colour Colore
MVSP25	2÷N	5,08	V	* - #
MVSP25	1÷N	10,16	V	* - #
Standard	On request / Su richiesta			
GN	GY	BK	BL	RD YL OG

Series Serie	Poles Poli	Pitch Passo	Version Versione (*)	Colour Colore
MVSP25	2÷N	5,08	H	* - #
MVSP25	1÷N	10,16	H	* - #
Standard	On request / Su richiesta			
GN	GY	BK	BL	RD YL OG

Series Serie	Poles Poli	Pitch Passo	Version Versione (*)	Colour Colore
MVS25	2÷N	5,08	HS	* - #
MVS25	1÷N	10,16	HS	* - #
Standard	On request / Su richiesta			
GN	GY	BK	BL	RD YL OG

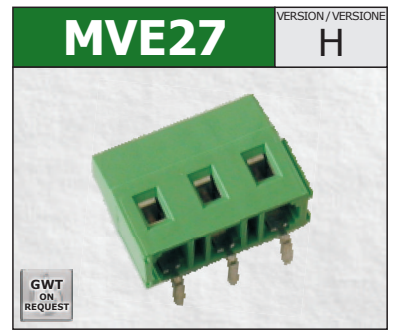
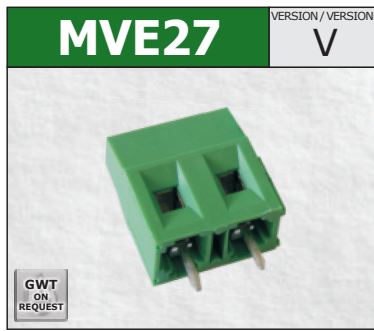
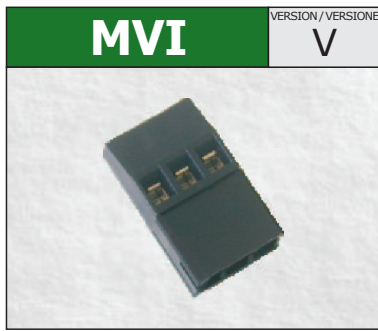
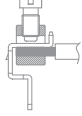
COME ORDINARE	
* Codice personalizzazione (definito da euroclamp)	
COLORI	
# Specificare solo se diverso dallo standard	



NOTE	
①	I prodotti a passo 10,16 sono configurazioni con componenti metallici rimossi da poli alterni per aumentarne le distanze;
②	Configurazioni con un numero maggiore di poli sono ottenibili componendo le versioni modulari. Per evitare interferenze di montaggio occorre prevedere un'interruzione della morsetteria quando il numero dei poli è superiore a 30.



**SINGLE DECK
TERMINAL BLOCKS**
Rising clamp



TECHNICAL DATA	① PITCH	mm
	② POLES	
	CURRENT	
	VOLTAGE	
	TEST VOLTAGE	
	RECOMMENDED TORQUE	
	WIRE STRIPPING	
	MAX WIRES SECTION	
	OPERATING TEMP.	

6,35 (12,7)		
2÷3 (1÷2)	Modular Modulare	
25A		
450V (750V)		
2,5 kVrms/60s (3 kVrms/60s)		
0.5÷0.55Nm / 4.5÷4.9in.lbs.		
max 10mm		
4.0mm² 12AWG Stranded Flessibile	6.0mm² 10AWG Solid Rigido	2x2.5mm² 2x14AWG Solid Rigido
-40°C ÷ +130°C		

7,5 (15)		
2÷3 (1÷2)	Modular Modulare	
16A		
750V		
3 kVrms/60s		
0.5÷0.55Nm / 4.5÷4.9in.lbs.		
max 7mm		
2.5mm² 14AWG Stranded Flessibile	4.0mm² 12AWG Solid Rigido	2x1.5mm² 2x16AWG Solid Rigido
-40°C ÷ +130°C		

7,5 (15)		
2÷3 (1÷2)	Modular Modulare	
16A		
750V		
3 kVrms/60s		
0.5÷0.55Nm / 4.5÷4.9in.lbs.		
max 7mm		
2.5mm² 14AWG Stranded Flessibile	4.0mm² 12AWG Solid Rigido	2x1.5mm² 2x16AWG Solid Rigido
-40°C ÷ +130°C		

APPROVAL DATA	APPROVALS		
	CURRENT	-	25A factory 20A field
	VOLTAGE	-	300V (600V)
	WIRE SECTION	-	12÷30AWG
	TORQUE	-	4.5Lb-in
	FILE	-	E178356

EN60998	EN60998	UL1059 C22-2 N°158
-	-	25A factory 20A field
-	-	300V (600V)
-	-	12÷30AWG
-	-	4.5Lb-in
-	-	E178356

EN60998	EN60998	UL1059 C22-2 N°158
16A	16A	16A factory 15A field
750V	750V	300V
2.5mm ²	2.5mm ²	14÷30AWG
0.5Nm	0.5Nm	4.5Lb-in
EP149	N.40023956	E178356

EN60998	EN60998	UL1059 C22-2 N°158
16A	16A	16A factory 15A field
750V	750V	300V
2.5mm ²	2.5mm ²	14÷30AWG
0.5Nm	0.5Nm	4.5Lb-in
EP149	N.40023956	E178356

MATERIALS	HOUSING	PA - UL 94 V0	
	SCREW	M3	Galvanized steel Acciaio zincato
	CLAMP	Nickel copper alloy / Lega di rame nichelata	
	TERMINAL	Nickel copper alloy / Lega di rame nichelata	

HOUSING	PA - UL 94 V0	
SCREW	M3	Galvanized steel Acciaio zincato
CLAMP	Nickel copper alloy / Lega di rame nichelata	
TERMINAL	Nickel copper alloy / Lega di rame nichelata	

HOUSING	PA - UL 94 V0	
SCREW	M3	Galvanized steel Acciaio zincato
CLAMP	Nickel copper alloy / Lega di rame nichelata	
TERMINAL	Tin-plated copper alloy / Lega di rame stagnata	

HOUSING	PA - UL 94 V0	
SCREW	M3	Galvanized steel Acciaio zincato
CLAMP	Nickel copper alloy / Lega di rame nichelata	
TERMINAL	Tin-plated copper alloy / Lega di rame stagnata	

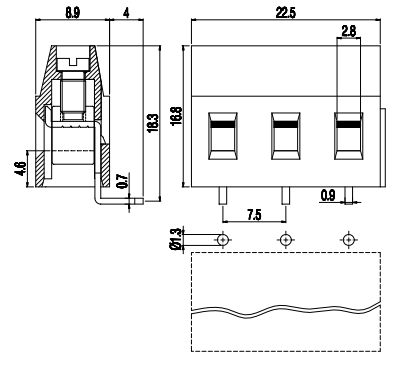
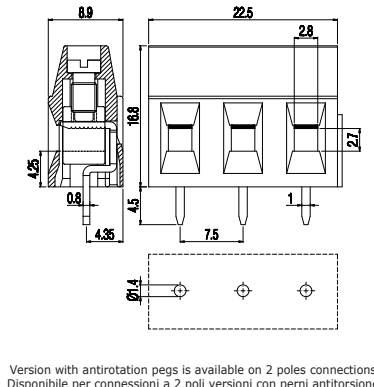
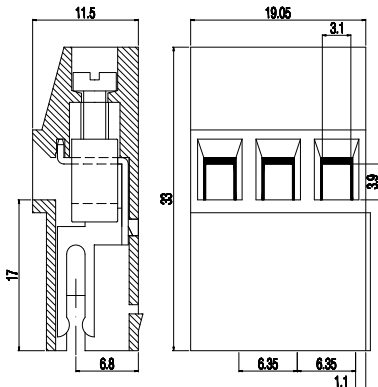
HOW TO ORDER	Series Serie	Poles Poli	Pitch Passo	Version Versione (*)	Colour Colore
	MVI	2÷N	6,35	V	*
	MVI	1÷N	12,7	V	*
* Custom code (assigned by euroclamp)					
COLOURS	Standard	On request / Su richiesta			
# To be specified just in case it is different from the standard	BK	GN	GY	BL	RD

Series Serie	Poles Poli	Pitch Passo	Version Versione (*)	Colour Colore
MVE27	2÷N	7,5	V	*
MVE27	1÷N	15	V	*
Standard	On request / Su richiesta			
GN	GY	BK	BL	RD

Series Serie	Poles Poli	Pitch Passo	Version Versione (*)	Colour Colore
MVE27	2÷N	7,5	H	*
MVE27	1÷N	15	H	*
Standard	On request / Su richiesta			
GN	GY	BK	BL	RD

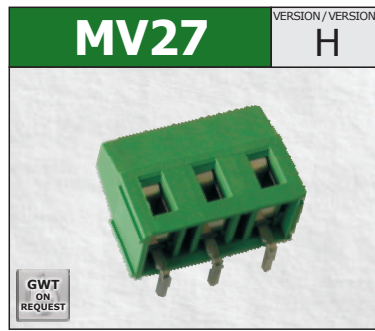
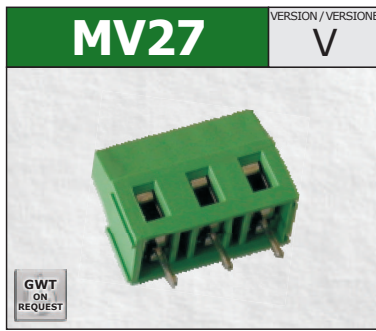
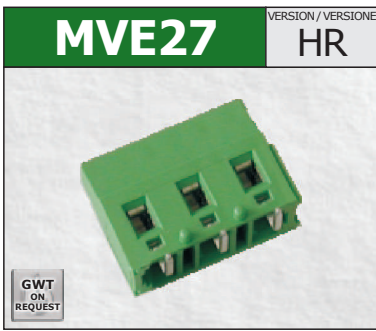
Series Serie	Poles Poli	Pitch Passo	Version Versione (*)	Colour Colore
MVE27	2÷N	7,5	H	*
MVE27	1÷N	15	H	*
Standard	On request / Su richiesta			
GN	GY	BK	BL	RD

NOTE
① Products of pitches 12,7 / 15 are configurations with metal parts removed from alternating poles to increase spacings;
② Configurations of higher number of poles are obtainable composing modular versions. In order to avoid interference mounting, the terminal row should be interrupted when the number of positions exceeds 30.

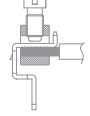


Version with antirotation pegs is available on 2 poles connections.
Disponibile per connessioni a 2 poli versioni con perni antitorione.

APPLICATION: Terminal block MST410
APPLICAZIONE: Morsettiere MST410



MORSETTIERE MONOPIANO
Carrello



7,5 (15)	
2÷3 (1÷2)	Modular Modulare
16A	
750V	
2,5 kVrms/60s (3 kVrms/60s)	
0.5÷0.55Nm / 4.5÷4.9in.lbs.	
max 7mm	
2.5mm² Stranded 14AWG Flessibile	4.0mm² Solid 12AWG Rigido
2x1.5mm² Solid 2x16AWG Rigido	
-40°C ÷ +130°C	

7,5 (15)	
2÷3 (1÷2)	Modular Modulare
16A	
750V	
3 kVrms/60s	
0.5÷0.55Nm / 4.5÷4.9in.lbs.	
max 8mm	
2.5mm² Stranded 14AWG Flessibile	4.0mm² Solid 12AWG Rigido
2x1.5mm² Solid 2x16AWG Rigido	
-40°C ÷ +130°C	

7,5 (15)	
2÷3 (1÷2)	Modular Modulare
16A	
750V	
3 kVrms/60s	
0.5÷0.55Nm / 4.5÷4.9in.lbs.	
max 8mm	
2.5mm² Stranded 14AWG Flessibile	4.0mm² Solid 12AWG Rigido
2x1.5mm² Solid 2x16AWG Rigido	
-40°C ÷ +130°C	

①	PASSO	mm
②	POLI	
CORRENTE		
TENSIONE		
TENSIONE DI PROVA		
COPPIA CONSIGLIATA		
SPELLATURA CAVO		
CAVI CONNETTIBILI		
TEMP. DI ESERCIZIO		

DATI TECNICI

EN60998	EN60998	UL1059 C22-2 N°158
16A	16A	16A factory 15A field
750V	750V	300V
2.5mm ²	2.5mm ²	14÷30AWG
0.5Nm	0.5Nm	4.5Lb-in
EP149	N.40023956	E178356

EN60998	EN60998	UL1059 C22-2 N°158
16A	16A	16A factory 15A field
750V	750V	300V
2.5mm ²	2.5mm ²	14÷30AWG
0.5Nm	0.5Nm	4.5Lb-in
EP149	N.40023956	E178356

EN60998	EN60998	UL1059 C22-2 N°158
16A	16A	16A factory 15A field
750V	750V	300V
2.5mm ²	2.5mm ²	14÷30AWG
0.5Nm	0.5Nm	4.5Lb-in
EP149	N.40023956	E178356

OMOLOGAZIONI	
CORRENTE	
TENSIONE	
SEZIONE CONDUTTORE	
COPPIA	
FILE	

DATI DI OMOLOGAZIONE

PA - UL 94 V0	
M3	Galvanized steel Acciaio zincato
Nickel copper alloy / Lega di rame nichelata	
Tin-plated copper alloy / Lega di rame stagnata	

PA - UL 94 V0	
M3	Galvanized steel Acciaio zincato
Nickel copper alloy / Lega di rame nichelata	
Tin-plated copper alloy / Lega di rame stagnata	

PA - UL 94 V0	
M3	Galvanized steel Acciaio zincato
Nickel copper alloy / Lega di rame nichelata	
Tin-plated copper alloy / Lega di rame stagnata	

CORPO ISOLANTE	
VITE	
MORSETTO	
TERMINALE	

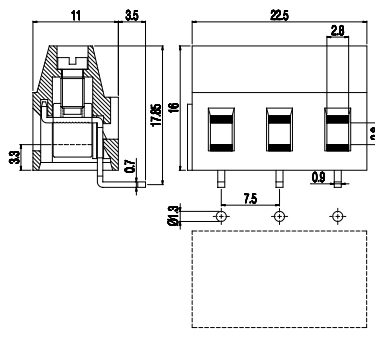
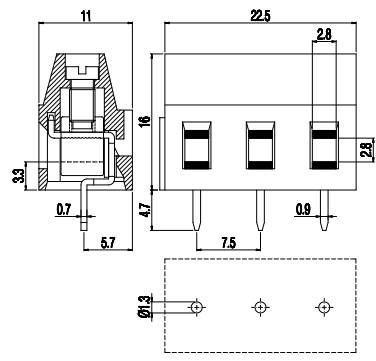
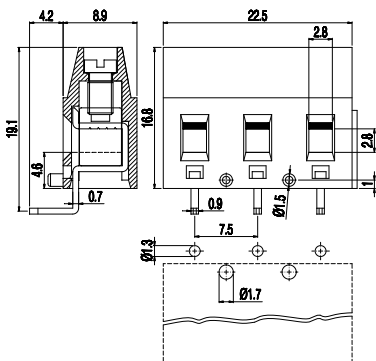
MATERIALI

Series Serie	Poles Poli	Pitch Passo	Version Versione	(*)	Colour Colore
MVE27	2÷N	7,5	HR	*	#
MVE27	1÷N	15	HR	*	#
Standard	On request / Su richiesta				
GN	GY	BK	BL	RD	YL OG

Series Serie	Poles Poli	Pitch Passo	Version Versione	(*)	Colour Colore
MV27	2÷N	7,5	V	*	#
MV27	1÷N	15	V	*	#
Standard	On request / Su richiesta				
GN	GY	BK	BL	RD	YL OG

Series Serie	Poles Poli	Pitch Passo	Version Versione	(*)	Colour Colore
MV27	2÷N	7,5	H	*	#
MV27	1÷N	15	H	*	#
Standard	On request / Su richiesta				
GN	GY	BK	BL	RD	YL OG

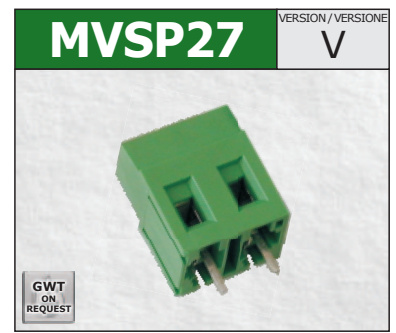
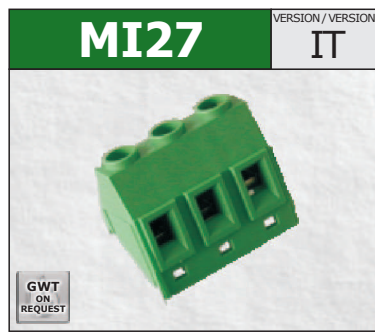
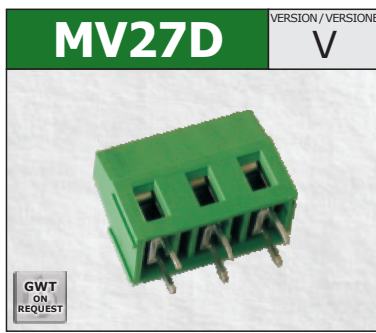
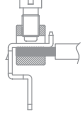
COME ORDINARE	
* Codice personalizzazione (definito da euroclamp)	
COLORI	
# Specificare solo se diverso dallo standard	



NOTE	
①	I prodotti a passo 12,17 / 15 sono configurazioni con componenti metallici rimossi da poli alterni per aumentarne le distanze;
②	Configurazioni con un numero maggiore di poli sono ottenibili componendo le versioni modulari. Per evitare interferenze di montaggio occorre prevedere un'interruzione della morsetteria quando il numero dei poli è superiore a 30.



**SINGLE DECK
TERMINAL BLOCKS**
Rising clamp



TECHNICAL DATA	① PITCH	mm
	② POLES	
	CURRENT	
	VOLTAGE	
	TEST VOLTAGE	
	RECOMMENDED TORQUE	
	WIRE STRIPPING	
	MAX WIRES SECTION	
	OPERATING TEMP.	

7,5 (15)		
2÷3 (1÷2)	Modular Modulare	
24A		
750V		
3 kVrms/60s		
0.8÷0.88Nm / 7.2÷7.9in.lbs.		
max 8mm		
2.5mm² 14AWG Stranded Flessibile	4.0mm² 12AWG Solid Rigido	2x1.5mm² 2x16AWG Solid Rigido
-40°C ÷ +130°C		

7,5 (15)		
2÷3 (1÷2)	Modular Modulare	
16A		
750V		
3 kVrms/60s		
0.5÷0.55Nm / 4.5÷4.9in.lbs.		
max 8mm		
2.5mm² 14AWG Stranded Flessibile	4.0mm² 12AWG Solid Rigido	2x1.5mm² 2x16AWG Solid Rigido
-40°C ÷ +130°C		

7,62 (15,24)		
2÷3 (1÷2)	Modular Modulare	
24A		
750V		
3 kVrms/60s		
0.8÷0.88Nm / 7.2÷7.9in.lbs.		
max 9.5mm		
2.5mm² 14AWG Stranded Flessibile	4.0mm² 12AWG Solid Rigido	2x1.5mm² 2x16AWG Solid Rigido
-40°C ÷ +130°C		

APPROVAL DATA	APPROVALS		
	CURRENT	24A	20A factory 15A field
	VOLTAGE	750V	300V (600V)
	WIRE SECTION	2.5mm ²	14÷30AWG
	TORQUE	0.8Nm	4.5Lb-in
	FILE	CA02.00599	E178356

EN60998	EN60998	UL1059 C22-2 N°158
24A	-	20A factory 15A field
750V	-	300V (600V)
2.5mm ²	-	14÷30AWG
0.8Nm	-	4.5Lb-in
CA02.00599	-	E178356

EN60998	EN60998	UL1059 C22-2 N°158
16A	16A	16A factory 15A field
750V	750V	300V
2.5mm ²	2.5mm ²	14÷30AWG
0.5Nm	0.5Nm	4.5Lb-in
EP149	N.40023956	E178356

EN60998	EN60998	UL1059 C22-2 N°158
24A	-	20A factory 15A field
750V	-	300V (600V)
2.5mm ²	-	14÷30AWG
0.8Nm	-	4.5Lb-in
CA02.00599	-	E178356

MATERIALS	HOUSING	PA - UL 94 V0	
	SCREW	M3	Galvanized steel Acciaio zincato
	CLAMP	Nickel copper alloy / Lega di rame nichelata	
	TERMINAL	Tin-plated copper alloy / Lega di rame stagnata	

PA - UL 94 V0	
M3	Galvanized steel Acciaio zincato
Nickel copper alloy / Lega di rame nichelata	
Tin-plated copper alloy / Lega di rame stagnata	

PA - UL 94 V0	
M3	Galvanized steel Acciaio zincato
Nickel copper alloy / Lega di rame nichelata	
Tin-plated copper alloy / Lega di rame stagnata	

PA - UL 94 V0	
M3	Galvanized steel Acciaio zincato
Nickel copper alloy / Lega di rame nichelata	
Tin-plated copper alloy / Lega di rame stagnata	

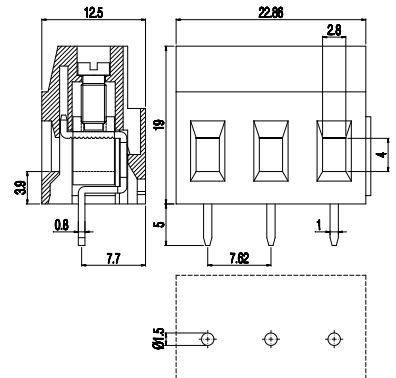
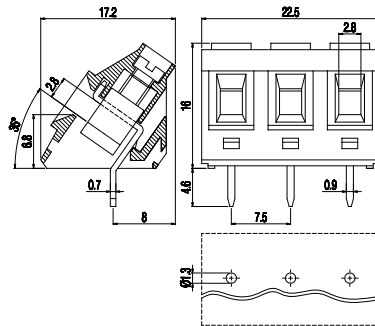
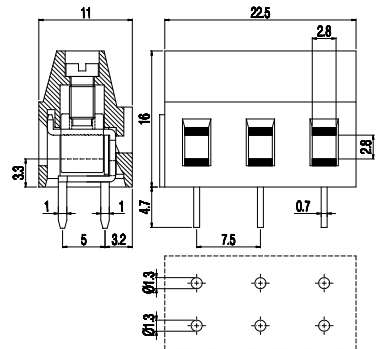
HOW TO ORDER
* Custom code (assigned by euroclamp)
COLOURS
To be specified just in case it is different from the standard

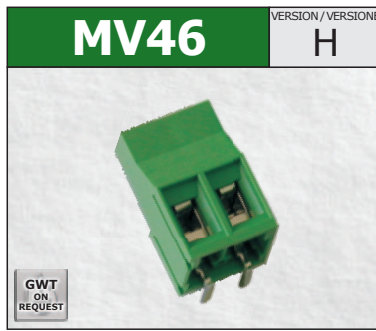
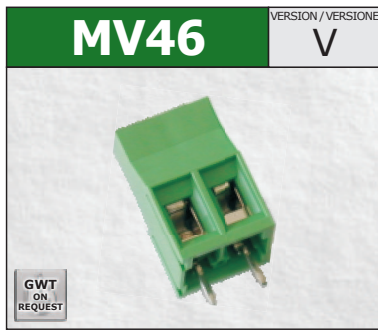
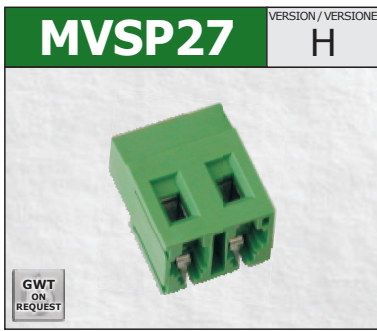
Series Serie	Poles Poli	Pitch Passo	Version Versione (*)	Colour Colore
MV27D	2÷N	7,5	V	*
MV27D	1÷N	15	V	*
Standard	On request / Su richiesta			
GN	GY	BK	BL	RD

Series Serie	Poles Poli	Pitch Passo	Version Versione (*)	Colour Colore
MI27	2÷N	7,5	IT	*
MI27	1÷N	15	IT	*
Standard	On request / Su richiesta			
GN	GY	BK	BL	RD

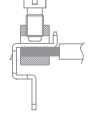
Series Serie	Poles Poli	Pitch Passo	Version Versione (*)	Colour Colore
MVSP27	2÷N	7,62	V	*
MVSP27	1÷N	15,24	V	*
Standard	On request / Su richiesta			
GN	GY	BK	BL	RD

NOTE
① Products of pitches 12,7 / 15 / 15,24 are configurations with metal parts removed from alternating poles to increase spacings;
② Configurations of higher number of poles are obtainable composing modular versions. In order to avoid interference mounting, the terminal row should be interrupted when the number of positions exceeds 30.





**MORSETTIERE
MONOPIANO**
Carrello



7,62 (15,24)	
2÷3 (1÷2)	Modular Modulare
24A	
750V	
3 kVrms/60s	
0.8÷0.88Nm / 7.2÷7.9in.lbs.	
max 9.5mm	
2.5mm² 14AWG Stranded Flessibile	4.0mm² 12AWG Solid Rigido
2x1.5mm² 2x16AWG Solid Rigido	
-40°C ÷ +130°C	

6,35 (12,7)	
2÷3 (1÷2)	Modular Modulare
32A	
450V (750V)	
2,5 kVrms/60s (3 kVrms/60s)	
0.8÷0.88Nm / 7.2÷7.9in.lbs.	
max 9mm	
6.0mm² 10AWG Stranded Flessibile	6.0mm² 10AWG Solid Rigido
2x2.5mm² 2x14AWG Solid Rigido	
-40°C ÷ +130°C	

6,35 (12,7)	
2÷3 (1÷2)	Modular Modulare
32A	
450V (750V)	
2,5 kVrms/60s (3 kVrms/60s)	
0.8÷0.88Nm / 7.2÷7.9in.lbs.	
max 9mm	
6.0mm² 10AWG Stranded Flessibile	6.0mm² 10AWG Solid Rigido
2x2.5mm² 2x14AWG Solid Rigido	
-40°C ÷ +130°C	

①	PASSO	mm
②	POLI	
CORRENTE		
TENSIONE		
TENSIONE DI PROVA		
COPPIA CONSIGLIATA		
SPELLATURA CAVO		
CAVI CONNETTIBILI		
TEMP. DI ESERCIZIO		

EN60998	EN60998	UL1059 C22-2 N°158
24A	-	20A factory 15A field
750V	-	300V (600V)
2.5mm ²	-	14÷30AWG
0.8Nm	-	4.5Lb-in
CA02.00599	-	E178356

EN60998	EN60998	UL1059 C22-2 N°158
32A	25A	30A factory 30A field
450V (750V)	450V (750V)	300V (600V)
6.0mm ²	4.0mm ²	10÷30AWG
0.8Nm	0.5Nm	7.2Lb-in
EP150	N.40014734	E178356

EN60998	EN60998	UL1059 C22-2 N°158
32A	25A	30A factory 30A field
450V (750V)	450V (750V)	300V (600V)
6.0mm ²	4.0mm ²	10÷30AWG
0.8Nm	0.5Nm	7.2Lb-in
EP150	N.40014734	E178356

OMOLOGAZIONI	
CORRENTE	
TENSIONE	
SEZIONE CONDUTTORE	
COPPIA	
FILE	

PA - UL 94 V0	
M3	Galvanized steel Acciaio zincato
Nickel copper alloy / Lega di rame nichelata	
Tin-plated copper alloy / Lega di rame stagnata	

PA - UL 94 V0	
M3	Galvanized steel Acciaio zincato
Nickel copper alloy / Lega di rame nichelata	
Tin-plated copper alloy / Lega di rame stagnata	

PA - UL 94 V0	
M3	Galvanized steel Acciaio zincato
Nickel copper alloy / Lega di rame nichelata	
Tin-plated copper alloy / Lega di rame stagnata	

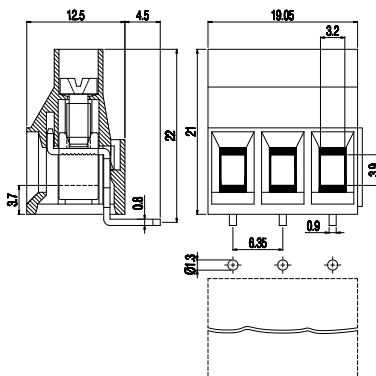
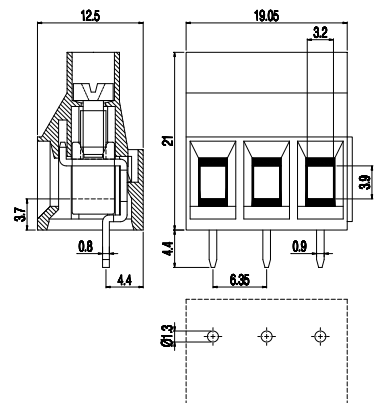
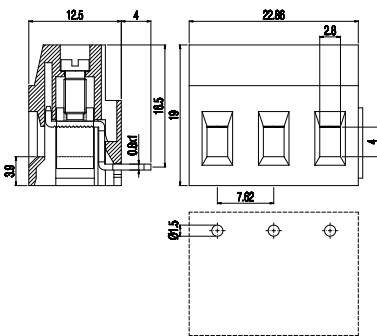
CORPO ISOLANTE	
VITE	
MORSETTO	
TERMINALE	

Series Serie	Poles Poli	Pitch Passo	Version Versione (*)	Colour Colore
MVSP27	2÷N	7,62	H	* - #
MVSP27	1÷N	15,24	H	* - #
Standard	On request / Su richiesta			
GN	GY	BK	BL	RD YL OG

Series Serie	Poles Poli	Pitch Passo	Version Versione (*)	Colour Colore
MV46	2÷N	6,35	V	* - #
MV46	1÷N	12,7	V	* - #
Standard	On request / Su richiesta			
GN	GY	BK	BL	RD YL OG

Series Serie	Poles Poli	Pitch Passo	Version Versione (*)	Colour Colore
MV46	2÷N	6,35	H	* - #
MV46	1÷N	12,7	H	* - #
Standard	On request / Su richiesta			
GN	GY	BK	BL	RD YL OG

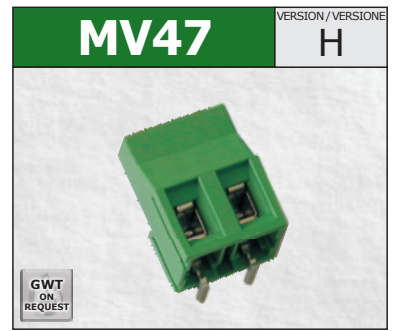
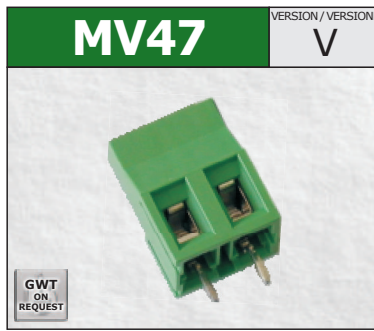
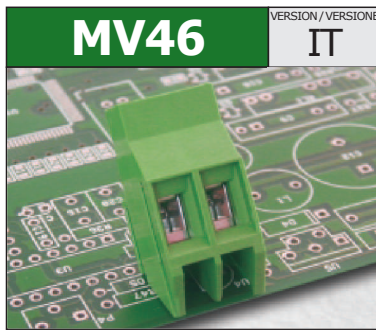
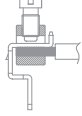
COME ORDINARE	
* Codice personalizzazione (definito da euroclamp)	
COLORI	
# Specificare solo se diverso dallo standard	



NOTE	
①	I prodotti a passo 12,17 / 15 / 15,24 sono configurazioni con componenti metallici rimossi da poli alterni per aumentarne le distanze;
②	Configurazioni con un numero maggiore di poli sono ottenibili componendo le versioni modulari. Per evitare interferenze di montaggio occorre prevedere un'interruzione della morsetteria quando il numero dei poli è superiore a 30.



**SINGLE DECK
TERMINAL BLOCKS**
Rising clamp



TECHNICAL DATA	① PITCH	mm
	② POLES	
	CURRENT	
	VOLTAGE	
	TEST VOLTAGE	
	RECOMMENDED TORQUE	
	WIRE STRIPPING	
	MAX WIRES SECTION	
	OPERATING TEMP.	

6,35 (12,7)		
2÷3 (1÷2)	Modular Modulare	
32A		
450V (750V)		
2,5 kVrms/60s (3 kVrms/60s)		
0.8÷0.88Nm / 7.2÷7.9in.lbs.		
max 9mm		
6.0mm² 10AWG	6.0mm² 10AWG	2x2.5mm² 2x14AWG
Stranded Flessibile	Solid Rigido	Solid Rigido
-40°C ÷ +130°C		

7,62 (15,24)		
2÷3 (1÷2)	Modular Modulare	
32A		
750V		
3 kVrms/60s		
0.8÷0.88Nm / 7.2÷7.9in.lbs.		
max 9mm		
6.0mm² 10AWG	6.0mm² 10AWG	2x2.5mm² 2x14AWG
Stranded Flessibile	Solid Rigido	Solid Rigido
-40°C ÷ +130°C		

7,62 (15,24)		
2÷3 (1÷2)	Modular Modulare	
32A		
750V		
3 kVrms/60s		
0.8÷0.88Nm / 7.2÷7.9in.lbs.		
max 9mm		
6.0mm² 10AWG	6.0mm² 10AWG	2x2.5mm² 2x14AWG
Stranded Flessibile	Solid Rigido	Solid Rigido
-40°C ÷ +130°C		

APPROVAL DATA	APPROVALS			
	CURRENT	-	-	PENDING / IN CORSO
	VOLTAGE	-	-	
	WIRE SECTION	-	-	
	TORQUE	-	-	
	FILE	-	-	

EN60998	EN60998	UL1059 C22-2 N°158
32A	25A	30A factory 30A field
750V	750V	300V (600V)
6.0mm ²	4.0mm ²	10÷30AWG
0.8Nm	0.5Nm	7.2Lb-in
EP150	N.40014734	E178356

EN60998	EN60998	UL1059 C22-2 N°158
32A	25A	30A factory 30A field
750V	750V	300V (600V)
6.0mm ²	4.0mm ²	10÷30AWG
0.8Nm	0.5Nm	7.2Lb-in
EP150	N.40014734	E178356

MATERIALS	HOUSING	PA - UL 94 V0	
	SCREW	M3	Galvanized steel Acciaio zincato
	CLAMP	Nickel copper alloy / Lega di rame nichelata	
	TERMINAL	Tin-plated copper alloy / Lega di rame stagnata	

Series Serie	Poles Poli	Pitch Passo	Version Versione (*)	Colour Colore
MV46	2÷N	6,35	IT	- * - #
MV46	1÷N	12,7	IT	- * - #

Series Serie	Poles Poli	Pitch Passo	Version Versione (*)	Colour Colore
MV47	2÷N	7,62	V	- * - #
MV47	1÷N	15,24	V	- * - #

Series Serie	Poles Poli	Pitch Passo	Version Versione (*)	Colour Colore
MV47	2÷N	7,62	H	- * - #
MV47	1÷N	15,24	H	- * - #

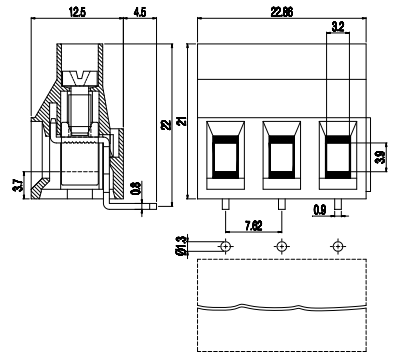
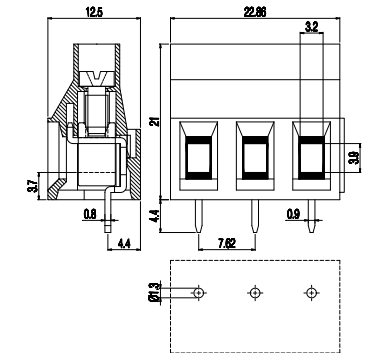
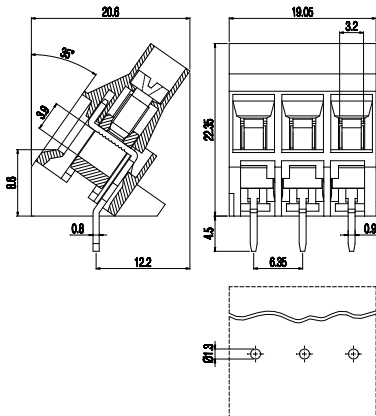
HOW TO ORDER
* Custom code (assigned by euroclamp)
COLOURS
To be specified just in case it is different from the standard

Standard	On request / Su richiesta						
GN	GY	BK	BL	RD	YL	OG	

Standard	On request / Su richiesta						
GN	GY	BK	BL	RD	YL	OG	

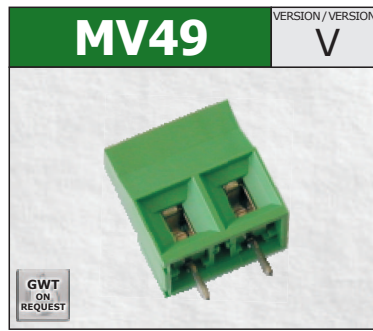
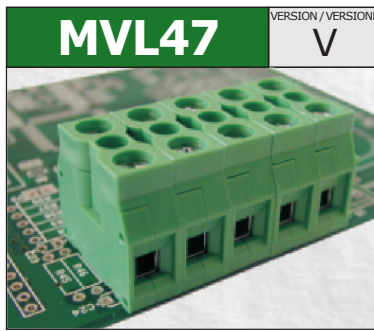
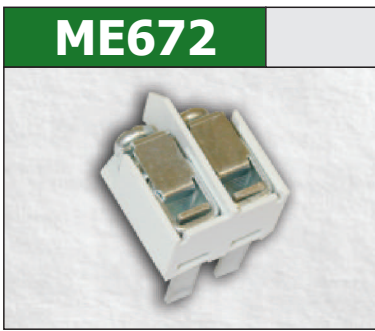
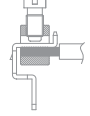
Standard	On request / Su richiesta						
GN	GY	BK	BL	RD	YL	OG	

NOTE
① Products of pitches 12,7 / 15,24 / 19,04 are configurations with metal parts removed from alternating poles to increase spacings;
② Configurations of higher number of poles are obtainable composing modular versions. In order to avoid interference mounting, the terminal row should be interrupted when the number of positions exceeds 30.





**MORSETTIERE
MONOPIANO**
Carrello



7,62		
2	Stackable Liscio	
41A		
450V		
2,5 kVrms/60s		
0.8÷0.88Nm / 7.2÷7.9in.lbs.		
max 8.5mm		
6.0mm ² 10AWG Stranded Flessibile	10mm ² 8AWG Solid Rigido	2x1.5mm ² 2x16AWG Solid Rigido
-40°C ÷ +130°C		

7,5		
1	Modular Modulare	
41A		
750V		
3 kVrms/60s		
0.5÷0.55Nm / 4.5÷4.9in.lbs.		
max 8.5mm		
6.0mm ² 10AWG Stranded Flessibile	6.0mm ² 10AWG Solid Rigido	2x2.5mm ² 2x14AWG Solid Rigido
-40°C ÷ +130°C		

9,52 (19,04)		
2÷3 (1÷2)	Modular Modulare	
32A		
750V		
3 kVrms/60s		
0.8÷0.88Nm / 7.2÷7.9in.lbs.		
max 9mm		
6.0mm ² 10AWG Stranded Flessibile	6.0mm ² 10AWG Solid Rigido	2x2.5mm ² 2x14AWG Solid Rigido
-40°C ÷ +130°C		

①	PASSO	mm
②	POLI	
CORRENTE		
TENSIONE		
TENSIONE DI PROVA		
COPPIA CONSIGLIATA		
SPELLATURA CAVO		
CAVI CONNETTIBILI		
TEMP. DI ESERCIZIO		

EN60998	EN60998	UL1059 C22-2 N°158
-	-	-
-	-	-
-	-	-
-	-	-
-	-	-

EN60998	EN60998	UL1059 C22-2 N°158
-	-	PENDING / IN CORSO
-	-	
-	-	
-	-	
-	-	
-	-	

EN60998	EN60998	UL1059 C22-2 N°158
32A	25A	30A factory 30A field
750V	750V	600V
6.0mm ²	4.0mm ²	10÷30AWG
0.8Nm	0.5Nm	7.2Lb-in
EP150	N.40014734	E178356

OMOLOGAZIONI	
CORRENTE	
TENSIONE	
SEZIONE CONDUTTORE	
COPPIA	
FILE	

PA - UL 94 V0	
M3.5	Galvanized steel Acciaio zincato
Galvanized steel / Acciaio zincato	
Tin-plated copper alloy / Lega di rame stagnata	

PA - UL 94 V0	
M3	Galvanized steel Acciaio zincato
Nickelated copper alloy / Lega di rame nichelata	
Tin-plated copper alloy / Lega di rame stagnata	

PA - UL 94 V0	
M3	Galvanized steel Acciaio zincato
Nickelated copper alloy / Lega di rame nichelata	
Tin-plated copper alloy / Lega di rame stagnata	

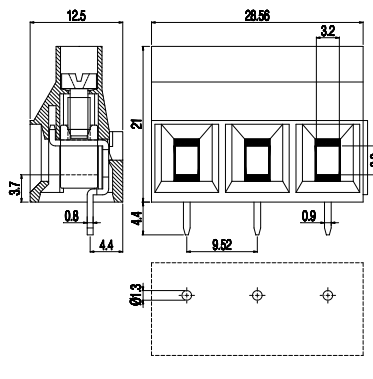
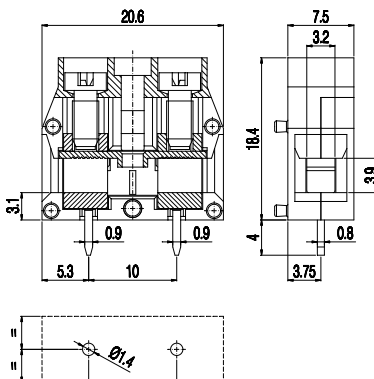
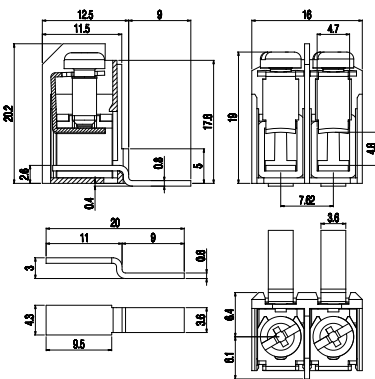
CORPO ISOLANTE	
VITE	
MORSETTO	
TERMINALE	

Series Serie	Pitch Passo	(*) Colour Colore				
ME672	7,62	- * - #				
Standard	On request / Su richiesta					
GY	GN	BK	BL	RD	YL	OG

Series Serie	Poles Poli	Pitch Passo	Version Versione	(*) Colour Colore		
MVL47	1÷N	7,5	V	- * - #		
Standard	On request / Su richiesta					
GN	GY	BK	BL	RD	YL	OG

Series Serie	Poles Poli	Pitch Passo	Version Versione	(*) Colour Colore		
MV49	2÷N	9,52	V	- * - #		
MV49	1÷N	19,04	V	- * - #		
Standard	On request / Su richiesta					
GN	GY	BK	BL	RD	YL	OG

COME ORDINARE	
* Codice personalizzazione (definito da euroclamp)	
COLORI	
# Specificare solo se diverso dallo standard	

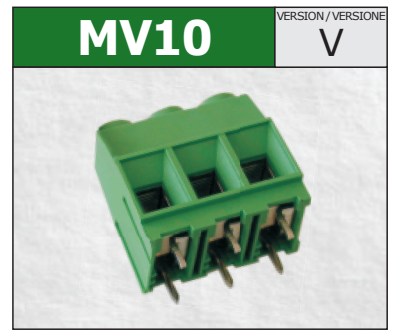
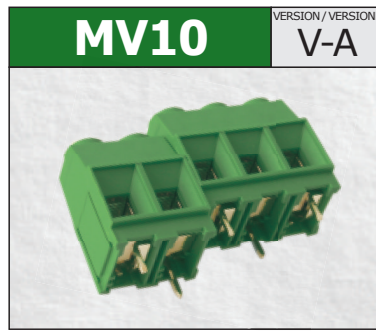
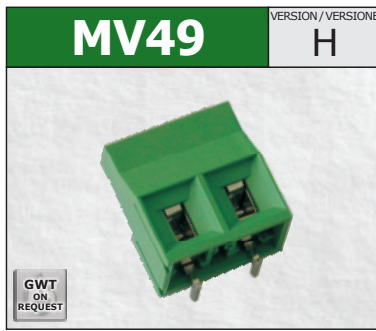
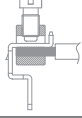


NOTE	
① I prodotti a passo 12,17 / 15,24 / 19,04 sono configurazioni con componenti metallici rimossi da poli alterni per aumentarne le distanze;	
② Configurazioni con un numero maggiore di poli sono ottenibili componendo le versioni modulari. Per evitare interferenze di montaggio occorre prevedere un'interruzione della morsettiere quando il numero dei poli è superiore a 30.	

Terminals are provided not assembled to the terminal block.
I terminali sono forniti non assemblati alla morsettiere.



**SINGLE DECK
TERMINAL BLOCKS**
Rising clamp



TECHNICAL DATA	① PITCH	mm
	② POLES	
	CURRENT	
	VOLTAGE	
	TEST VOLTAGE	
	RECOMMENDED TORQUE	
	WIRE STRIPPING	
	MAX WIRES SECTION	
	OPERATING TEMP.	

9,52 (19,04)		
2÷3 (1÷2)	Modular Modulare	
32A		
750V		
3 kVrms/60s		
0.8÷0.88Nm / 7.2÷7.9in.lbs.		
max 9mm		
6.0mm² 10AWG Stranded Flessibile	6.0mm² 10AWG Solid Rigido	2x2.5mm² 2x14AWG Solid Rigido
-40°C ÷ +130°C		

10,16		
2÷3	Modular Modulare	
49A		
750V		
3 kVrms/60s		
1.2÷1.32Nm / 10.8÷11.8in.lbs.		
max 15mm		
10mm² 8AWG Stranded Flessibile	16mm² 6AWG Solid Rigido	2x6.0mm² 2x10AWG Solid Rigido
-40°C ÷ +130°C		

10,16 (20,32)		
1÷3 (1÷2)	Modular Modulare	
70A		
750V (1000v)		
3 kVrms/60s (3,5 kVrms/60s)		
1.2÷1.32Nm / 10.8÷11.8in.lbs.		
max 15mm		
10mm² 8AWG Stranded Flessibile	16mm² 6AWG Solid Rigido	2x6.0mm² 2x10AWG Solid Rigido
-40°C ÷ +130°C		

APPROVAL DATA	APPROVALS		
	CURRENT	32A	25A
	VOLTAGE	750V	600V
	WIRE SECTION	6.0mm ²	4.0mm ²
	TORQUE	0.8Nm	0.5Nm
	FILE	EP150	N.40014734

EN60998	EN60998	UL1059 C22-2 N°158
32A	25A	30A factory 30A field
750V	750V	600V
6.0mm ²	4.0mm ²	10÷30AWG
0.8Nm	0.5Nm	7.2Lb-in
EP150	N.40014734	E178356

EN60998	EN60998	UL1059 C22-2 N°158
-	49A	42A factory 42A field
-	750V	300V
-	16mm ²	8÷30AWG
-	1.5Nm	10.8Lb-in
-	N.40034945	E178356

EN60998	EN60998	UL1059 C22-2 N°158
-	70A	57A factory 57A field
-	750V (1000v)	300V
-	16mm ²	6÷30AWG
-	1.5Nm	10.8Lb-in
-	N.40034945	E178356

MATERIALS	HOUSING	PA - UL 94 V0	
	SCREW	M3	Galvanized steel Acciaio zincato
	CLAMP	Nickel copper alloy / Lega di rame nichelata	
	TERMINAL	Tin-plated copper alloy / Lega di rame stagnata	

PA - UL 94 V0	PA - UL 94 V0	
M3	Galvanized steel Acciaio zincato	M4
Nickel copper alloy / Lega di rame nichelata		
Tin-plated copper alloy / Lega di rame stagnata		

PA - UL 94 V0	PA - UL 94 V0	
M4	Galvanized steel Acciaio zincato	M4
Nickel copper alloy / Lega di rame nichelata		
Tin-plated copper alloy / Lega di rame stagnata		

PA - UL 94 V0	PA - UL 94 V0	
M4	Galvanized steel Acciaio zincato	M4
Nickel copper alloy / Lega di rame nichelata		
Tin-plated copper alloy / Lega di rame stagnata		

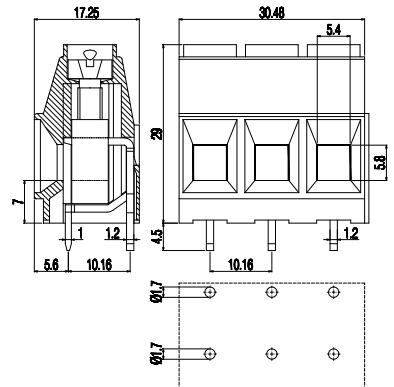
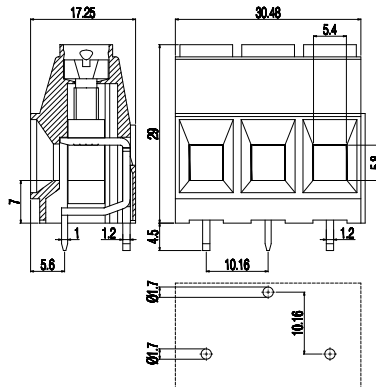
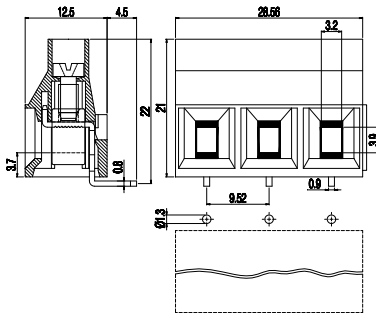
HOW TO ORDER
* Custom code (assigned by euroclamp)
COLOURS
To be specified just in case it is different from the standard

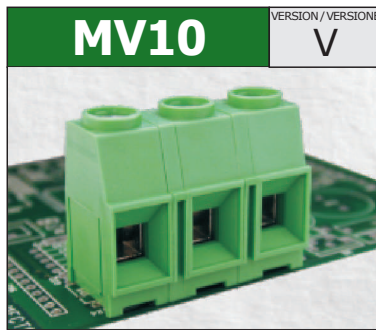
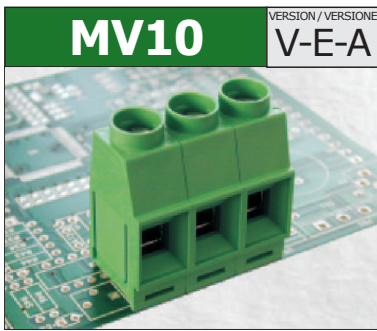
Series Serie	Poles Poli	Pitch Passo	Version Versione (*)	Colour Colore
MV49	2÷N	9,52	H	- * - #
MV49	1÷N	19,04	H	- * - #
Standard	On request / Su richiesta			
GN	GY	BK	BL	RD
			YL	OG

Series Serie	Poles Poli	Pitch Passo	Version Versione (*)	Colour Colore
MV10	2÷N	10,16	V-A	- * - #
Standard	On request / Su richiesta			
GN	GY	BK	BL	RD
			YL	OG

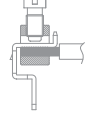
Series Serie	Poles Poli	Pitch Passo	Version Versione (*)	Colour Colore
MV10	1÷N	10,16	V	- * - #
MV10	1÷N	20,32	V	- * - #
Standard	On request / Su richiesta			
GN	GY	BK	BL	RD
			YL	OG

NOTE
① Products of pitches 19,04 / 20,32 are configurations with metal parts removed from alternating poles to increase spacings;
② Configurations of higher number of poles are obtainable composing modular versions. In order to avoid interference mounting, the terminal row should be interrupted when the number of positions exceeds 30.





**MORSETTIERE
MONOPIANO**
Carrello



10,16		
1	Modular Modulare	
42A		
1000V		
3 kVrms/60s		
1.2÷1.32Nm / 10.8÷11.8in.lbs.		
max 15mm		
10mm² 8AWG	16mm² 6AWG	2x6.0mm² 2x10AWG
Stranded Flessibile	Solid Rigido	Solid Rigido
-40°C ÷ +130°C		

12,7		
1	Modular Modulare	
49A		
1000V		
3,5 kVrms/60s		
1.2÷1.32Nm / 10.8÷11.8in.lbs.		
max 15mm		
10mm² 8AWG	16mm² 6AWG	2x6.0mm² 2x10AWG
Stranded Flessibile	Solid Rigido	Solid Rigido
-40°C ÷ +130°C		

12,7		
1	Modular Modulare	
70A		
1000V		
3,5 kVrms/60s		
1.2÷1.32Nm / 10.8÷11.8in.lbs.		
max 15mm		
10mm² 8AWG	16mm² 6AWG	2x6.0mm² 2x10AWG
Stranded Flessibile	Solid Rigido	Solid Rigido
-40°C ÷ +130°C		

①	PASSO	mm
②	POLI	
CORRENTE		
TENSIONE		
TENSIONE DI PROVA		
COPPIA CONSIGLIATA		
SPELLATURA CAVO		
CAVI CONNETTIBILI		
TEMP. DI ESERCIZIO		

EN60998	EN60998	UL1059 C22-2 N°158
-	-	PENDING / IN CORSO
-	-	
-	-	
-	-	
-	-	

EN60998	EN60998	UL1059 C22-2 N°158
-	49A	PENDING / IN CORSO
-	1000V	
-	16mm ²	
-	1.5Nm	
-	N.40034945	

EN60998	EN60998	UL1059 C22-2 N°158
-	70A	PENDING / IN CORSO
-	1000V	
-	16mm ²	
-	1.5Nm	
-	N.40034945	

OMOLOGAZIONI	
CORRENTE	
TENSIONE	
SEZIONE CONDUTTORE	
COPPIA	
FILE	

PA - UL 94 V0	
M4	Galvanized steel Acciaio zincato
Nickel copper alloy / Lega di rame nichelata	
Tin-plated copper alloy / Lega di rame stagnata	

PA - UL 94 V0	
M4	Galvanized steel Acciaio zincato
Nickel copper alloy / Lega di rame nichelata	
Tin-plated copper alloy / Lega di rame stagnata	

PA - UL 94 V0	
M4	Galvanized steel Acciaio zincato
Nickel copper alloy / Lega di rame nichelata	
Tin-plated copper alloy / Lega di rame stagnata	

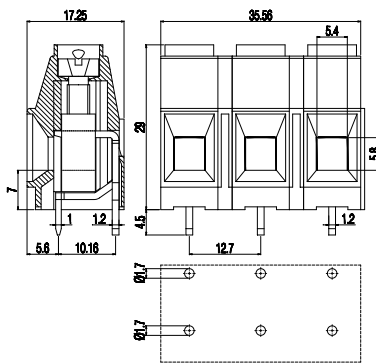
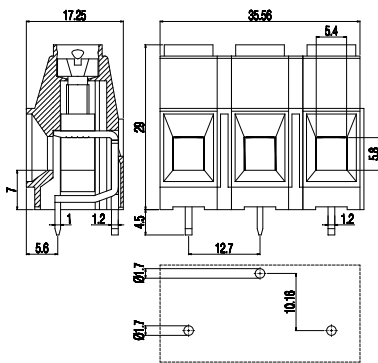
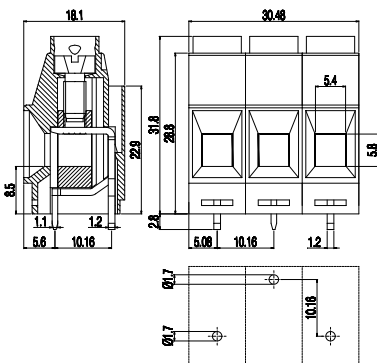
CORPO ISOLANTE	
VITE	
MORSETTO	
TERMINALE	

Series Serie	Poles Poli	Pitch Passo	Version Versione	(*)	Colour Colore	
MV10	1÷N	12,7	V-E-A	*	#	
Standard		On request / Su richiesta				
GN	GY	BK	BL	RD	YL	OG

Series Serie	Poles Poli	Pitch Passo	Version Versione	(*)	Colour Colore	
MV10	1÷N	12,7	V-A	*	#	
Standard		On request / Su richiesta				
GN	GY	BK	BL	RD	YL	OG

Series Serie	Poles Poli	Pitch Passo	Version Versione	(*)	Colour Colore	
MV10	1÷N	12,7	V	*	#	
Standard		On request / Su richiesta				
GN	GY	BK	BL	RD	YL	OG

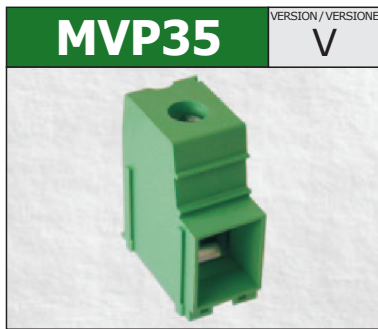
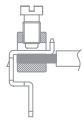
COME ORDINARE	
* Codice personalizzazione (definito da euroclamp)	
COLORI	
# Specificare solo se diverso dallo standard	



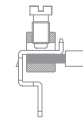
NOTE	
① I prodotti a passo 19,04 / 20,32 sono configurazioni con componenti metallici rimossi da poli alterni per aumentarne le distanze;	
② Configurazioni con un numero maggiore di poli sono ottenibili componendo le versioni modulari. Per evitare interferenze di montaggio occorre prevedere un'interruzione della morsetteria quando il numero dei poli è superiore a 30.	



**SINGLE DECK
TERMINAL BLOCKS**
Rising clamp



**MORSETTIERE
MONOPIANO**
Carrello



TECHNICAL DATA	PITCH	mm
	② POLES	
	CURRENT	
	VOLTAGE	
	TEST VOLTAGE	
	RECOMMENDED TORQUE	
	WIRE STRIPPING	
	MAX WIRES SECTION	
	OPERATING TEMP.	

15		
1	Modular Modulare	
125A		
1000V		
3,5 kVrms/60s		
3÷3.10Nm / 27÷29.7in.lbs.		
max 19mm		
35mm² 2AWG	Stranded Flessibile	35mm² 2AWG
		Solid Rigido
2x10mm² 2x8AWG		Solid Rigido
-40°C ÷ +130°C		

15		
1	With side flange Con flangia laterale	
125A		
1000V		
3,5 kVrms/60s		
3÷3.10Nm / 27÷29.7in.lbs.		
max 19mm		
35mm² 2AWG	Stranded Flessibile	35mm² 2AWG
		Solid Rigido
2x10mm² 2x8AWG		Solid Rigido
-40°C ÷ +130°C		

PASSO	mm
② POLI	
CORRENTE	
TENSIONE	
TENSIONE DI PROVA	
COPPIA CONSIGLIATA	
SPELLATURA CAVO	
CAVI CONNETTIBILI	
TEMP. DI ESERCIZIO	

APPROVAL DATA	APPROVALS	
	CURRENT	
	VOLTAGE	
	WIRE SECTION	
	TORQUE	
	FILE	

EN60998	EN60998	UL1059 C22-2 N°158
-	-	125A factory 125A field
-	-	600V
-	-	1÷20AWG
-	-	27Lb-in
-	-	E178356

EN60998	EN60998	UL1059 C22-2 N°158
-	-	125A factory 125A field
-	-	600V
-	-	1÷20AWG
-	-	27Lb-in
-	-	E178356

OMOLOGAZIONI	
CORRENTE	
TENSIONE	
SEZIONE CONDUTTORE	
COPPIA	
FILE	

MATERIALS	HOUSING	
	SCREW	
	CLAMP	
	TERMINAL	

PA - UL 94 V0		
M5	Captive Imperdibile	Galvanized steel Acciaio zincato
Nickel copper alloy / Lega di rame nichelata		
Tin-plated copper alloy / Lega di rame stagnata		

PA - UL 94 V0		
M5	Captive Imperdibile	Galvanized steel Acciaio zincato
Nickel copper alloy / Lega di rame nichelata		
Tin-plated copper alloy / Lega di rame stagnata		

CORPO ISOLANTE	
VITE	
MORSETTO	
TERMINALE	

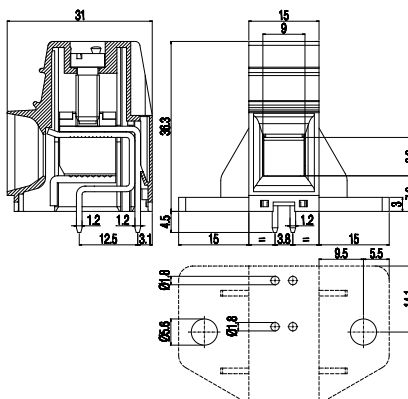
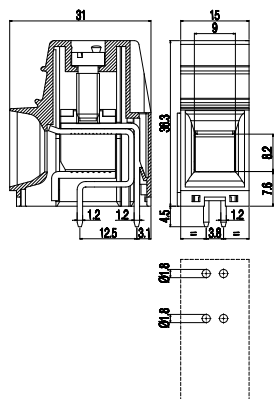
HOW TO ORDER
* Custom code (assigned by euroclamp)
COLOURS
To be specified just in case it is different from the standard

Series Serie	Poles Poli	Pitch Passo	Version Versione (*)	Colour Colore
MVP35	1÷N	15	V	#
Standard	On request / Su richiesta			
GN	GY	BK	BL	RD
			YL	OG

Series Serie	Poles Poli	Pitch Passo	Version Versione (*)	Colour Colore
MVP35	1÷N	15	V-KK	#
Standard	On request / Su richiesta			
GN	GY	BK	BL	RD
			YL	OG

COME ORDINARE
* Codice personalizzazione (definito da euroclamp)
COLORI
Specificare solo se diverso dallo standard

NOTE
② Configurations of higher number of poles are obtainable composing modular versions. In order to avoid interference mounting, the terminal row should be interrupted when the number of positions exceeds 30.



NOTE
② Configurazioni con un numero maggiore di poli sono ottenibili componendo le versioni modulari. Per evitare interferenze di montaggio occorre prevedere un'interruzione della morsettiere quando il numero dei poli è superiore a 30.