

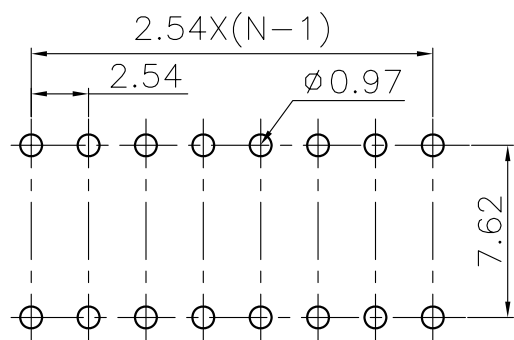
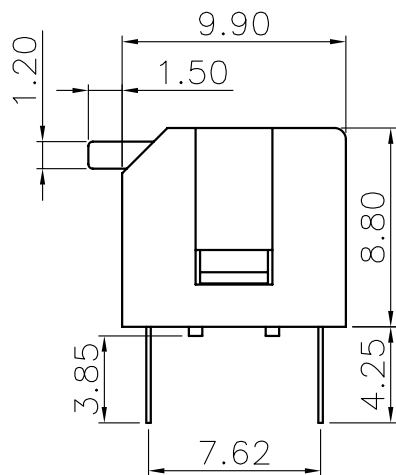
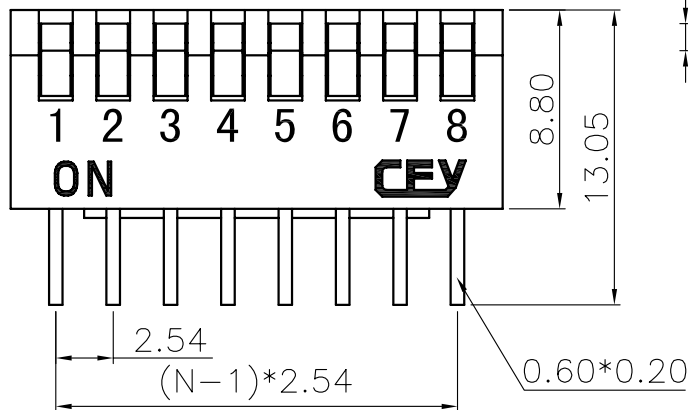
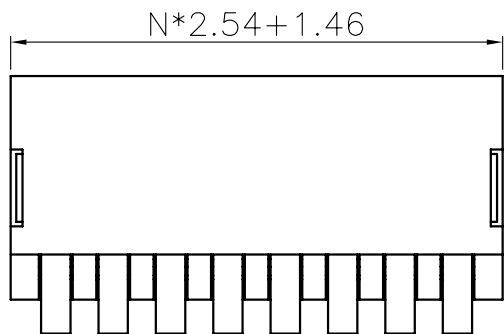
REV.	DESCRIPTION	DRAWN	CHECKED	APPROVED
A	NEW RELEASE	YCH 12/13/08	~	

NOTES:

- 1.MECHANICAL
 - 1.1 Operation Force: 800g Max
 - 1.2 Stroke: 1.90mm
 - 1.3 Operation Temperature: -25°C~+80°C
 - 1.4 Storage Temperature: -45°C~+90°C
- 2.MATERIALS
 - 2.1 Base: Engineering Plastics,Black
 - 2.2 Cover: Engineering Plastics,Red or Blue
 - 2.3 Button: Engineering Plastics,White
 - 2.4 Terminal: Alloy Copper, Gold plating
- 3.ELECTRICAL
 - 3.1 Electrical Life: 2000 operations cycles per switch
 - 3.2 Non-Switching Rating: 100mA,50VDC
 - 3.3 Switching rating: 25mA,24VDC
 - 3.4 Contact resistance: 50mΩ Max. at initial; 100mΩ Max. after life test.
 - 3.5 Insulation Resistance: 100MΩ,500VDC
 - 3.6 Dielectric Strength: 500VAC/1 minute
 - 3.7 Circuit: Single pole single throw
4. PRODUCT NUMBER CODE:

DS1040 - X X X

 - Housing Type
 - T: Piano
 - Housing color
 - R: Red
 - B: Blue
 - K: Black
 - N: Brown
 - Positions
 - 02: 2pin 07: 7pin
 - 03: 3pin 08: 8pin
 - 04: 4pin 09: 9pin
 - 05: 5pin 10: 10pin
 - 06: 6pin 11: 11pin
 - 12: 12pin




RECOMMEND PCB LAYOUT
(TOLERANCE=±0.05)

GENERAL TOLERANCE		ANGLE TOLERANCE	
X.	±0.60	X.	±5°
.X	±0.38	.X	±3°
.XX	±0.25	.XX	±2°

PROJECTION	TITLE	DIP SWITCH	
UNITS	mm		
SHEET SIZE	A4	SERIES	DS1040

DRAWING TYPE	CUSTOMER		
SCALE	1:1	SHEET	1 OF 1
DRAWING NO.	C-DS1040-XXT		

 晨翔电子有限公司
CONNFLY CONNFLY ELECTRONIC CO. LTD

REV.	DESCRIPTION	DRAWN	CHECKED	APPROVED
A	NEW RELEASE	YCH 12/13/08	~	

NOTES:

1.MECHANICAL

- 1.1 Operation Force: 1000g Max
- 1.2 Stroke: 1.90mm
- 1.3 Operation Temperature: -20°C~+85°C
- 1.4 Storage Temperature: -40°C~+85°C

2.MATERIALS

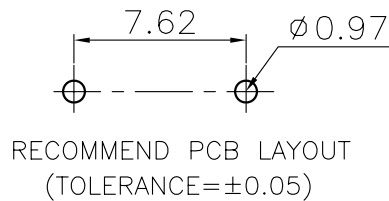
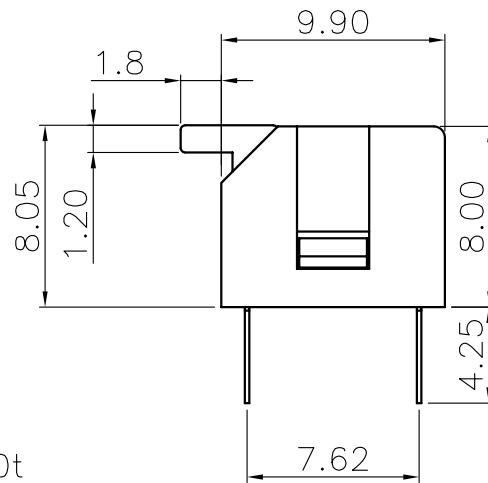
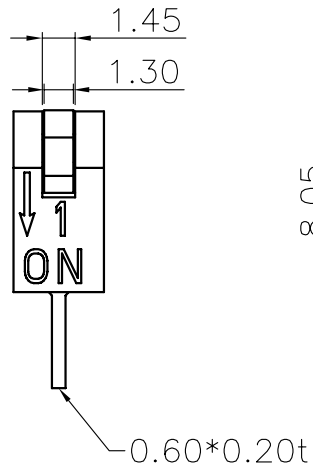
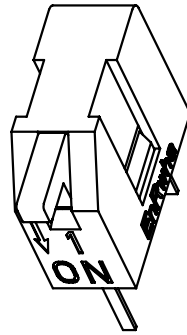
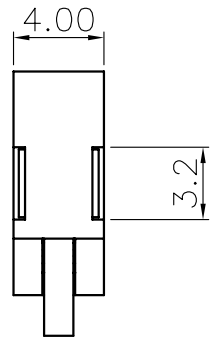
- 2.1 Base: Engineering Plastics,Black
- 2.2 Cover: Engineering Plastics,Red or Blue
- 2.3 Button: Engineering Plastics,White
- 2.4 Terminal: Alloy Copper, Gold plating

3.ELECTRICAL

- 3.1 Electrical Life: 2000 operations cycles per switch
- 3.2 Non-Switching Rating: 100mA,50VDC
- 3.3 Switching rating: 25mA,24VDC
- 3.4 Contact resistance: 50mΩ Max. at initial; 100mΩ Max. after life test.
- 3.5 Insulation Resistance: 100MΩ,500VDC
- 3.6 Dielectric Strength: 500VAC/1 minute
- 3.7 Circuit: Single pole single throw

4. PRODUCT NUMBER CODE:

DS1040 - X X X
 X Housing Type
 T: Piano
 X Housing color
 R: Red
 B: Blue
 K: Black
 N: Brown
 X Positions
 01: 1pin



GENERAL TOLERANCE		ANGLE TOLERANCE	
X.	±0.60	X.	±5°
.X	±0.38	.X	±3°
.XX	±0.25	.XX	±2°

PROJECTION	TITLE	DIP SWITCH	
UNITS	mm		
SHEET SIZE	A4	SERIES	DS1040

DRAWING TYPE	CUSTOMER		
SCALE	1:1	SHEET	1 OF 1
DRAWING NO.	C-DS1040-1XT		


晨翔电子有限公司
CONNFLY CONNFLY ELECTRONIC CO. LTD