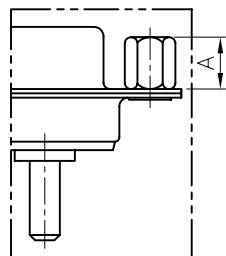
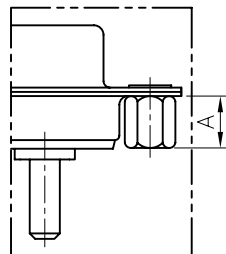


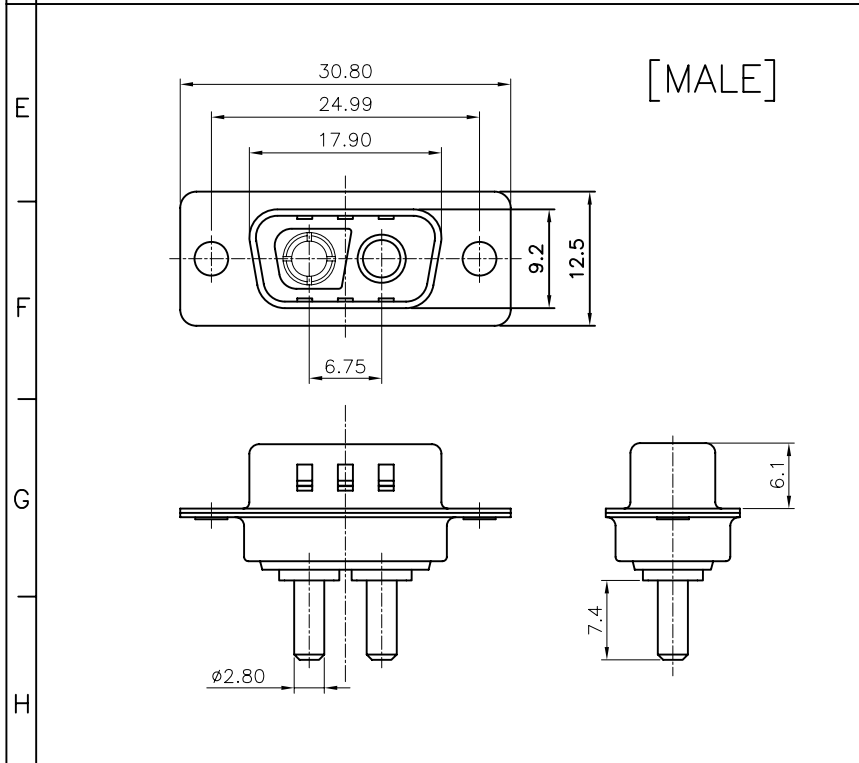
[FEMALE]



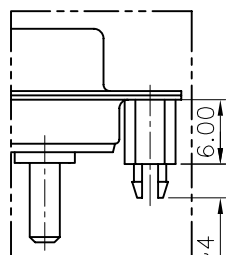
CC TYPE



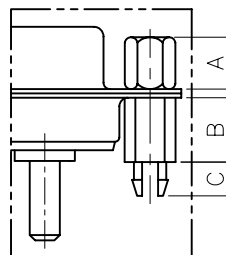
CS TYPE



[MALE]



BR TYPE



BRJ TYPE

REV.	DESCRIPTION	DRAWN	CHECKED	APPROVED
A	NEW RELEASE	YCH 01/10/08'	~	

NOTES:

- ELECTRICAL CHARACTERISTICS:
  - CONTACT RESISTANCE: 20mΩ Max. INITIAL.
  - DIELECTRIC WITHSTANDING VOLTAGE: 500V AC(rms)FOR 1 MINUTE.
  - INSULATION RESISTANCE: 1000MΩ Min.
  - CURRENT RATING: 5A/40A(Power PIN).
  - VOLTAGE RATING: 300V
- ENVIRONMENT CHARACTERISTICS:
  - TEMPERATURE RANGE: -40° C ~ +105° C.
- MECHANICAL CHARACTERISTICS:
  - DURABILITY: 500 CYCLES.
  - CONTACT RETENTION FORCE: 1Kgf MINIMUM.
- MATERIALS:
  - SHELL: SPCC.
  - CONTACT: COPPER ALLOY.
  - INSULATOR: THERMOPLASTIC UL 94V-0, GLASS FIBER FILLED.
- PART NUMBER CODE:

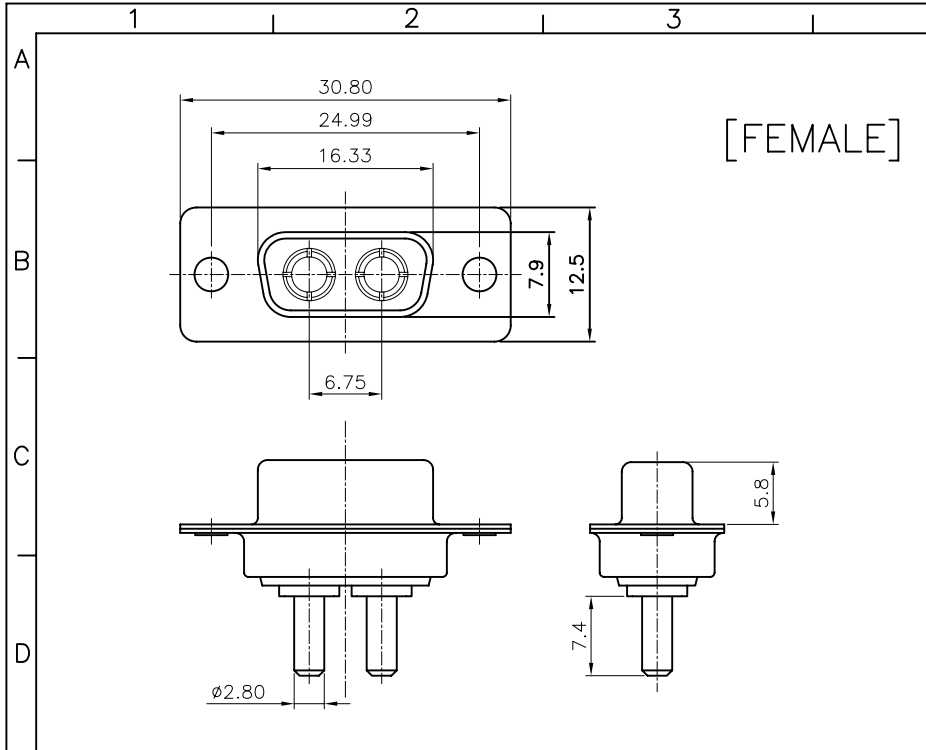
DS1034-16- X X X X X X X  
 SCREW DIM. A  
 S: Standard(W/O nut)  
 4: 4.80  
 5: 5.80  
 SCREW TYPE  
 S: Standard(W/O nut)  
 1: CC TYPE  
 2: CS TYPE  
 3: BR TYPE  
 4: BRJ TYPE DIM. B:6.00 C: 3~4mm  
 5: BRJ TYPE DIM. B:6.00 C: 5~6mm  
 CONTACT PLATING  
 8: FULL GOLD FLASH  
 SHELL PLATING  
 N: FORNT SHELL NICKEL, BACK SHELL TIN  
 HOUSING COLOR  
 B: BLACK  
 CONNECTOR TYPE  
 M: MALE  
 F: FEMALE

GENERAL TOLERANCE		ANGLE TOLERANCE	
X.	±0.60	X.	±5°
.X	±0.38	.X	±3°
.XX	±0.25	.XX	±2°

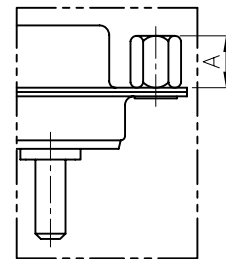
PROJECTION	TITLE	MACHINE PIN D-SUB 1+1	
mm		V/T TYPE	
SHEET SIZE	A4	SERIES	DS1034-16 SERIES

DRAWING TYPE	CUSTOMER		
SCALE	1:1	SHEET	1 OF 1
DRAWING NO.	C-DS1034-16-XXXX-A		

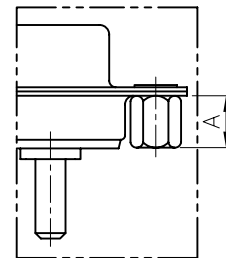
**晨翔电子有限公司**  
**CONNFLY CONNFLY ELECTRONIC CO. LTD**



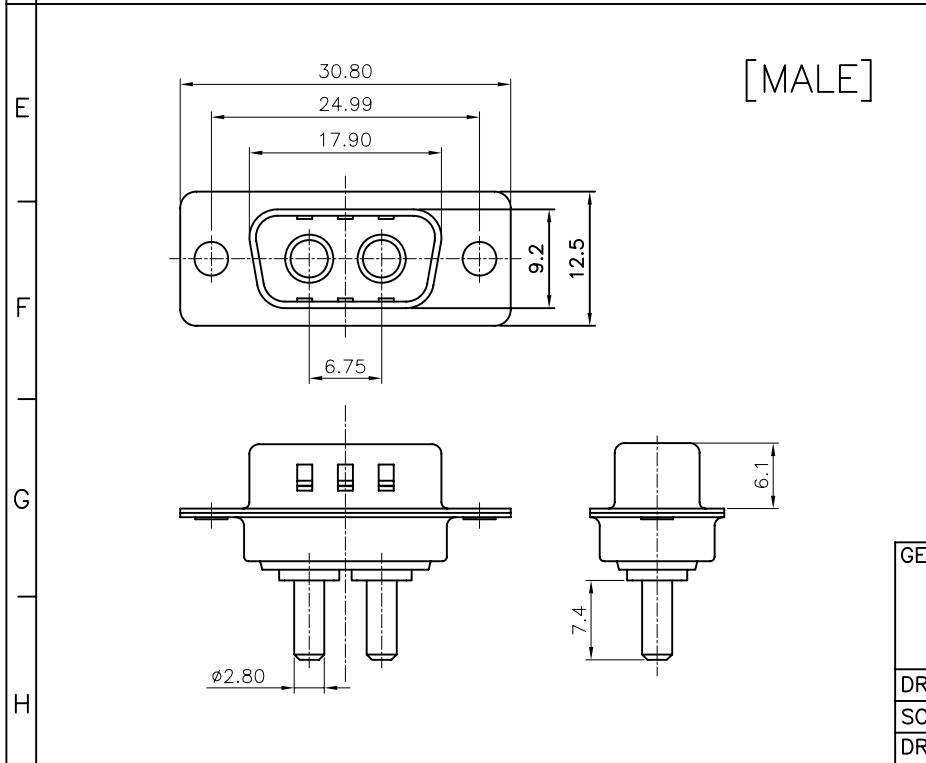
[FEMALE]



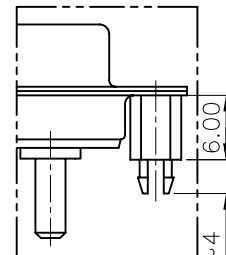
CC TYPE



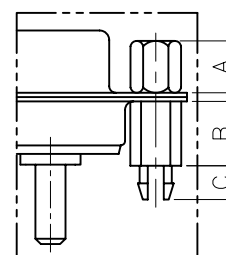
CS TYPE



[MALE]



BR TYPE

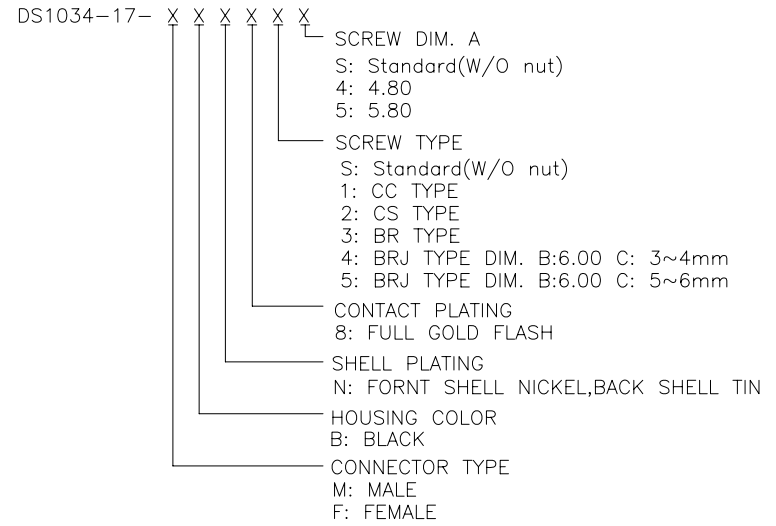


BRJ TYPE

REV.	DESCRIPTION	DRAWN	CHECKED	APPROVED
A	NEW RELEASE	YCH 01/10/08'	~	

NOTES:

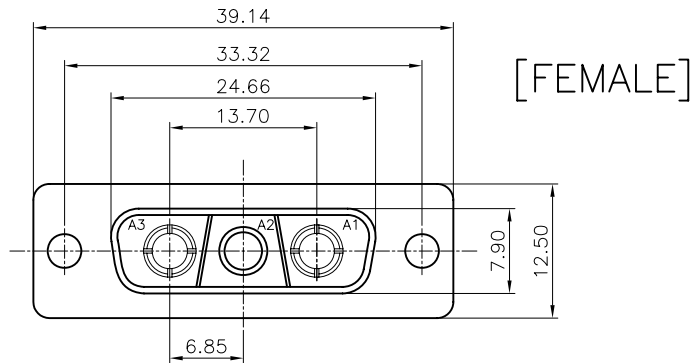
- ELECTRICAL CHARACTERISTICS:
  - CONTACT RESISTANCE: 20mΩ Max. INITIAL.
  - DIELECTRIC WITHSTANDING VOLTAGE: 500V AC(rms)FOR 1 MINUTE.
  - INSULATION RESISTANCE: 1000MΩ Min.
  - CURRENT RATING: 5A/40A(POWER PIN).
  - VOLTAGE RATING: 300V
- ENVIRONMENT CHARACTERISTICS:
  - TEMPERATURE RANGE: -40° C ~ +105° C.
- MECHANICAL CHARACTERISTICS:
  - DURABILITY: 500 CYCLES.
  - CONTACT RETENTION FORCE: 1Kgf MINIMUM.
- MATERIALS:
  - SHELL: SPCC.
  - CONTACT: COPPER ALLOY.
  - INSULATOR: THERMOPLASTIC UL 94V-0, GLASS FIBER FILLED.
- PART NUMBER CODE:



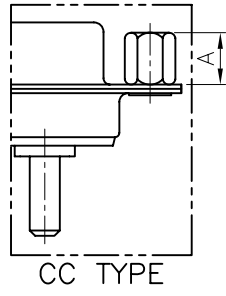
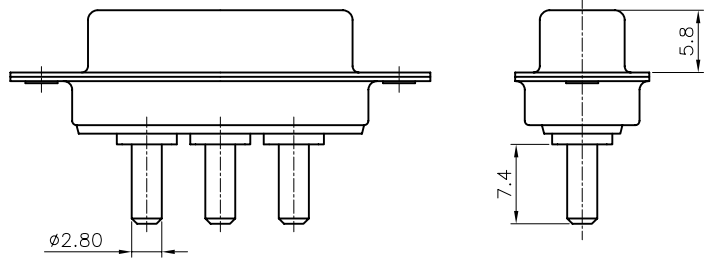
GENERAL TOLERANCE		ANGLE TOLERANCE	
X.	±0.60	X.	±5°
.X	±0.38	.X	±3°
.XX	±0.25	.XX	±2°
DRAWING TYPE		CUSTOMER	
SCALE	1:1	SHEET	1 OF 1
DRAWING NO.	C-DS1034-17-XXXX-A		

PROJECTION		TITLE	MACHINE PIN D-SUB 2P
UNITS	mm		V/T TYPE
SHEET SIZE	A4	SERIES	DS1034-17 SERIES

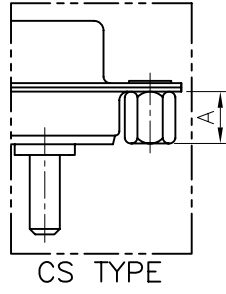
**晨翔电子有限公司**  
**CONNFLY CONNFLY ELECTRONIC CO. LTD**



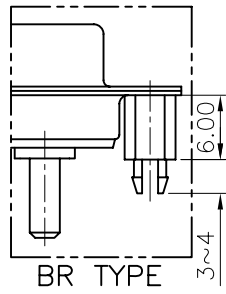
[FEMALE]



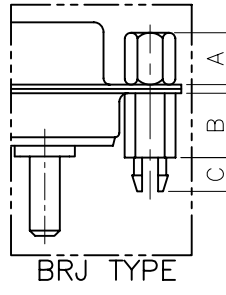
CC TYPE



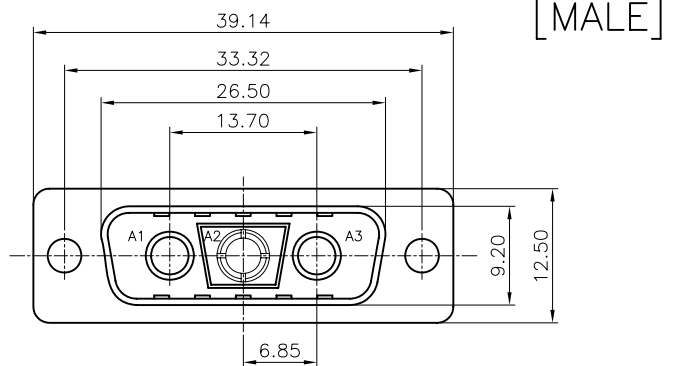
CS TYPE



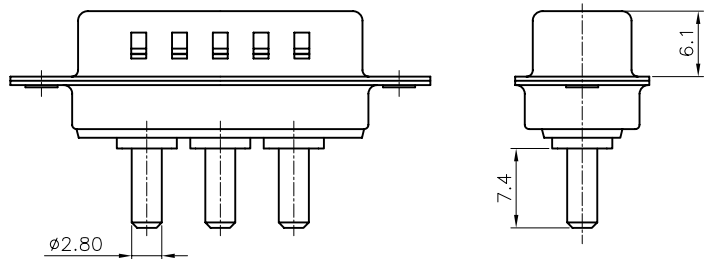
BR TYPE



BRJ TYPE



[MALE]



REV.	DESCRIPTION	DRAWN	CHECKED	APPROVED
A	NEW RELEASE	LJC 01/17/09'	~	

NOTES:

- ELECTRICAL CHARACTERISTICS:
  - CONTACT RESISTANCE: 20mΩ Max. INITIAL.
  - DIELECTRIC WITHSTANDING VOLTAGE: 500V AC(rms)FOR 1 MINUTE.
  - INSULATION RESISTANCE: 1000MΩ Min.
  - CURRENT RATING: 5A/40A(Power PIN).
  - VOLTAGE RATING: 300V
- ENVIRONMENT CHARACTERISTICS:
  - TEMPERATURE RANGE: -40° C ~ +105° C.
- MECHANICAL CHARACTERISTICS:
  - DURABILITY: 500 CYCLES.
  - CONTACT RETENTION FORCE: 1KgF MINIMUM.
- MATERIALS:
  - SHELL: SPCC.
  - CONTACT: COPPER ALLOY.
  - INSULATOR: THERMOPLASTIC UL 94V-0, GLASS FIBER FILLED.
- PART NUMBER CODE:

DS1034-18- X X X X X X

SCREW DIM. A  
S: Standard(W/O nut)  
4: 4.80  
5: 5.80

SCREW TYPE  
S: Standard(W/O nut)  
1: CC TYPE  
2: CS TYPE  
3: BR TYPE  
4: BRJ TYPE DIM. B:6.00 C: 3~4mm  
5: BRJ TYPE DIM. B:6.00 C: 5~6mm

CONTACT PLATING  
8: FULL GOLD FLASH

SHELL PLATING  
N: FORNT SHELL NICKEL, BACK SHELL TIN


HOUSING COLOR  
B: BLACK

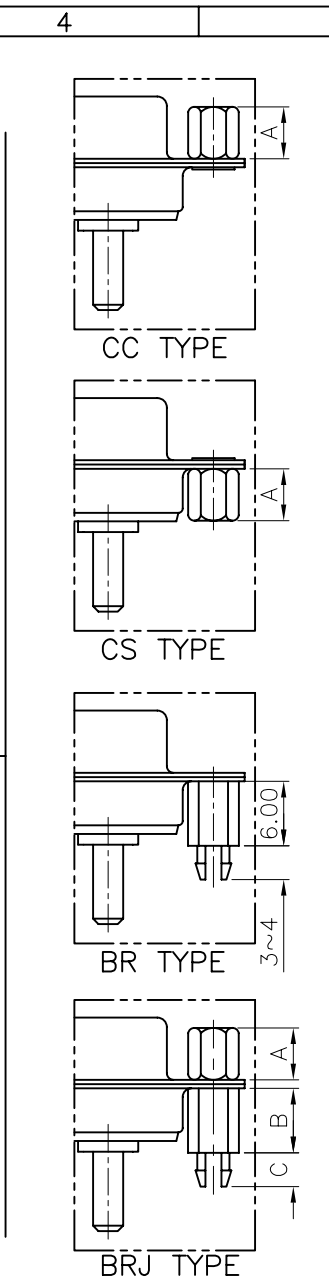
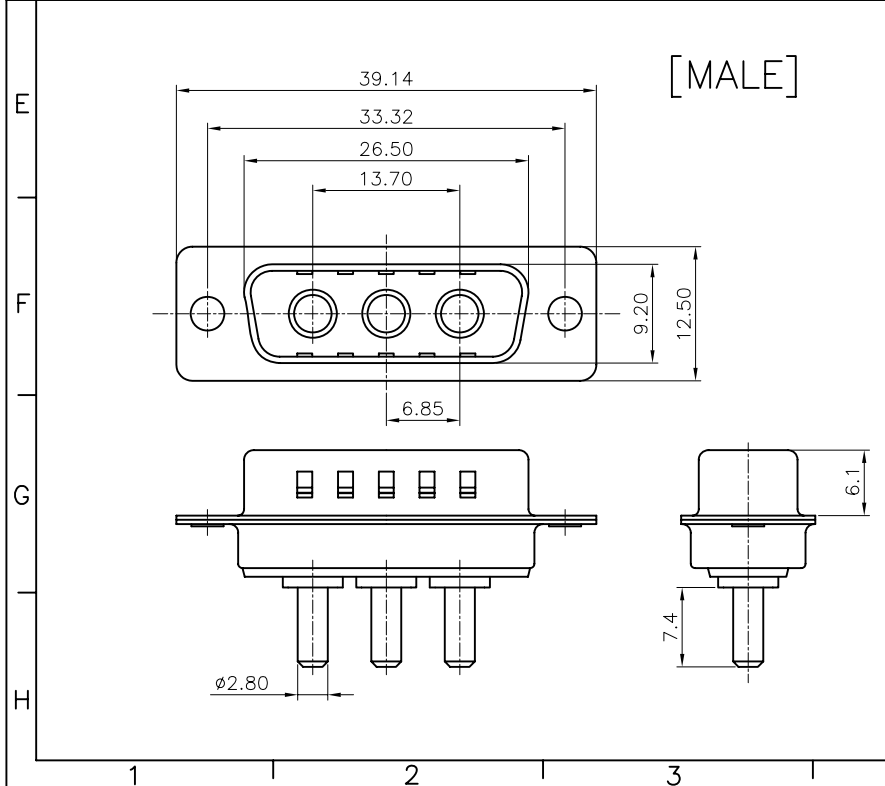
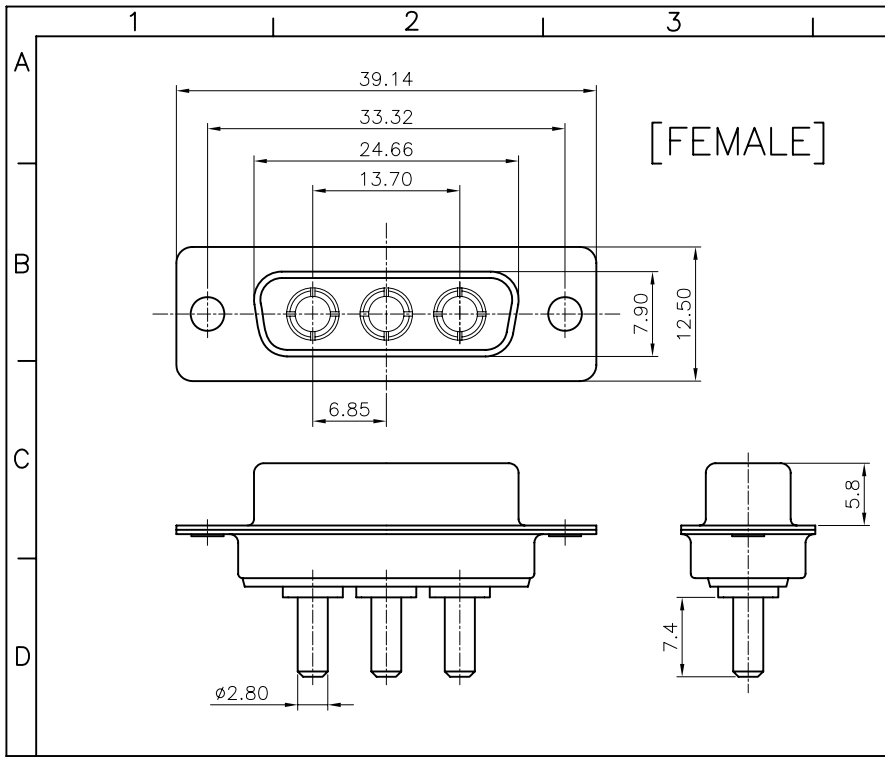
CONNECTOR TYPE  
M: MALE  
F: FEMALE

GENERAL TOLERANCE		ANGLE TOLERANCE	
X.	±0.60	X.	±5°
.X	±0.38	.X	±3°
.XX	±0.25	.XX	±2°

DRAWING TYPE	CUSTOMER		
SCALE	1:1	SHEET	1 OF 1
DRAWING NO.	C-DS1034-18-XXXX-A		

PROJECTION	TITLE	MACHINE PIN D-SUB 2+1	
UNITS	mm	V/T TYPE	
SHEET SIZE	A4	SERIES	DS1034-18 SERIES


**晨翔电子有限公司**  
**CONNFLY CONNFLY ELECTRONIC CO. LTD**



REV.	DESCRIPTION	DRAWN	CHECKED	APPROVED
A	NEW RELEASE	LJC 01/17/09'	~	

NOTES:


- ELECTRICAL CHARACTERISTICS:
  - CONTACT RESISTANCE: 20mΩ Max. INITIAL.
  - DIELECTRIC WITHSTANDING VOLTAGE: 500V AC(rms)FOR 1 MINUTE.
  - INSULATION RESISTANCE: 1000MΩ Min.
  - CURRENT RATING: 5A/40A(POWER PIN).
  - VOLTAGE RATING: 300V
- ENVIRONMENT CHARACTERISTICS:
  - TEMPERATURE RANGE: -40° C ~ +105° C.
- MECHANICAL CHARACTERISTICS:
  - DURABILITY: 500 CYCLES.
  - CONTACT RETENTION FORCE: 1KgF MINIMUM.
- MATERIALS:
  - SHELL: SPCC.
  - CONTACT: COPPER ALLOY.
  - INSULATOR: THERMOPLASTIC UL 94V-0, GLASS FIBER FILLED.

5. PART NUMBER CODE:  
 DS1034-19- X X X X X X  
 SCREW DIM. A  
 S: Standard(W/O nut)  
 4: 4.80  
 5: 5.80  
 SCREW TYPE  
 S: Standard(W/O nut)  
 1: CC TYPE  
 2: CS TYPE  
 3: BR TYPE  
 4: BRJ TYPE DIM. B:6.00 C: 3~4mm  
 5: BRJ TYPE DIM. B:6.00 C: 5~6mm  
 CONTACT PLATING  
 8: FULL GOLD FLASH  
 SHELL PLATING  
 N: FRONT SHELL NICKEL, BACK SHELL TIN  
 HOUSING COLOR  
 B: BLACK  
 CONNECTOR TYPE  
 M: MALE  
 F: FEMALE

GENERAL TOLERANCE		ANGLE TOLERANCE	
X.	±0.60	X.	±5°
.X	±0.38	.X	±3°
.XX	±0.25	.XX	±2°

DRAWING TYPE	CUSTOMER		
SCALE	1:1	SHEET	1 OF 1
DRAWING NO.	C-DS1034-19-XXXX-A		

PROJECTION	TITLE	MACHINE PIN D-SUB 3P	
UNITS	mm	V/T TYPE	
SHEET SIZE	A4	SERIES	DS1034-19 SERIES


**晨翔电子有限公司**  
**CONNFLY CONNFLY ELECTRONIC CO. LTD**

REV.	DESCRIPTION	DRAWN	CHECKED	APPROVED
A	NEW RELEASE	LJC 01/17/09'	~	

NOTES:

- ELECTRICAL CHARACTERISTICS:
  - CONTACT RESISTANCE: 20mΩ Max. INITIAL.
  - DIELECTRIC WITHSTANDING VOLTAGE: 500V AC(rms)FOR 1 MINUTE.
  - INSULATION RESISTANCE: 1000MΩ Min.
  - CURRENT RATING: 5A/40A(POWER PIN).
  - VOLTAGE RATING: 300V
- ENVIRONMENT CHARACTERISTICS:
  - TEMPERATURE RANGE: -40° C ~ +105° C.
- MECHANICAL CHARACTERISTICS:
  - DURABILITY: 500 CYCLES.
  - CONTACT RETENTION FORCE: 1Kgf MINIMUM.
- MATERIALS:
  - SHELL: SPCC.
  - CONTACT: COPPER ALLOY.
  - INSULATOR: THERMOPLASTIC UL 94V-0, GLASS FIBER FILLED.
- PART NUMBER CODE:

DS1034-20- X X X X X X

SCREW DIM. A  
 S: Standard(W/O nut)  
 4: 4.80  
 5: 5.80

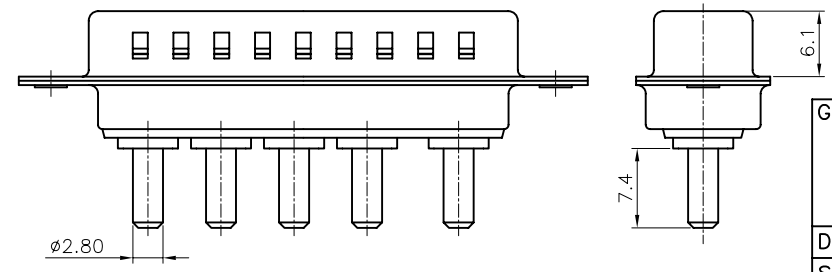
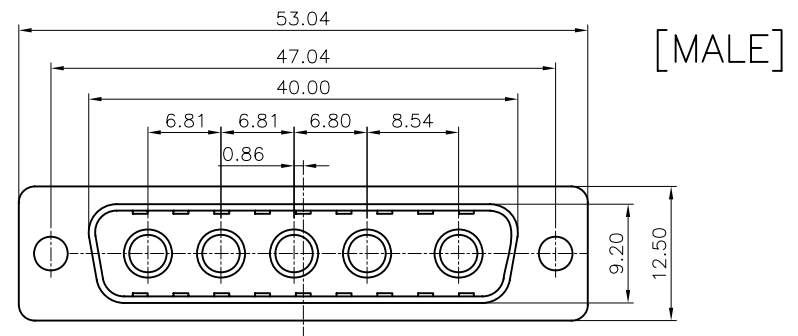
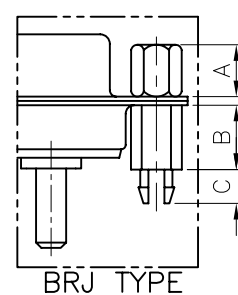
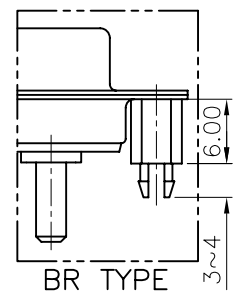
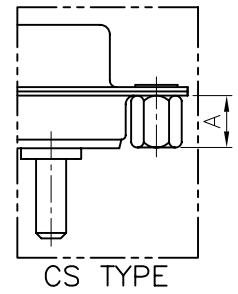
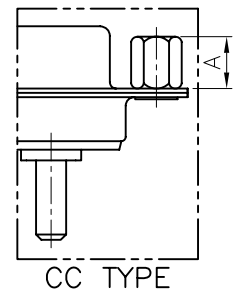
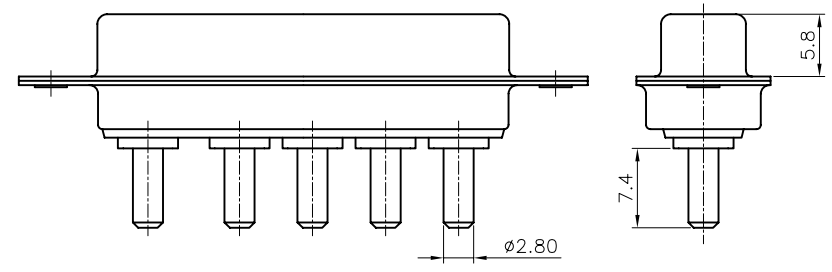
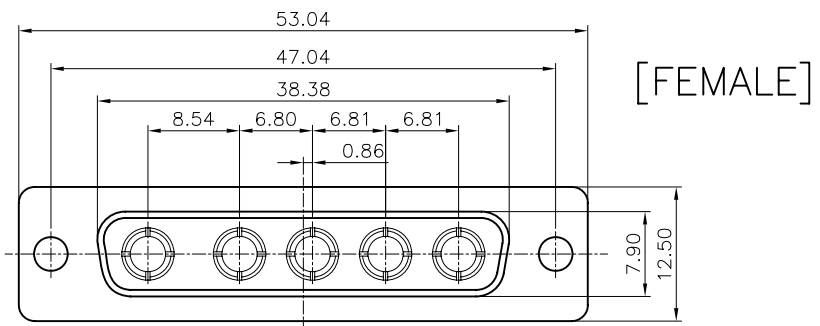
SCREW TYPE  
 S: Standard(W/O nut)  
 1: CC TYPE  
 2: CS TYPE  
 3: BR TYPE  
 4: BRJ TYPE DIM. B:6.00 C: 3~4mm  
 5: BRJ TYPE DIM. B:6.00 C: 5~6mm

CONTACT PLATING  
 8: FULL GOLD FLASH

SHELL PLATING  
 N: FORNT SHELL NICKEL, BACK SHELL TIN

HOUSING COLOR  
 B: BLACK

CONNECTOR TYPE  
 M: MALE  
 F: FEMALE



GENERAL TOLERANCE		ANGLE TOLERANCE	
X.	±0.60	X.	±5°
.X	±0.38	.X	±3°
.XX	±0.25	.XX	±2°

DRAWING TYPE	CUSTOMER		
SCALE	1:1	SHEET	1 OF 1
DRAWING NO.	C-DS1034-20-XXXX-A		

PROJECTION		TITLE	MACHINE PIN D-SUB 5P
UNITS	mm		V/T TYPE
SHEET SIZE	A4	SERIES	DS1034-20 SERIES

晨翔电子有限公司  
**CONNFLY CONNFLY ELECTRONIC CO. LTD**

REV.	DESCRIPTION	DRAWN	CHECKED	APPROVED
A	NEW RELEASE	LJC 01/17/09'	~	

NOTES:

- ELECTRICAL CHARACTERISTICS:
  - CONTACT RESISTANCE: 20mΩ Max. INITIAL.
  - DIELECTRIC WITHSTANDING VOLTAGE: 500V AC(rms)FOR 1 MINUTE.
  - INSULATION RESISTANCE: 1000MΩ Min.
  - CURRENT RATING: 5A/40A(POWER PIN).
  - VOLTAGE RATING: 300V
- ENVIRONMENT CHARACTERISTICS:
  - TEMPERATURE RANGE: -40° C ~ +105° C.
- MECHANICAL CHARACTERISTICS:
  - DURABILITY: 500 CYCLES.
  - CONTACT RETENTION FORCE: 1Kgf MINIMUM.
- MATERIALS:
  - SHELL: SPCC.
  - CONTACT: COPPER ALLOY.
  - INSULATOR: THERMOPLASTIC UL 94V-0, GLASS FIBER FILLED.
- PART NUMBER CODE:

DS1034-13- X X X X X X X

SCREW DIM. A  
S: Standard(W/O nut)  
4: 4.80  
5: 5.80

SCREW TYPE  
S: Standard(W/O nut)  
1: CC TYPE  
2: CS TYPE  
3: BR TYPE

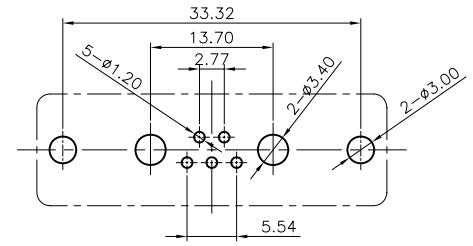
4: BRJ TYPE DIM. B:6.00 C: 3~4mm  
5: BRJ TYPE DIM. B:6.00 C: 5~6mm

CONTACT PLATING  
8: FULL GOLD FLASH

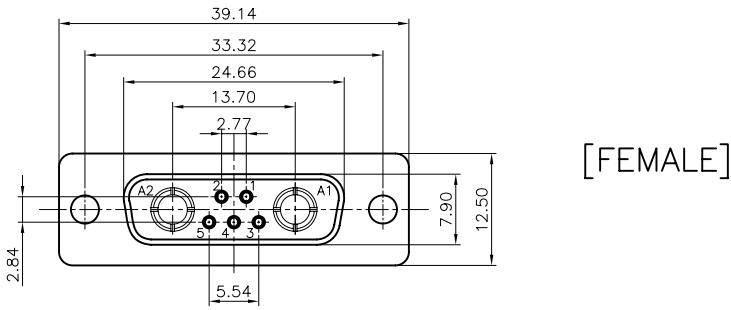
SHELL PLATING  
N: FORNT SHELL NICKEL, BACK SHELL TIN

HOUSING COLOR  
B: BLACK

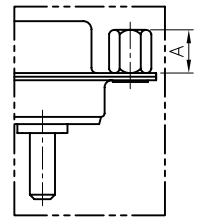
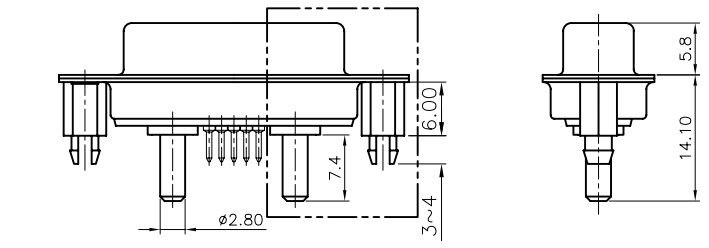
CONNECTOR TYPE  
M: MALE  
F: FEMALE



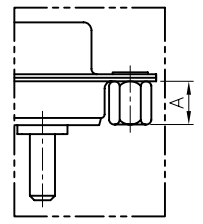
RECOMMEND PCB LAYOUT (TOLERANCE=±0.05)



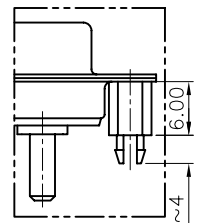
[FEMALE]



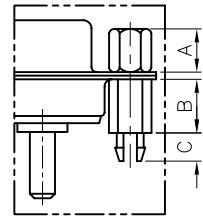
CC TYPE



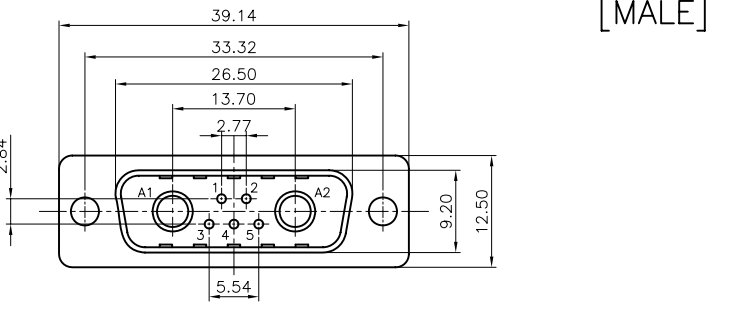
CS TYPE



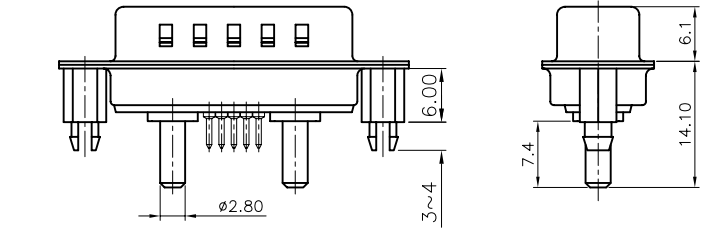
BR TYPE



BRJ TYPE




[MALE]



GENERAL TOLERANCE	ANGLE TOLERANCE
X. ±0.60	X. ±5°
.X ±0.38	.X ±3°
.XX ±0.25	.XX ±2°

PROJECTION	TITLE	MACHINE PIN D-SUB 5+2
mm		V/T TYPE
SHEET SIZE	SERIES	DS1034-13 SERIES

DRAWING TYPE	CUSTOMER
SCALE	1:1 SHEET 1 OF 1
DRAWING NO.	C-DS1034-13-XXXX-A


**晨翔电子有限公司**  
**CONNFLY CONNFLY ELECTRONIC CO. LTD**

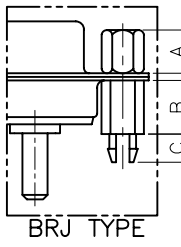
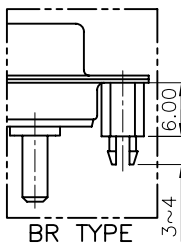
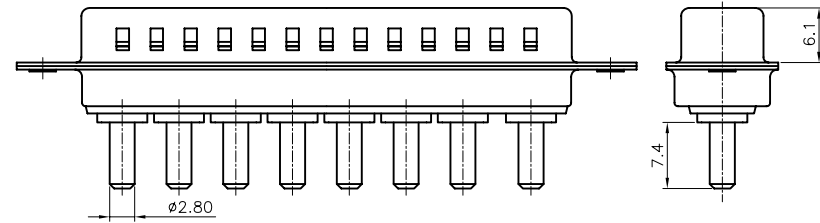
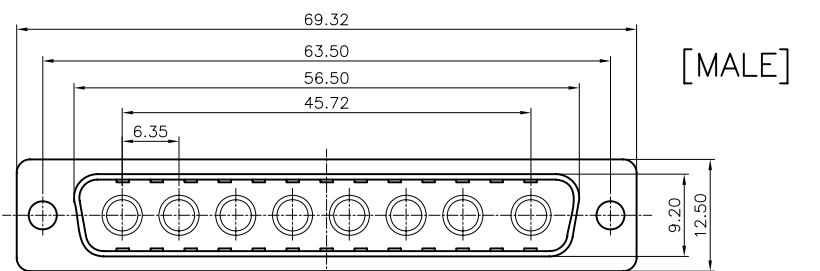
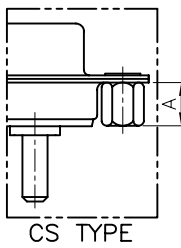
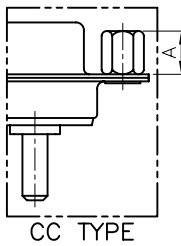
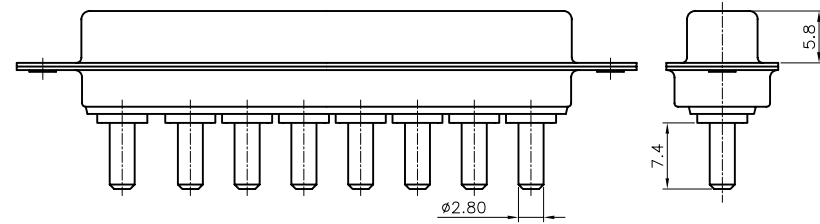
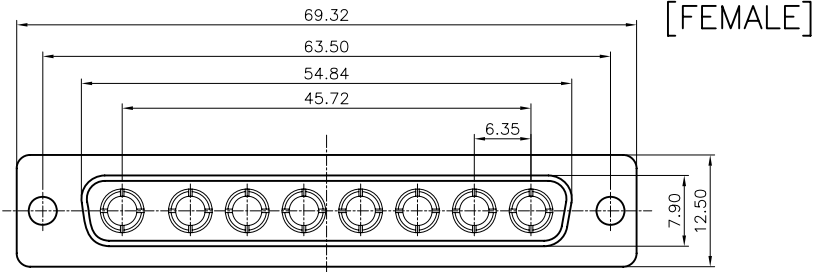
REV.	DESCRIPTION	DRAWN	CHECKED	APPROVED
A	NEW RELEASE	LJC 01/17/09'	~	

NOTES:

- ELECTRICAL CHARACTERISTICS:
  - CONTACT RESISTANCE: 20mΩ Max. INITIAL.
  - DIELECTRIC WITHSTANDING VOLTAGE: 500V AC(rms)FOR 1 MINUTE.
  - INSULATION RESISTANCE: 1000MΩ Min.
  - CURRENT RATING: 5A/40A(POWER PIN).
  - VOLTAGE RATING: 300V
- ENVIRONMENT CHARACTERISTICS:
  - TEMPERATURE RANGE: -40° C ~ +105° C.
- MECHANICAL CHARACTERISTICS:
  - DURABILITY: 500 CYCLES.
  - CONTACT RETENTION FORCE: 1Kgf MINIMUM.
- MATERIALS:
  - SHELL: SPCC.
  - CONTACT: COPPER ALLOY.
  - INSULATOR: THERMOPLASTIC UL 94V-0, GLASS FIBER FILLED.
- PART NUMBER CODE:

DS1034-21- X X X X X X

- SCREW DIM. A
- S: Standard(W/O nut)
- 4: 4.80
- 5: 5.80
- SCREW TYPE
- S: Standard(W/O nut)
- 1: CC TYPE
- 2: CS TYPE
- 3: BR TYPE
- 4: BRJ TYPE DIM. B:6.00 C: 3~4mm
- 5: BRJ TYPE DIM. B:6.00 C: 5~6mm
- CONTACT PLATING
- 8: FULL GOLD FLASH
- SHELL PLATING
- N: FORNT SHELL NICKEL, BACK SHELL TIN
- HOUSING COLOR
- B: BLACK
- CONNECTOR TYPE
- M: MALE
- F: FEMALE



GENERAL TOLERANCE		ANGLE TOLERANCE	
X.	±0.60	X.	±5°
.X	±0.38	.X	±3°
.XX	±0.25	.XX	±2°

DRAWING TYPE	CUSTOMER		
SCALE	1:1	SHEET	1 OF 1
DRAWING NO.	C-DS1034-21-XXXX-A		

PROJECTION		TITLE	MACHINE PIN D-SUB 8P
UNITS	mm		V/T TYPE
SHEET SIZE	A4	SERIES	DS1034-21 SERIES

**晨翔电子有限公司**  
**CONNFLY CONNFLY ELECTRONIC CO. LTD**

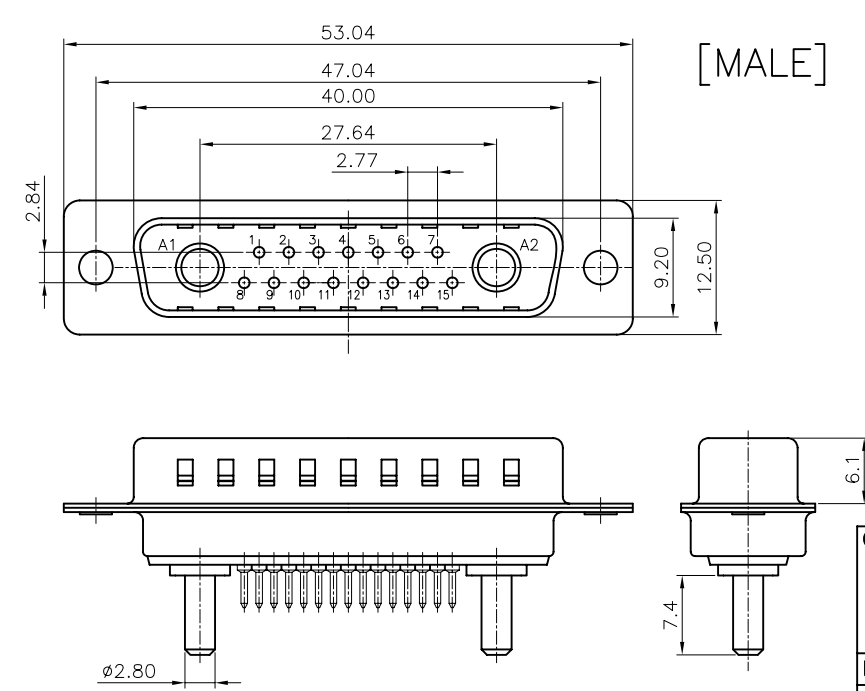
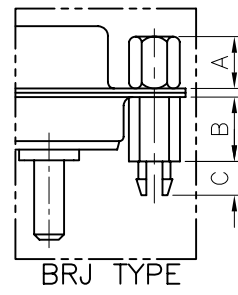
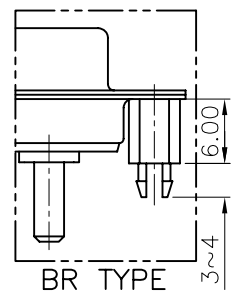
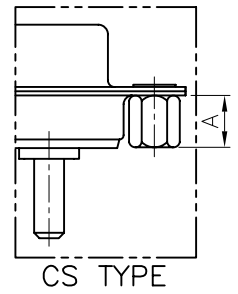
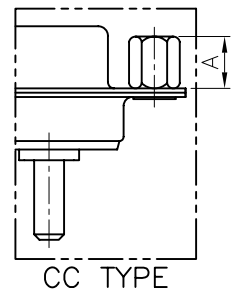
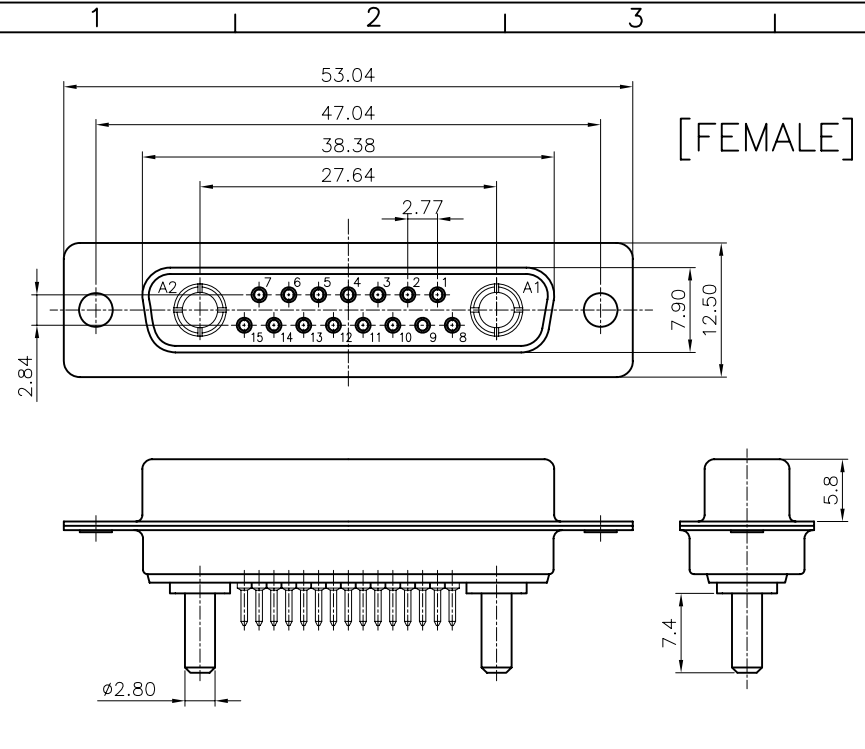
REV.	DESCRIPTION	DRAWN	CHECKED	APPROVED
A	NEW RELEASE	LJC 01/17/09'	~	

NOTES:

- ELECTRICAL CHARACTERISTICS:
  - CONTACT RESISTANCE: 20mΩ Max. INITIAL.
  - DIELECTRIC WITHSTANDING VOLTAGE: 500V AC(rms)FOR 1 MINUTE.
  - INSULATION RESISTANCE: 1000MΩ Min.
  - CURRENT RATING: 5A/40A(POWER PIN).
  - VOLTAGE RATING: 300V
- ENVIRONMENT CHARACTERISTICS:
  - TEMPERATURE RANGE: -40° C ~ +105° C.
- MECHANICAL CHARACTERISTICS:
  - DURABILITY: 500 CYCLES.
  - CONTACT RETENTION FORCE: 1Kgf MINIMUM.
- MATERIALS:
  - SHELL: SPCC.
  - CONTACT: COPPER ALLOY.
  - INSULATOR: THERMOPLASTIC UL 94V-0, GLASS FIBER FILLED.
- PART NUMBER CODE:

DS1034-14- X X X X X X

- SCREW DIM. A
  - S: Standard(W/O nut)
  - 4: 4.80
  - 5: 5.80
- SCREW TYPE
  - S: Standard(W/O nut)
  - 1: CC TYPE
  - 2: CS TYPE
  - 3: BR TYPE
  - 4: BRJ TYPE DIM. B:6.00 C: 3~4mm
  - 5: BRJ TYPE DIM. B:6.00 C: 5~6mm
- CONTACT PLATING
  - 8: FULL GOLD FLASH
- SHELL PLATING
  - N: FORNT SHELL NICKEL, BACK SHELL TIN
- HOUSING COLOR
  - B: BLACK
- CONNECTOR TYPE
  - M: MALE
  - F: FEMALE

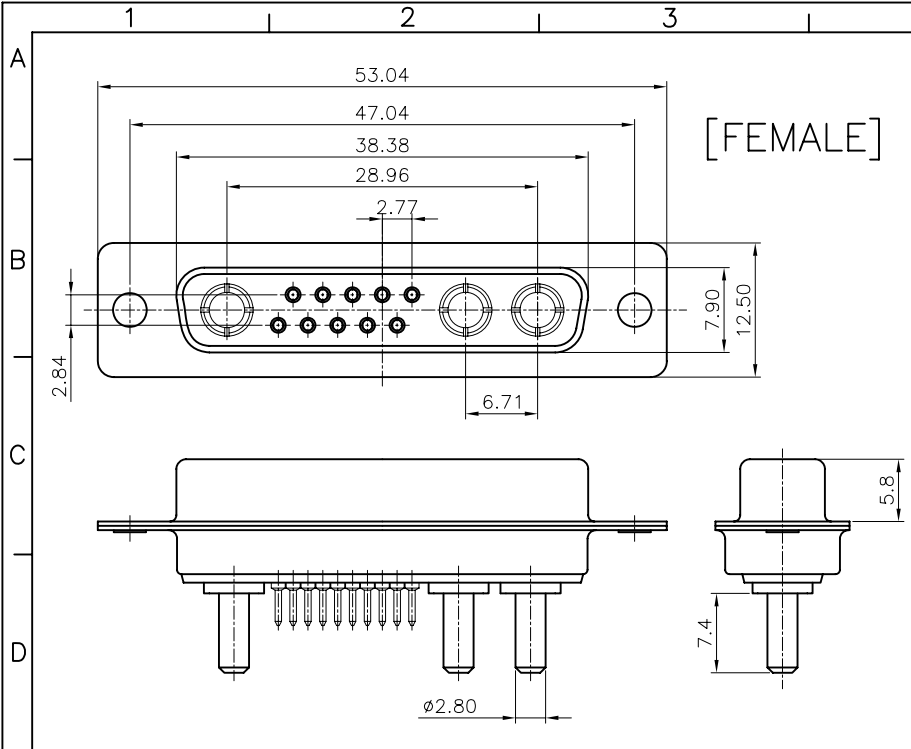


GENERAL TOLERANCE		ANGLE TOLERANCE	
X.	±0.60	X.	±5°
.X	±0.38	.X	±3°
.XX	±0.25	.XX	±2°
DRAWING TYPE		CUSTOMER	
SCALE		1:1	SHEET 1 OF 1
DRAWING NO.		C-DS1034-14-XXXX-A	

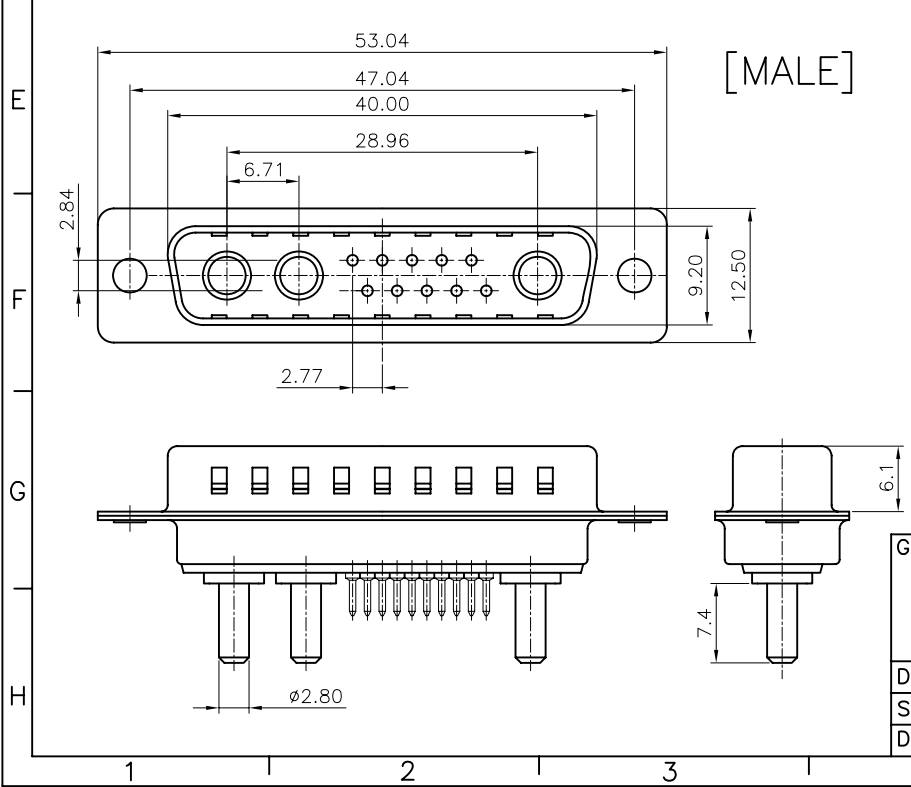
PROJECTION	TITLE	MACHINE PIN D-SUB 15+2	
mm		V/T TYPE	
SHEET SIZE	A4	SERIES	DS1034-14 SERIES

**晨翔电子有限公司**  
**CONNFLY CONNFLY ELECTRONIC CO. LTD**

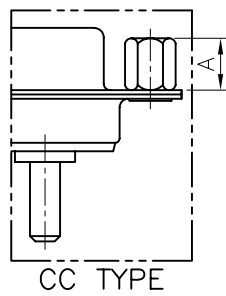




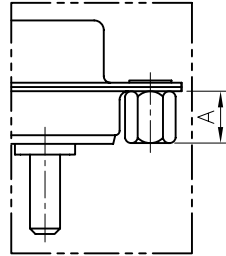
[FEMALE]



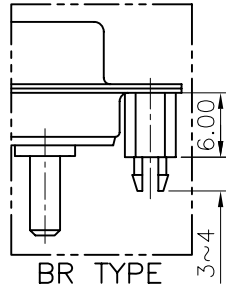
[MALE]



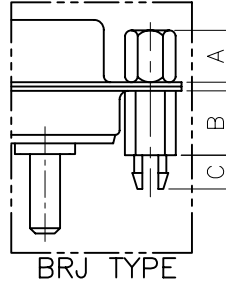
CC TYPE



CS TYPE



BR TYPE



BRJ TYPE

REV.	DESCRIPTION	DRAWN	CHECKED	APPROVED
A	NEW RELEASE	LJC 01/17/09'	~	

NOTES:

- ELECTRICAL CHARACTERISTICS:
  - CONTACT RESISTANCE: 20mΩ Max. INITIAL.
  - DIELECTRIC WITHSTANDING VOLTAGE: 500V AC(rms)FOR 1 MINUTE.
  - INSULATION RESISTANCE: 1000MΩ Min.
  - CURRENT RATING: 5A/40A(POWER PIN).
  - VOLTAGE RATING: 300V
- ENVIRONMENT CHARACTERISTICS:
  - TEMPERATURE RANGE: -40° C ~ +105° C.
- MECHANICAL CHARACTERISTICS:
  - DURABILITY: 500 CYCLES.
  - CONTACT RETENTION FORCE: 1Kgf MINIMUM.
- MATERIALS:
  - SHELL: SPCC.
  - CONTACT: COPPER ALLOY.
  - INSULATOR: THERMOPLASTIC UL 94V-0, GLASS FIBER FILLED.
- PART NUMBER CODE:

DS1034-15- X X X X X X  
 SCREW DIM. A  
 S: Standard(W/O nut)  
 4: 4.80  
 5: 5.80  
 SCREW TYPE  
 S: Standard(W/O nut)  
 1: CC TYPE  
 2: CS TYPE  
 3: BR TYPE  
 4: BRJ TYPE DIM. B:6.00 C: 3~4mm  
 5: BRJ TYPE DIM. B:6.00 C: 5~6mm  
 CONTACT PLATING  
 8: FULL GOLD FLASH  
 SHELL PLATING  
 N: FORNT SHELL NICKEL, BACK SHELL TIN  
 HOUSING COLOR  
 B: BLACK  
 CONNECTOR TYPE  
 M: MALE  
 F: FEMALE

GENERAL TOLERANCE		ANGLE TOLERANCE	
X.	±0.60	X.	±5°
.X	±0.38	.X	±3°
.XX	±0.25	.XX	±2°
DRAWING TYPE		CUSTOMER	
SCALE	1:1	SHEET	1 OF 1
DRAWING NO.	C-DS1034-15-XXXX-A		

PROJECTION	TITLE	MACHINE PIN D-SUB 10+3	
mm		V/T	
SHEET SIZE	SERIES	DS1034-15 SERIES	

**晨翔电子有限公司**  
**CONNFLY CONNFLY ELECTRONIC CO. LTD**

REV.	DESCRIPTION	DRAWN	CHECKED	APPROVED
A	NEW RELEASE	YCH 03/15/10'		

NOTES:

- ELECTRICAL CHARACTERISTICS:
  - CONTACT RESISTANCE: 20mΩ Max. INITIAL.
  - DIELECTRIC WITHSTANDING VOLTAGE: 500V AC(rms) FOR 1 MINUTE.
  - INSULATION RESISTANCE: 1000MΩ Min.
- ENVIRONMENT CHARACTERISTICS:
  - TEMPERATURE RANGE: -40°C~+105°C.
- PART NUMBER: DS1034-22
- PRODUCT NUMBER CODE:

DS1034-22- X X X X X X X X

SCREW DIM. A  
 S: Standard(W/O nut)  
 1: 5.00  
 2: 3.00  
 3: 5.20  
 4: 4.80  
 5: 5.80  
 6: 4.00  
 7: 4.80mm(Inside thread M2.6\*0.45p, outside thread unc#4-40)

SCREW TYPE  
 S: Standard(W/O nut)  
 1: CC TYPE  
 2: CS TYPE  
 3: BR TYPE  
 4: BRJ TYPE DIM. B:6.00 C: 3~4mm  
 5: BRJ TYPE DIM. B:6.00 C: 5~6mm  
 6: BRJ TYPE DIM. B:6.00 C: 3~4mm (Inside thread M2.6\*0.45p, outside thread unc#4-40)

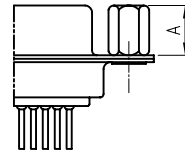
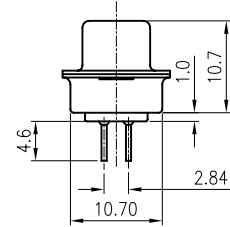
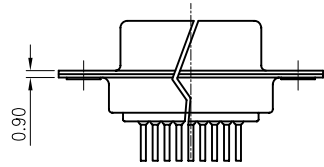
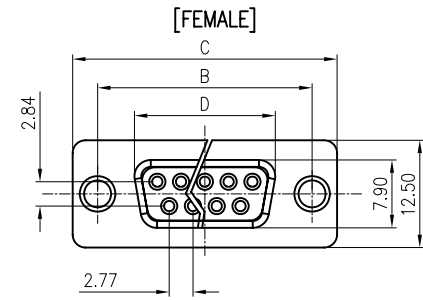
CONTACT PLATING  
 8: FULL GOLD FLASH  
 C: FULL 3u" GOLD  
 J: FULL 5u" GOLD

SHELL PLATING  
 T: FORNT & BACK SHELL TIN  
 N: FORNT SHELL NICKEL, BACK SHELL TIN

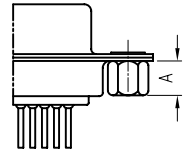
HOUSING COLOR  
 B: BLACK  
 W: WHITE  
 U: BLUE

CONNECTOR TYPE  
 M: MALE  
 F: FEMALE

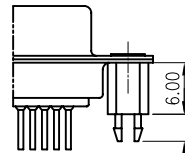
No.OF CONTACTS  
 09: 9pos. 25: 25pos.  
 15: 15pos. 37: 37pos.



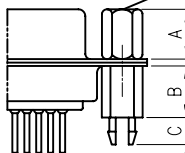
CC TYPE



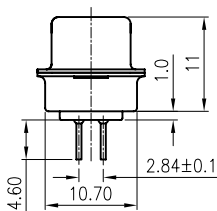
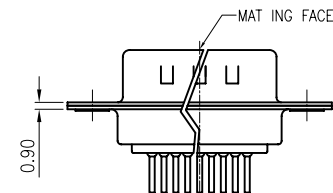
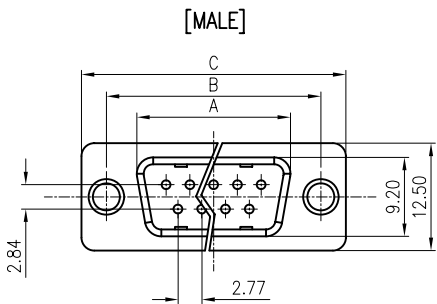
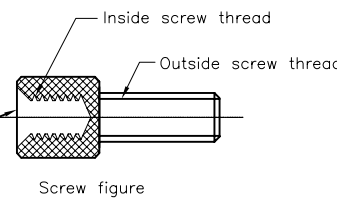
CS TYPE



BR TYPE



BRJ TYPE



Dimension

Position	A±0.2	B±0.2	C±0.3	D
9	17.90	24.99	30.80	16.33
15	26.50	33.32	39.14	24.66
25	40.00	47.04	53.04	38.38
37	56.50	63.50	69.32	54.84

GENERAL TOLERANCE		ANGLE TOLERANCE	
X.	±0.60	X.	±5'
.X	±0.38	.X	±3'
.XX	±0.25	.XX	±2'

DRAWING TYPE	CUSTOMER		
SCALE	1:1	SHEET	1 OF 1
DRAWING NO.	C-DS1034-22-XXXXXXX		

PROJECTION		TITLE
UNITS	mm	D-SUB DIP STRAIGHT (MACHINE PIN)TYPE
SHEET SIZE	A4	SERIES DS1034-22 SERIES

晨翔电子有限公司  
**CONNFLY CONNFLY ELECTRONIC CO. LTD**

REV.	DESCRIPTION	DRAWN	CHECKED	APPROVED
A	NEW RELEASE	YCH 08/18/07'	~	

NOTES:

- ELECTRICAL CHARACTERISTICS:
  - CONTACT RESISTANCE: 20mΩ Max. INITIAL.
  - DIELECTRIC WITHSTANDING VOLTAGE: 500V AC(rms) FOR 1 MINUTE.
  - INSULATION RESISTANCE: 1000MΩ Min.
- ENVIRONMENT CHARACTERISTICS:
  - OPERATING TEMPERATURE: 0°C~+85°C.
  - STORAGE TEMPERATURE: -20°C~+70°C.
- RESISTANCE TO SOLDERING HEAT: 260±5°C 5±0.5s.
- PRODUCT NUMBER CODE:

DS1034-23- X X X X X X X X

- DIM. H  
1: 10.00mm  
2: 11.80mm
- SCREW DIM. A  
X: W/O Screw  
4: 4.80  
5: 5.80
- SCREW TYPE  
X: W/O Fork  
3: BR TYPE  
4: BRJ TYPE (W/O washer)  
7: BRJ TYPE (W/ washer)
- CONTACT PLATING  
8: FULL GOLD FLASH  
C: FULL 3u" GOLD  
J: FULL 5u" GOLD
- SHELL PLATING  
T: FORNT & BACK SHELL TIN  
N: FORNT SHELL NICKEL, BACK SHELL TIN
- HOUSING COLOR  
B: BLACK  
W: WHITE  
U: BLUE
- CONNECTOR TYPE  
M: MALE  
F: FEMALE
- No.OF CONTACTS  
09: 9pos. 25: 25pos.  
15: 15pos. 37: 37pos.

Dimension

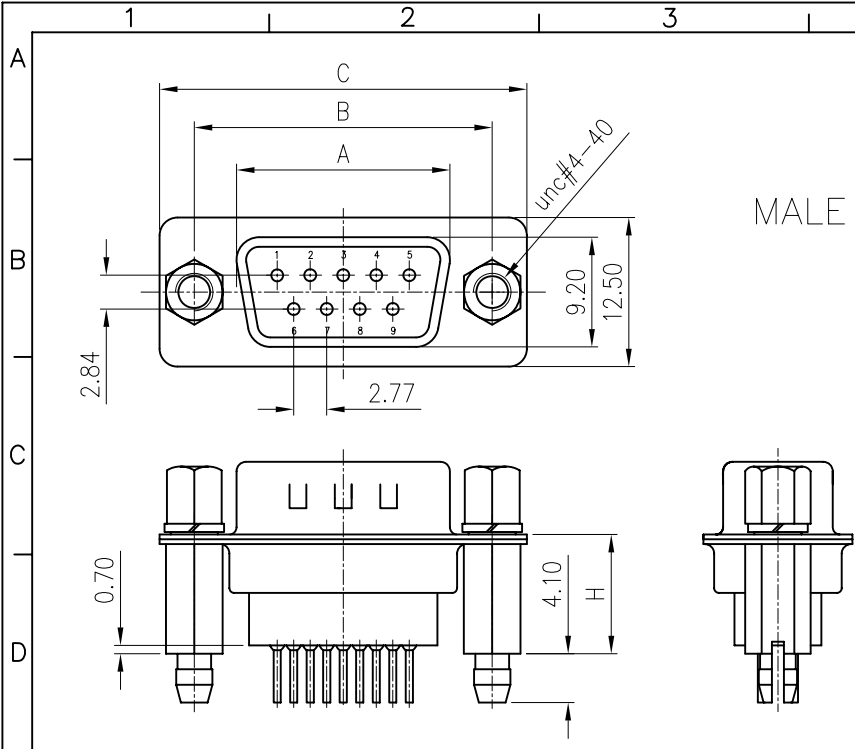
Position	A±0.2	B±0.2	C±0.3	D
9	17.90	24.99	30.80	16.33
15	26.50	33.32	39.14	24.66
25	40.00	47.04	53.04	38.38
37	56.50	63.50	69.32	54.84

GENERAL TOLERANCE		ANGLE TOLERANCE	
X.	±0.60	X.	±5'
.X	±0.38	.X	±3'
.XX	±0.25	.XX	±2'

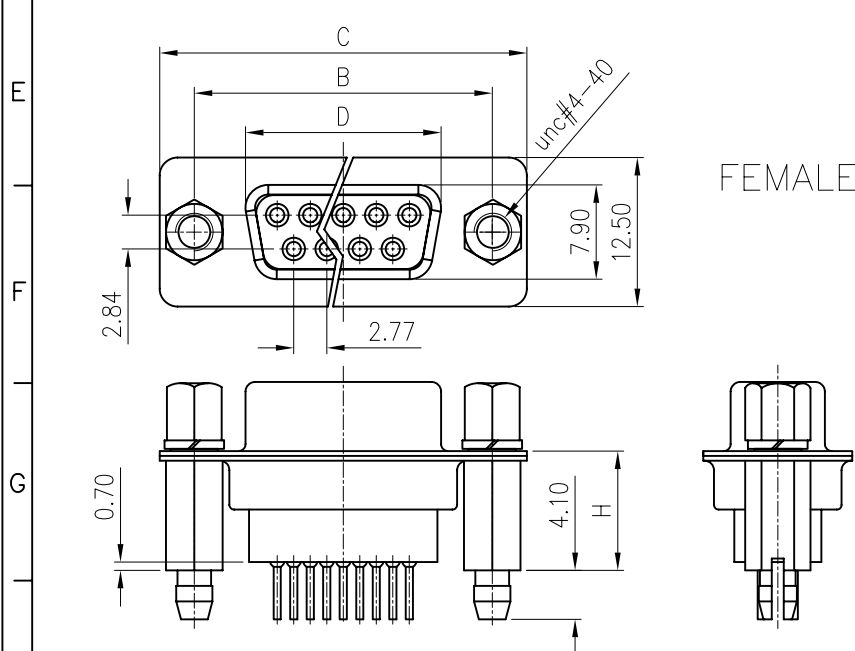
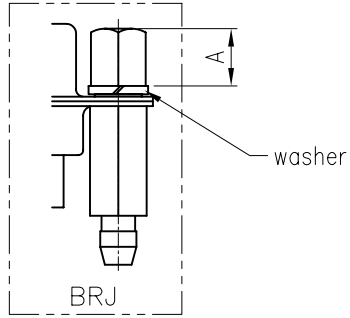
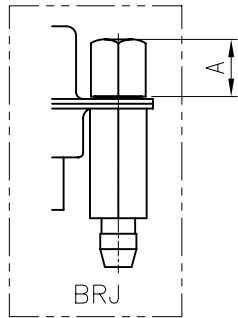
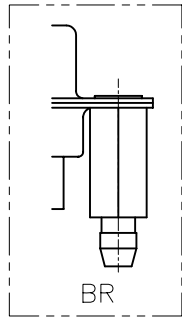
PROJECTION	TITLE	D-SUB DIP STRAIGHT WITH FORK TYPE (MACHINE PIN)	
UNITS	mm		
SHEET SIZE	A4	SERIES	DS1034-23 SERIES

DRAWING TYPE	CUSTOMER		
SCALE	1:1	SHEET	1 OF 1
DRAWING NO.	C-DS1034-23-XXXXXXX		

晨翔电子有限公司  
**CONNFLY CONNFLY ELECTRONIC CO. LTD**



MALE



FEMALE