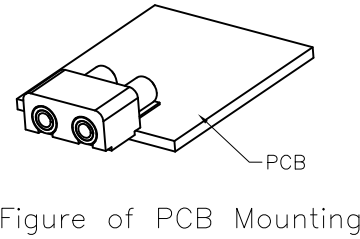
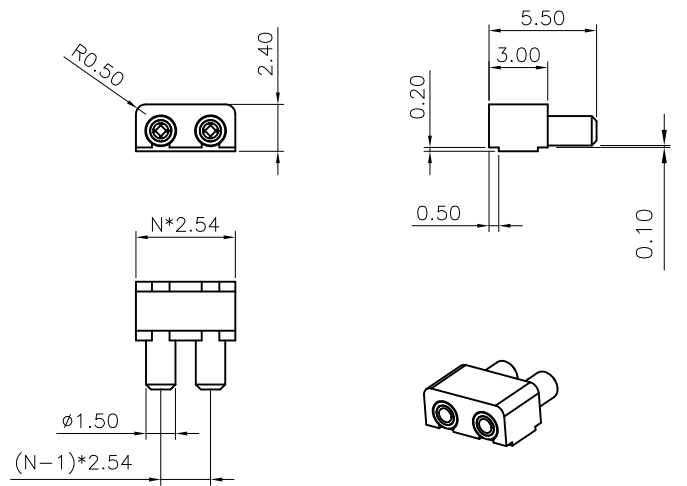


| REV. | DESCRIPTION | DRAWN | CHECKED | APPROVED |
|------|-------------|---------------|---------|----------|
| A | NEW RELEASE | LJC 11/18/11' | | |
| | | | | |
| | | | | |

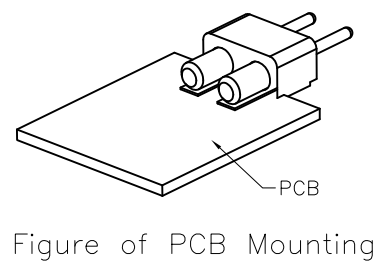
- NOTES:**
- Materials:**
 - Insulator: High Temperature 260°C, UL94-HB Rated, color of white or black, RoHS, REACH compliance.
 - Pin: Copper Alloy, Plating Matt Tin or Gold.
 - Clip: Beryllium Copper, C17200, Full Gold plating.
 - Specifications:**
 - Temperature Range: -55~+125°C.
 - Contact Resistance: 10mΩ maximum.
 - Insulation Resistance: 1000MΩ minimum.
 - Dielectric Withstanding Voltage: 500V AC 1 minute.
 - Voltage Rating: 100V AC/DC.
 - Current Rating: 1A max per pin.
 - Application insert pin: Ø0.45~Ø0.60mm.
 - Resistance to soldering heat: 260°C, 3-5seconds.
 - Durability: 1000 cycles min.



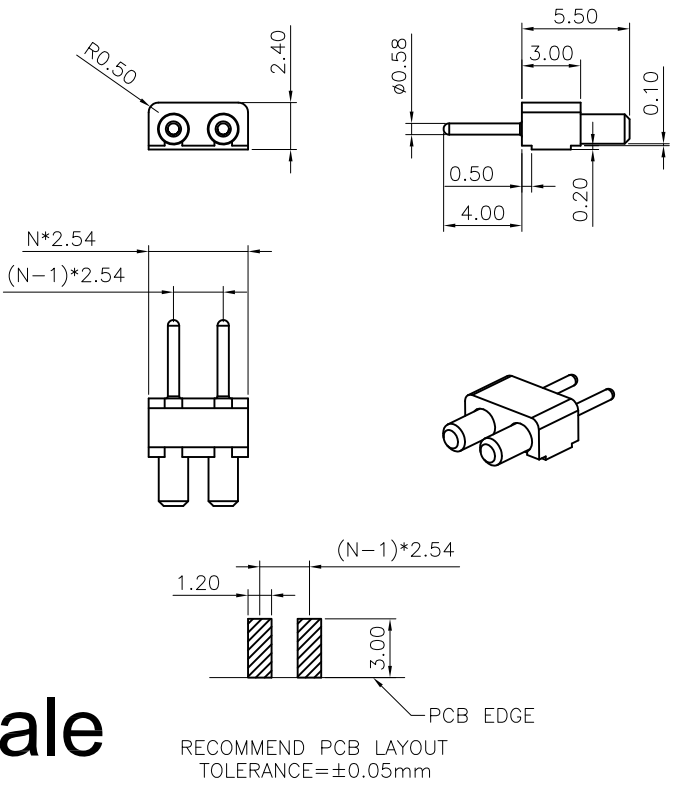
Female



- 3. Product Number Code:**
 DS1137 - X X X X X X
- Packing Type: R: Tape On Reel.
 - Clip plating(Female Only): 6: Full matt tin, 8: Full gold flash, C: Full 3u" gold.
 - Pin plating: 6: Full matt tin, 8: Full gold flash.
 - Housing Color: W: White, B: Black
 - Connector Type: F: Female, M: Male
 - No. of positions: 2: 2p ~ 10: 10p



Male



| GENERAL TOLERANCE | | ANGLE TOLERANCE | |
|-------------------|-------|-----------------|-----|
| X | ±0.60 | X | ±5° |
| .X | ±0.38 | .X | ±3° |
| .XX | ±0.25 | .XX | ±2° |

| | | | |
|--------------|-----------------|-------|--------|
| DRAWING TYPE | CUSTOMER | | |
| SCALE | 1:1 | SHEET | 1 OF 1 |
| DRAWING NO. | C-DS1137-XXXXXX | | |

| | | | |
|------------|----|--------|--|
| PROJECTION | | TITLE | 2.54mm LED Series Plug & Socket SMT Type Connector |
| UNITS | mm | SERIES | DS1137 SERIES |

晨翔电子有限公司
CONNFLY CONNFLY ELECTRONIC CO. LTD

| REV. | DESCRIPTION | DRAWN | CHECKED | APPROVED |
|------|-------------|---------------|---------|----------|
| A | NEW RELEASE | LJC 11/18/11' | | |
| | | | | |
| | | | | |

NOTES:

1.Materials:

- 1.1. Insulator: High Temperature 260°C,UL94-HB Rated, color of white or black.RoHS,REACH compliance.
- 1.2. Pin: Copper Alloy, Plating Matt Tin or Gold.
- 1.3. Clip: Beryllium Copper, C17200,Full Gold plating.

2.Specifications:

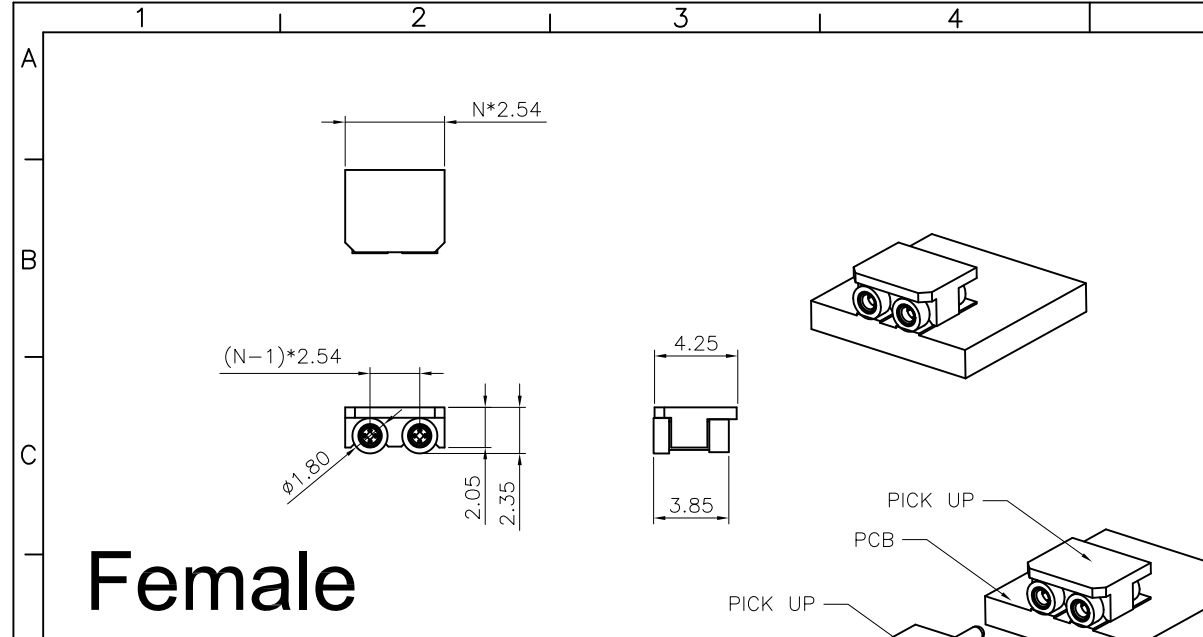
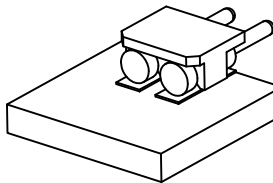
- 2.1. Temperature Range: -55~+125°C.
- 2.2. Contact Resistance: 10mΩ maximum.
- 2.3. Insulation Resistance: 1000MΩ minimum.
- 2.4. Dielectric Withstanding Voltage: 500V AC 1 minute.
- 2.5. Voltage Rating: 100V AC/DC.
- 2.6. Current Rating: 1A max per pin.
- 2.7. Application insert pin: Ø0.45~Ø0.60mm.
- 2.8. Resistance to soldering heat: 260°C,3-5seconds.
- 2.9. Durability: 1000 cycles min.

3. Product Number Code:

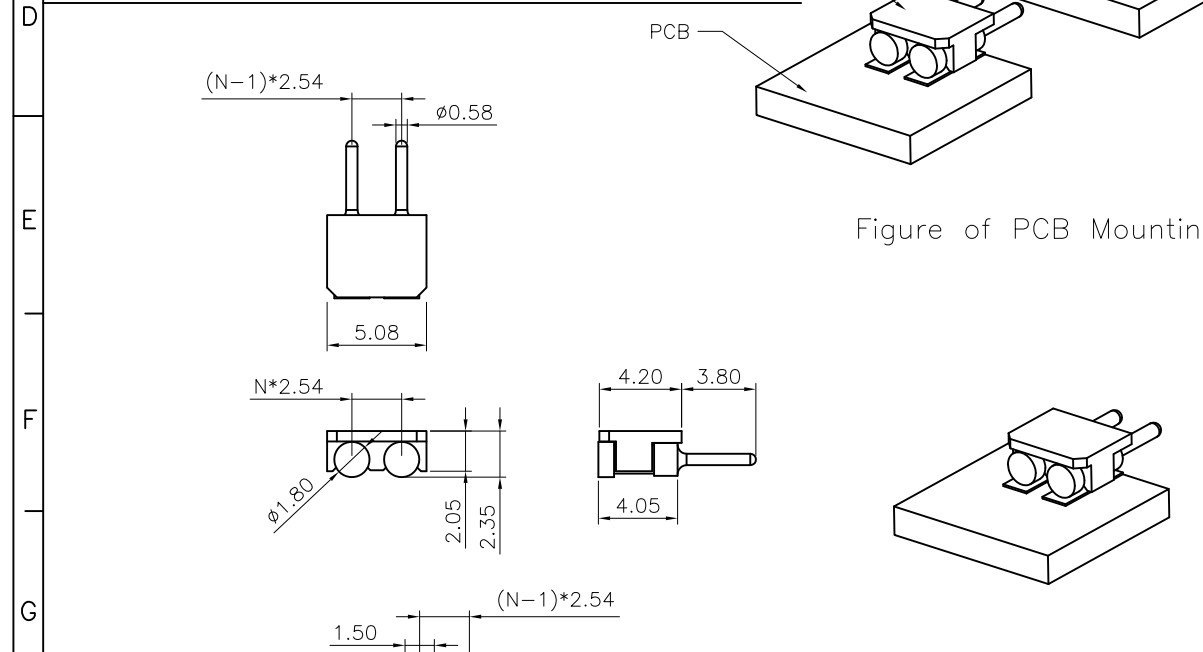
DS1137-01 - X X X X X X

- Packing Type
R: Tape On Reel.
- Clip plating(Female Only)
6: Full matt tin.
8: Full gold flash.
C: Full 3u" gold.
- Pin plating
6: Full matt tin.
8: Full gold flash.
- Housing Color
W: White
B: Black
- Connector Type
F: Female
M: Male
- No. of positions
2: 2p ~ 10: 10p

Figure of PCB Mounting



Female



Male

| GENERAL TOLERANCE | | ANGLE TOLERANCE | |
|-------------------|-------|-----------------|-----|
| X. | ±0.60 | X. | ±5° |
| .X | ±0.38 | .X | ±3° |
| .XX | ±0.25 | .XX | ±2° |

| | | | |
|--------------|--------------------|-------|--------|
| DRAWING TYPE | CUSTOMER | | |
| SCALE | 1:1 | SHEET | 1 OF 1 |
| DRAWING NO. | C-DS1137-01-XXXXXX | | |

| | | | |
|------------|----|--------|--|
| PROJECTION | | TITLE | 2.54mm LED Series Plug & Socket SMT Type Connector |
| UNITS | mm | SERIES | DS1137-01 SERIES |

晨翔电子有限公司
CONNFLY CONNFLY ELECTRONIC CO. LTD

| REV. | DESCRIPTION | DRAWN | CHECKED | APPROVED |
|------|-------------|---------------|---------|----------|
| A | NEW RELEASE | LJC 07/20/12' | | |
| | | | | |
| | | | | |

NOTES:

1.Materials:

- 1.1. Insulator: High Temperature 260°C,UL94-HB Rated, color of white or black.RoHS,REACH compliance.
- 1.2. Pin: Copper Alloy, Plating Matt Tin or Gold.
- 1.3. Clip: Beryllium Copper, C17200,Full Gold plating.

2.Specifications:

- 2.1. Temperature Range: -55~+125°C.
- 2.2. Contact Resistance: 10mΩ maximum.
- 2.3. Insulation Resistance: 1000MΩ minimum.
- 2.4. Dielectric Withstanding Voltage: 500V AC 1 minute.
- 2.5. Voltage Rating: 100V AC/DC.
- 2.6. Current Rating: 1A max per pin.
- 2.7. Application insert pin: Ø0.45~Ø0.60mm.
- 2.8. Resistance to soldering heat: 260°C,3-5seconds.
- 2.9. Durability: 1000 cycles min.

3. Product Number Code:

DS1137-02 - X X X X X X

- Packing Type
R: Tape On Reel.
- Clip plating(Female Only)
6: Full matt tin.
8: Full gold flash.
C: Full 3u" gold.
- Pin plating
6: Full matt tin.
8: Full gold flash.
- Housing Color
W: White
B: Black
- Connector Type
F: Female
M: Male
- No. of positions
2: 2p ~ 10: 10p

Female

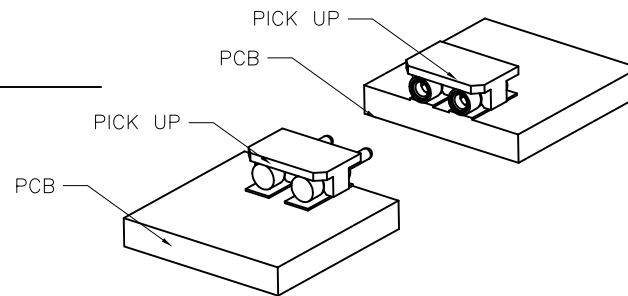
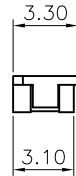
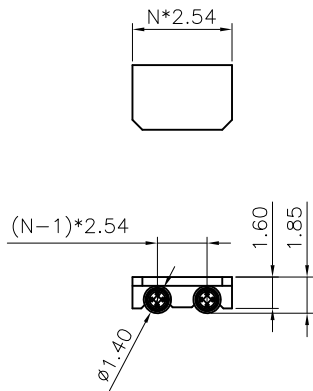
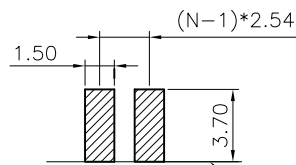
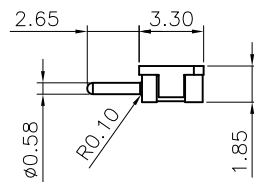
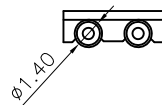
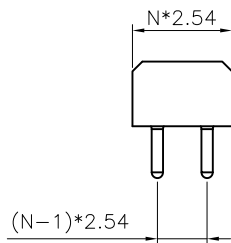


Figure of PCB Mounting




RECOMMEND PCB LAYOUT
TOLERANCE=±0.05mm

Male

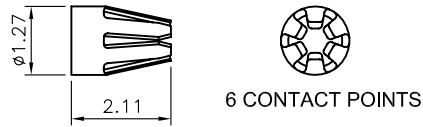
| GENERAL TOLERANCE | | ANGLE TOLERANCE | |
|-------------------|-------|-----------------|-----|
| X. | ±0.60 | X. | ±5° |
| .X | ±0.38 | .X | ±3° |
| .XX | ±0.25 | .XX | ±2° |

| DRAWING TYPE | CUSTOMER | | |
|--------------|----------------------|-------|--------|
| SCALE | 1:1 | SHEET | 1 OF 1 |
| DRAWING NO. | C-DS1137-02-XXXXXX-A | | |

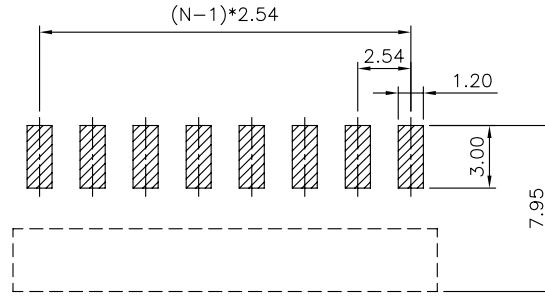
| PROJECTION | TITLE |
|------------|--|
| UNITS | 2.54mm LED Series Plug & Socket SMT Type Connector H=1.85mm |
| SHEET SIZE | SERIES DS1137-02 SERIES |

 **晨翔电子有限公司**
CONNFLY CONNFLY ELECTRONIC CO. LTD

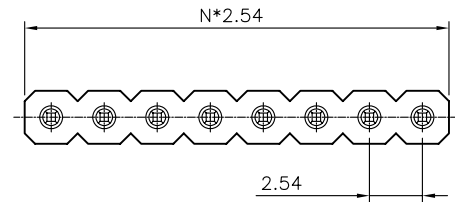
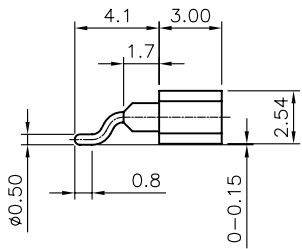
Female 6 Fingers



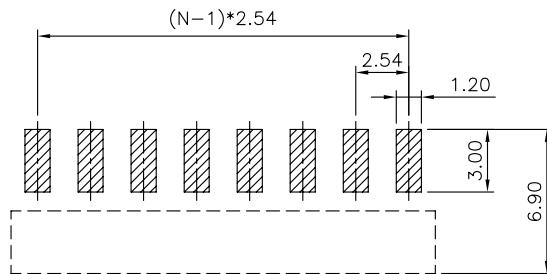
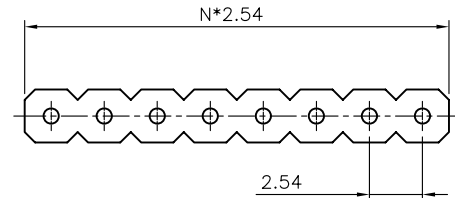
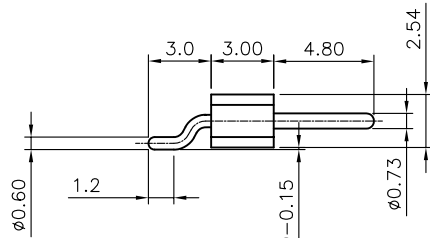
6 CONTACT POINTS



Recommended PCB Layout
Tolerance=±0.05



Male



Recommended PCB Layout
Tolerance=±0.05

| REV. | DESCRIPTION | DRAWN | CHECKED | APPROVED |
|------|-------------|---------------|---------|----------|
| A | NEW RELEASE | LJC 04/19/13' | | |
| | | | | |
| | | | | |

NOTES:

1.Materials:

- 1.1. Insulator: High Temperature 260°C,UL94-HB Rated, color of white or black.RoHS,REACH compliance.
- 1.2. Pin: Copper Alloy, Plating Matt Tin or Gold.
- 1.3. Clip: Beryllium Copper, C17200,Full Gold plating.

2.Specifications:

- 2.1. Temperature Range: -55~+125°C.(Full Gold Plating).
- 2.2. Contact Resistance: 10mΩ maximum.
- 2.3. Insulation Resistance: 1000MΩ minimum.
- 2.4. Dielectric Withstanding Voltage: 500V AC 1 minute.
- 2.5. Voltage Rating: 100V AC/DC.
- 2.6. Current Rating: 5A max per pin.
- 2.7. Application insert pin: Ø0.635~Ø0.889mm.
- 2.8. Resistance to soldering heat: 260°C,3-5seconds.
- 2.9. Durability: 1000 cycles min.

3. Product Number Code:

DS1137-04 - X X X X X X

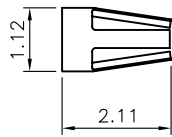
- Packing Type
R: Tape On Reel.
- Clip plating(Female Only)
6: Full matt tin.
8: Full gold flash.
C: Full 3u" gold.
- Pin plating
6: Full matt tin.
8: Full gold flash.
- Housing Color
W: White
B: Black
V: Ivory
- Connector Type
F: Female
M: Male
- No. of positions
1*1p ~ 1*40p

| GENERAL TOLERANCE | | ANGLE TOLERANCE | |
|-------------------|-------|-------------------|------------|
| X. | ±0.60 | X. | ±5° |
| .X | ±0.38 | .X | ±3° |
| .XX | ±0.25 | .XX | ±2° |
| DRAWING TYPE | | CUSTOMER | |
| SCALE | | 1:1 | SHEET 10F1 |
| DRAWING NO. | | C-DS1137-04-XXXXX | |

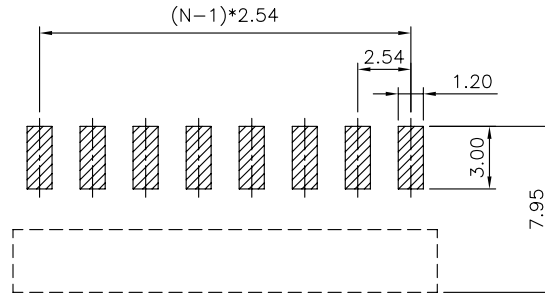
| PROJECTION | TITLE |
|------------|-----------------------------|
| | 2.54mm Led Series Connector |
| UNITS | SMT Type(Female 6 Fingers) |
| SHEET SIZE | SERIES DS1137-04 SERIES |

晨翔电子有限公司
CONNFLY® CONNFLY ELECTRONIC CO., LTD

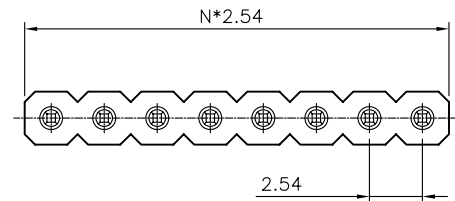
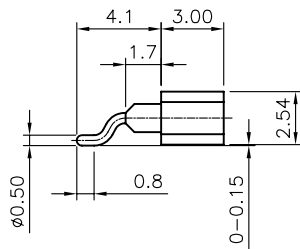
Female 4 Fingers



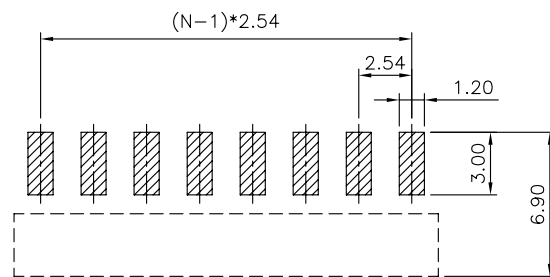
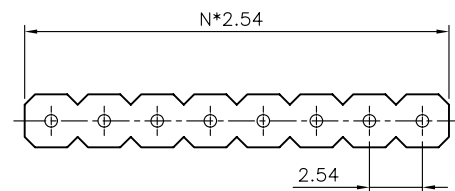
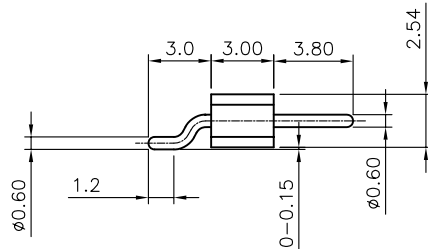
4 CONTACT POINTS



Recommended PCB Layout
Tolerance=±0.05



Male



Recommended PCB Layout
Tolerance=±0.05

| REV. | DESCRIPTION | DRAWN | CHECKED | APPROVED |
|------|-------------|---------------|---------|----------|
| A | NEW RELEASE | LJC 10/06/13' | | |
| | | | | |
| | | | | |

NOTES:

1.Materials:

- 1.1. Insulator: High Temperature 260°C,UL94-HB Rated, color of white or black,RoHS,REACH compliance.
- 1.2. Pin: Copper Alloy, Plating Matt Tin or Gold.
- 1.3. Clip: Beryllium Copper, C17200,Full Gold plating.

2.Specifications:

- 2.1. Temperature Range: -55~+125°C.(Full Gold Plating).
- 2.2. Contact Resistance: 10mΩ maximum.
- 2.3. Insulation Resistance: 1000MΩ minimum.
- 2.4. Dielectric Withstanding Voltage: 500V AC 1 minute.
- 2.5. Voltage Rating: 100V AC/DC.
- 2.6. Current Rating: 3A max per pin.
- 2.7. Application insert pin: Ø0.381~Ø0.635mm.
- 2.8. Resistance to soldering heat: 260°C,3-5seconds.
- 2.9. Durability: 1000 cycles min.

3. Product Number Code:

DS1137-05 - X X X X X X

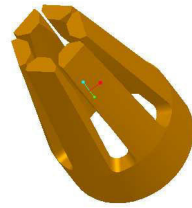
- Packing Type
R: Tape On Reel.
- Clip plating(Female Only)
6: Full matt tin.
8: Full gold flash.
C: Full 3u" gold.
- Pin plating
6: Full matt tin.
8: Full gold flash.
- Housing Color
W: White
B: Black
V: Ivory
- Connector Type
F: Female
M: Male
- No. of positions
1*1p ~ 1*40p

| GENERAL TOLERANCE | | ANGLE TOLERANCE | |
|-------------------|-------|--------------------|------------|
| X. | ±0.60 | X. | ±5° |
| .X | ±0.38 | .X | ±3° |
| .XX | ±0.25 | .XX | ±2° |
| DRAWING TYPE | | CUSTOMER | |
| SCALE | | 1:1 | SHEET 10F1 |
| DRAWING NO. | | C-DS1137-05-XXXXXX | |

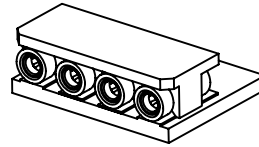
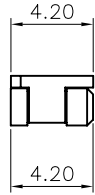
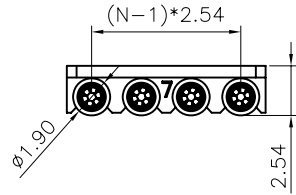
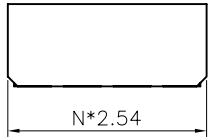
| PROJECTION | TITLE |
|------------|-----------------------------|
| | 2.54mm Led Series Connector |
| UNITS | SMT Type(Female 4 Fingers) |
| SHEET SIZE | SERIES DS1137-05 SERIES |

晨翔电子有限公司
CONNFLY® CONNFLY ELECTRONIC CO., LTD

| REV. | DESCRIPTION | DRAWN | CHECKED | APPROVED |
|------|-------------|---------------|---------|----------|
| A | NEW RELEASE | LJC 10/28/13' | | |
| | | | | |
| | | | | |



Clip=6 Fingers



NOTES:

1.Materials:

- 1.1. Insulator: High Temperature 260°C,UL94-V0
(For White Only UL94-HB Rated).RoHS,REACH compliance.
- 1.2. Pin: Copper Alloy, Plating Tin or Gold.
- 1.3. Clip: Beryllium Copper, C17200,Full Gold plating.

2.Specifications:

- 2.1. Temperature Range: -55~+125°C.
- 2.2. Contact Resistance: 10mΩ maximum.
- 2.3. Insulation Resistance: 1000MΩ minimum.
- 2.4. Dielectric Withstanding Voltage: 500V AC 1 minute.
- 2.5. Voltage Rating: 100V AC/DC.
- 2.6. Current Rating: 5A max per pin.
- 2.7. Application insert pin: Ø0.635~Ø0.889mm.
- 2.8. Resistance to soldering heat: 260°C,3-5seconds.
- 2.9. Durability: 1000 cycles min.

3. Product Number Code:

DS1137-07 - X X X X X X

- Packing Type
R: Tape On Reel.
- Clip plating(Female Only)
8: Full gold flash.
C: Full 3u" gold.
- Pin plating
6: Full tin.
8: Full gold flash.
- Housing Color
W: White
B: Black
V: Ivory
- Connector Type
F: Female
M: Male
- No. of positions
2: 2p ~ 10: 10p

Female

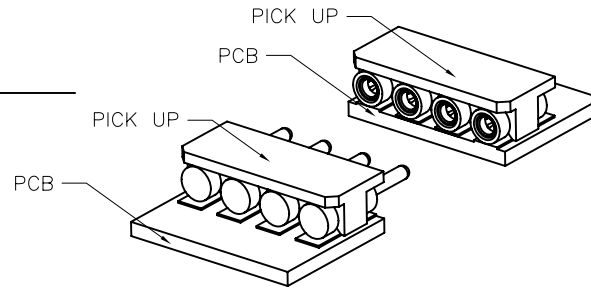
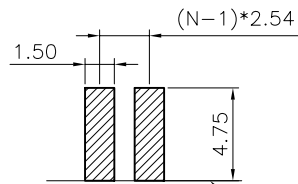
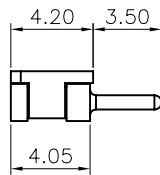
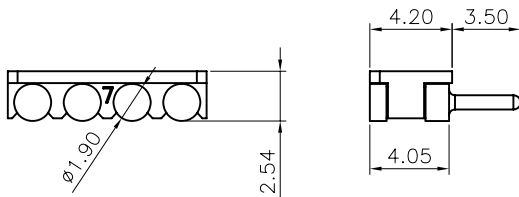
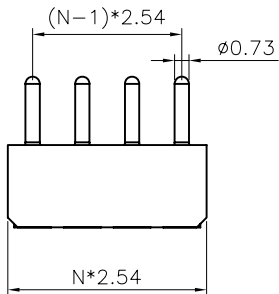


Figure of PCB Mounting



RECOMMEND PCB LAYOUT
TOLERANCE=±0.05mm

Male

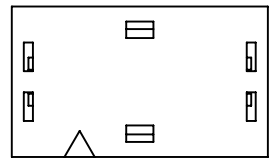
| GENERAL TOLERANCE | | ANGLE TOLERANCE | |
|-------------------|-------|-----------------|-----|
| X. | ±0.60 | X. | ±5° |
| .X | ±0.38 | .X | ±3° |
| .XX | ±0.25 | .XX | ±2° |

| DRAWING TYPE | CUSTOMER | | |
|--------------|--------------------|-------|--------|
| SCALE | 1:1 | SHEET | 1 OF 1 |
| DRAWING NO. | C-DS1137-07-XXXXXX | | |

| PROJECTION | TITLE |
|------------|--|
| mm | 2.54mm LED Series Plug & Socket SMT Type Connector H=2.54mm |
| SHEET SIZE | SERIES |
| A4 | DS1137-07 SERIES |

 晨翔电子有限公司
CONNFLY CONNFLY ELECTRONIC CO., LTD

| REV. | DESCRIPTION | DRAWN | CHECKED | APPROVED |
|------|-------------|---------------|---------|----------|
| A | NEW RELEASE | LJC 10/28/13' | | |
| | | | | |
| | | | | |



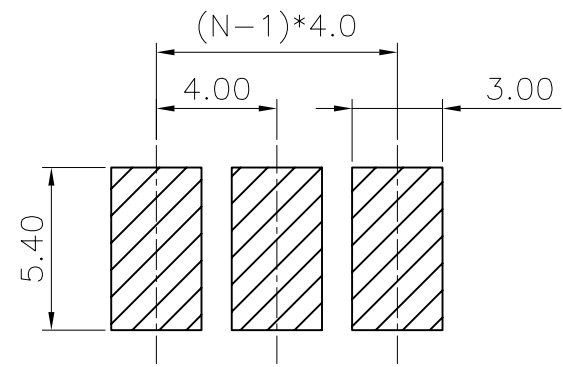
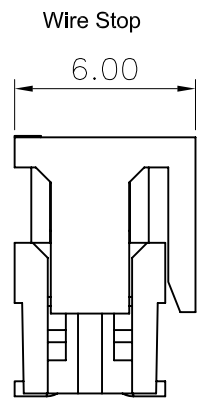
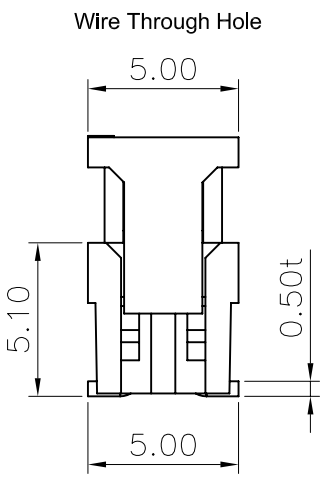
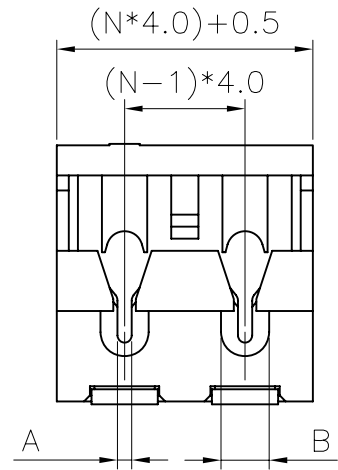
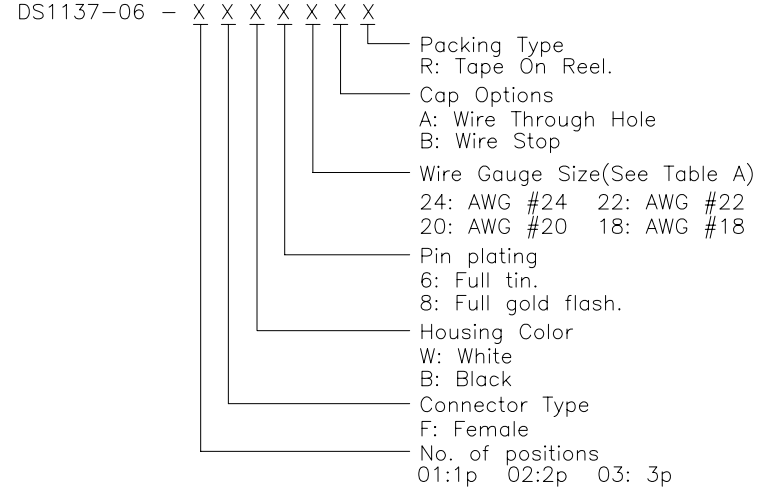
(Table A)

| Wire Gauge | Wire OD(Insulation) | A(mm) | B(mm) |
|------------|---------------------|-------|-------|
| AWG #24 | Ø1.1~1.6mm | 0.37 | 1.6 |
| AWG #22 | | 0.47 | |
| AWG #20 | Ø1.6~2.1mm | 0.60 | 2.1 |
| AWG #18 | | 0.72 | |

NOTES:

- Materials:
 - Insulator: High Temperature 260°C, UL94-HB or V0 Rated, color of white or black. RoHS, REACH compliance.
 - Pin: Phosphor Bronze, Plating Matt Tin or Gold.
- Specifications:
 - Temperature Range: -40~+105°C.
 - Contact Resistance: 20mΩ maximum.
 - Insulation Resistance: 1000MΩ minimum.
 - Dielectric Withstanding Voltage: 1000V AC 1 minute.
 - Voltage Rating: 320V AC/DC.
 - Current Rating: 9A max per pin.
 - Application Wire Range: AWG #24-18(0.2~0.75mm). Wire is Stranded Type.
 - Resistance to soldering heat: 260°C, 3-5seconds.
 - Durability: 3 cycles.
 - Packing Type: 13" Tape On Reel, 1000pcs/Reel(1,2,3p)
 - Wire Through Hole & Stop Optional.
 - Cover Together With Housing, Mounting to Cable is very Convenient.

3. Product Number Code:



RECOMMEND PCB LAYOUT
TOLERANCE=±0.05mm

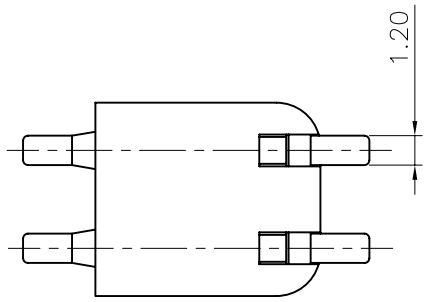
| GENERAL TOLERANCE | | ANGLE TOLERANCE | |
|-------------------|-------|-----------------|-----|
| X. | ±0.60 | X. | ±5° |
| .X | ±0.38 | .X | ±3° |
| .XX | ±0.25 | .XX | ±2° |

| | | | |
|--------------|---------------------|-------|--------|
| DRAWING TYPE | CUSTOMER | | |
| SCALE | 1:1 | SHEET | 1 OF 1 |
| DRAWING NO. | C-DS1137-06-XXXXXXX | | |

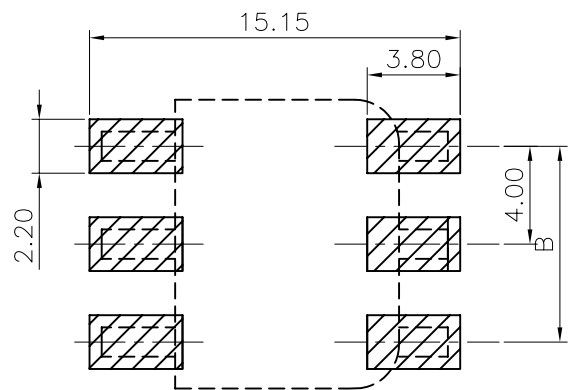
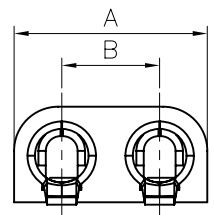
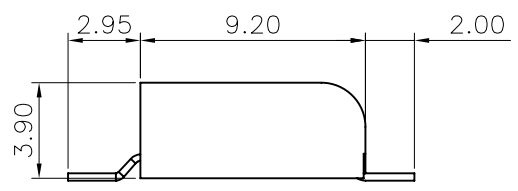
| | | | | |
|------------|----|--------|---|--|
| PROJECTION | | TITLE | 4.0mm LED Series IDC & SMT Type H=6.0mm | |
| UNITS | mm | SERIES | DS1137-06 SERIES | |

晨翔电子有限公司
CONNFLY CONNFLY ELECTRONIC CO., LTD

| REV. | DESCRIPTION | DRAWN | CHECKED | APPROVED |
|------|-------------|---------------|---------|----------|
| A | NEW RELEASE | LJC 10/28/13' | | |
| | | | | |
| | | | | |



| Positions | A(mm) | B(mm) |
|-----------|-------|-------|
| 1 | 3.90 | |
| 2 | 7.90 | 4.00 |
| 3 | 11.90 | 8.00 |



RECOMMEND PCB LAYOUT
TOLERANCE=±0.05mm

NOTES:

1.Materials:

- 1.1. Insulator: High Temperature 260°C,UL94-HB or V0 Rated, color of white or black.RoHS,REACH compliance.
- 1.2. Pin: Phosphor Bronze, Plating Matt Tin or Gold.

2.Specifications:

- 2.1. Temperature Range: -40~+105°C.
- 2.2. Contact Resistance: 20mΩ maximum.
- 2.3. Insulation Resistance: 1000MΩ minimum.
- 2.4. Dielectric Withstanding Voltage: 1000V AC 1 minute.
- 2.5. Voltage Rating: 320V AC/DC.
- 2.6. Current Rating: 9A max per pin.
- 2.7. Application Wire Range: AWG #24-18(0.2~0.75mm). Conductor is Single Type.
- 2.8. Resistance to soldering heat: 260°C,3-5seconds.
- 2.9. Durability: 1000 cycles min.
- 2.10. Packing Type: 13" Tape On Reel

3. Product Number Code:

DS1137-08 - X X X X X

- Packing Type
R: Tape On Reel.
- Pin plating
6: Full tin.
8: Full gold flash.
- Housing Color
W: White
B: Black
- Connector Type
F: Female
- No. of positions
01:1p 02:2p 03: 3p

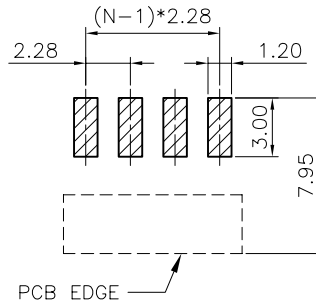
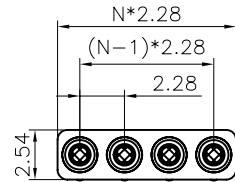
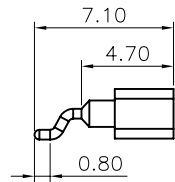
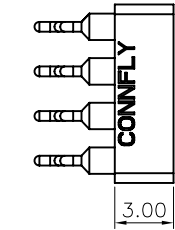
| GENERAL TOLERANCE | | ANGLE TOLERANCE | |
|-------------------|-------|-----------------|-----|
| X. | ±0.60 | X. | ±5° |
| .X | ±0.38 | .X | ±3° |
| .XX | ±0.25 | .XX | ±2° |

| | | | |
|------------|----|--------|--|
| PROJECTION | | TITLE | 4.0mm LED Series Socket SMT Type H=3.9mm, Conductor is Single Type. |
| UNITS | mm | | |
| SHEET SIZE | A4 | SERIES | DS1137-08 SERIES |

| | | | |
|--------------|-------------------|-------|--------|
| DRAWING TYPE | CUSTOMER | | |
| SCALE | 1:1 | SHEET | 1 OF 1 |
| DRAWING NO. | C-DS1137-08-XXXXX | | |

晨翔电子有限公司
CONNFLY CONNFLY ELECTRONIC CO., LTD

| REV. | DESCRIPTION | DRAWN | CHECKED | APPROVED |
|------|-------------|---------------|---------|----------|
| A | NEW RELEASE | LJC 10/28/13' | | |
| | | | | |
| | | | | |



RECOMMEND PCB LAYOUT
TOLERANCE=±0.05mm

Female

NOTES:

1.Materials:

- 1.1. Insulator: High Temperature 260°C,UL94-HB or V0 Rated, color of white or black.RoHS,REACH compliance.
- 1.2. Pin: Copper Alloy, Plating Matt Tin or Gold.
- 1.3. Clip: Beryllium Copper, C17200,Full Gold plating.

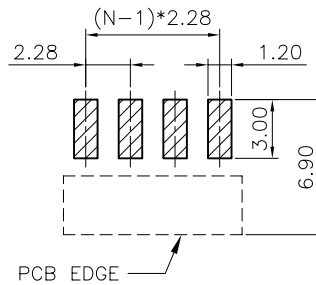
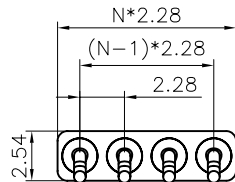
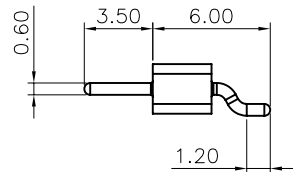
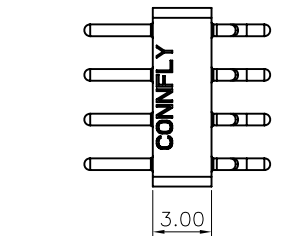
2.Specifications:

- 2.1. Temperature Range: -55~+125°C.(Full Gold Plating).
- 2.2. Contact Resistance: 10mΩ maximum.
- 2.3. Insulation Resistance: 1000MΩ minimum.
- 2.4. Dielectric Withstanding Voltage: 500V AC 1 minute.
- 2.5. Voltage Rating: 100V AC/DC.
- 2.6. Current Rating: 3A max per pin.
- 2.7. Application insert pin: Ø0.381~Ø0.635mm.
- 2.8. Resistance to soldering heat: 260°C,3-5seconds.
- 2.9. Durability: 1000 cycles min.
- 2.10. Insertion Force: 270g Maximum per Pin.
- 2.11. Withdrawal Force: 90g Minimum per Pin.
- 2.12. Packing Type: 13" Tape On Reel.

3. Product Number Code:

DS1137-09 - X X X X X X

- Packing Type
R: Tape On Reel.
- Clip plating(Female Only)
8: Full gold flash.
C: Full 3u" gold.
- Pin plating
6: Full tin.
8: Full gold flash.
- Housing Color
W: White
B: Black
V: Ivory
- Connector Type
F: Female
M: Male
- No. of positions
2: 2p ~ 10: 10p



RECOMMEND PCB LAYOUT
TOLERANCE=±0.05mm

Male

| GENERAL TOLERANCE | | ANGLE TOLERANCE | | PROJECTION | TITLE | |
|-------------------|-------|-----------------|-----|--------------------|---|-----------|
| X. | ±0.60 | X. | ±5° | | 2.28mm LED Series Male & Femle SMT Type | |
| .X | ±0.38 | .X | ±3° | mm | H=2.54mm(Clip = 4 Fingers) | |
| .XX | ±0.25 | .XX | ±2° | SHEET SIZE | A4 | |
| DRAWING TYPE | | | | CUSTOMER | SERIES | DS1137-09 |
| SCALE | | | | 1:1 | SHEET | 1 OF 1 |
| DRAWING NO. | | | | C-DS1137-09-XXXXXX | | |

晨翔电子有限公司
CONFLY CONFLY ELECTRONIC CO., LTD