

REV.	DESCRIPTION	DRAWN	CHECKED	APPROVED
A	NEW RELEASE	HP 07/09/05		

TECHNICAL DATA

1. MATERIAL

- . Pin(Outer Sleeve): Brass,Machined,CuZn38Pb2
- . Clip(Contact 4/6 Finger): Copper alloy,Heat Treated

2. ELECTRICAL

- . Current Rating: 3A Per Pin max.
- . Contact Resistance: $\leq 20m\Omega$ /contact.

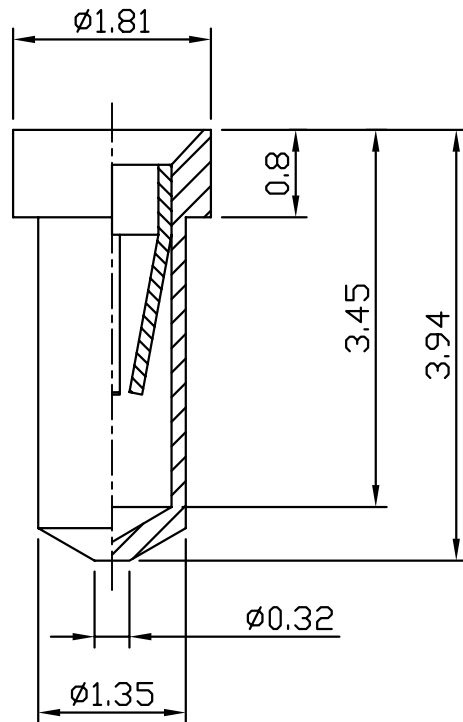
3. MECHANICAL

- . *Average Insertion Force With Steel Pin of $\phi 0.43mm/0.017"$:
4-Finger $\leq 270g$,6-Finger $\leq 120g$
- . *Average Withdrawal Force With Steel Pin of $\phi 0.50mm/0.020"$:
4-Finger $\geq 25g$,6-Finger $\geq 15g$.
- . *Mechanical Life: min 200 Cycles

4. PRODUCT NUMBER CODE:

DS1005-01 - X X X

- CLIP PLATED
 - 6: Full Tin
 - 8: Full Gold flash
 - C: Full Gold 3u"
 - A: Full Gold 10u"
 - B: Full Gold 15u"
- PIN PLATED
 - 6: Full Tin
 - 8: Full Gold flash
 - C: Full Gold 3u"
 - A: Full Gold 10u"
 - B: Full Gold 15u"
- CLIPS
 - 3: 3Finger
 - 4: 4Finger
 - 6: 6Finger
- SERIES NO
DS1005-01



GENERAL TOLERANCE		ANGLE TOLERANCE		PROJECTION		TITLE	SOCKET TERMINALS 3.94mm		
X.	± 0.20	X.	$\pm 2^\circ$	UNITS	mm				
.X	± 0.15	.X	$\pm 1^\circ$	SHEET SIZE	A4	SERIES	DS1005-01		
.XX	± 0.10	.XX	$\pm 0.5^\circ$						
DRAWING TYPE		CUSTOMER		晨翔电子有限公司 CONNFLY CONNFLY ELECTRONIC CO. LTD					
SCALE		1:1	SHEET						1 OF 1
DRAWING NO.		C-DS1005-01-XXX							

REV.	DESCRIPTION	DRAWN	CHECKED	APPROVED
A	NEW RELEASE	HP 07/11/05		

TECHNICAL DATA

1. MATERIAL

- . Pin(Outer Sleeve): Brass,Machined,CuZn38Pb2
- . Clip(Contact 4/6 Finger): Copper alloy,Heat Treated

2. ELECTRICAL

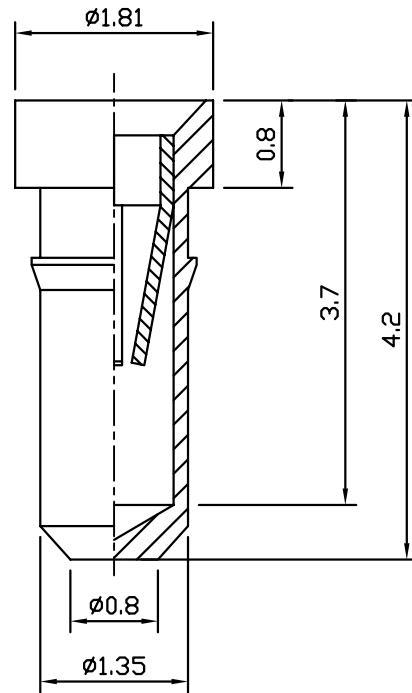
- . Current Rating: 3A Per Pin max.
- . Contact Resistance: $\leq 20m\Omega$

3. MECHANICAL

- . *Average Insertion Force With Steel Pin of $\phi 0.43mm/0.017"$:
4-Finger $\leq 270g$,6-Finger $\leq 120g$
- . *Average Withdrawal Force With Steel Pin of $\phi 0.50mm/0.020"$:
4-Finger $\geq 25g$,6-Finger $\geq 15g$
- . *Mechanical Life: min 200 Cycles

4. PRODUCT NUMBER CODE:

DS1005-02 - X X X



- CLIP PLATED
- 6: Full Tin
- 8: Full Gold flash
- C: Full Gold 3u"
- A: Full Gold 10u"
- B: Full Gold 15u"
- PIN PLATED
- 6: Full Tin
- 8: Full Gold flash
- C: Full Gold 3u"
- A: Full Gold 10u"
- B: Full Gold 15u"
- CLIPS
- 3: 3Finger
- 4: 4Finger
- 6: 6Finger
- SERIES NO
- DS1005-02

GENERAL TOLERANCE		ANGLE TOLERANCE		PROJECTION		TITLE	SOCKET TERMINALS 4.2mm	
X.	± 0.20	X.	$\pm 2^\circ$	UNITS	mm			
.X	± 0.10	.X	$\pm 1^\circ$	SHEET SIZE	A4	SERIES	DS1005-02	
.XX	± 0.05	.XX	$\pm 0.5^\circ$					
DRAWING TYPE		CUSTOMER			晨翔电子有限公司 CONNFLY CONNFLY ELECTRONIC CO. LTD			
SCALE		1:1	SHEET	1 OF 1				
DRAWING NO.		C-DS1005-02-XXX						

REV.	DESCRIPTION	DRAWN	CHECKED	APPROVED
A	NEW RELEASE	HP 07/11/05		

TECHNICAL DATA

1. MATERIAL

- . Pin(Outer Sleeve): Brass,Machined,CuZn38Pb2
- . Clip(Contact 4/6 Finger): Copper alloy,Heat Treated

2. ELECTRICAL

- . Current Rating: 3A Per Pin max.
- . Contact Resistance: $\leq 20m\Omega$ /Contact.

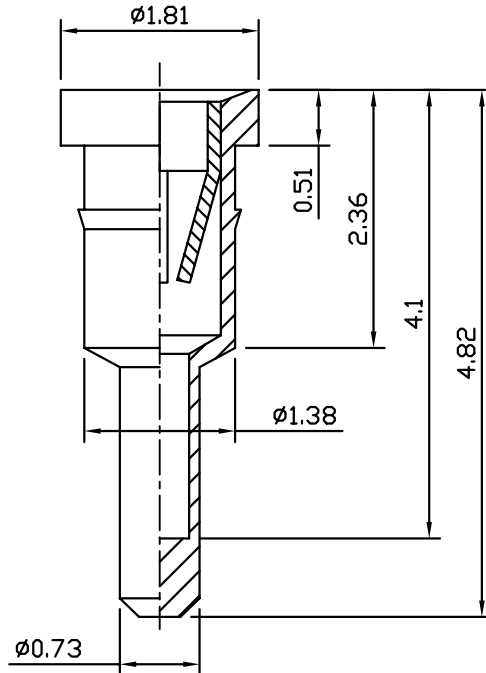
3. MECHANICAL

- . *Average Insertion Force With Steel Pin of $\phi 0.43mm/0.017''$:
4-Finger $\leq 270g$,6-Finger $\leq 120g$
- . *Average Withdrawal Force With Steel Pin of $\phi 0.50mm/0.020''$:
4-Finger $\geq 25g$,6-Finger $\geq 15g$
- . *Mechanical Life: min 200 Cycles

4. PRODUCT NUMBER CODE:

DS1005-03 - X X X

- CLIP PLATED
 - 6: Full Tin
 - 8: Full Gold flash
 - C: Full Gold 3u"
 - A: Full Gold 10u"
 - B: Full Gold 15u"
- PIN PLATED
 - 6: Full Tin
 - 8: Full Gold flash
 - C: Full Gold 3u"
 - A: Full Gold 10u"
 - B: Full Gold 15u"
- CLIPS
 - 3: 3Finger
 - 4: 4Finger
 - 6: 6Finger
- SERIES NO
DS1005-03



GENERAL TOLERANCE		ANGLE TOLERANCE		PROJECTION		TITLE	SOCKET TERMINALS 4.82mm		
X.	± 0.20	X.	$\pm 2^\circ$	UNITS	mm				
.X	± 0.10	.X	$\pm 1^\circ$	SHEET SIZE	A4	SERIES	DS1005-03		
.XX	± 0.05	.XX	$\pm 0.5^\circ$						
DRAWING TYPE		CUSTOMER		晨翔电子有限公司 CONNFLY CONNFLY ELECTRONIC CO. LTD					
SCALE		1:1	SHEET						1 OF 1
DRAWING NO.		C-DS1005-03-XXX							

REV.	DESCRIPTION	DRAWN	CHECKED	APPROVED
A	NEW RELEASE	HP 07/11/05		

TECHNICAL DATA

1. MATERIAL

- . Pin(Outer Sleeve): Brass,Machined,CuZn38Pb2
- . Clip(Contact 4/6 Finger): Copper alloy,Heat Treated

2. ELECTRICAL

- . Current Rating: 1A Per Pin max.
- . Contact Resistance: $\leq 20m\Omega$ /Contact

3. MECHANICAL

- . *Average Insertion Force With Steel Pin of $\phi 0.31mm/0.012''$:
6-Finger $\leq 120g$
- . *Average Withdrawal Force With Steel Pin of $\phi 0.31mm/0.012''$:
6-Finger $\geq 15g$
- . *Mechanical Life: min 200 Cycles

4. PRODUCT NUMBER CODE:

DS1005-04 - X X X

CLIP PLATED

- 6: Full Tin
- 8: Full Gold flash
- C: Full Gold 3u"
- A: Full Gold 10u"
- B: Full Gold 15u"

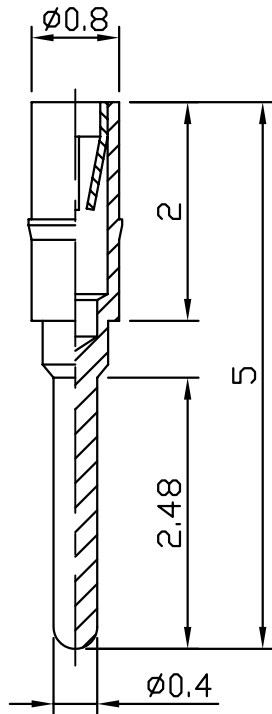
PIN PLATED

- 6: Full Tin
- 8: Full Gold flash
- C: Full Gold 3u"
- A: Full Gold 10u"
- B: Full Gold 15u"

CLIPS

- 3: 3Finger
- 4: 4Finger
- 6: 6Finger

SERIES NO
DS1005-04



GENERAL TOLERANCE		ANGLE TOLERANCE		PROJECTION		TITLE	SOCKET TERMINALS 5mm	
X.	± 0.20	X.	$\pm 2^\circ$	UNITS	mm			
.X	± 0.10	.X	$\pm 1^\circ$	SHEET SIZE	A4	SERIES	DS1005-04	
.XX	± 0.05	.XX	$\pm 0.5^\circ$					
DRAWING TYPE		CUSTOMER			晨翔电子有限公司 CONNFLY CONNFLY ELECTRONIC CO. LTD			
SCALE		1:1	SHEET	1 OF 1				
DRAWING NO.		C-DS1005-04-XXX						

REV.	DESCRIPTION	DRAWN	CHECKED	APPROVED
A	NEW RELEASE	HP 07/12/05		

TECHNICAL DATA

1. MATERIAL

- . Pin(Outer Sleeve): Brass,Machined,CuZn38Pb2
- . Clip(Contact 4/6 Finger): Copper alloy,Heat Treated

2. ELECTRICAL

- . Current Rating: 1A Per Pin max.
- . Contact Resistance: $\leq 20m\Omega$ /Contact

3. MECHANICAL

- . *Average Insertion Force With Steel Pin of $\phi 0.31mm/0.012''$:
6-Finger $\leq 120g$
- . *Average Withdrawal Force With Steel Pin of $\phi 0.31mm/0.012''$:
6-Finger $\geq 15g$
- . *Mechanical Life: min 200 Cycles

4. PRODUCT NUMBER CODE:

DS1005-05 - X X X

CLIP PLATED

- 6: Full Tin
- 8: Full Gold flash
- C: Full Gold 3u"
- A: Full Gold 10u"
- B: Full Gold 15u"

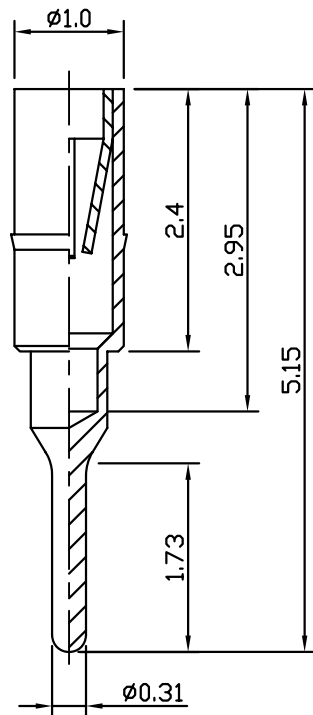
PIN PLATED

- 6: Full Tin
- 8: Full Gold flash
- C: Full Gold 3u"
- A: Full Gold 10u"
- B: Full Gold 15u"

CLIPS

- 3: 3Finger
- 4: 4Finger
- 6: 6Finger

SERIES NO
DS1005-05



GENERAL TOLERANCE		ANGLE TOLERANCE		PROJECTION		TITLE	SOCKET TERMINALS 5.15mm	
X.	± 0.20	X.	$\pm 2^\circ$	UNITS	mm			
.X	± 0.10	.X	$\pm 1^\circ$	SHEET SIZE	A4	SERIES	DS1005-05	
.XX	± 0.05	.XX	$\pm 0.5^\circ$	晨翔电子有限公司 CONNFLY CONNFLY ELECTRONIC CO. LTD				
DRAWING TYPE		CUSTOMER						
SCALE		1:1	SHEET 1 OF 1					
DRAWING NO.		C-DS1005-05-XXX						

REV.	DESCRIPTION	DRAWN	CHECKED	APPROVED
A	NEW RELEASE	HP 07/12/05		

TECHNICAL DATA

1. MATERIAL

- . Pin(Outer Sleeve): Brass,Machined,CuZn38Pb2
- . Clip(Contact 4/6 Finger): Copper alloy,Heat Treated

2. ELECTRICAL

- . Current Rating: 1A Per Pin max.
- . Contact Resistance: $\leq 20m\Omega$ /Contact.

3. MECHANICAL

- . *Average Insertion Force With Steel Pin of $\phi 0.31mm/0.012''$:
6-Finger $\leq 120g$
- . *Average Withdrawal Force With Steel Pin of $\phi 0.31mm/0.012''$:
6-Finger $\geq 15g$
- . *Mechanical Life: min 200 Cycles

4. PRODUCT NUMBER CODE:

DS1005-06 - X X X

CLIP PLATED

- 6: Full Tin
- 8: Full Gold flash
- C: Full Gold 3u"
- A: Full Gold 10u"
- B: Full Gold 15u"

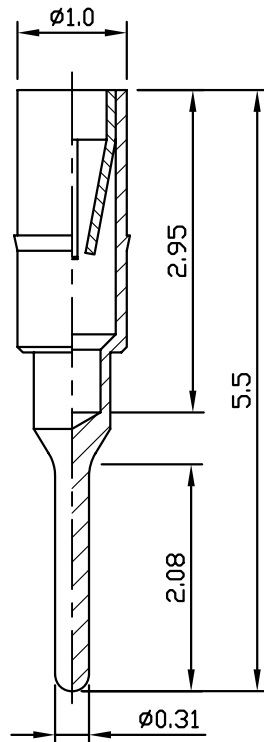
PIN PLATED

- 6: Full Tin
- 8: Full Gold flash
- C: Full Gold 3u"
- A: Full Gold 10u"
- B: Full Gold 15u"

CLIPS

- 3: 3Finger
- 4: 4Finger
- 6: 6Finger

SERIES NO
DS1005-06



GENERAL TOLERANCE		ANGLE TOLERANCE		PROJECTION		TITLE	SOCKET TERMINALS 5.5mm	
X.	± 0.20	X.	$\pm 2^\circ$	UNITS	mm			
.X	± 0.10	.X	$\pm 1^\circ$	SHEET SIZE	A4	SERIES	DS1005-06	
.XX	± 0.05	.XX	$\pm 0.5^\circ$	晨翔电子有限公司 CONNFLY CONNFLY ELECTRONIC CO. LTD				
DRAWING TYPE		CUSTOMER						
SCALE		1:1	SHEET 1 OF 1					
DRAWING NO.		C-DS1005-06-XXX						

REV.	DESCRIPTION	DRAWN	CHECKED	APPROVED
A	NEW RELEASE	HP 07/12/05		

TECHNICAL DATA

1. MATERIAL

- . Pin(Outer Sleeve): Brass,Machined,CuZn38Pb2
- . Clip(Contact 4/6 Finger): Copper alloy,Heat Treated

2. ELECTRICAL

- . Current Rating: 1A Per Pin max.
- . Contact Resistance: $\leq 20m\Omega$ /Contact.

3. MECHANICAL

- . *Average Insertion Force With Steel Pin of $\phi 0.31mm/0.012"$:
6-Finger $\leq 120g$
- . *Average Withdrawal Force With Steel Pin of $\phi 0.31mm/0.012"$:
6-Finger $\geq 15g$
- . *Mechanical Life: min 200 Cycles

4. PRODUCT NUMBER CODE:

DS1005-07 - X X X

CLIP PLATED

- 6: Full Tin
- 8: Full Gold flash
- C: Full Gold 3u"
- A: Full Gold 10u"
- B: Full Gold 15u"

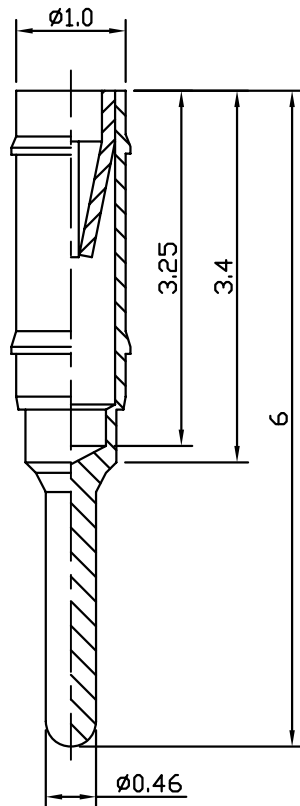
PIN PLATED

- 6: Full Tin
- 8: Full Gold flash
- C: Full Gold 3u"
- A: Full Gold 10u"
- B: Full Gold 15u"

CLIPS

- 3: 3Finger
- 4: 4Finger
- 6: 6Finger

SERIES NO
DS1005-07



GENERAL TOLERANCE		ANGLE TOLERANCE		PROJECTION		TITLE	SOCKET TERMINALS 6mm	
X.	± 0.20	X.	$\pm 2^\circ$	UNITS	mm			
.X	± 0.10	.X	$\pm 1^\circ$	SHEET SIZE	A4	SERIES	DS1005-07	
.XX	± 0.05	.XX	$\pm 0.5^\circ$	晨翔电子有限公司 CONNFLY CONNFLY ELECTRONIC CO. LTD				
DRAWING TYPE		CUSTOMER						
SCALE		1:1	SHEET 1 OF 1					
DRAWING NO.		C-DS1005-07-XXX						

REV.	DESCRIPTION	DRAWN	CHECKED	APPROVED
A	NEW RELEASE	HP 07/12/05		

TECHNICAL DATA

1. MATERIAL

- . Pin(Outer Sleeve): Brass,Machined,CuZn38Pb2
- . Clip(Contact 4/6 Finger): Copper alloy,Heat Treated

2. ELECTRICAL

- . Current Rating: 1A Per Pin max.
- . Contact Resistance: $\leq 20m\Omega$ /Contact.

3. MECHANICAL

- . *Average Insertion Force With Steel Pin of $\phi 0.43mm/0.017''$:
4-Finger $\leq 270g$,6-Finger $\leq 120g$
- . *Average Withdrawal Force With Steel Pin of $\phi 0.50mm/0.020''$:
4-Finger $\geq 25g$,6-Finger $\geq 15g$.
- . *Mechanical Life: min 200 Cycles

4. PRODUCT NUMBER CODE:

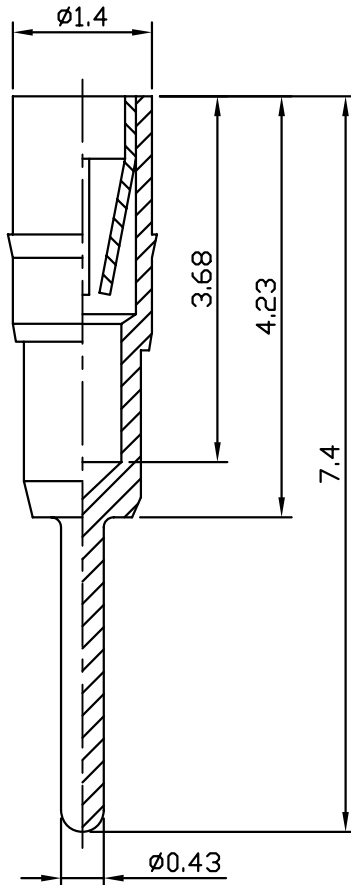
DS1005-08 - X X X

CLIP PLATED
6: Full Tin
8: Full Gold flash
C: Full Gold 3u"
A: Full Gold 10u"
B: Full Gold 15u"

PIN PLATED
6: Full Tin
8: Full Gold flash
C: Full Gold 3u"
A: Full Gold 10u"
B: Full Gold 15u"

CLIPS
3: 3Finger
4: 4Finger
6: 6Finger

SERIES NO
DS1005-08



GENERAL TOLERANCE		ANGLE TOLERANCE		PROJECTION		TITLE	SOCKET TERMINALS 7.4mm	
X.	± 0.20	X.	$\pm 2^\circ$	UNITS	mm			
.X	± 0.10	.X	$\pm 1^\circ$	SHEET SIZE	A4	SERIES	DS1005-08	
.XX	± 0.05	.XX	$\pm 0.5^\circ$					
DRAWING TYPE		CUSTOMER			晨翔电子有限公司 CONNFLY CONNFLY ELECTRONIC CO. LTD			
SCALE		1:1	SHEET	1 OF 1				
DRAWING NO.		C-DS1005-08-XXX						

REV.	DESCRIPTION	DRAWN	CHECKED	APPROVED
A	NEW RELEASE	HP 07/12/05'	~	LJC 07/12/05'
B	CHANGE THE DIM	YCH 08/17/13'	~	LJC 08/17/13'

TECHNICAL DATA

1. MATERIAL

- . Pin(Outer Sleeve): Brass,Machined,CuZn38Pb2
- . Clip(Contact 3/4/6 Finger): Copper alloy,Heat Treated

2. ELECTRICAL

- . Current Rating: 3A Per Pin max.
- . Contact Resistance: $\leq 20m\Omega$ /Contact.

3. MECHANICAL

- . *Average Insertion Force With Steel Pin of $\phi 0.43mm/0.017''$:
4-Finger $\leq 270g$,6-Finger $\leq 120g$
- . *Average Withdrawal Force With Steel Pin of $\phi 0.50mm/0.020''$:
4-Finger $\geq 25g$,6-Finger $\geq 15g$
- . *Mechanical Life: min 200 Cycles

4. PRODUCT NUMBER CODE:

DS1005-09 - X X X

CLIP PLATED

- 6: Full Tin
- 8: Full Gold flash
- C: Full Gold 3u"
- A: Full Gold 10u"
- B: Full Gold 15u"

PIN PLATED

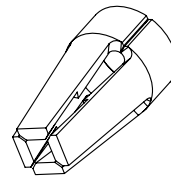
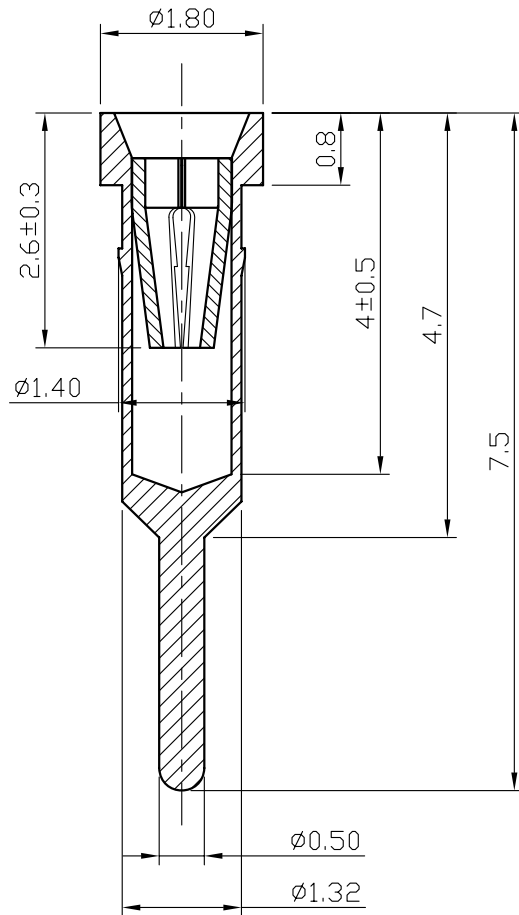
- 6: Full Tin
- 8: Full Gold flash
- C: Full Gold 3u"
- A: Full Gold 10u"
- B: Full Gold 15u"

CLIPS

- 3: 3Finger
- 4: 4Finger
- 6: 6Finger

SERIES NO

DS1005-09



clip figure(4 fingers)

GENERAL TOLERANCE		ANGLE TOLERANCE		PROJECTION		TITLE	SOCKET TERMINALS 7.43mm	
X.	± 0.20	X.	$\pm 2'$	UNITS	mm			
.X	± 0.10	.X	$\pm 1'$	SHEET SIZE	A4	SERIES	DS1005-09	
.XX	± 0.05	.XX	$\pm 0.5'$	晨翔电子有限公司 CONNFLY CONNFLY ELECTRONIC CO., LTD				
DRAWING TYPE		CUSTOMER						
SCALE		1:1	SHEET 1 OF 1					
DRAWING NO.		C-DS1005-09-XXX-B						

REV.	DESCRIPTION	DRAWN	CHECKED	APPROVED
A	NEW RELEASE	HP 07/12/05		

TECHNICAL DATA

1. MATERIAL

- . Pin(Outer Sleeve): Brass,Machined,CuZn38Pb2
- . Clip(Contact 4/6 Finger): Copper alloy,Heat Treated

2. ELECTRICAL

- . Current Rating: 1A Per Pin max.
- . Contact Resistance: $\leq 20m\Omega$ /Contact.

3. MECHANICAL

- . *Average Insertion Force With Steel Pin of $\phi 0.31mm/0.012''$:
6-Finger $\leq 120g$
- . *Average Withdrawal Force With Steel Pin of $\phi 0.31mm/0.012''$:
6-Finger $\geq 15g$
- . *Mechanical Life: min 200 Cycles

4. PRODUCT NUMBER CODE:

DS1005-10 - X X X

CLIP PLATED

- 6: Full Tin
- 8: Full Gold flash
- C: Full Gold 3u"
- A: Full Gold 10u"
- B: Full Gold 15u"

PIN PLATED

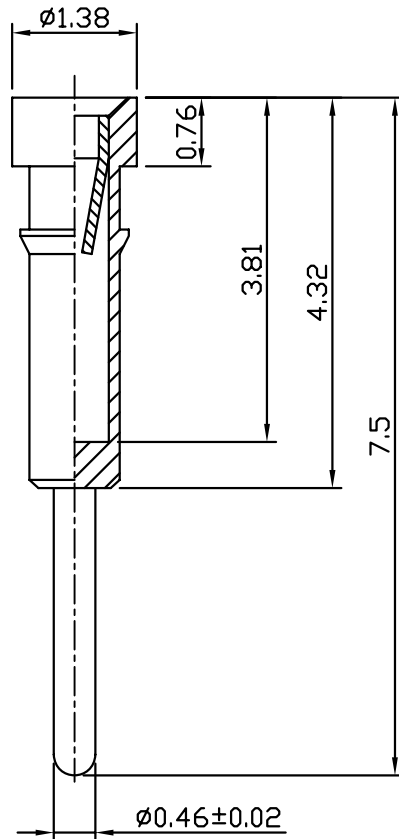
- 6: Full Tin
- 8: Full Gold flash
- C: Full Gold 3u"
- A: Full Gold 10u"
- B: Full Gold 15u"

CLIPS

- 3: 3Finger
- 4: 4Finger
- 6: 6Finger

SERIES NO

DS1005-10



GENERAL TOLERANCE		ANGLE TOLERANCE		PROJECTION		TITLE	SOCKET TERMINALS 7.5mm	
X.	± 0.20	X.	$\pm 2^\circ$	UNITS	mm			
.X	± 0.15	.X	$\pm 1^\circ$	SHEET SIZE	A4	SERIES	DS1005-10	
.XX	± 0.10	.XX	$\pm 0.5^\circ$					
DRAWING TYPE		CUSTOMER			晨翔电子有限公司 CONNFLY CONNFLY ELECTRONIC CO. LTD			
SCALE		1:1	SHEET	1 OF 1				
DRAWING NO.		C-DS1005-10-XXX						

REV.	DESCRIPTION	DRAWN	CHECKED	APPROVED
A	NEW RELEASE	HP 07/12/05		

TECHNICAL DATA

1. MATERIAL

- . Pin(Outer Sleeve): Brass,Machined,CuZn38Pb2
- . Clip(Contact 4/6 Finger): Copper alloy,Heat Treated

2. ELECTRICAL

- . Current Rating: 3A Per Pin max.
- . Contact Resistance: $\leq 20m\Omega$ /Contact.

3. MECHANICAL

- . *Average Insertion Force With Steel Pin of $\phi 0.43mm/0.017''$:
4-Finger $\leq 270g$,6-Finger $\leq 120g$
- . *Average Withdrawal Force With Steel Pin of $\phi 0.50mm/0.020''$:
4-Finger $\geq 25g$,6-Finger $\geq 15g$
- . *Mechanical Life: min 200 Cycles

4. PRODUCT NUMBER CODE:

DS1005-11 - X X X

CLIP PLATED

- 6: Full Tin
- 8: Full Gold flash
- C: Full Gold 3u"
- A: Full Gold 10u"
- B: Full Gold 15u"

PIN PLATED

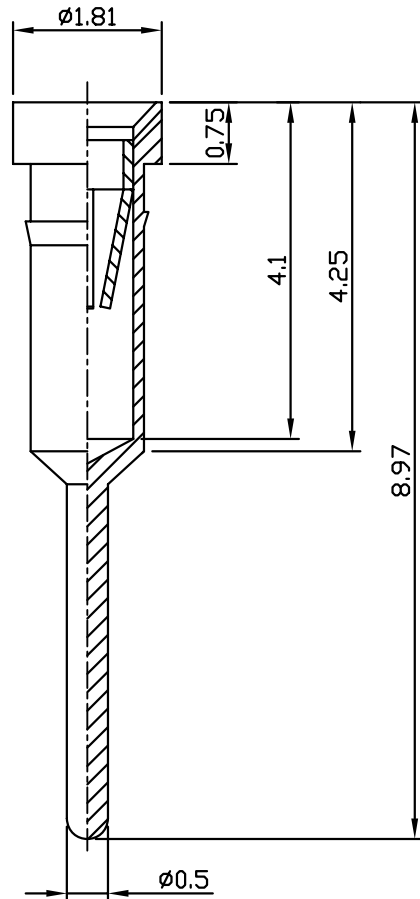
- 6: Full Tin
- 8: Full Gold flash
- C: Full Gold 3u"
- A: Full Gold 10u"
- B: Full Gold 15u"

CLIPS

- 3: 3Finger
- 4: 4Finger
- 6: 6Finger

SERIES NO

DS1005-11



GENERAL TOLERANCE	ANGLE TOLERANCE	PROJECTION		TITLE	SOCKET TERMINALS 8.97mm		
X. ± 0.20	X. $\pm 2^\circ$	UNITS	mm				
.X ± 0.10	.X $\pm 1^\circ$	SHEET SIZE	A4	SERIES	DS1005-11		
.XX ± 0.05	.XX $\pm 0.5^\circ$	晨翔电子有限公司 CONNFLY CONNFLY ELECTRONIC CO. LTD					
DRAWING TYPE	CUSTOMER						
SCALE	1:1						SHEET 1 OF 1
DRAWING NO.	C-DS1005-11-XXX						

REV.	DESCRIPTION	DRAWN	CHECKED	APPROVED
A	NEW RELEASE	HP 07/12/05		

TECHNICAL DATA

1. MATERIAL

- . Pin(Outer Sleeve): Brass,Machined,CuZn38Pb2
- . Clip(Contact 4/6 Finger): Copper alloy,Heat Treated

2. ELECTRICAL

- . Current Rating: 1A Per Pin max.
- . Contact Resistance: $\leq 20m\Omega$ /Contact.

3. MECHANICAL

- . *Average Insertion Force With Steel Pin of $\phi 0.31mm/0.012''$:
6-Finger $\leq 120g$
- . *Average Withdrawal Force With Steel Pin of $\phi 0.31mm/0.012''$:
6-Finger $\geq 15g$
- . *Mechanical Life: min 200 Cycles

4. PRODUCT NUMBER CODE:

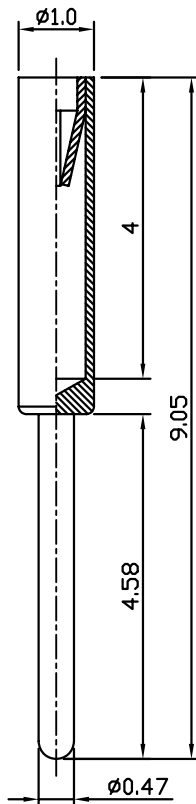
DS1005-12 - X X X

CLIP PLATED
6: Full Tin
8: Full Gold flash
C: Full Gold 3u"
A: Full Gold 10u"
B: Full Gold 15u"

PIN PLATED
6: Full Tin
8: Full Gold flash
C: Full Gold 3u"
A: Full Gold 10u"
B: Full Gold 15u"

CLIPS
3: 3Finger
4: 4Finger
6: 6Finger

SERIES NO
DS1005-12



GENERAL TOLERANCE		ANGLE TOLERANCE		PROJECTION		TITLE	SOCKET TERMINALS 9.05mm	
X.	± 0.20	X.	$\pm 2^\circ$	UNITS	mm			
.X	± 0.10	.X	$\pm 1^\circ$	SHEET SIZE	A4	SERIES	DS1005-12	
.XX	± 0.05	.XX	$\pm 0.5^\circ$					
DRAWING TYPE		CUSTOMER		晨翔电子有限公司 CONNFLY CONNFLY ELECTRONIC CO. LTD				
SCALE		SHEET						
DRAWING NO.		1 OF 1						
		C-DS1005-12-XXX						

REV.	DESCRIPTION	DRAWN	CHECKED	APPROVED
A	NEW RELEASE	HP 07/12/05		

TECHNICAL DATA

1. MATERIAL

- . Pin(Outer Sleeve): Brass,Machined,CuZn38Pb2
- . Clip(Contact 4/6 Finger): Copper alloy,Heat Treated

2. ELECTRICAL

- . Current Rating: 3A Per Pin max.
- . Contact Resistance: $\leq 20m\Omega$ /Contact.

3. MECHANICAL

- . *Average Insertion Force With Steel Pin of $\phi 0.43mm/0.017"$:
4-Finger $\leq 270g$,6-Finger $\leq 120g$
- . *Average Withdrawal Force With Steel Pin of $\phi 0.50mm/0.020"$:
4-Finger $\geq 25g$,6-Finger $\geq 15g$
- . *Mechanical Life: min 200 Cycles

4. PRODUCT NUMBER CODE:

DS1005-13 - X X X

CLIP PLATED

- 6: Full Tin
- 8: Full Gold flash
- C: Full Gold 3u"
- A: Full Gold 10u"
- B: Full Gold 15u"

PIN PLATED

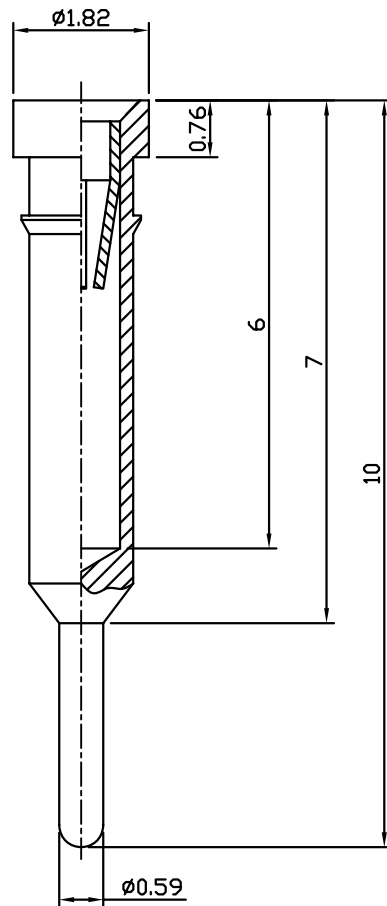
- 6: Full Tin
- 8: Full Gold flash
- C: Full Gold 3u"
- A: Full Gold 10u"
- B: Full Gold 15u"

CLIPS

- 3: 3Finger
- 4: 4Finger
- 6: 6Finger

SERIES NO

DS1005-13



GENERAL TOLERANCE		ANGLE TOLERANCE		PROJECTION		TITLE	SOCKET TERMINALS 10mm	
X.	± 0.20	X.	$\pm 2^\circ$	UNITS	mm			
.X	± 0.10	.X	$\pm 1^\circ$	SHEET SIZE	A4	SERIES	DS1005-13	
.XX	± 0.05	.XX	$\pm 0.5^\circ$					
DRAWING TYPE		CUSTOMER			晨翔电子有限公司 CONNFLY CONNFLY ELECTRONIC CO. LTD			
SCALE		1:1	SHEET	1 OF 1				
DRAWING NO.		C-DS1005-13-XXX						

REV.	DESCRIPTION	DRAWN	CHECKED	APPROVED
A	NEW RELEASE	HP 07/13/05		

TECHNICAL DATA

1. MATERIAL

- . Pin(Outer Sleeve): Brass,Machined,CuZn38Pb2
- . Clip(Contact 4/6 Finger): Copper alloy,Heat Treated

2. ELECTRICAL

- . Current Rating: 3A Per Pin max.
- . Contact Resistance: $\leq 20m\Omega$ /Contact.

3. MECHANICAL

- . *Average Insertion Force With Steel Pin of $\phi 0.43mm/0.017"$:
4-Finger $\leq 270g$,6-Finger $\leq 120g$
- . *Average Withdrawal Force With Steel Pin of $\phi 0.50mm/0.020"$:
4-Finger $\geq 25g$,6-Finger $\geq 15g$
- . *Mechanical Life: min 200 Cycles

4. PRODUCT NUMBER CODE:

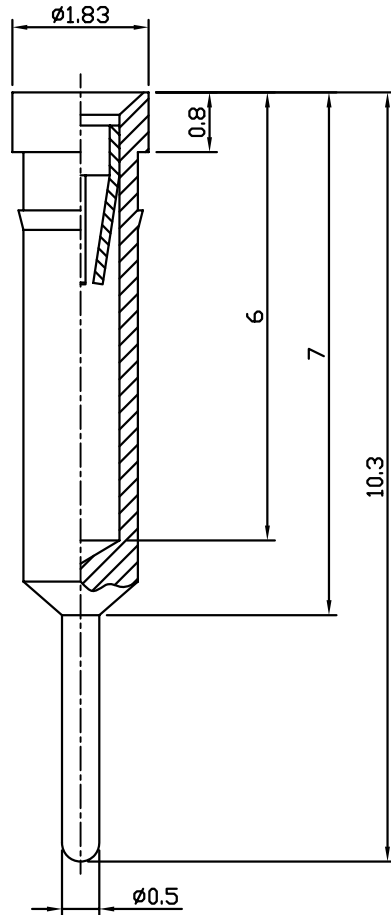
DS1005-14 - X X X

CLIP PLATED
 6: Full Tin
 8: Full Gold flash
 C: Full Gold 3u"
 A: Full Gold 10u"
 B: Full Gold 15u"

PIN PLATED
 6: Full Tin
 8: Full Gold flash
 C: Full Gold 3u"
 A: Full Gold 10u"
 B: Full Gold 15u"

CLIPS
 3: 3Finger
 4: 4Finger
 6: 6Finger

SERIES NO
 DS1005-14



GENERAL TOLERANCE		ANGLE TOLERANCE		PROJECTION	TITLE	SOCKET TERMINALS 10.3mm	
X.	± 0.20	X.	$\pm 2^\circ$				
.X	± 0.10	.X	$\pm 1^\circ$	mm			
.XX	± 0.05	.XX	$\pm 0.5^\circ$	A4	SERIES	DS1005-14	
DRAWING TYPE		CUSTOMER		晨翔电子有限公司 CONNFLY CONNFLY ELECTRONIC CO. LTD			
SCALE		SHEET					
DRAWING NO.		1 OF 1					
		C-DS1005-14-XXX					

REV.	DESCRIPTION	DRAWN	CHECKED	APPROVED
A	NEW RELEASE	HP 07/13/05		

TECHNICAL DATA

1. MATERIAL
 - . Pin(Outer Sleeve): Brass,Machined,CuZn38Pb2
 - . Clip(Contact 4/6 Finger): Copper alloy,Heat Treated
2. ELECTRICAL
 - . Current Rating: 1A Per Pin max.
 - . Contact Resistance: $\leq 20m\Omega$ /Contact.

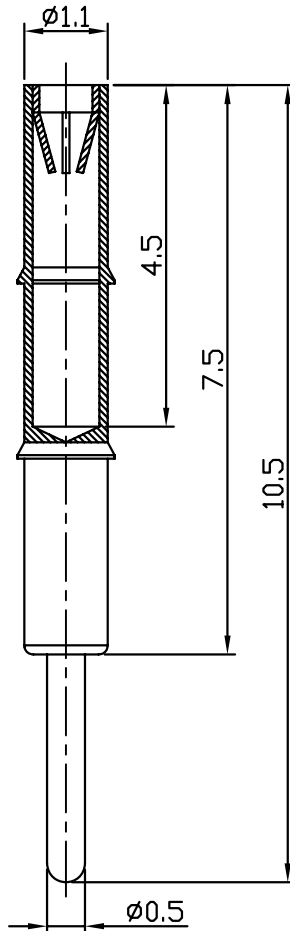
3. MECHANICAL

- . *Average Insertion Force With Steel Pin of $\phi 0.31mm/0.012''$:
6-Finger $\leq 120g$
- . *Average Withdrawal Force With Steel Pin of $\phi 0.31mm/0.012''$:
6-Finger $\geq 15g$
- . *Mechanical Life: min 200 Cycles

4. PRODUCT NUMBER CODE:

DS1005-15 - X X X

- CLIP PLATED
 - 6: Full Tin
 - 8: Full Gold flash
 - C: Full Gold 3u"
 - A: Full Gold 10u"
 - B: Full Gold 15u"
- PIN PLATED
 - 6: Full Tin
 - 8: Full Gold flash
 - C: Full Gold 3u"
 - A: Full Gold 10u"
 - B: Full Gold 15u"
- CLIPS
 - 3: 3Finger
 - 4: 4Finger
 - 6: 6Finger
- SERIES NO
DS1005-15



GENERAL TOLERANCE		ANGLE TOLERANCE		PROJECTION		TITLE	SOCKET TERMINALS 10.5mm	
X.	± 0.20	X.	$\pm 2^\circ$	UNITS	mm			
.X	± 0.10	.X	$\pm 1^\circ$	SHEET SIZE	A4	SERIES	DS1005-15	
.XX	± 0.05	.XX	$\pm 0.5^\circ$					
DRAWING TYPE		CUSTOMER		晨翔电子有限公司 CONNFLY CONNFLY ELECTRONIC CO. LTD				
SCALE		SHEET						
DRAWING NO.		1 OF 1						
		C-DS1005-15-XXX						

REV.	DESCRIPTION	DRAWN	CHECKED	APPROVED
A	NEW RELEASE	HP 07/13/05		

TECHNICAL DATA

1. MATERIAL

- . Pin(Outer Sleeve): Brass,Machined,CuZn38Pb2
- . Clip(Contact 4/6 Finger): Copper alloy,Heat Treated

2. ELECTRICAL

- . Current Rating: 3A Per Pin max.
- . Contact Resistance: $\leq 20m\Omega$ /Contact.

3. MECHANICAL

- . *Average Insertion Force With Steel Pin of $\phi 0.43mm/0.017"$:
4-Finger $\leq 270g$,6-Finger $\leq 120g$
- . *Average Withdrawal Force With Steel Pin of $\phi 0.50mm/0.020"$:
4-Finger $\geq 25g$,6-Finger $\geq 15g$
- . *Mechanical Life: min 200 Cycles

4. PRODUCT NUMBER CODE:

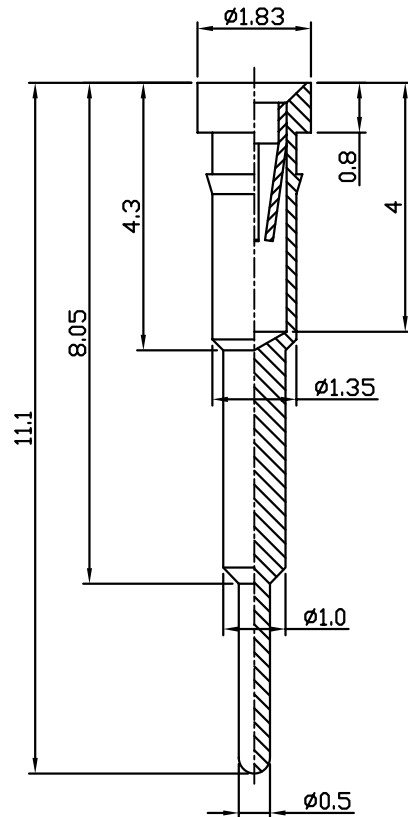
DS1005-16 - X X X

CLIP PLATED
 6: Full Tin
 8: Full Gold flash
 C: Full Gold 3u"
 A: Full Gold 10u"
 B: Full Gold 15u"

PIN PLATED
 6: Full Tin
 8: Full Gold flash
 C: Full Gold 3u"
 A: Full Gold 10u"
 B: Full Gold 15u"

CLIPS
 3: 3Finger
 4: 4Finger
 6: 6Finger

SERIES NO
 DS1005-16



GENERAL TOLERANCE		ANGLE TOLERANCE		PROJECTION		TITLE	SOCKET TERMINALS 11.1mm	
X.	± 0.20	X.	$\pm 2^\circ$	UNITS	mm			
.X	± 0.10	.X	$\pm 1^\circ$	SHEET SIZE	A4	SERIES	DS1005-16	
.XX	± 0.05	.XX	$\pm 0.5^\circ$					
DRAWING TYPE		CUSTOMER		晨翔电子有限公司 CONNFLY CONNFLY ELECTRONIC CO. LTD				
SCALE		SHEET						
DRAWING NO.		1 OF 1						
		C-DS1005-16-XXX						

REV.	DESCRIPTION	DRAWN	CHECKED	APPROVED
A	NEW RELEASE	HP 07/13/05		

TECHNICAL DATA

1. MATERIAL

- . Pin(Outer Sleeve): Brass,Machined,CuZn38Pb2
- . Clip(Contact 4/6 Finger): Copper alloy,Heat Treated

2. ELECTRICAL

- . Current Rating: 3A Per Pin max.
- . Contact Resistance: $\leq 20m\Omega$ /Contact.

3. MECHANICAL

- . *Average Insertion Force With Steel Pin of $\phi 0.43mm/0.017"$:
4-Finger $\leq 270g$,6-Finger $\leq 120g$
- . *Average Withdrawal Force With Steel Pin of $\phi 0.50mm/0.020"$:
4-Finger ≥ 25 ,6-Finger $\geq 15g$
- . *Mechanical Life: min 200 Cycles

4. PRODUCT NUMBER CODE:

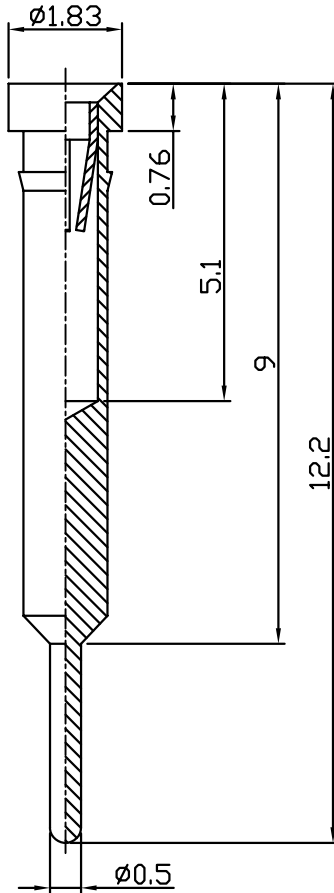
DS1005-17 - X X X

CLIP PLATED
 6: Full Tin
 8: Full Gold flash
 C: Full Gold 3u"
 A: Full Gold 10u"
 B: Full Gold 15u"

PIN PLATED
 6: Full Tin
 8: Full Gold flash
 C: Full Gold 3u"
 A: Full Gold 10u"
 B: Full Gold 15u"

CLIPS
 3: 3Finger
 4: 4Finger
 6: 6Finger

SERIES NO
 DS1005-17



GENERAL TOLERANCE		ANGLE TOLERANCE		PROJECTION		TITLE	SOCKET TERMINALS 12.2mm		
X. ± 0.20	.X ± 0.10	.XX ± 0.05	X. $\pm 2^\circ$.X $\pm 1^\circ$.XX $\pm 0.5^\circ$	UNITS	mm	SHEET SIZE	
						A4	SERIES	DS1005-17	
DRAWING TYPE		CUSTOMER		晨翔电子有限公司 CONNFLY CONNFLY ELECTRONIC CO. LTD					
SCALE		1:1	SHEET						1 OF 1
DRAWING NO.		C-DS1005-17-XXX							

REV.	DESCRIPTION	DRAWN	CHECKED	APPROVED
A	NEW RELEASE	HP 07/13/05		

TECHNICAL DATA

1. MATERIAL&FINISHES

- . Pin(Outer Sleeve): Brass,Machined,CuZn38Pb2
- . Clip(Contact 4/6 Finger): Copper alloy,Heat Treated

2. ELECTRICAL

- . Current Rating: 3A Per Pin max.
- . Contact Resistance: $\leq 20m\Omega$ /Contact.

3. MECHANICAL

- . *Average Insertion Force With Steel Pin of $\phi 0.43mm/0.017"$:
4-Finger $\leq 270g$,6-Finger $\leq 120g$
- . *Average Withdrawal Force With Steel Pin of $\phi 0.50mm/0.020"$:
4-Finger $\geq 25g$,6-Finger $\geq 15g$
- . *Mechanical Life: min 200 Cycles

4. PRODUCT NUMBER CODE:

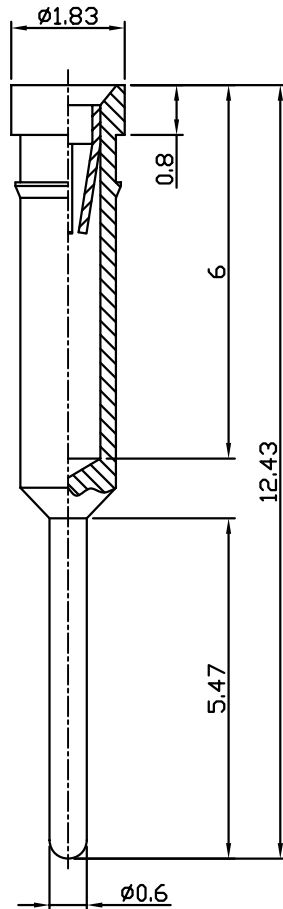
DS1005-18 - X X X

CLIP PLATED
6: Full Tin
8: Full Gold flash
C: Full Gold 3u"
A: Full Gold 10u"
B: Full Gold 15u"

PIN PLATED
6: Full Tin
8: Full Gold flash
C: Full Gold 3u"
A: Full Gold 10u"
B: Full Gold 15u"

CLIPS
3: 3Finger
4: 4Finger
6: 6Finger

SERIES NO
DS1005-18



GENERAL TOLERANCE	ANGLE TOLERANCE	PROJECTION		TITLE	SOCKET TERMINALS 12.43mm
X. ± 0.20	X. $\pm 2^\circ$	UNITS	mm		
.X ± 0.10	.X $\pm 1^\circ$	SHEET SIZE	A4	SERIES	DS1005-18
.XX ± 0.05	.XX $\pm 0.5^\circ$	晨翔电子有限公司 CONNFLY CONNFLY ELECTRONIC CO. LTD			
DRAWING TYPE	CUSTOMER				
SCALE	1:1 SHEET 1 OF 1				
DRAWING NO.	C-DS1005-18-XXX				

REV.	DESCRIPTION	DRAWN	CHECKED	APPROVED
A	NEW RELEASE	HP 07/13/05		

TECHNICAL DATA

1. MATERIAL&FINISHES

- . Pin(Outer Sleeve): Brass,Machined,CuZn38Pb2
- . Clip(Contact 4/6 Finger): Copper alloy,Heat Treated

2. ELECTRICAL

- . Current Rating: 3A Per Pin max.
- . Contact Resistance: $\leq 20m\Omega$ /Contact.

3. MECHANICAL

- . *Average Insertion Force With Steel Pin of $\phi 0.43mm/0.017"$:
4-Finger $\leq 270g$,6-Finger $\leq 120g$
- . *Average Withdrawal Force With Steel Pin of $\phi 0.50mm/0.020"$:
4-Finger $\geq 25g$,6-Finger $\geq 15g$
- . *Mechanical Life: min 200 Cycles

4. PRODUCT NUMBER CODE:

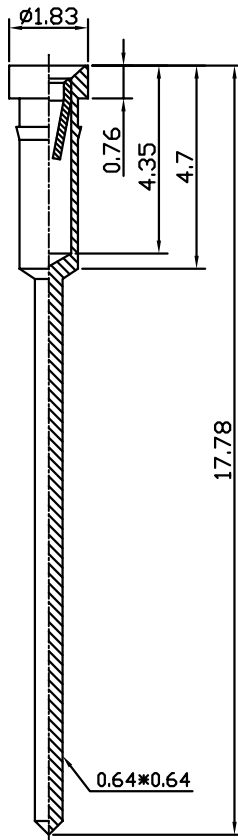
DS1005-19 - X X X

CLIP PLATED
 6: Full Tin
 8: Full Gold flash
 C: Full Gold 3u"
 A: Full Gold 10u"
 B: Full Gold 15u"

PIN PLATED
 6: Full Tin
 8: Full Gold flash
 C: Full Gold 3u"
 A: Full Gold 10u"
 B: Full Gold 15u"

CLIPS
 3: 3Finger
 4: 4Finger
 6: 6Finger

SERIES NO
 DS1005-19



GENERAL TOLERANCE		ANGLE TOLERANCE		PROJECTION		TITLE	SOCKET TERMINALS 17.78mm		
X.	± 0.20	X.	$\pm 2^\circ$	UNITS	mm				
.X	± 0.10	.X	$\pm 1^\circ$	SHEET SIZE	A4	SERIES	DS1005-19		
.XX	± 0.05	.XX	$\pm 0.5^\circ$						
DRAWING TYPE		CUSTOMER		晨翔电子有限公司 CONNFLY CONNFLY ELECTRONIC CO. LTD					
SCALE		1:1	SHEET						1 OF 1
DRAWING NO.		C-DS1005-19-XXX							

REV.	DESCRIPTION	DRAWN	CHECKED	APPROVED
A	NEW RELEASE	HP 07/13/05		

TECHNICAL DATA

1. MATERIAL

- . Pin(Outer Sleeve): Brass,Machined,CuZn38Pb2
- . Clip(Contact 4/6 Finger): Copper alloy,Heat Treated

2. ELECTRICAL

- . Current Rating: 3A Per Pin max.
- . Contact Resistance: $\leq 20m\Omega$ /Contact.

3. MECHANICAL

- . *Average Insertion Force With Steel Pin of $\phi 0.43mm/0.017"$:
4-Finger $\leq 270g$,6-Finger $\leq 120g$
- . *Average Withdrawal Force With Steel Pin of $\phi 0.50mm/0.020"$:
4-Finger $\geq 25g$,6-Finger $\geq 15g$
- . *Mechanical Life: min 200 Cycles

4. PRODUCT NUMBER CODE:

DS1005-20 - X X X

CLIP PLATED

- 6: Full Tin
- 8: Full Gold flash
- C: Full Gold 3u"
- A: Full Gold 10u"
- B: Full Gold 15u"

PIN PLATED

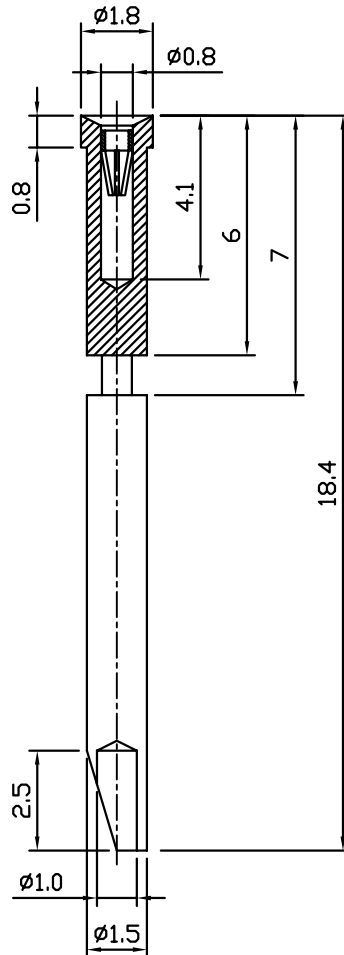
- 6: Full Tin
- 8: Full Gold flash
- C: Full Gold 3u"
- A: Full Gold 10u"
- B: Full Gold 15u"

CLIPS

- 3: 3Finger
- 4: 4Finger
- 6: 6Finger

SERIES NO

DS1005-20



GENERAL TOLERANCE		ANGLE TOLERANCE		PROJECTION		TITLE	SOCKET TERMINALS 18.4mm	
X.	± 0.20	X.	$\pm 2^\circ$	UNITS	mm			
.X	± 0.10	.X	$\pm 1^\circ$	SHEET SIZE	A4	SERIES	DS1005-20	
.XX	± 0.05	.XX	$\pm 0.5^\circ$	晨翔电子有限公司 CONNFLY CONNFLY ELECTRONIC CO. LTD				
DRAWING TYPE		CUSTOMER						
SCALE	1:1	SHEET	1 OF 1					
DRAWING NO.		C-DS1005-20-XXX						