

REV.	DESCRIPTION	DRAWN	CHECKED	APPROVED
A	NEW RELEASE	YCH 03/17/08'	~	

N:NUMBER OF CONTACTS

NOTES:

- ELECTRICAL CHARACTERISTICS:
  - CONTACT RESISTANCE: 20mΩ Max.
  - DIELECTRIC WITHSTANDING VOLTAGE: 500V AC(rms) FOR 1 MINUTE.
  - INSULATION RESISTANCE: 1000MΩ Min.
- ENVIRONMENT CHARACTERISTICS:
  - TEMPERATURE RANGE: -40°C~+105°C.
- PRODUCT NUMBER CODE:

DS1021-02- X X X X

TABLE A & DIM. TYPE  
1: TYPE 1

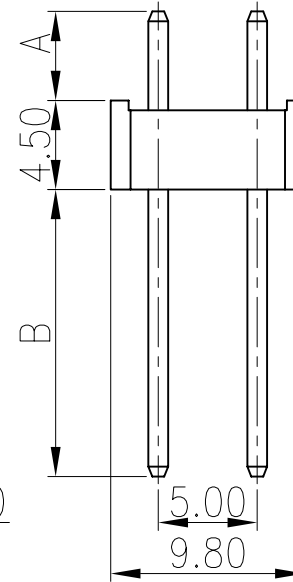
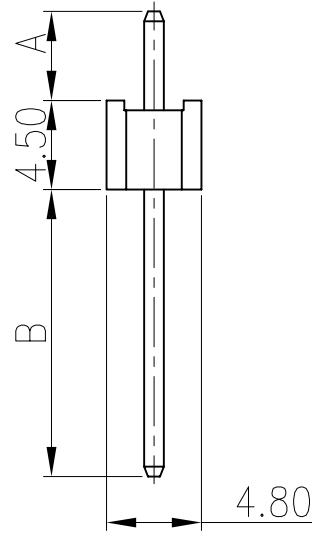
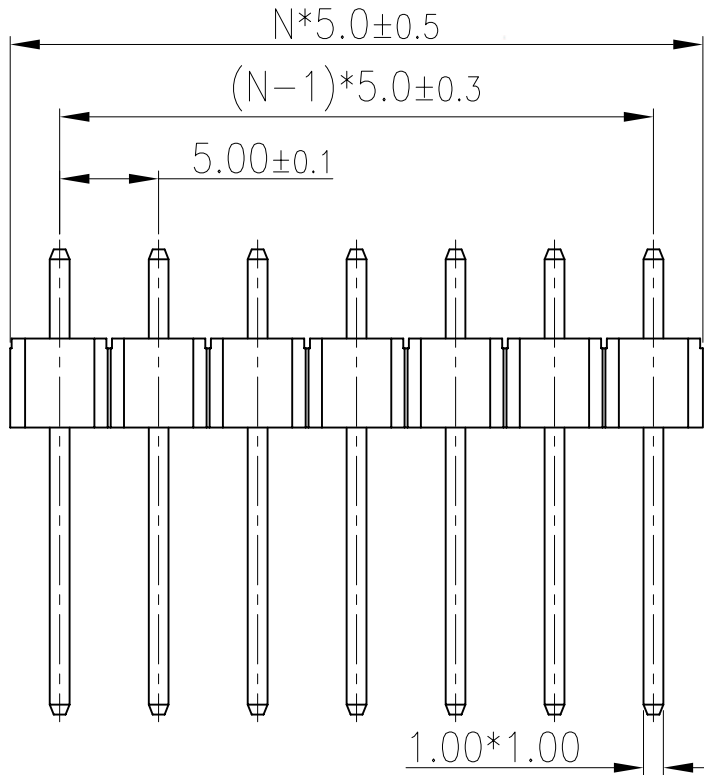
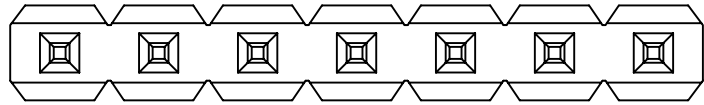
CONTACT PLATING  
F1: FULL GOLD FLASH  
6: TIN

MOUNTING TYPE  
V: V/T TYPE  
No. OF CONTACTS

1\*1~1\*40  
2\*2~2\*40

TABLE A:

TYPE	Dimension	
	A	B
1	4.50	14.50
2		
3		
4		
5		
6		



GENERAL TOLERANCE		ANGLE TOLERANCE	
X.	±0.60	X.	±5°
.X	±0.38	.X	±3°
.XX	±0.25	.XX	±2°

PROJECTION	TITLE	PIN HEADER PITCH 5.00mm V/T TYPE	
UNITS	mm		
SHEET SIZE	A4	SERIES	DS1021-02 SERIES

DRAWING TYPE	CUSTOMER		
SCALE	1:1	SHEET	1 OF 1
DRAWING NO.	C-DS1021-02-XXXX		



晨翔电子有限公司

CONNFLY CONNFLY ELECTRONIC CO. LTD